

Sta. 13+00.00, Water Line 20 =
B.L. Sta. 14+10.46, 18.0' Lt.
(Match Point)

COUNTRY ACRES
SECOND ADDITION
Block 35

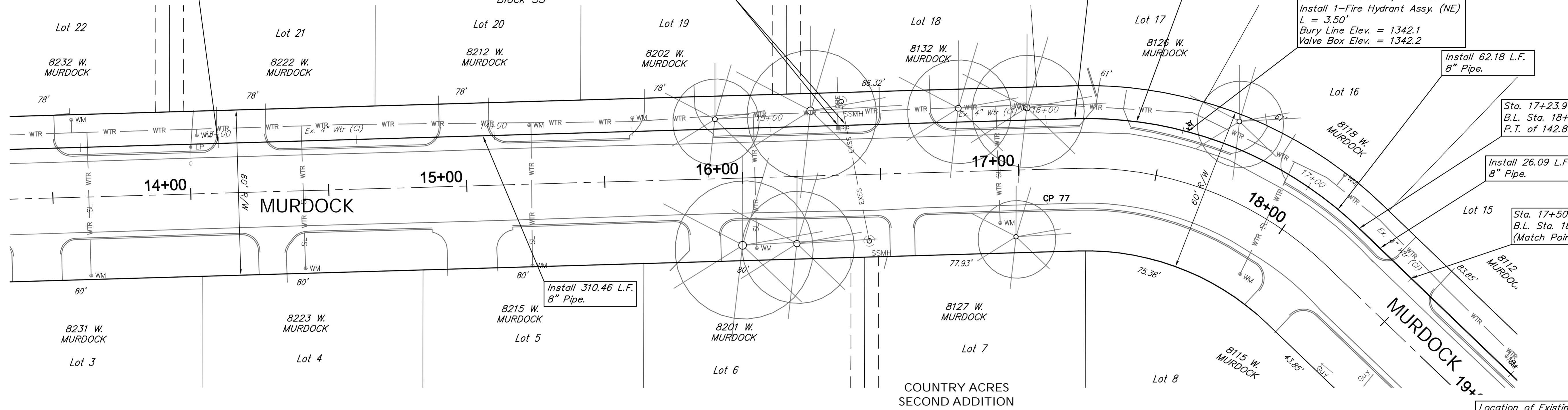
CAUTION!
Existing
San. Sewer
& OHE
Crossing

Sta. 16+10.46, Water Line 20 =
B.L. Sta. 17+20.92, 18.0' Lt.
P.C. of 142.8' Radius Curve.

Install 51.27 L.F.
8" Pipe.

Sta. 16+61.73, Water Line 20 =
B.L. Sta. 17+56.98, 18.0' Lt.
Install 1-Fire Hydrant Assy. (NE)
L = 3.50'
Bury Line Elev. = 1342.1
Valve Box Elev. = 1342.2

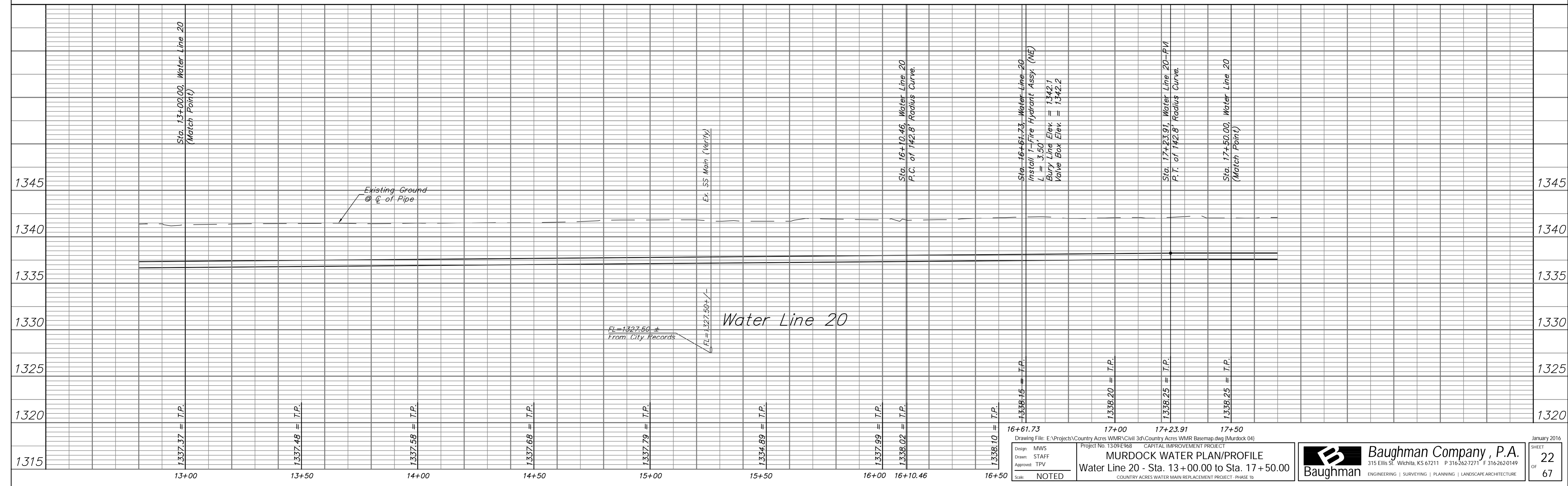
SCALE:
HORIZONTAL: 1" = 20'
VERTICAL: 1" = 5'



Water Line 20 B.L. Sta. =
Centerline of Murdock.

Water Line 20

Location of Existing Line is Based on Record
Information from the City. The Contractor Shall
Excavate the Ex. Water and to Verify Size and
Location PRIOR to Beginning Construction. This
Work Shall be Considered SUBSIDIARY to the
Water Line Installation.



Drawing File: E:\Projects\Country Acres\WMR\Civil 3d\Country Acres\WMR Basemap.dwg (Murdock 04)
Project No. 1309E968 CAPITAL IMPROVEMENT PROJECT
Design: MWS
Drawn: STAFF
Approved: TPV
Scale: NOTED
MURDOCK WATER PLAN/PROFILE
Water Line 20 - Sta. 13+00.00 to Sta. 17+50.00
COUNTRY ACRES WATER MAIN REPLACEMENT PROJECT - PHASE 1b

Baughman Company, P.A.
315 Ellis St., Wichita, KS 67211 P 316.262.7271 F 316.262.0149
ENGINEERING | SURVEYING | PLANNING | LANDSCAPE ARCHITECTURE

January 2016
SHEET 22 OF 67