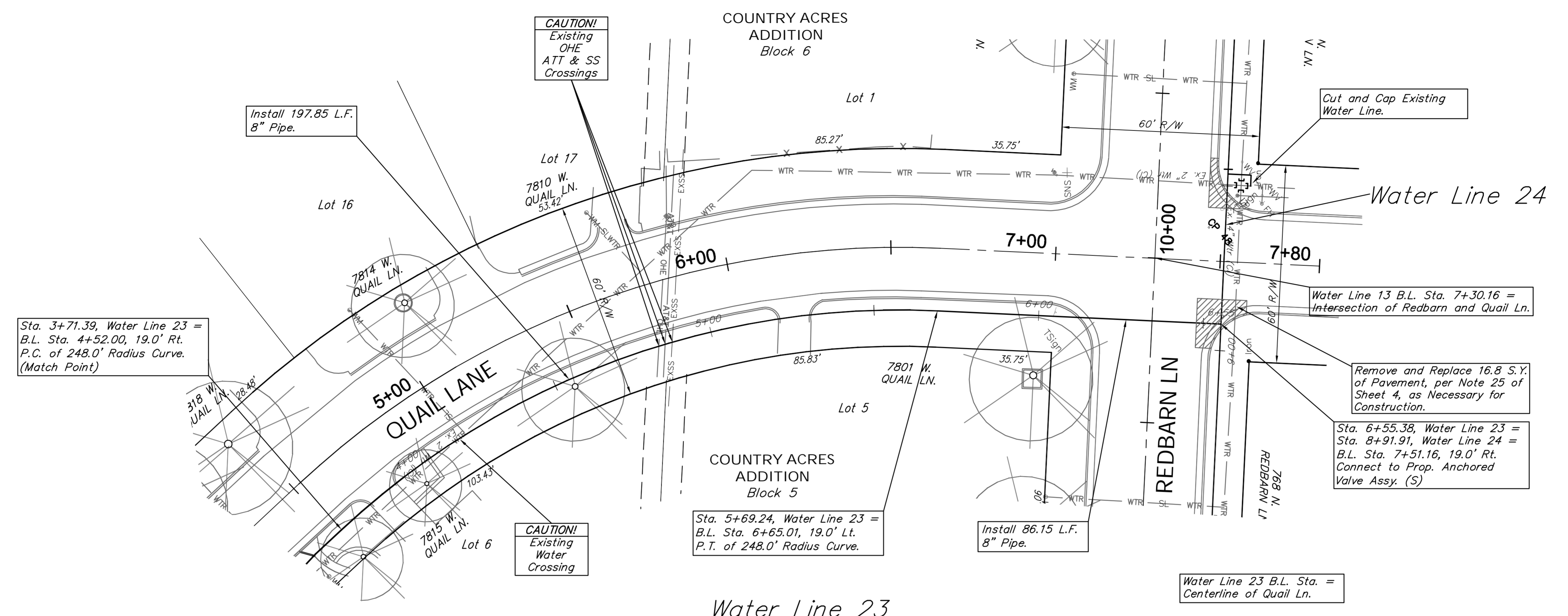
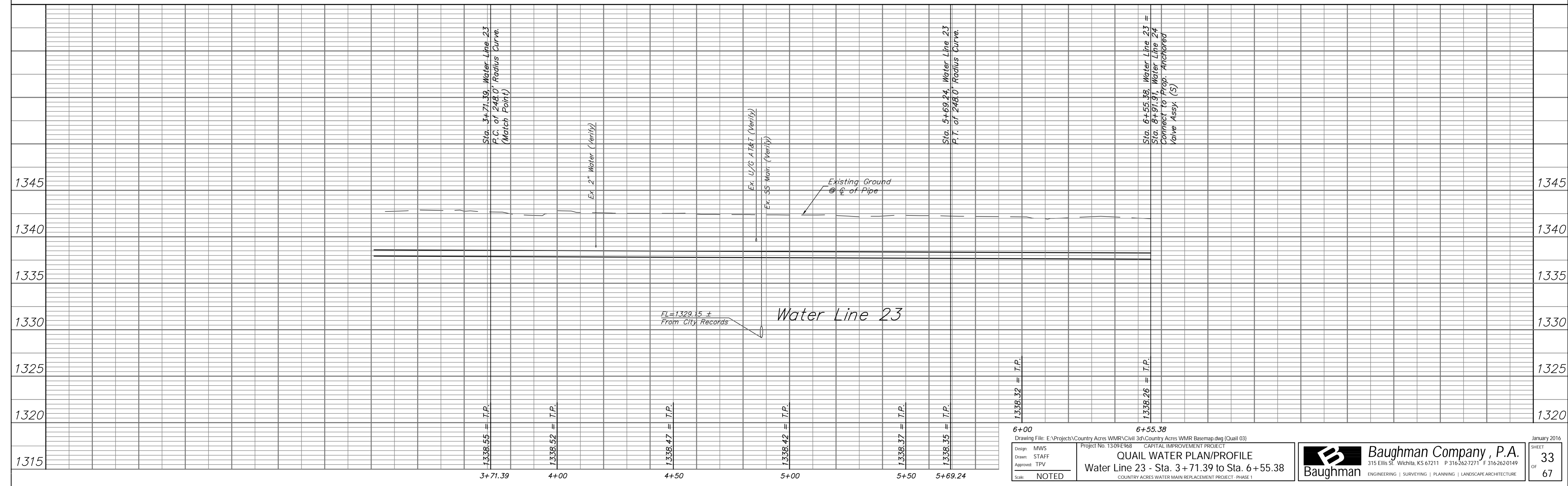


SCALE:  
 HORIZONTAL: 1" = 20'  
 VERTICAL: 1" = 5'



Location of Existing Line is Based on Record Information from the City. The Contractor Shall Excavate the Ex. Water and to Verify Size and Location PRIOR to Beginning Construction. This Work Shall be Considered SUBSIDIARY to the Water Line Installation.



6+00 6+55.38  
 Drawing File: E:\Projects\Country Acres WMR\Civil 3d\Country Acres WMR Basemap.dwg (Quail 03)  
 Project No. 1309E968 CAPITAL IMPROVEMENT PROJECT  
 Design: MWS  
 Drawn: STAFF  
 Approved: TPV  
 Scale: NOTED  
 QUAIL WATER PLAN/PROFILE  
 Water Line 23 - Sta. 3+71.39 to Sta. 6+55.38  
 COUNTRY ACRES WATER MAIN REPLACEMENT PROJECT - PHASE 1