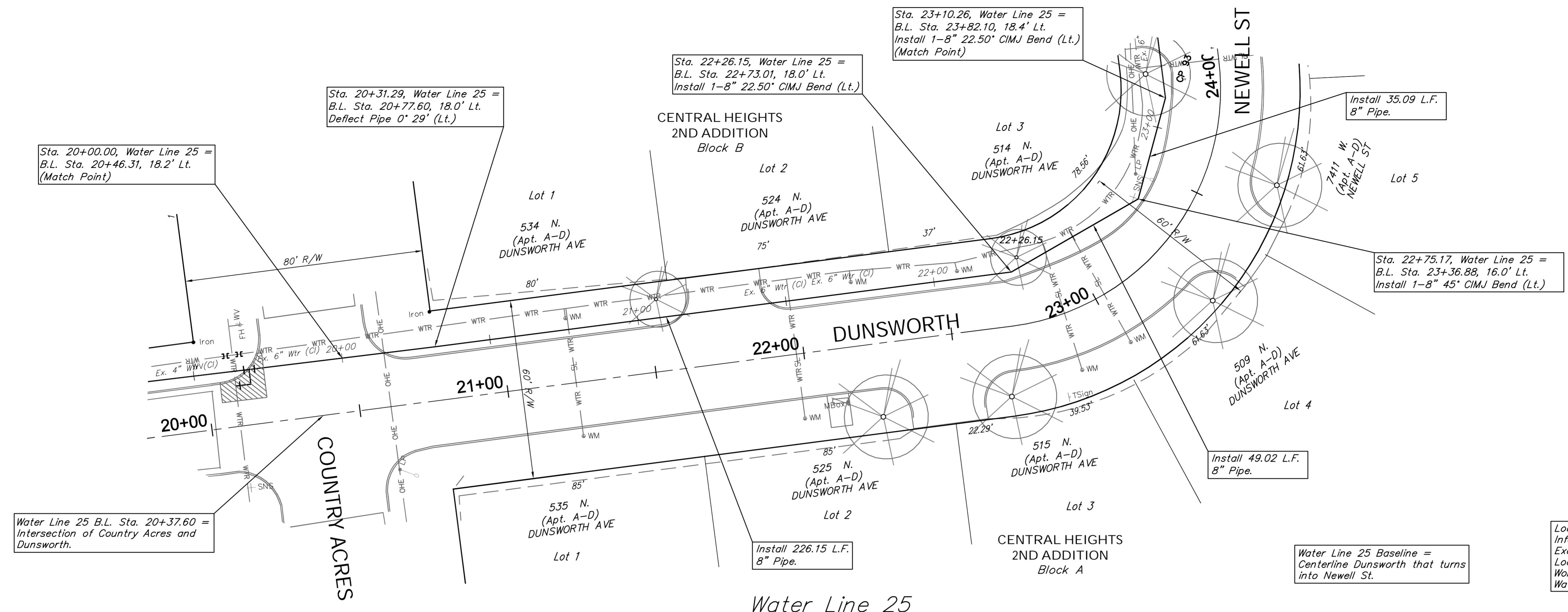


SCALE:
HORIZONTAL: 1" = 20'
VERTICAL: 1" = 5'



Sta. 20+00.00, Water Line 25 =
B.L. Sta. 20+46.31, 18.2' Lt.
(Match Point)

Sta. 20+31.29, Water Line 25 =
B.L. Sta. 20+77.60, 18.0' Lt.
Deflect Pipe 0' 29' (Lt.)

Sta. 22+26.15, Water Line 25 =
B.L. Sta. 22+73.01, 18.0' Lt.
Install 1-8" 22.50' CIMJ Bend (Lt.)

Sta. 23+10.26, Water Line 25 =
B.L. Sta. 23+82.10, 18.4' Lt.
Install 1-8" 22.50' CIMJ Bend (Lt.)
(Match Point)

Install 35.09 L.F.
8" Pipe.

Sta. 22+75.17, Water Line 25 =
B.L. Sta. 23+36.88, 16.0' Lt.
Install 1-8" 45' CIMJ Bend (Lt.)

Water Line 25 B.L. Sta. 20+37.60 =
Intersection of Country Acres and
Dunsworth.

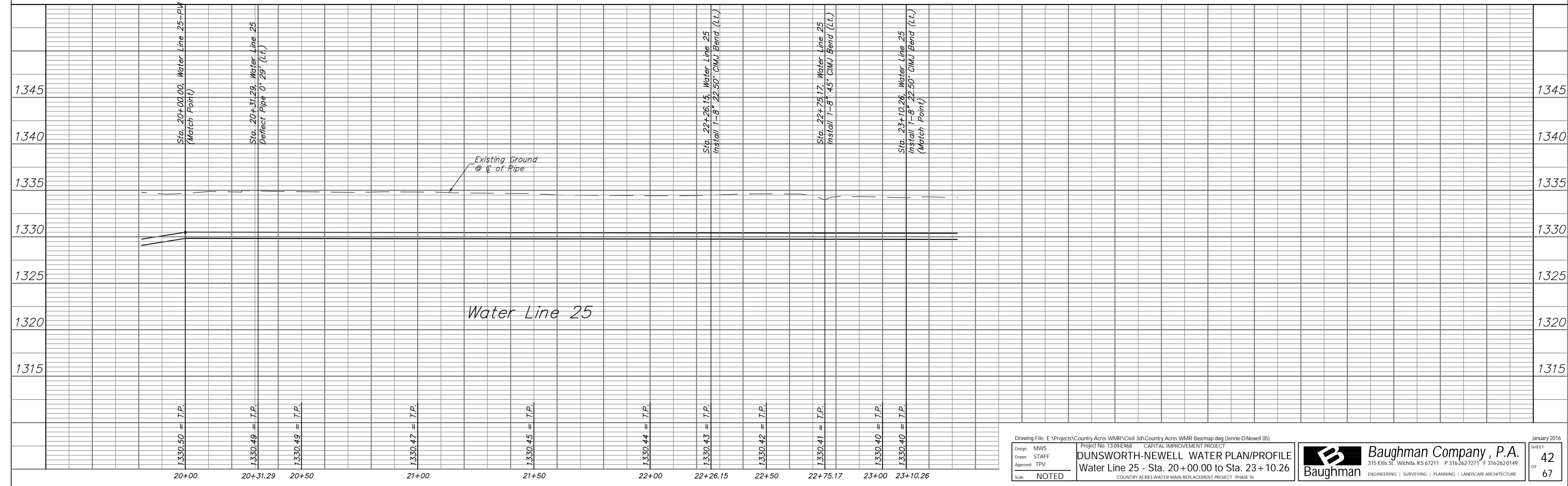
Install 49.02 L.F.
8" Pipe.

Water Line 25 Baseline =
Centerline Dunsworth that turns
into Newell St.

Location of Existing Line is Based on Record
Information from the City. The Contractor Shall
Excavate the Ex. Water and to Verify Size and
Location PRIOR to Beginning Construction. This
Work Shall be Considered SUBSIDIARY to the
Water Line Installation.



Water Line 25



Drawing File: E:\Projects\Country Acres WMR\Civil 3d\Country Acres WMR Basemap.dwg (Jennie D Newell 05)
Project No. 1309E968 CAPITAL IMPROVEMENT PROJECT
Design: MWS
Drawn: STAFF
Approved: TPV
Scale: NOTED
DUNSWORTH-NEWELL WATER PLAN/PROFILE
Water Line 25 - Sta. 20+00.00 to Sta. 23+10.26
COUNTRY ACRES WATER MAIN REPLACEMENT PROJECT - PHASE 1B

Baughman Company, P.A.
315 Ellis St., Wichita, KS 67211 P 316-262-7271 F 316-262-0149
ENGINEERING | SURVEYING | PLANNING | LANDSCAPE ARCHITECTURE

January 2016
SHEET 42 OF 67