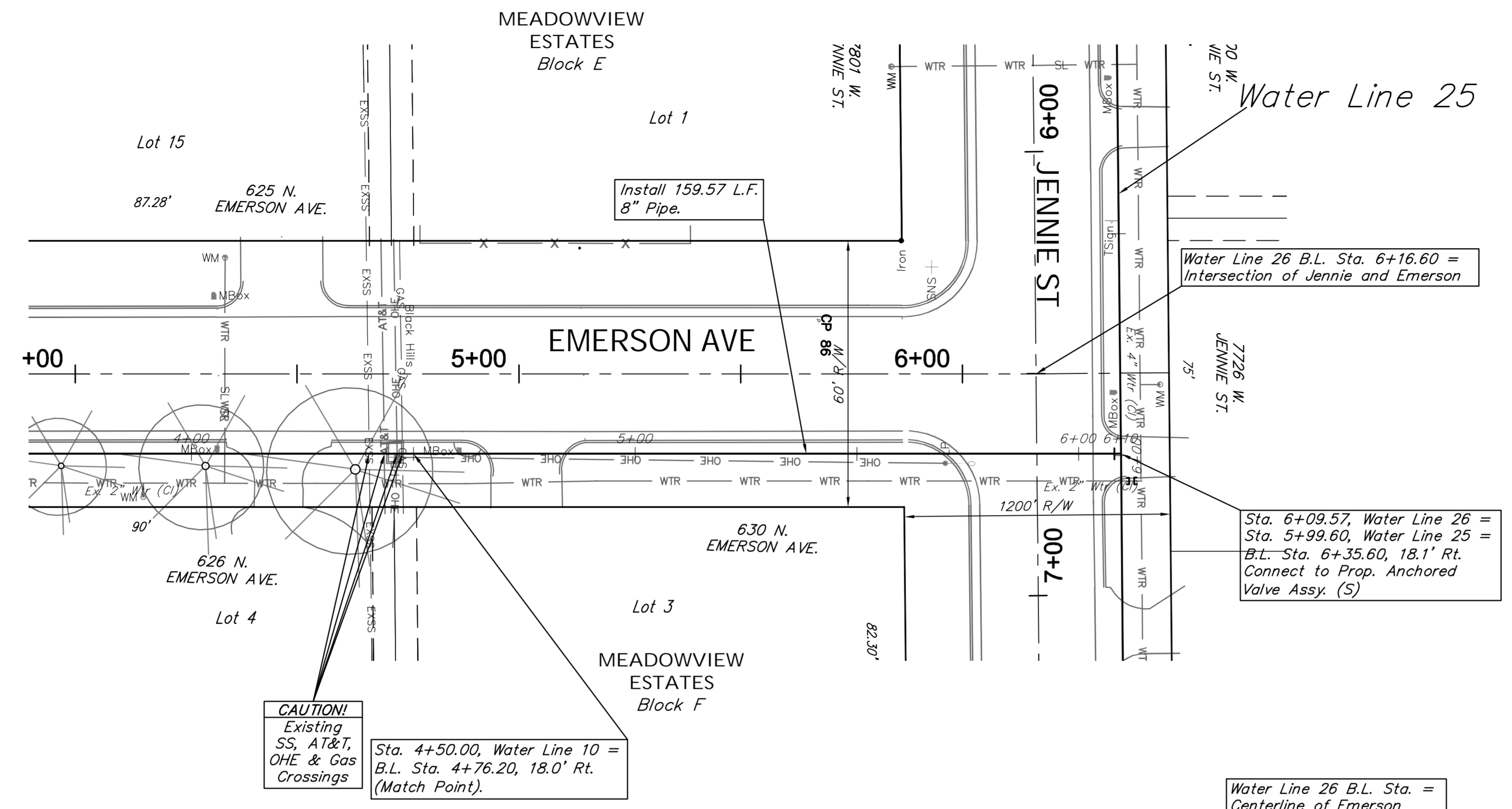


SCALE:
 HORIZONTAL: 1" = 20'
 VERTICAL: 1" = 5'



CAUTION!
 Existing SS, AT&T, OHE & Gas Crossings

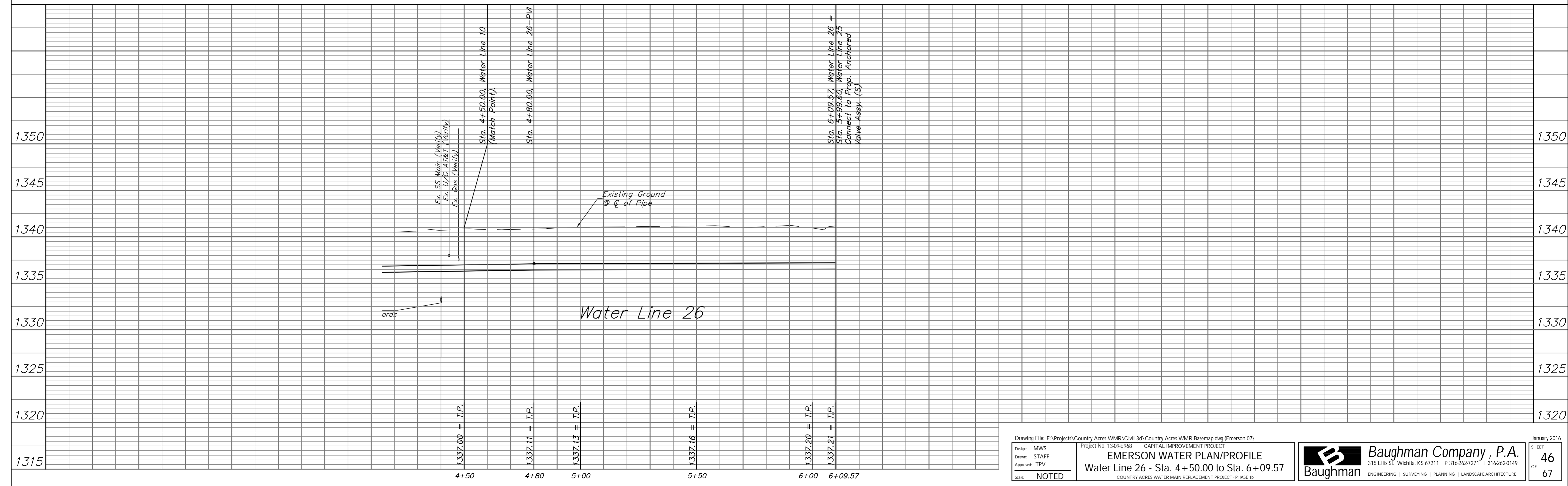
Water Line 26 B.L. Sta. = Centerline of Emerson

Sta. 6+09.57, Water Line 26 = Sta. 5+99.60, Water Line 25 = B.L. Sta. 6+35.60, 18.1' Rt. Connect to Prop. Anchored Valve Assy. (S)

Location of Existing Line is Based on Record Information from the City. The Contractor Shall Excavate the Ex. Water and to Verify Size and Location PRIOR to Beginning Construction. This Work Shall be Considered SUBSIDIARY to the Water Line Installation.



Water Line 26



Drawing File: E:\Projects\Country Acres WMR\Civil 3d\Country Acres WMR Basemap.dwg (Emerson 07)
 Design: MWS
 Drawn: STAFF
 Approved: TPV
 Scale: NOTED

EMERSON WATER PLAN/PROFILE
 Water Line 26 - Sta. 4 + 50.00 to Sta. 6 + 09.57
 COUNTRY ACRES WATER MAIN REPLACEMENT PROJECT - PHASE 1b

Baughman Company, P.A.
 315 Ellis St., Wichita, KS 67211 P 316-262-7271 F 316-262-0149
 ENGINEERING | SURVEYING | PLANNING | LANDSCAPE ARCHITECTURE

January 2016
 SHEET 46 OF 67