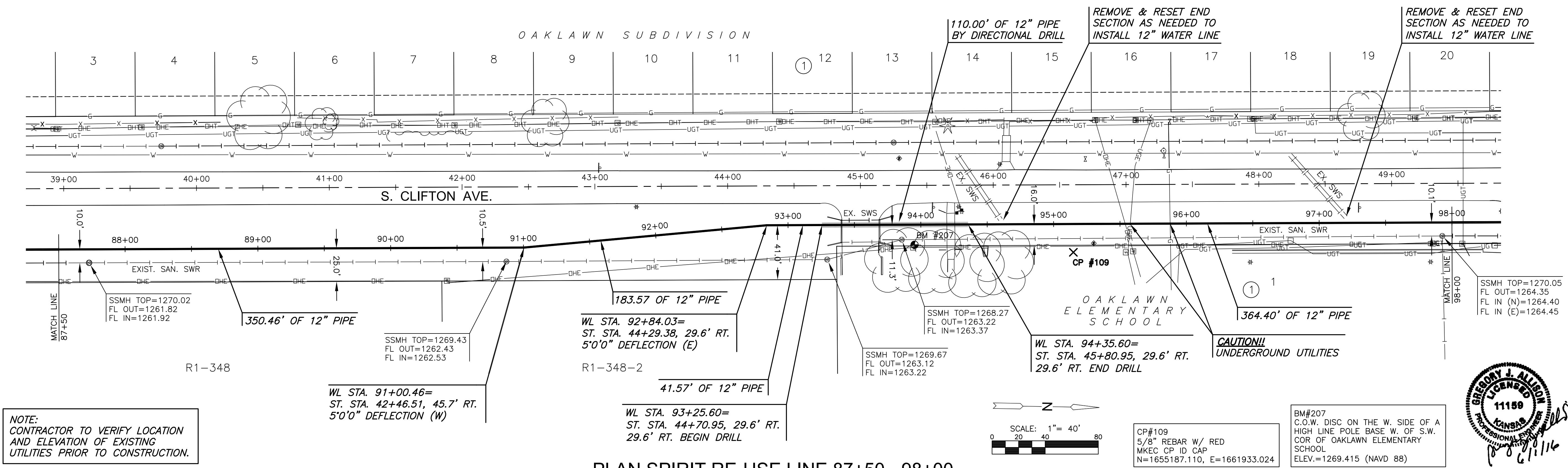


PLOTTED: Thursday, June 02, 2016 @ 11:20AM

CITY OF WICHITA, KS  
**12" RE-USE WATER PIPELINE**  
TO SERVE SPIRIT AEROSYSTEMS

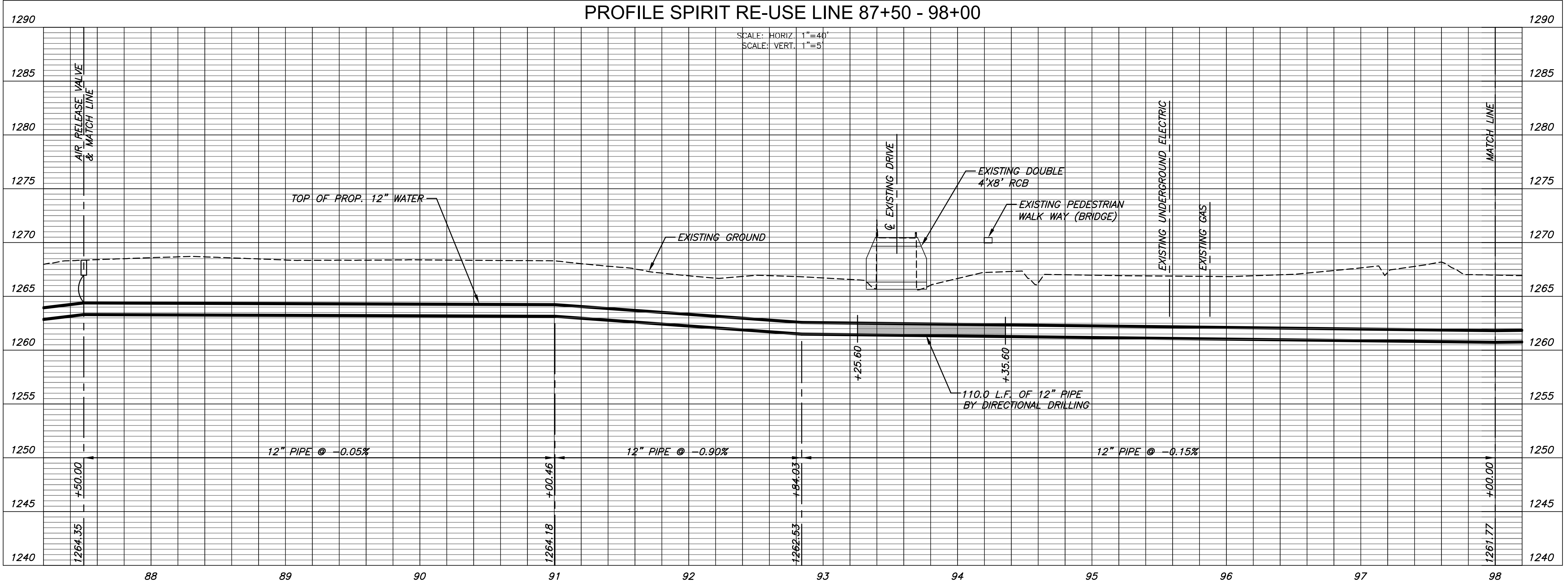
©2016 MKEC Engineering All Rights Reserved  
www.mkec.com  
These drawings and their contents, including, but not limited to, all concepts, designs, & ideas are the exclusive property of MKEC Engineering (MKEC), and may not be used or reproduced in any way without the express consent of MKEC.

SPIRIT RE-USE LINE 87+50-98+00		
PROJECT NO.	468-85095	
DATE	APRIL 2016	
SCALE	1" = 40'	
DESIGNED	DRAWN	CHECKED
DFL	JWC	MAB
NO.	ISSUED FOR CONST.	06/01/16
	REVISION	DATE
SHEET NO.		
14 OF 36		



**NOTE:**  
CONTRACTOR TO VERIFY LOCATION AND ELEVATION OF EXISTING UTILITIES PRIOR TO CONSTRUCTION.

**PLAN SPIRIT RE-USE LINE 87+50 - 98+00**  
**PROFILE SPIRIT RE-USE LINE 87+50 - 98+00**



J:\PROJECTS\2016\1501010623\_COW\_REUSE\_WATER\_SUPPLY\_SYSTEM\150623\_CAD\SYSTEMS\CIVIL\WTR15023\_CP-10.DWG