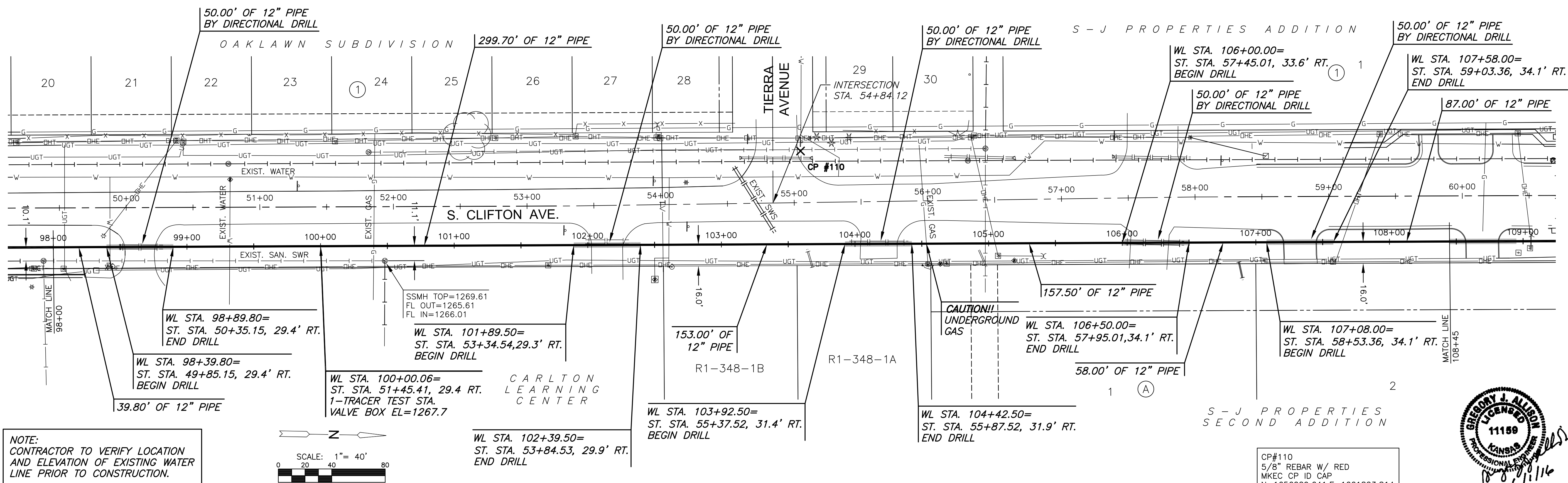
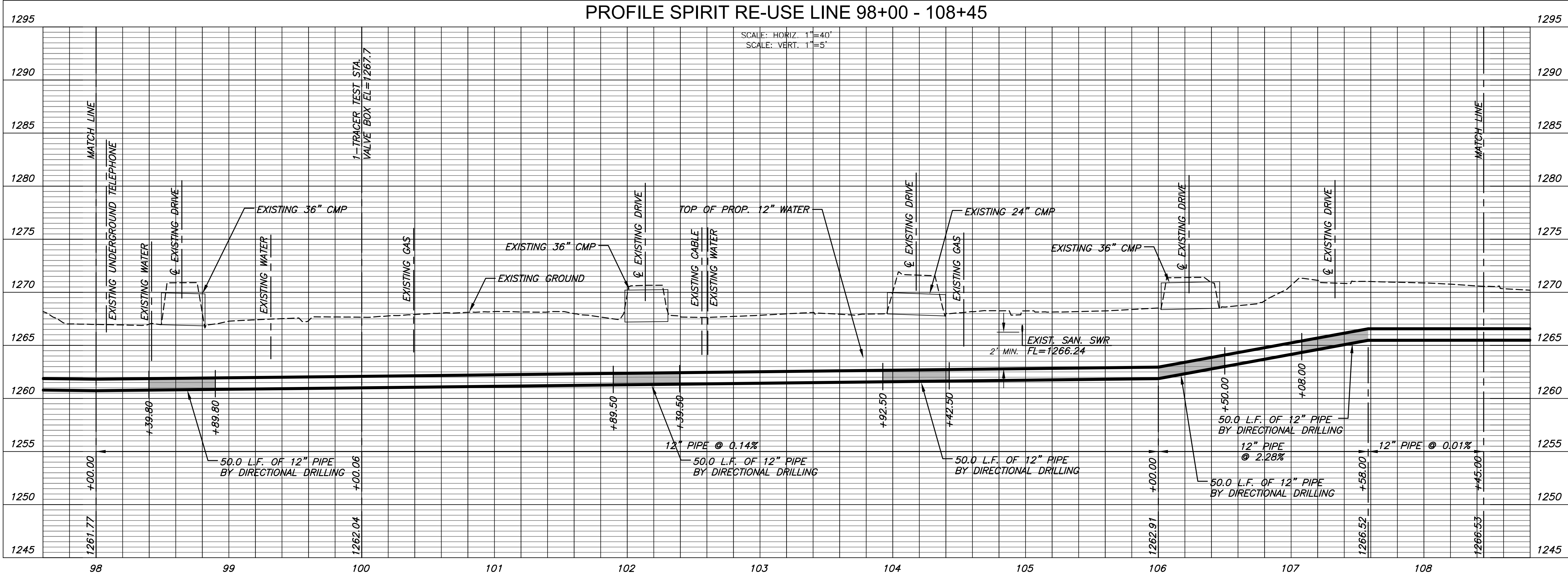


PLOTTED: Thursday, June 02, 2016 @ 11:24AM

J:\PROJECTS\2016\1501010623_COW_REUSE_WATER_SUPPLY_SYSTEM\SYSTEM_150623_CAD\SYSTEMS\CIVIL\WTR15023_CP-1.DWG



PLAN SPIRIT RE-USE LINE 98+00 - 108+45
 PROFILE SPIRIT RE-USE LINE 98+00 - 108+45



CITY OF WICHITA, KS
12\" RE-USE WATER PIPELINE
 TO SERVE SPIRIT AEROSYSTEMS

©2016 MKEC Engineering All Rights Reserved
 These drawings and their contents, including, but not limited to, all concepts, designs, & ideas are the exclusive property of MKEC Engineering (MKEC), and may not be used or reproduced in any way without the express consent of MKEC.

SPIRIT RE-USE LINE 98+00-108+45	
PROJECT NO.	468-85095
DATE	APRIL 2016
SCALE	1\" = 40'
DESIGNED	DRAWN
DFL	JWC
CHECKED	MAB
ISSUED FOR CONST. NO.	06/01/16
REVISION	DATE
SHEET NO.	15 OF 36