

PLOTTED: Thursday, June 02, 2016 @ 11:27AM

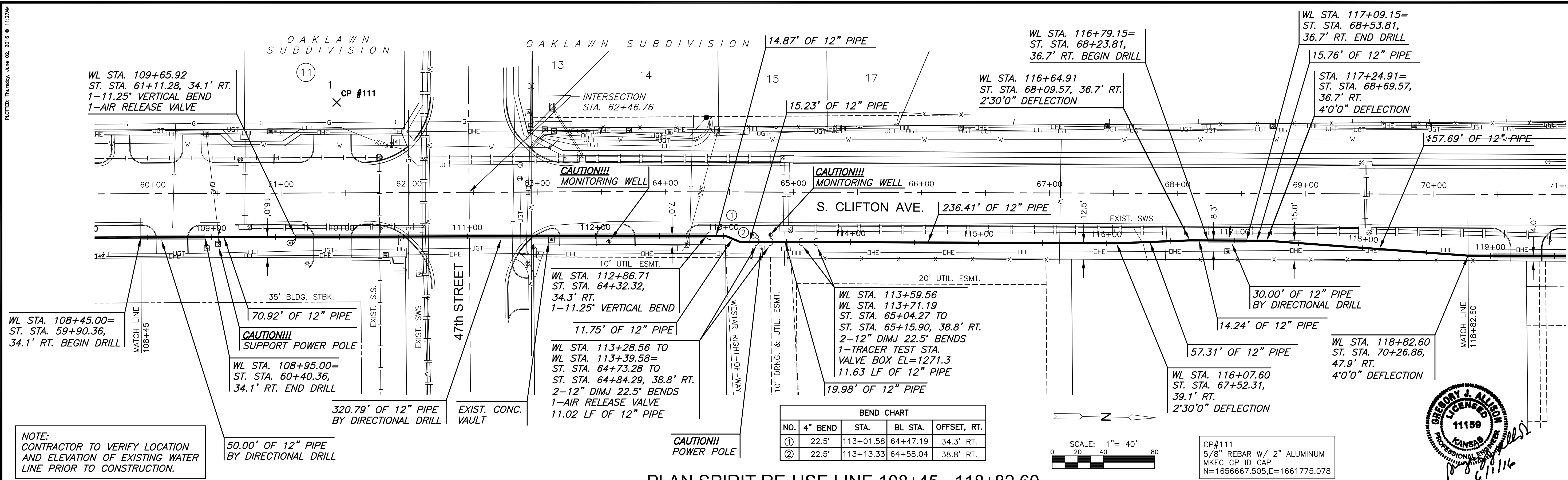
J:\PROJECTS\2016\1501010623_COW_REUSE_WATER_SUPPLY_SYSTEM\150623_CAD\SYSTEMS\CIVIL\WTR15023_CP-12.DWG



CITY OF WICHITA, KS
12" RE-USE WATER PIPELINE
 TO SERVE SPIRIT AEROSYSTEMS

©2016 MKEC Engineering All Rights Reserved
 These drawings and their contents, including, but not limited to, all concepts, designs, & ideas are the exclusive property of MKEC Engineering (MKEC), and may not be used or reproduced in any way without the express consent of MKEC.

SPIRIT RE-USE LINE 108+45-118+82.60	
PROJECT NO.	468-85095
DATE	APRIL 2016
SCALE	1" = 40'
DESIGNED	DRAWN
DFL	JWC
CHECKED	MAB
ISSUED FOR CONST.	06/01/16
NO.	REVISION
	DATE
SHEET NO. 16 OF 36	



PLAN SPIRIT RE-USE LINE 108+45 - 118+82.60
 PROFILE SPIRIT RE-USE LINE 108+45 - 118+82.60

