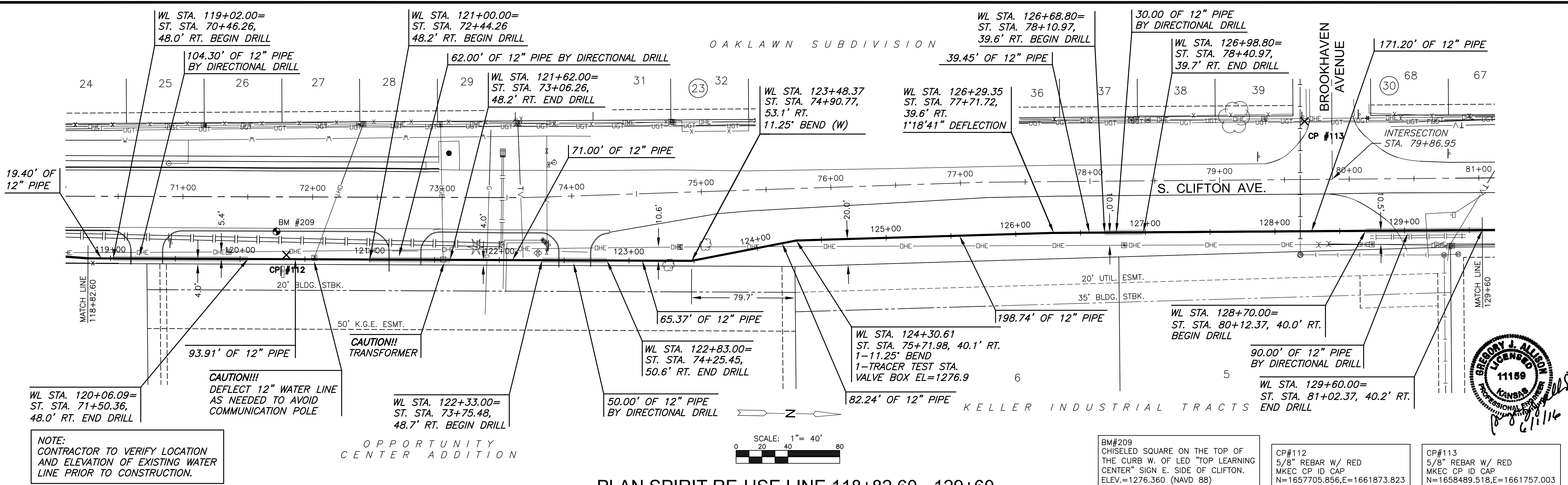
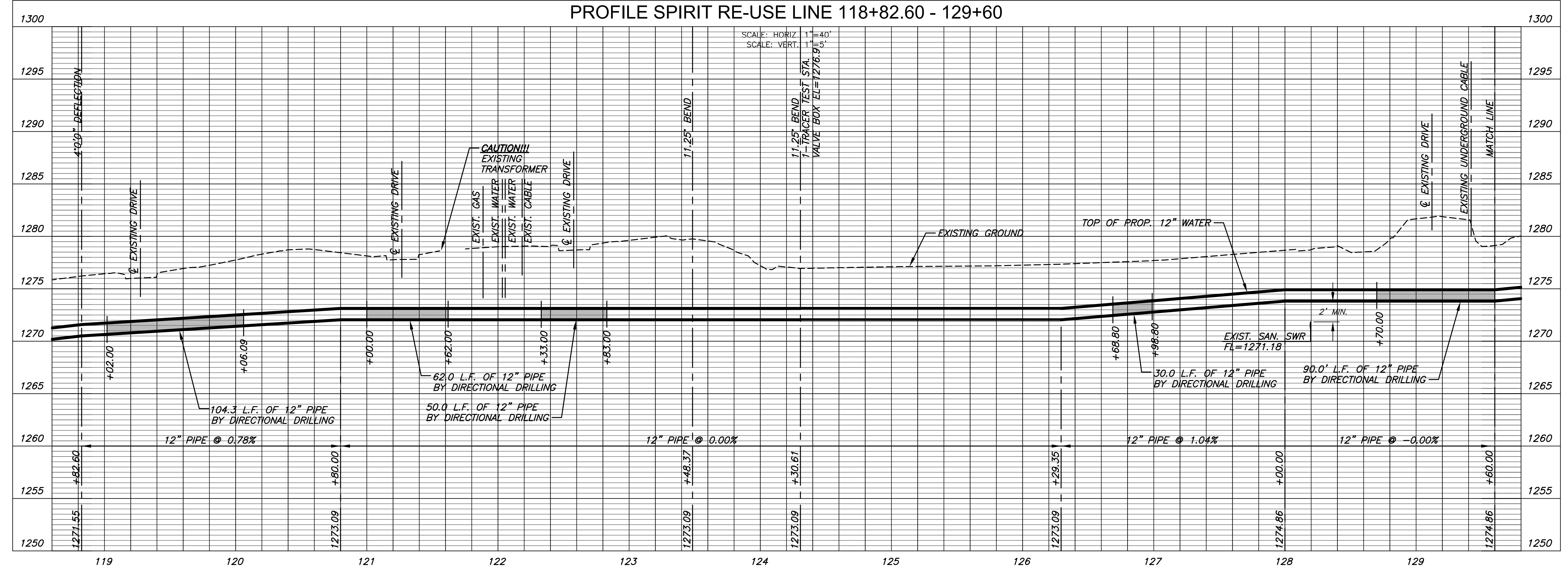


PLOTTED: Thursday, June 02, 2016 @ 11:31AM



PLAN SPIRIT RE-USE LINE 118+82.60 - 129+60  
 PROFILE SPIRIT RE-USE LINE 118+82.60 - 129+60



CITY OF WICHITA, KS  
**12" RE-USE WATER PIPELINE**  
 TO SERVE SPIRIT AEROSYSTEMS

©2016 MKEC Engineering All Rights Reserved  
 These drawings and their contents, including, but not limited to, all concepts, designs, & ideas are the exclusive property of MKEC Engineering (MKEC), and may not be used or reproduced in any way without the express consent of MKEC.

SPIRIT RE-USE LINE 118+82.60-129+60	
PROJECT NO.	468-85095
DATE	APRIL 2016
SCALE	1" = 40'
DESIGNED	DRAWN
DFL	JWC
CHECKED	MAB
ISSUED FOR CONST. NO.	06/01/16 DATE
SHEET NO.	17 OF 36