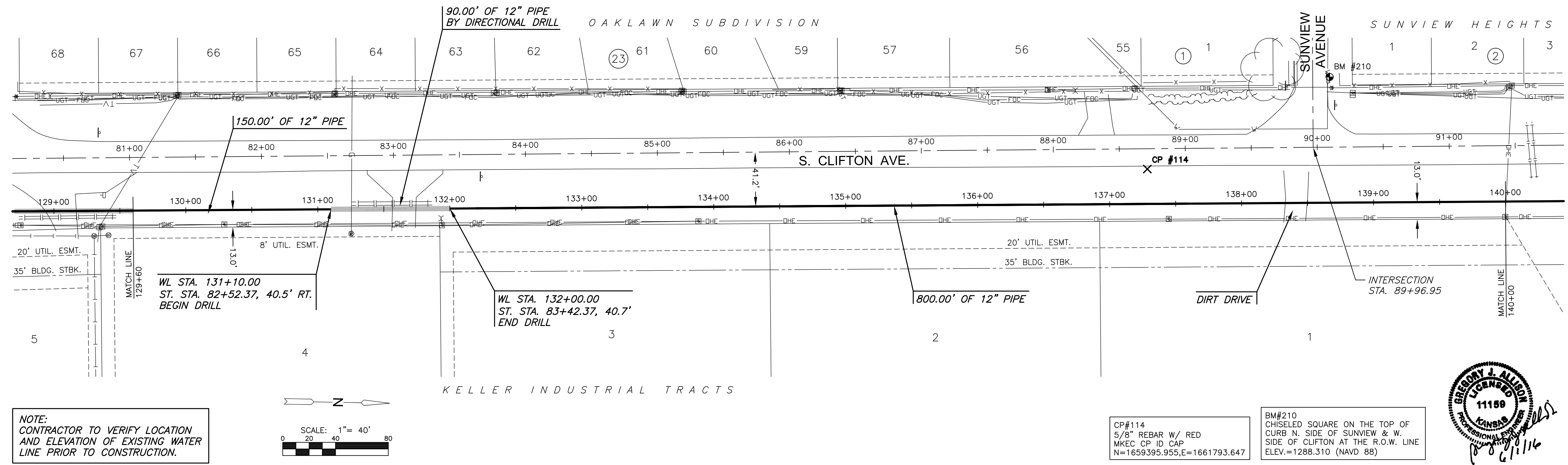
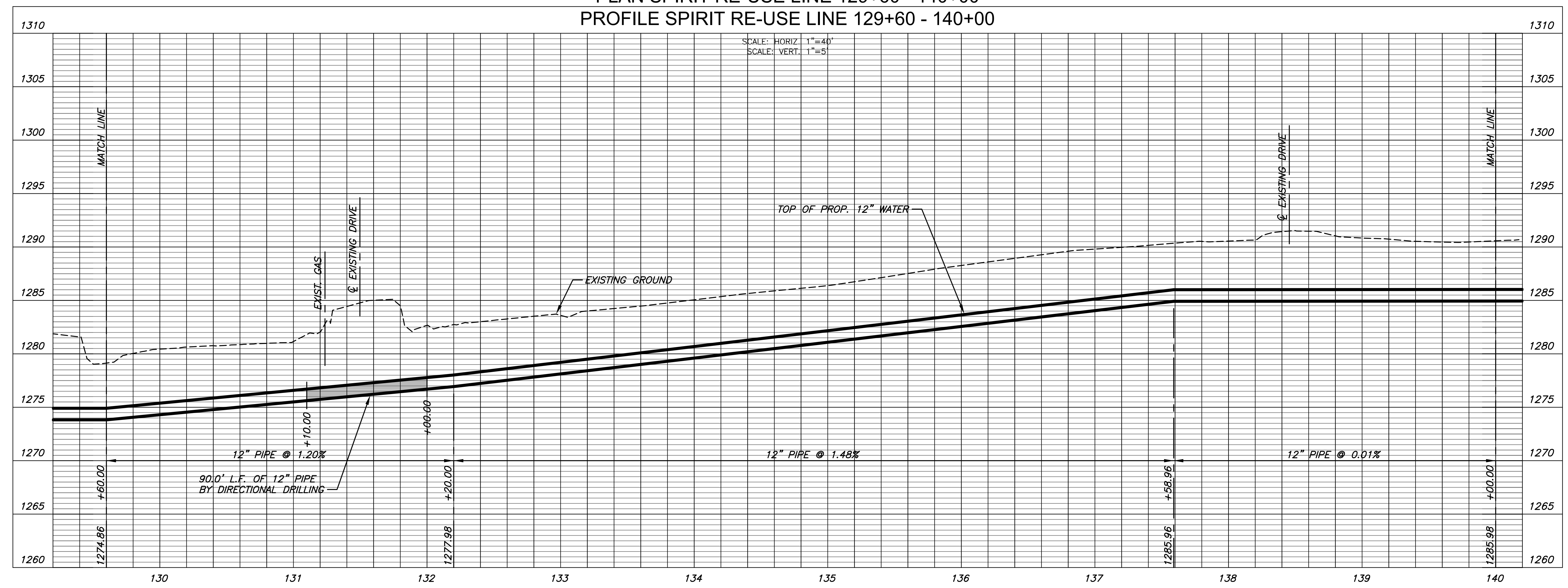


PLOTTED: Thursday, June 02, 2016 @ 11:35AM

J:\PROJECTS\2016\1501010623_COW_REUSE_WATER_SUPPLY_SYSTEM\SYSTEM_150623_CAD\SHOTS\05_CIVIL\TR115023_CP-14.DWG

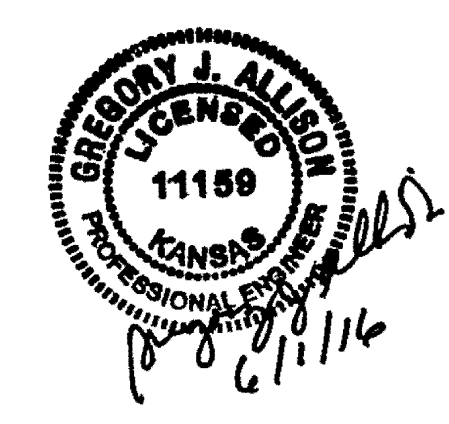


PLAN SPIRIT RE-USE LINE 129+60 - 140+00
 PROFILE SPIRIT RE-USE LINE 129+60 - 140+00



CP#114
 5/8" REBAR W/ RED
 MKEC CP ID CAP
 N=1659395.955,E=1661793.647

BM#210
 CHISELED SQUARE ON THE TOP OF
 CURB N. SIDE OF SUNVIEW & W.
 SIDE OF CLIFTON AT THE R.O.W. LINE
 ELEV.=1288.310 (NAVD 88)



CITY OF WICHITA, KS
12" RE-USE WATER PIPELINE
 TO SERVE SPIRIT AEROSYSTEMS

©2016 MKEC Engineering All Rights Reserved
 www.mkec.com
 These drawings and their contents, including, but not limited to, all concepts, designs, & ideas are the exclusive property of MKEC Engineering (MKEC), and may not be used or reproduced in any way without the express consent of MKEC.

SPIRIT RE-USE LINE 129+60-140+00	
PROJECT NO.	468-85095
DATE	APRIL 2016
SCALE	1" = 40'
DESIGNED	DRAWN
DFL	JWC
CHECKED	MAB
ISSUED FOR CONST. NO.	06/01/16
REVISION	DATE
SHEET NO. 18 OF 36	