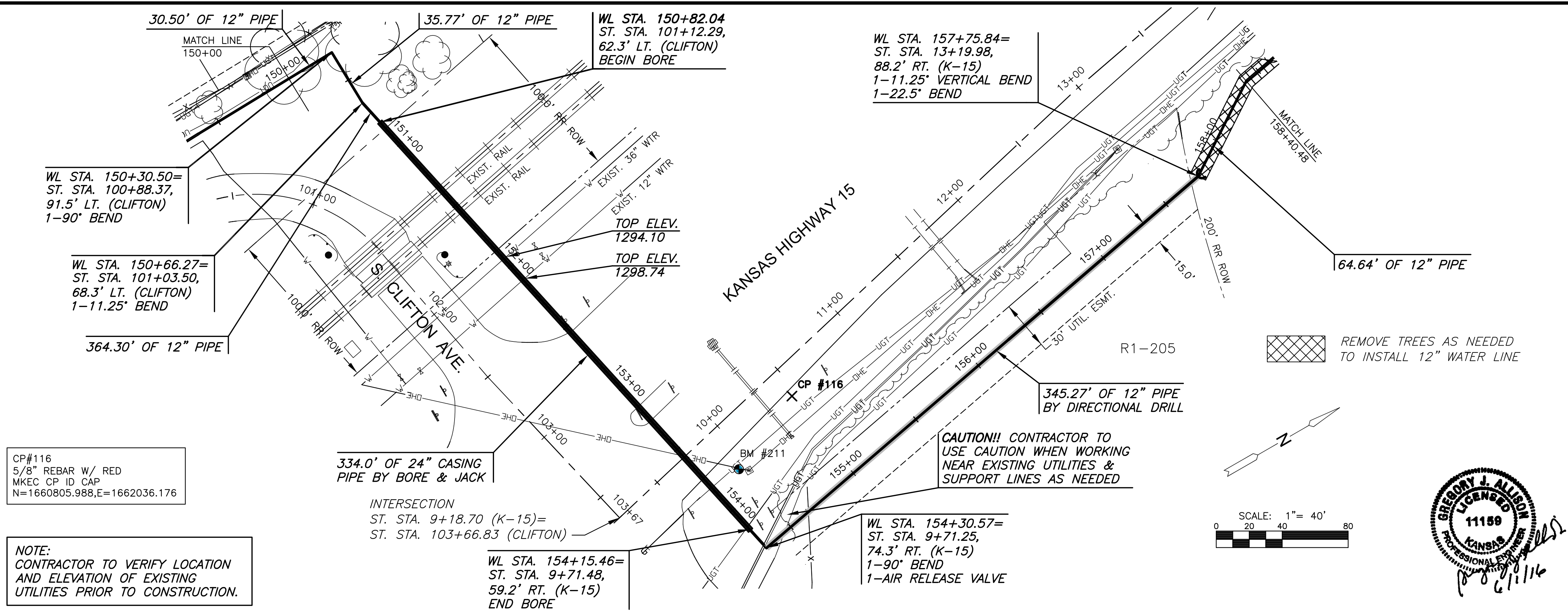


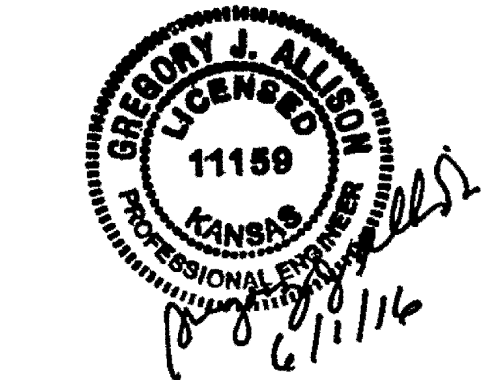
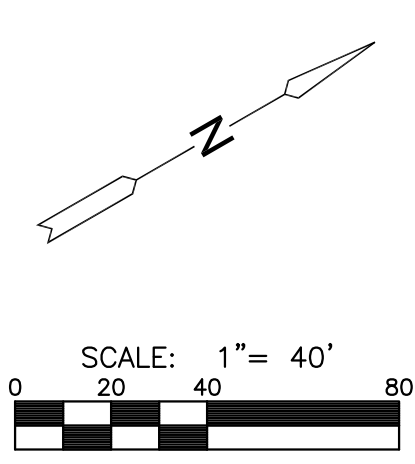
PLOTTED: Thursday, June 02, 2016 @ 11:24AM

J:\PROJECTS\2016\150100623_COW_REUSE_WATER_SUPPLY_SYSTEM\150623_CAD\SHOTS\05_CIVIL\WTR15023_CP-16.DWG

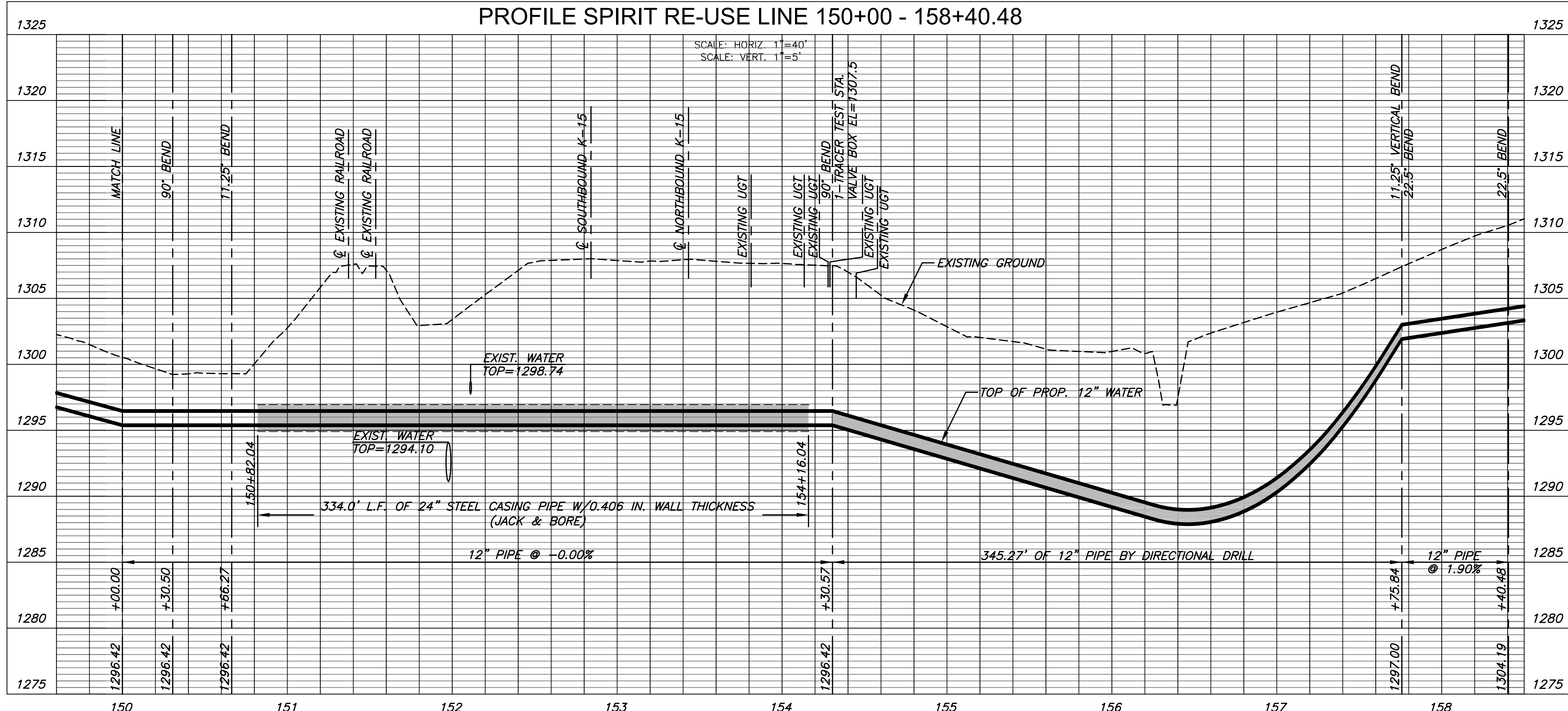


CP#116
5/8" REBAR W/ RED
MKEC CP ID CAP
N=1660805.988, E=1662036.176

NOTE:
CONTRACTOR TO VERIFY LOCATION
AND ELEVATION OF EXISTING
UTILITIES PRIOR TO CONSTRUCTION.



PLAN SPIRIT RE-USE LINE 150+00 - 158+40.48
PROFILE SPIRIT RE-USE LINE 150+00 - 158+40.48



CITY OF WICHITA, KS
12" RE-USE WATER PIPELINE
TO SERVE SPIRIT AEROSYSTEMS

©2016
MKEC Engineering
All Rights Reserved
www.mkec.com
These drawings and their contents, including, but not limited to, all concepts, designs, & ideas are the exclusive property of MKEC Engineering (MKEC), and may not be used or reproduced in any way without the express consent of MKEC.

| | | |
|-------------------------------------|-------------------|----------|
| SPIRIT RE-USE LINE 150+00-158+40.48 | | |
| PROJECT NO. | 468-85095 | |
| DATE | APRIL 2016 | |
| SCALE | 1" = 40' | |
| DESIGNED | DRAWN | CHECKED |
| DFL | JWC | MAB |
| NO. | ISSUED FOR CONST. | 06/01/16 |
| | REVISION | DATE |
| SHEET NO. | | |
| 20 OF 36 | | |