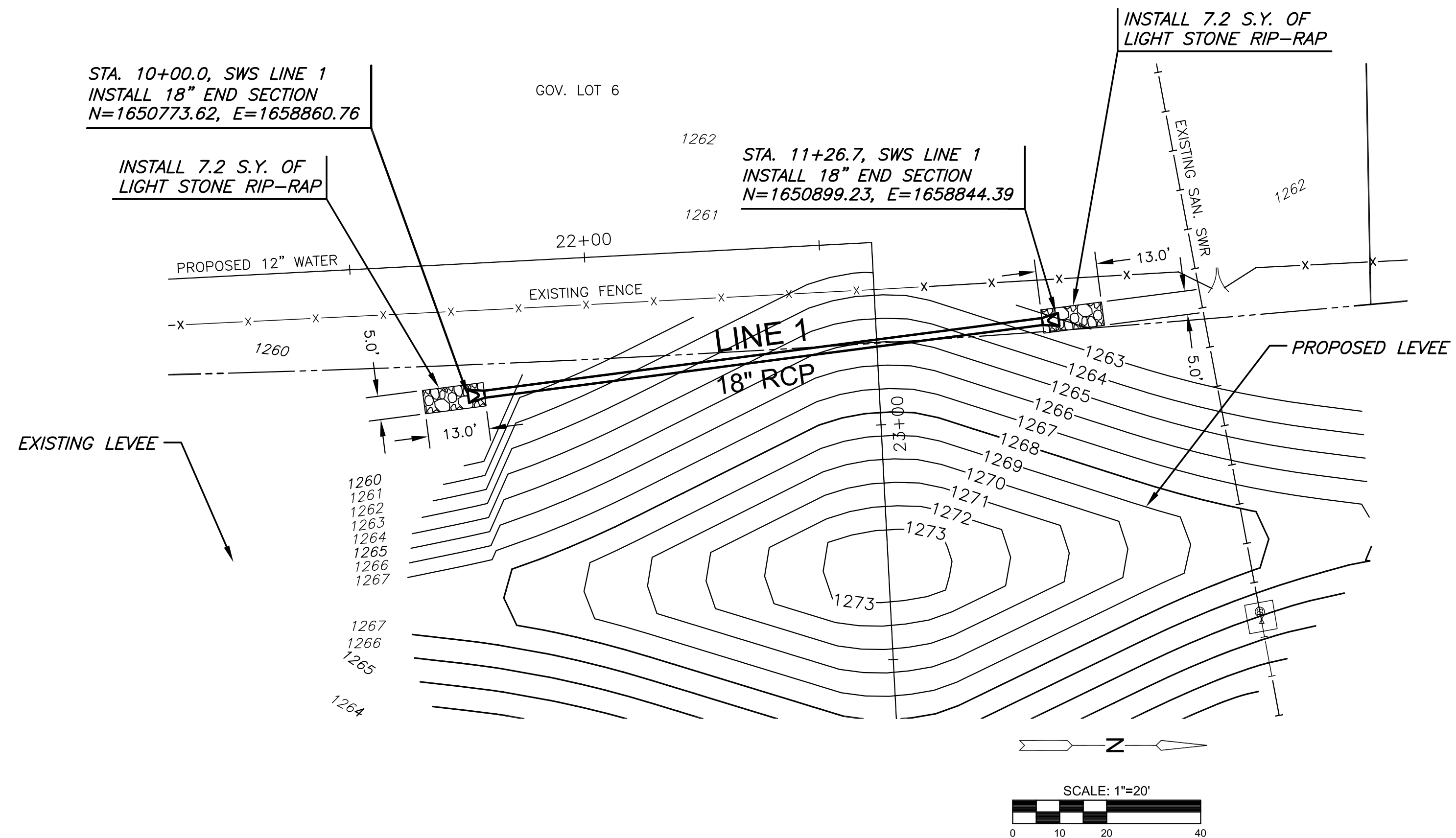
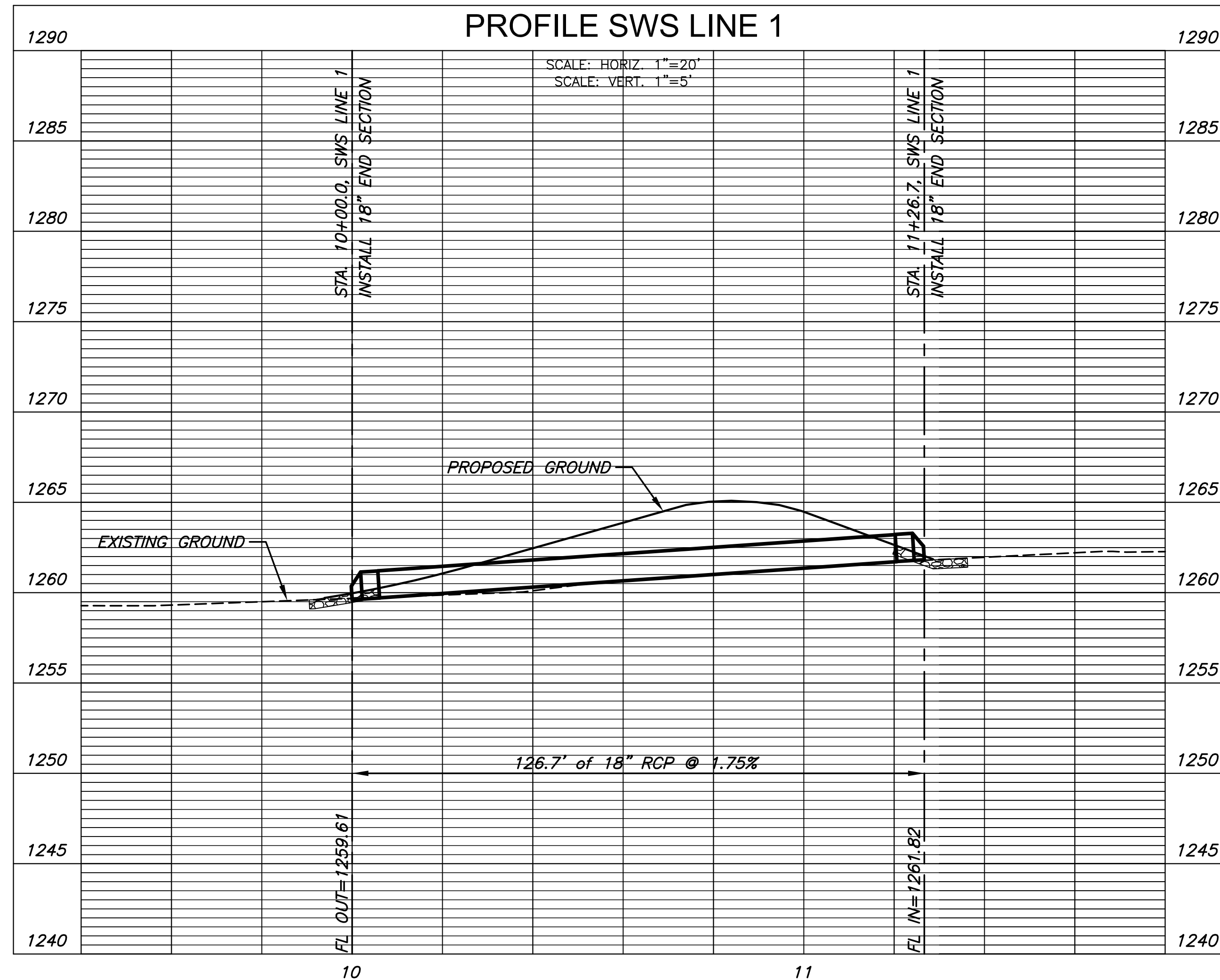


PLOTTED: Thursday, June 02, 2016 @ 12:35PM

J:\PROJECTS\2015\1501010623_COW_REUSE_WATER_SUPPLY_SYSTEM\SYSTEM_150623_CAD\SHOTS\05_CIVIL\SW150623_DP-01.DWG



PLAN SWS LINE 1
PROFILE SWS LINE 1



CITY OF WICHITA, KS
12" RE-USE WATER PIPELINE
TO SERVE SPIRIT AEROSYSTEMS

©2016 MKEC Engineering All Rights Reserved www.mkec.com
These drawings and their contents, including, but not limited to, all concepts, designs, & ideas are the exclusive property of MKEC Engineering (MKEC), and may not be used or reproduced in any way without the express consent of MKEC.

SWS LINE 1

PROJECT NO.	468-85095	
DATE	APRIL 2016	
SCALE	1" = 20'	
DESIGNED	DRAWN	CHECKED
DFL	JWC	MAB



ISSUED FOR CONST.	06/01/16	
NO.	REVISION	DATE