

©2016 MKEC Engineering All Rights Reserved www.mkec.com
These drawings and their contents, including, but not limited to, all concepts, designs, & ideas are the exclusive property of MKEC Engineering (MKEC), and may not be used or reproduced in any way without the express consent of MKEC.

BUBBLE MAP

PROJECT NO.	468-85095	
DATE	APRIL 2016	
SCALE	1" = 500'	
DESIGNED	DRAWN	CHECKED
DFL	JWC	MAB
NO.	ISSUED FOR CONST.	06/01/16
NO.	REVISION	DATE

SHEET NO.

WATER POINTS			
Point #	Northing	Easting	Desc.
1000	1649699.13	1658791.05	TIE IN
1001	1649699.75	1658825.55	90° BEND
1002	1649719.65	1658825.20	DEFLECTION
1003	1650531.73	1658845.12	DEFLECTION
1004	1650859.42	1658828.03	90° BEND
1005	1650862.72	1658891.32	11.25° VERTICAL BEND & AIR RELEASE
1006	1650863.39	1658904.30	11.25° VERTICAL BEND
1007	1650867.52	1658983.45	11.25° VERTICAL BEND
1008	1650874.02	1659108.14	11.25° VERTICAL BEND
1009	1650901.06	1659626.59	11.25° VERTICAL BEND
1010	1650903.48	1659673.02	45° BEND & 22.5° BEND
1011	1651269.94	1659802.89	45° BEND & 22.5° BEND
1012	1651270.19	1659814.57	11.25° VERTICAL BEND
1013	1651271.48	1659873.82	11.25° VERTICAL BEND & AIR RELEASE
1014	1651271.70	1659884.32	11.25° VERTICAL BEND
1015	1651272.69	1659930.23	11.25° VERTICAL BEND
1016	1651273.30	1659957.58	GATE VALVE

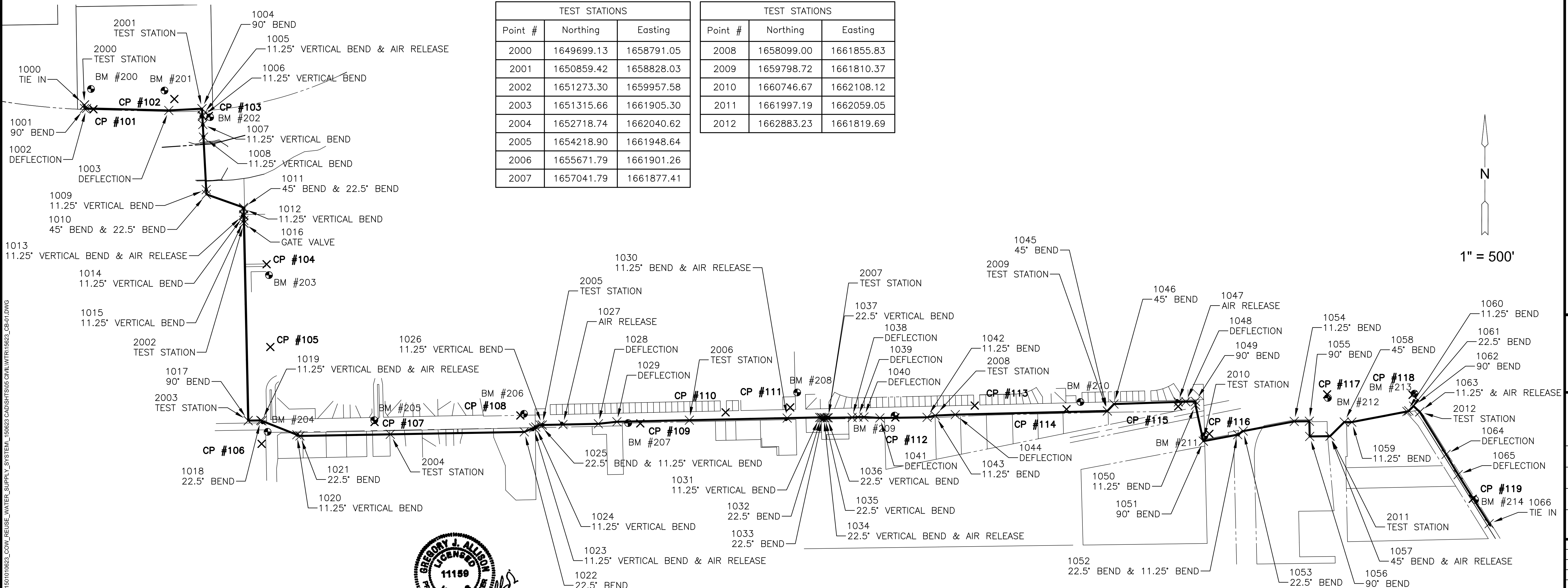
WATER POINTS			
Point #	Northing	Easting	Desc.
1017	1651315.66	1661905.30	90° BEND
1018	1651439.28	1661903.36	22.5° BEND
1019	1651450.86	1661907.94	11.25° VERTICAL BEND & AIR RELEASE
1020	1651796.17	1662044.53	11.25° VERTICAL BEND
1021	1651826.65	1662056.59	22.5° BEND
1022	1654041.67	1662016.94	22.5° BEND
1023	1654133.77	1661977.29	11.25° VERTICAL BEND & AIR RELEASE
1024	1654155.27	1661968.03	11.25° VERTICAL BEND
1025	1654199.35	1661949.06	22.5° BEND & 11.25° VERTICAL BEND
1026	1654218.90	1661948.64	11.25° VERTICAL BEND
1027	1654423.77	1661944.21	AIR RELEASE
1028	1654773.44	1661936.66	DEFLECTION
1029	1654955.93	1661916.72	DEFLECTION
1030	1656637.43	1661880.40	11.25° BEND & AIR RELEASE
1031	1656958.15	1661874.02	11.25° VERTICAL BEND
1032	1656973.02	1661873.82	22.5° BEND
1033	1656983.94	1661878.18	22.5° BEND

WATER POINTS			
Point #	Northing	Easting	Desc.
1034	1656999.17	1661877.97	22.5° VERTICAL BEND & AIR RELEASE
1035	1657010.15	1661877.83	22.5° VERTICAL BEND
1036	1657030.16	1661877.56	22.5° VERTICAL BEND
1037	1657041.79	1661877.41	22.5° VERTICAL BEND
1038	1657278.18	1661874.27	DEFLECTION
1039	1657335.40	1661871.01	DEFLECTION
1040	1657395.39	1661870.21	DEFLECTION
1041	1657552.83	1661879.12	DEFLECTION
1042	1658018.56	1661872.94	11.25° BEND
1043	1658099.00	1661855.83	11.25° BEND
1044	1658297.52	1661846.50	DEFLECTION
1045	1659798.72	1661810.37	45° BEND
1046	1659864.11	1661741.76	45° BEND
1047	1660499.71	1661721.06	AIR RELEASE
1048	1660573.78	1661718.65	DEFLECTION
1049	1660668.44	1661716.37	90° BEND
1050	1660669.30	1661752.14	11.25° BEND

WATER POINTS			
Point #	Northing	Easting	Desc.
1051	1660746.67	1662108.12	90° BEND
1052	1661085.94	1662044.04	22.5° BEND & 11.25° BEND
1053	1661140.03	1662008.66	22.5° BEND
1054	1661644.08	1661913.46	11.25° BEND
1055	1661793.40	1661911.59	90° BEND
1056	1661796.61	1662061.56	90° BEND
1057	1661997.19	1662059.05	45° BEND & AIR RELEASE
1058	1662138.11	1661919.52	45° BEND
1059	1662212.56	1661920.06	11.25° BEND
1060	1662756.88	1661815.96	11.25° BEND
1061	1662775.41	1661808.44	22.5° BEND
1062	1662822.35	1661762.19	90° BEND
1063	1662883.23	1661819.69	11.25° & AIR RELEASE
1064	1663143.22	1662237.91	DEFLECTION
1065	1663262.70	1662438.53	DEFLECTION
1066	1663568.61	1662922.32	TIE IN

TEST STATIONS		
Point #	Northing	Easting
2000	1649699.13	1658791.05
2001	1650859.42	1658828.03
2002	1651273.30	1659957.58
2003	1651315.66	1661905.30
2004	1652718.74	1662040.62
2005	1654218.90	1661948.64
2006	1655671.79	1661901.26
2007	1657041.79	1661877.41

TEST STATIONS		
Point #	Northing	Easting
2008	1658099.00	1661855.83
2009	1659798.72	1661810.37
2010	1660746.67	1662108.12
2011	1661997.19	1662059.05
2012	1662883.23	1661819.69



GREGORY J. ALLEN
LICENSED PROFESSIONAL ENGINEER
KANSAS
11159
6/1/16

EVERY ATTEMPT HAS BEEN MADE TO INSURE ALL COORDINATE VALUES SHOWN ARE AN ACCURATE AND TRUE REPRESENTATION OF THE CURRENT PLANS. ALL VALUES ARE TO BE CONFIRMED WITH THE FINAL SIGNED PLAN SET BEFORE USE.

J:\PROJECTS\2016\1601010623_COW_REUSE_WATER_SUPPLY_SYSTEM\160623_CAD\SYSTEMS\CIVIL\WTR16022_CB-01.DWG
 PLOTTED: Thursday, June 02, 2016 @ 01:35PM