

# GENERAL NOTES:

1. Contractor will be required to provide notice to utility companies a minimum of forty-eight (48) hours prior to any excavation, as follows:

Kansas One-Call 687-2470

The Contractor must notify the following in case of an emergency:

- Cox Communications 262-4270
- Kansas Gas Service 1-888-482-4950
- Westar Energy 383-8650
- Black Hills Energy 1-800-303-0357
- AT&T 268-2245
- City of Wichita Water Dept. 268-4563
- City of Wichita Sewer Maint. 268-4024
- City of Wichita Storm Sewer Maint. 268-4090
- City of Wichita Traffic Maint. 268-4034
- Conoco Phillips Pipeline Co. 1-877-267-2290
- Southern Star Pipeline Co. 529-6600
- Kinder-Morgan Pipeline Co. 1-888-844-5658

2. Utility service lines, poles, valve boxes, meters, and etcetera are to be adjusted as necessary by others prior to construction unless the plans specifically call for their adjustment by the Contractor or unless the plans specifically identify a utility to be adjusted by its owner during construction. Existing utilities and their location, as shown on the plans, represent the best information obtainable for design. The Contractor will be required to work around existing utilities within the right-of-way which do not conflict with proposed construction.

3. Rubble from the removal of miscellaneous structures and excess excavation which is to be wasted shall be disposed of on sites to be provided by the Contractor. These sites shall be approved by the Engineer as to suitability, appearance and site location. Locations, in the opinion of the Engineer, that will leave an unsightly appearance will not be approved. All disposal sites must be approved by the Kansas Department of Health and Environment. Material either stockpiled or disposed of in a flood plain would require a Kansas State Board of Agriculture permit. Any material dumped in waters of the United States or wetlands is subject to U.S. Corps. of Engineers permitting regulations. Any material buried or stockpiled beyond approved construction limits would require additional archaeological investigations unless buried in a previously approved borrow location.

4. Trees and shrubs in public right-of-way which are in direct conflict with proposed new construction shall be removed by the Contractor ONLY with the Developer or Baughman Company approval. Trees and shrubs which are not in direct conflict with proposed new construction shall be saved and protected from damage.

5. The Contractor shall give all property owners and/or tenants of developed property abutting the construction of this project a minimum of ten (10) days notice prior to start of construction.

6. The Contractor shall be responsible for preserving property irons. The Contractor will be required to re-establish any property irons which are damaged or destroyed by his construction operations. Such irons shall be re-established by a licensed Land Surveyor in accordance with state laws.

7. All existing and proposed erosion control measures including silt fencing, erosion control mat, straw bales, inlet barriers, and const. entrance shall be maintained throughout construction by the Contractor and until project is accepted by the City of Wichita. The on-site Engineer shall complete weekly reports on the status of erosion control measures. The Contractor shall be required to comply with maintenance and/or replacement of erosion control measures as determined by the on-site Engineer until project is accepted by City of Wichita. Maintenance and/or replacement of erosion control measures to be paid by L.S. bid item "Maintain Existing BMP's".

8. A saw cut of at least one-half the depth of existing surface courses or one-fourth the depth of the existing total pavement thickness shall be provided at locations where proposed construction abuts the existing surface course or pavement is required. Sawed joint to facilitate removal within three (3) feet of existing joints will not be permitted and for such instances the limits of removal shall extend to the existing joint. Such saw cuts will not be paid for directly and this cost shall be considered as subsidiary to the removal of the surface or pavement.

9. All areas disturbed during construction shall be seeded as noted on the Erosion Control Plan. Contractor shall prepare ground per City of Wichita Specifications. All costs associated with seeding shall be included in bid item "Project Seeding"

10. The Contractor shall adjust valve boxes as necessary to match proposed grade. Cost to be included in bid item, "Site Restoration."

11. Limits of earthwork shall match existing ground elevations at the right-of-way line unless otherwise noted on the plans with a new finished grade elevation. When a new finished grade elevation is shown, the

earthwork shall extend one foot beyond the right-of-way line and then slope up or down using permissible slopes to match the existing ground surface.

12. Contractor shall contact Engineer for availability and location of contractor borrow.

13. All areas disturbed during construction shall be seeded as follows (Temporary Seeding);  
Seed: Ryegrass: 5 lbs/1000 sq. ft.

All seeding operations shall conform to City of Wichita Standard Specifications. All costs associated with seeding shall be included in bid item "Project Seeding".

14. The Contractor shall remain outside of 990' radius from Bald Eagle Nest at all times as shown on Exhibit on Sheet 11. Contractor shall contact Charles Cape with the Kansas Dept. of Wildlife, Parks and Tourism at (316) 683-8069 or charles.cape@ksoutdoors.com at least 7 days prior to start of construction.

15. The developer for this project is Chris Stevens PH# 316 928-4051.

# STREET PAVING AND INCIDENTAL STORM WATER SEWER IMPROVEMENTS

to serve

## BLUE LAKE ADDITION- PHASE 3A

Blue Lake: From the south line of Lot 15, Block D to the north line of Lot 10, Block D

Blue Lake Ct.: From the west line of Blue Lake west to and including the cul-de-sac.

### CITY OF WICHITA, KANSAS

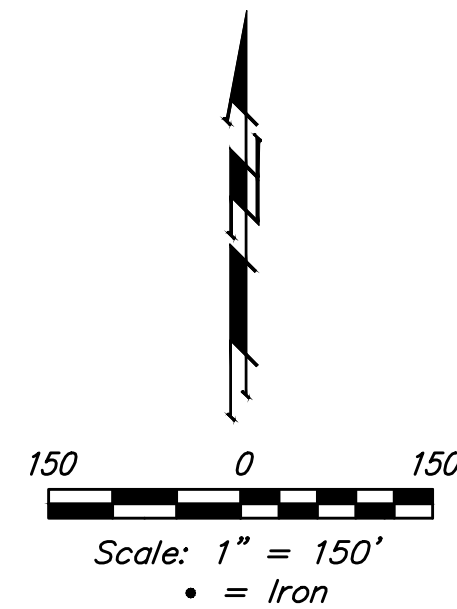
Gary Janzen, P.E. City Engineer

Project Number

472-84076

OCA Number

766363

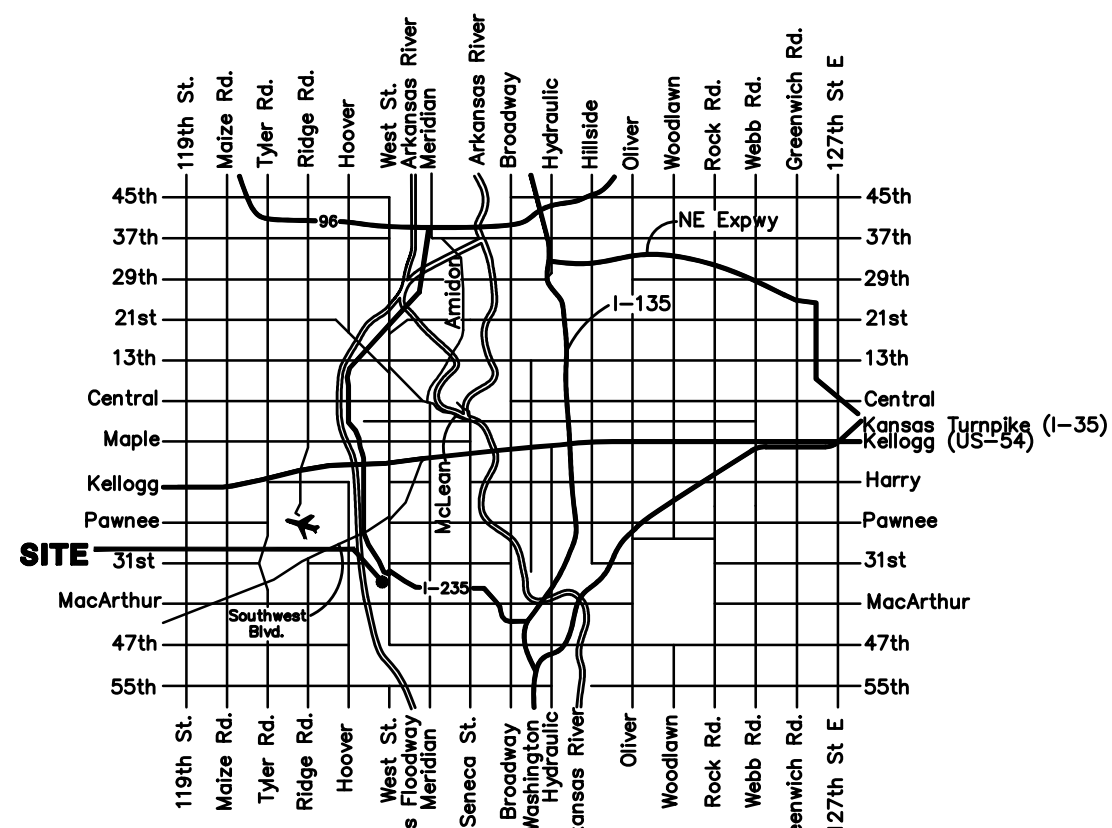


### SHEET INDEX

Title Sheet	1
Asphalt Paving Detail	2
Curb & Gutter Details	3
Sign Details	4
Valley Gutter Details	5
Pavement Underdrain Details	6
Bluelake	7
Bluelake Ct.	8
Bluelake Ct.	9
SWS Line 1	10
Eagles Nest Exhibit	11
Easement Grading/ Erosion Control	12
Erosion Control BMP Details	13-17
Std. Type 1A Curb Inlet Detail	18
Back Yard Inlet Detail	19
Ring & Cover Detail	20
Cross Sections	21-24
Coordinate Sheet	25
Copy of Plat	26

### BENCHMARKS

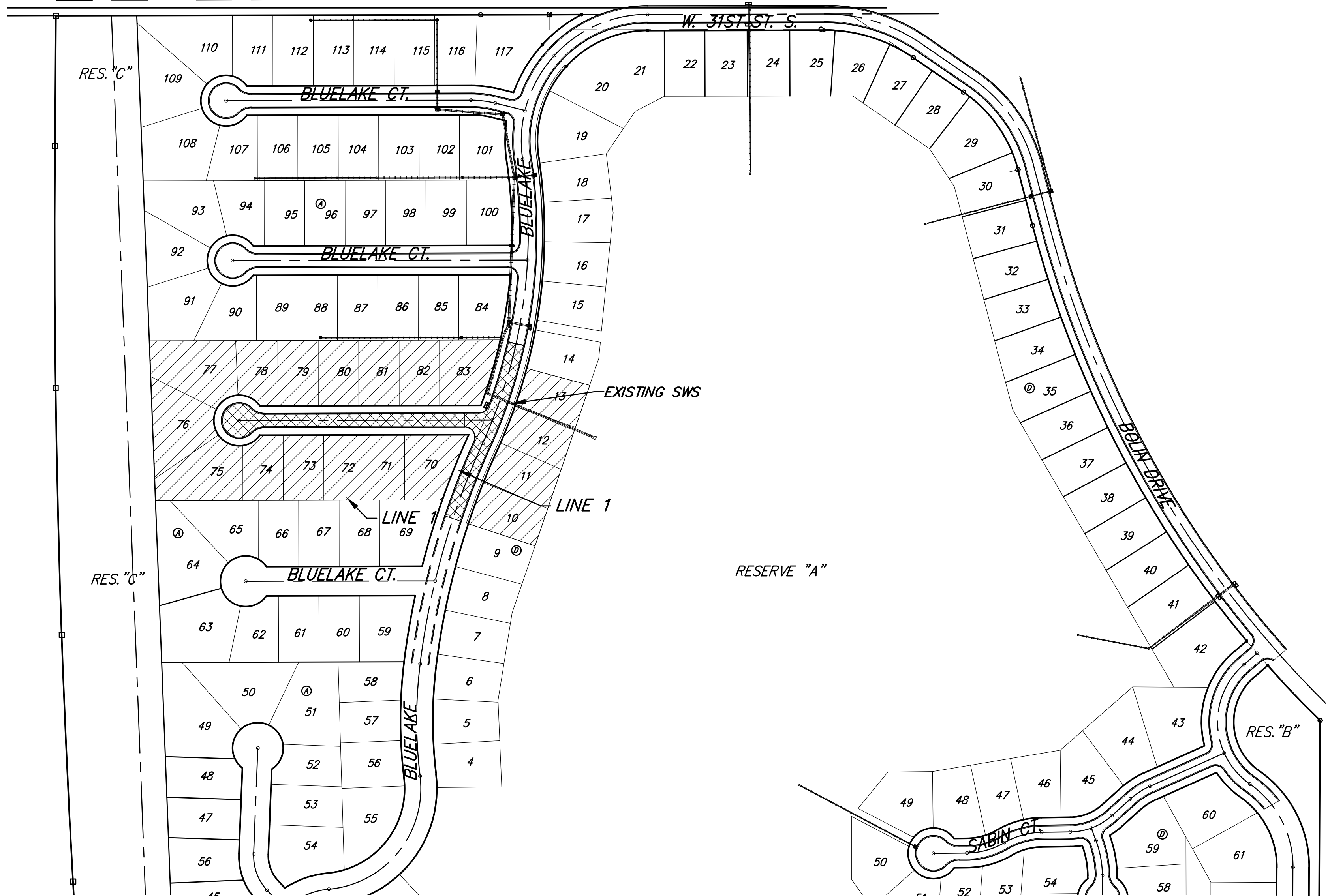
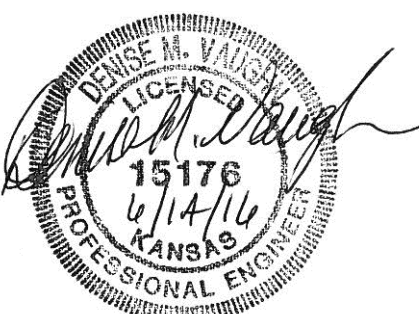
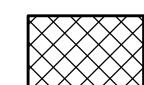
**BENCHMARKS:**  
 BM #1: "□" on top of South curb Bluelake Ct, Northwest corner of Lot 84, Block A, Blue Lake Addition  
 Elev. = 103.10 (City Datum)  
 BM #2: "□" Centerline face of Catch Basin, East curb Lot 84, Block A, Blue Lake Addition  
 Elev. = 101.95 (City Datum)



Vicinity Map

PROPOSED STREETS

BENEFIT DISTRICT



Project Earthwork Totals (CY unadjusted)			
Street (R/W)	Excavation	Loose Fill	Compacted Fill
Street (R/W)	122	2156	2526
Easement Grading	2059	628	-
<b>Project Total</b>	<b>2181</b>	<b>2784</b>	<b>2526</b>
<b>Total Project Length</b>			
870.07 L.F. = .16 Miles			



Baughman Company, P.A. 315 Ellis St. Wichita, KS 67211 P 316-262-7271 F 316-262-0149  
 ENGINEERING | SURVEYING | PLANNING | LANDSCAPE ARCHITECTURE