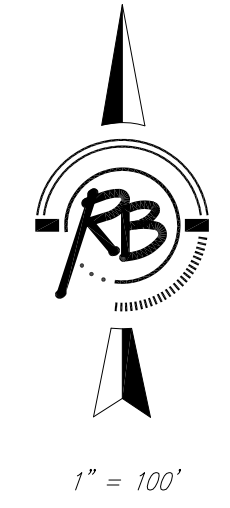
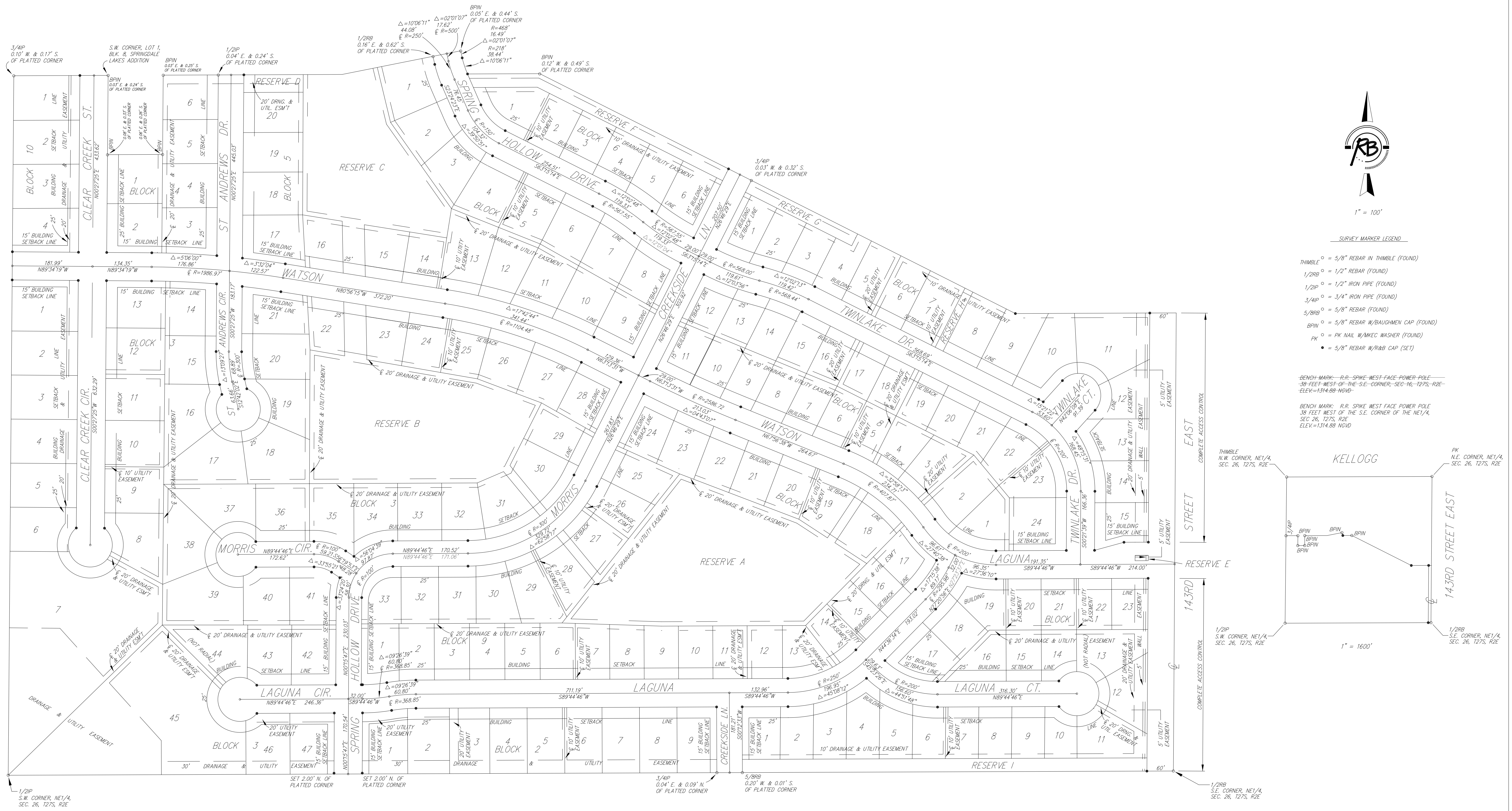


CLEAR CREEK ADDITION

Wichita, Sedgwick County, Kansas



1" = 100'

SURVEY MARKER LEGEND

- THIMBLE \circ = 5/8" REBAR IN THIMBLE (FOUND)
- 1/2RB \circ = 1/2" REBAR (FOUND)
- 1/2IP \circ = 1/2" IRON PIPE (FOUND)
- 3/4IP \circ = 3/4" IRON PIPE (FOUND)
- 5/8RB \circ = 5/8" REBAR (FOUND)
- \circ = 5/8" REBAR W/BAUGHMAN CAP (FOUND)
- PK \circ = PK NAIL W/MEC WASHER (FOUND)
- \bullet = 5/8" REBAR W/RAB CAP (SET)

BENCH-MARK: R-R SPIKE WEST FACE POWER POLE
38 FEET WEST OF THE S.E. CORNER, SEC. 16, T27S, R2E
ELEV.=1314.88 NGVD

BENCH-MARK: R-R SPIKE WEST FACE POWER POLE
38 FEET WEST OF THE S.E. CORNER OF THE NE1/4
SEC. 26, T27S, R2E
ELEV.=1314.88 NGVD

