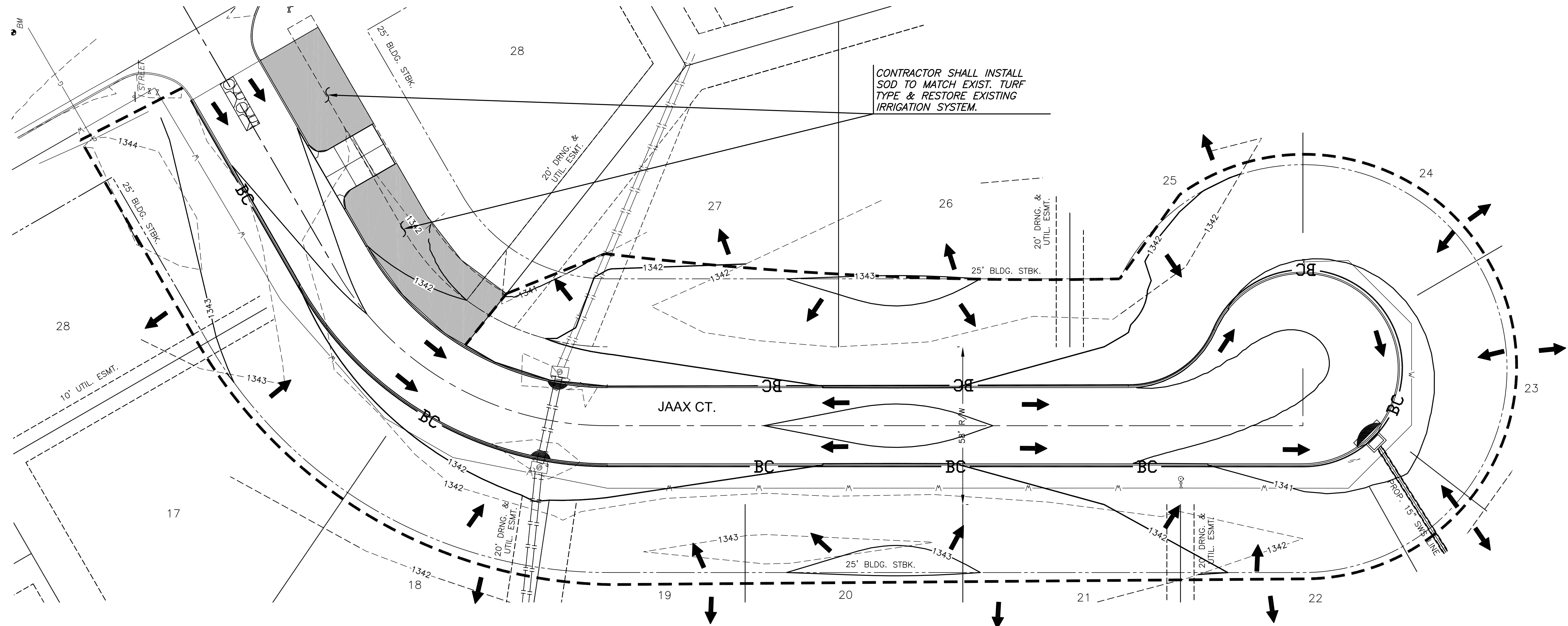
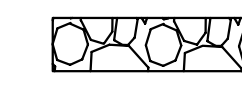

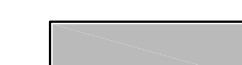


PAVING & INCIDENTAL DRAINAGE FOR  
**BAY COUNTRY ADDITION**  
PHASE 2



**LEGEND**

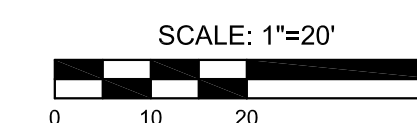
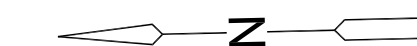
- 1370 --- EXIST. CONTOUR
- 1370 — PROP. CONTOUR
- W — WATERLINE
- S — SANITARY SEWER
- SS — STORMWATER SEWER
- UGE — UNDERGROUND ELECTRICAL
- G — GAS LINE
- UGT — UNDERGROUND TELEPHONE
- ➔ FLOW ARROW
- BC — BACK OF CURB PROTECTION (915 LF)
-  STABILIZED CONSTRUCTION ENTRANCE
-  CURB INLET PROTECTION (3)
- - - SEEDING LIMITS (0.96 AC.)
-  SOD LIMITS (296 SY)

**EROSION CONTROL/SEEDING NOTES**

1. EROSION CONTROL IS TO MEET ALL FEDERAL, STATE, COUNTY AND LOCAL CODE STANDARDS.
2. COVER CROP SEEDING MIX: ALL AREAS DISTURBED WITH EXCEPTION OF PROPOSED STREET PAVEMENT SHALL BE SEEDED (COST SUBSIDIARY TO PROJECT) AND FERTILIZED AS FOLLOWS IMMEDIATELY AFTER GRADING OPERATIONS ARE COMPLETE:
  - OATS @ 45 LBS./ACRE
  - "REGREEN" STERILE WHEAT @ 45 LBS./ACRE
  - CANADA WILD RYE @ 20 LBS./ACRE
  - 110 LBS./ACRE TOTAL
  - SLOW RELEASE @ 150 LBS./ACRE
3. ALL AREAS SHALL BE FINE GRADED AND SURFACE SHALL BE FREE FROM LIMBS, STONES, AND OTHER EXTRANEIOUS MATERIALS.
4. CONTRACTOR SHALL PROVIDE EROSION PROTECTION THROUGHOUT PROJECT CONSTRUCTION. THE PLAN PROVIDED HERE IS FOR FINAL PROTECTION, VARIOUS PHASES OF THIS PLAN SHALL BE IMPLEMENTED OR MODIFIED TO CONTROL EROSION. MODIFICATIONS OF THE PLAN SHALL BE APPROVED BY THE OWNER'S REPRESENTATIVE.
5. SEEDING AREAS SHALL BE PREPARED FOR PLANTING WITH COMMON AGRICULTURAL TECHNIQUES. APPROVE WITH OWNER'S REPRESENTATIVE BEFORE PLANTING.
6. ALL SEED SHALL BE DISTRIBUTED WITH AN ACCEPTABLE DRILL INTENDED FOR SUCH OPERATIONS, OR OTHER EQUIPMENT APPROVED BY THE OWNER'S REPRESENTATIVE. SEEDING DEPTH SHALL BE 1/4 OF AN INCH.
7. ALL SEEDED AREAS SHALL BE IMMEDIATELY MULCHED WITH CLEAN PRAIRIE HAY CERTIFIED BY THE NORTH AMERICAN FORAGE ASSOCIATION AT 2 TONS/ACRE. ANCHOR MULCH BY CRIMPING INTO TOPSOIL WITH SUITABLE MECHANICAL EQUIPMENT.
8. CONTRACTOR IS RESPONSIBLE FOR MAINTAINING AND IMPLEMENTING ALL EROSION CONTROL.
9. IN ORDER TO PREVENT SILT OR SEDIMENT FROM ENTERING ADJACENT PROPERTIES, APPROPRIATE BMP'S SHALL BE IMPLEMENTED WITHIN THE PROJECT.
10. ANY MUD TRACKED ONTO ADJACENT PAVED AREAS OR STREETS SHALL BE REMOVED AT THE END OF EACH WORK DAY.
11. PER THE REQUIREMENTS OF THE NOI/SWPPP, BMP INSPECTION REPORTS SHALL BE COMPLETED BY THE CONTRACTOR WEEKLY AND WITHIN 24 HOURS AFTER A 1/2" RAIN. REPORTS SHALL BE KEPT WITH THE SWPPP ON SITE.
12. CONTRACTOR SHALL PROVIDE A SIGN NEAR THE ENTRANCE WITH THE FOLLOWING INFORMATION:
  - A. CONTACT NAME AND INFORMATION
  - B. A COPY OF THE NOI
  - C. LOCATION OF SWPPP
14. CONTRACTOR SHALL MAINTAIN ALL EROSION CONTROL DEVICES IN-PLACE PRIOR TO AND DURING CONSTRUCTION.

**NOTE:**

CONTRACTOR TO WASTE ADDITIONAL EXCAVATION ON LOT 18 THROUGH 26, BEHIND THE SETBACK LINE. INSTALL NO THICKER THAN 8" & SLOPE TO DRAIN.



©2016 MKEC Engineering All Rights Reserved www.mkec.com  
These drawings and their contents, including, but not limited to, all concepts, designs, & ideas are the exclusive property of MKEC Engineering (MKEC), and may not be used or reproduced in any way without the express consent of MKEC.

**SITE REST. & EROSION CONTROL**

PROJECT NO. 472-85104

DATE JUNE 2016

SCALE 1"=20'

DESIGNED	DRAWN	CHECKED
SPE	CRM	SPE

NO.	REVISION	DATE

SHEET NO.