

GENERAL NOTES:

- Contractor will be required to provide notice to utility companies a minimum of twenty-four (24) hours prior to any excavation, as follows:

Kansas One-Call (316)687-2470

The Contractor must notify the following in case of an emergency:

Cox Communications (316)262-4270
or (316)263-2061

Westar Energy/
Kansas Gas & Electric Company (800)482-4950
AT&T 1-555-1212
City of Wichita Water Department (316)268-4908
City of Wichita Sewer Department (316)268-4071
Aquila Natural Gas (316)941-1608
or (800)303-0357

- Exist. utilities and their locations, as shown on the plans, represent the best information attainable for design. Location information has been obtained from the various utility companies and is either from company record drawings or company-provided field locations. The Contractor will be required to work around existing utilities which do not conflict with proposed constructions.

- The Contractor to verify utility locations prior to construction of this project.

- Utility service and installation shall be coordinated with the respective utility owner. Contacts are:

Kansas Gas Service Jim Coe (316)832-3126
Westar Energy Miles Capps (316)261-6251
Aquila Networks Calvin Briggs (316)942-8811
Wichita Water & Sewer Kerry Gibson (316)268-4555
AT&T Jim Toben (316)268-2759
Cox Communications Mark Anaya (316)262-4270

- All lawn/turf areas disturbed by construction of proposed improvements shall be restored with the same grass as existing. Restoration of disturbed areas shall include, but not limited to, soil preparation, fertilizing, seeding, mulching (all seeded areas, outside the limits of erosion mat placement), and/or reseeding, and installation of erosion control mat. All seeding work shall be in accordance with the City of Wichita Standard Specifications and the City of Wichita Administrative Regulations No. AR 6.5 which governs cleanup and respiration or replacement following construction. All cost for the soil preparation, seeding and mulching (all seeded areas, outside the limits of erosion mat placement) shall be paid for through the lump sum bid item for "Seeding." All seeded areas within eight feet of the back of new curb shall be covered with an approved erosion mat, which shall be paid for by the measured quantity bid item "Back of Curb Protection (8' wide)."

- Traffic affected by the construction of this project shall be handled in accordance with the latest edition of the Manual on Uniform Traffic Control Devices.

- It is the contractor's responsibility to visit this site to better understand the extent of site clearing and restoration to be performed. Site Clearing and Restoration shall include all costs for removal of items which a pay item is not provided.

- The contractor shall be responsible for preserving property irons. The contractor will be required to re-establish any property irons which are damaged or destroyed by the construction operations. Such irons shall be re-established by a licensed land surveyor in accordance with state laws.

- Properties within the project limits may have underground sprinkler systems in public right-of-way which conflict with new construction. Contractor will be required to remove such improvements should they not be removed by their owner at the time of construction of the project. The contractor will be required to salvage all sprinkler heads and/or valves and give such material to owner. Portions of underground sprinkler systems not in conflict with new construction shall be protected from damage and shall remain in place. All work in connection with underground sprinkler systems shall be considered as subsidiary to the contract pay items for work.

- Cuts made in paved surfaces on public property will be repaired by the City's Contractor and charged against the contractor. Unit Repair prices are available from the city at 268-4418. A surcharge may be applicable. Call 268-4418 for details. Repair costs to be paid prior to release of utility service if utilities are effected.

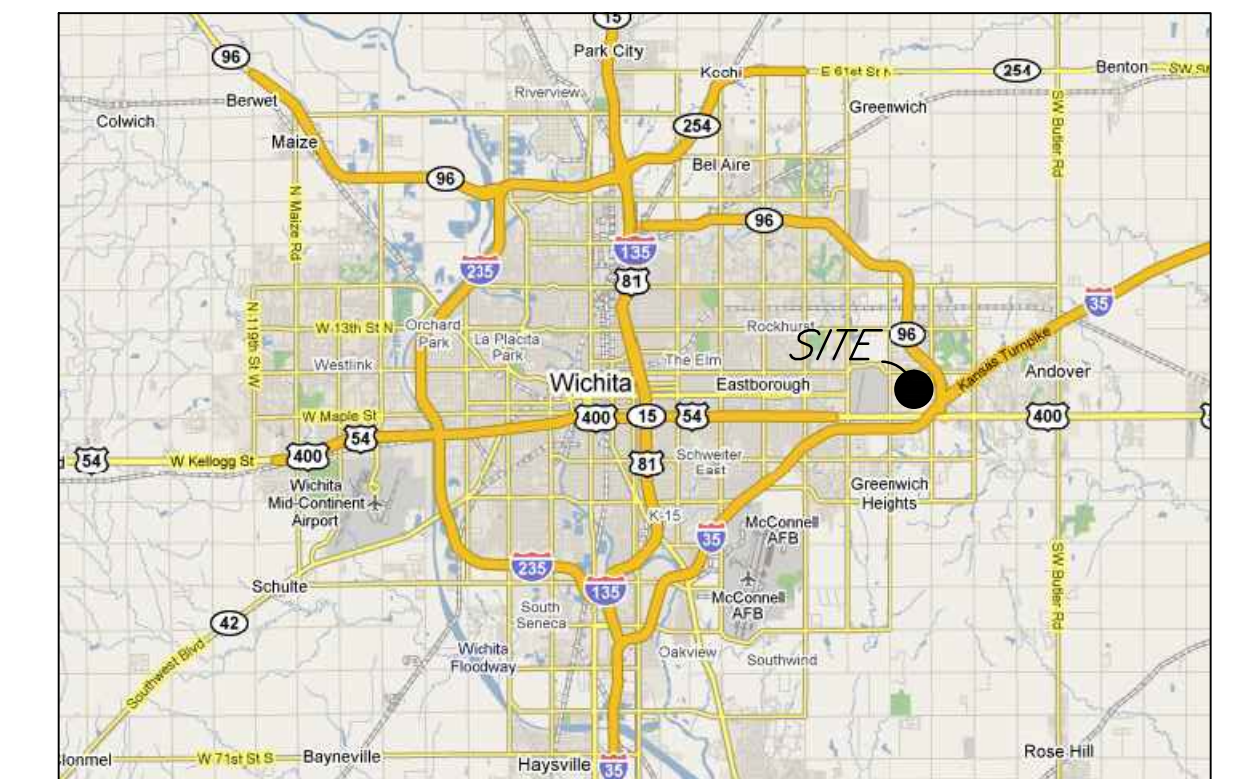
LATERAL 445, FOUR MILE CREEK SEWER LOTS 1-8, BLOCK A, MARINITA ADDITION (East of Greenwich, South of Central)

Project No. 468-85065

OCA: 744406

CITY OF WICHITA, KANSAS
Gary Janzen, P.E., City Engineer

Dutton Construction - Contractor
J. Brand - City of Wichita, Field Project Engineer
K. Yale - City of Wichita, Inspector
As-built
Stub
Release Date: 5/2/2016
pdf: 07/22/2016 apr



LOCATION MAP
(For Visual Use Only)

INDEX OF SHEETS:

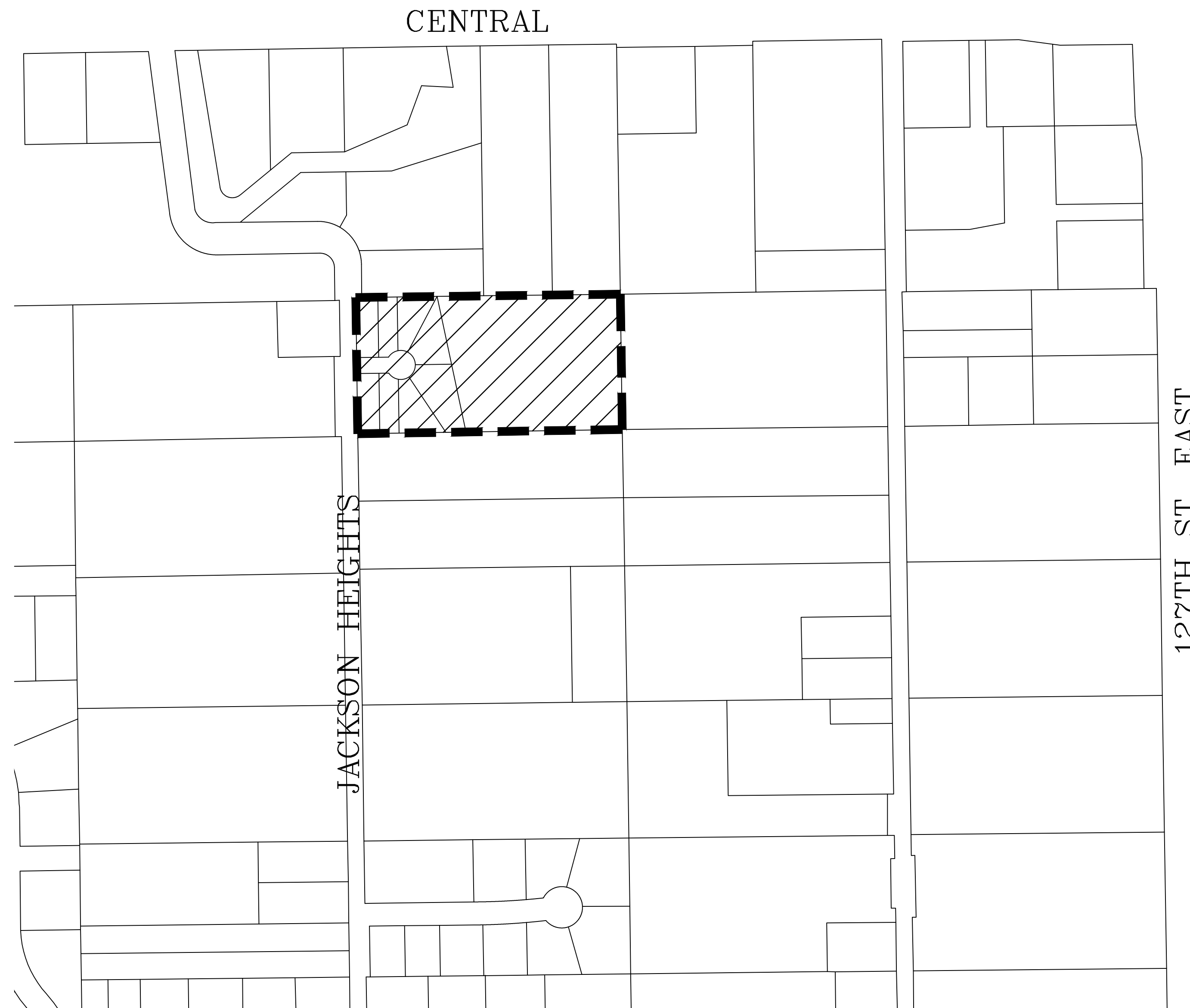
- | | |
|----|---------------------------|
| 1 | Cover Sheet |
| 2 | Control Map/Plan Sheet |
| 3 | Plan and Profile |
| 4 | Standard Sanitary Details |
| 5 | Standard Sanitary Details |
| 6 | Erosion Control Plan |
| 7 | Erosion Details |
| 8 | Erosion Details |
| 9 | Erosion Details |
| 10 | Erosion Details |
| 11 | Erosion Details |
| 12 | Copy of Plat |

BENEFIT DISTRICTS:

Benefit Area

BENCHMARK:

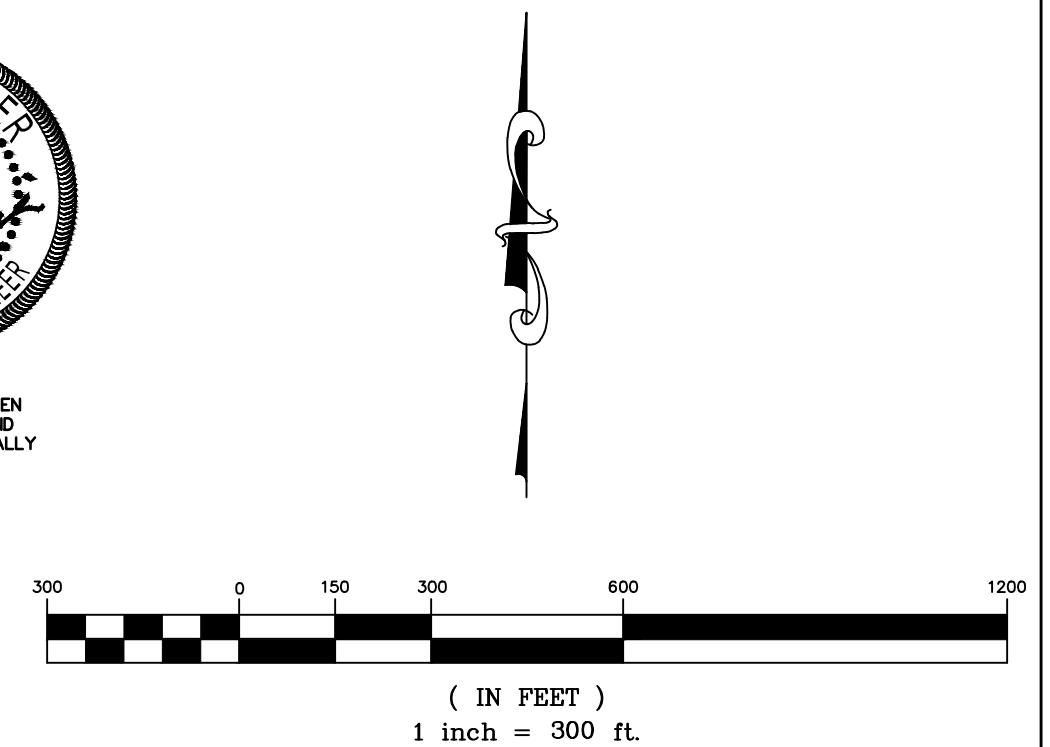
North rim of manhole located approximately 15' north and 44 feet west of the northwest corner of subject property.
Elev. = 1354.38 NAVD88



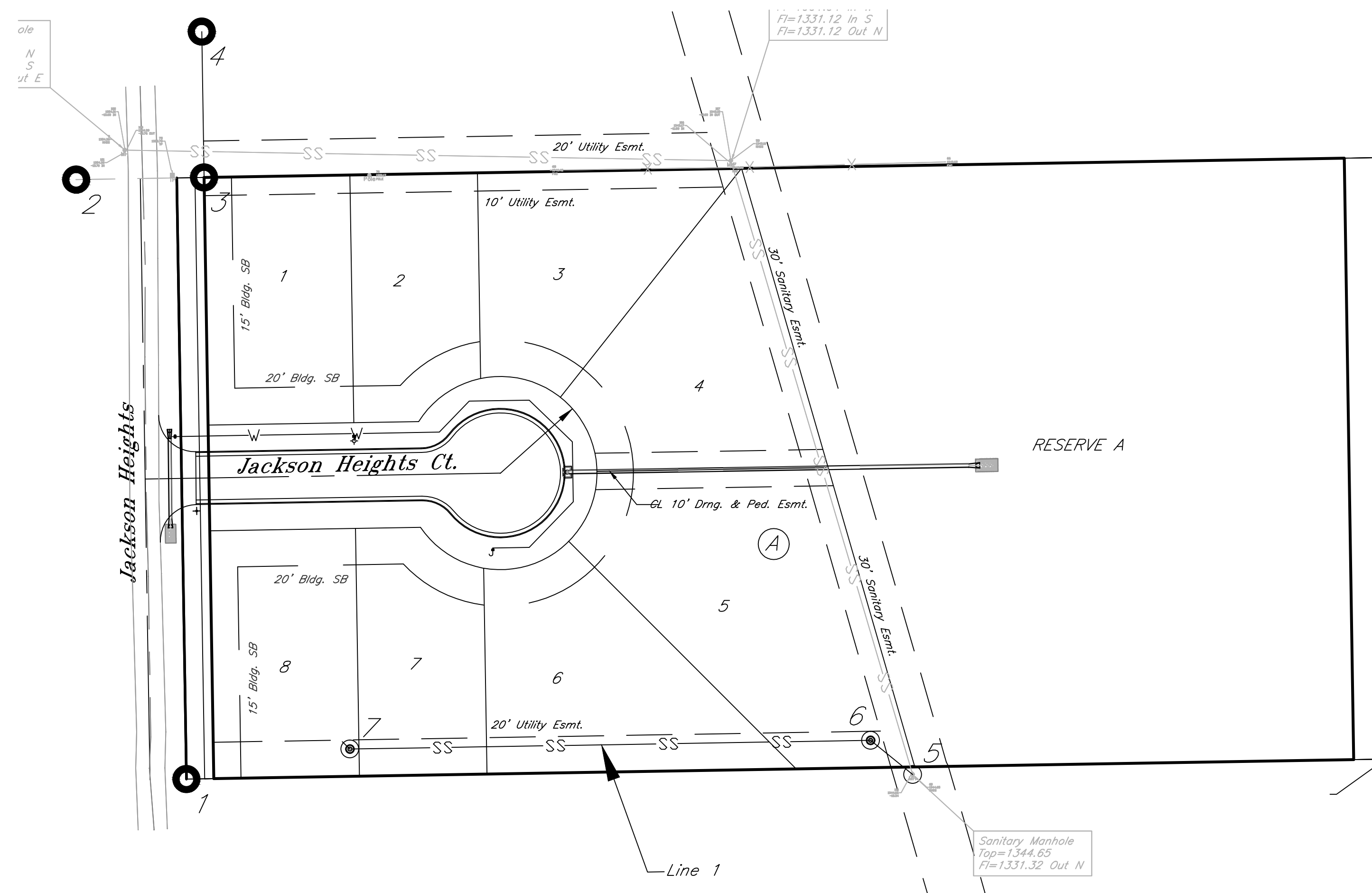
November 2015



DATE: 11.3.2016
THIS SHEET HAS BEEN
SIGNED, SEALED AND
DATED ELECTRONICALLY



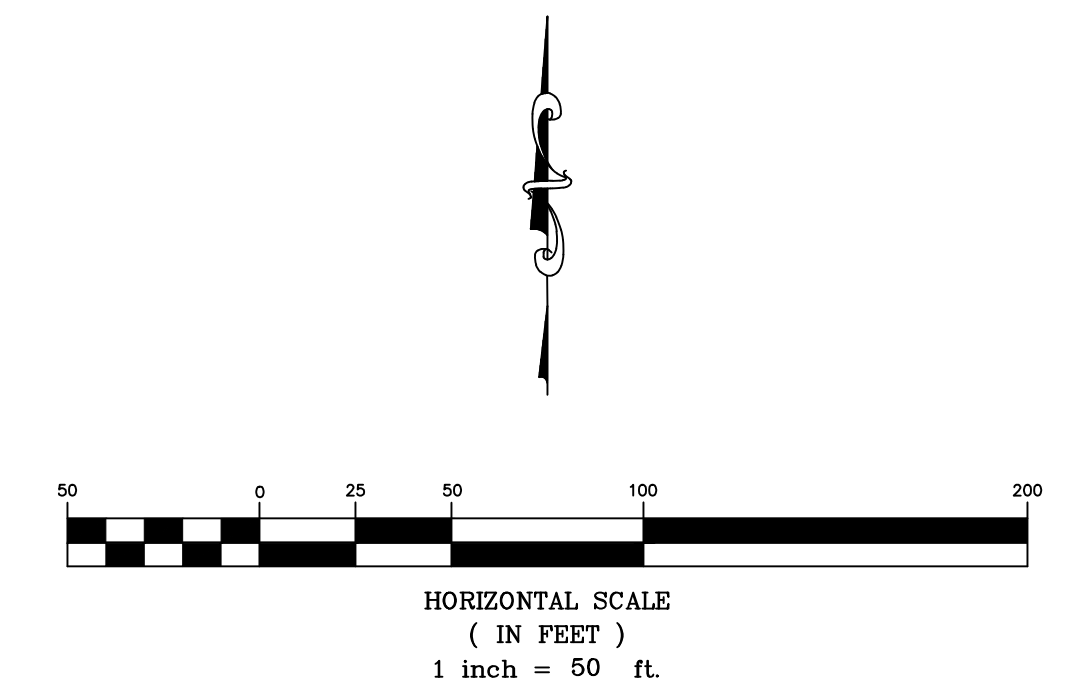
KEMILLER
ENGINEERING PA
117 E. Lewis, Wichita, KS 67202 (316)264-0242



Point #	Northing	Easting	Desc.
1	1688028.06	1689542.26	1/2" Re-Bar
2	1688356.90	1689481.83	1/2" Re-Bar
3	1688358.10	1689551.96	3/4" IP
4	1688438.11	1689550.73	3/4" IP
5	1688030.62	1689940.79	Sta 0+00.00 Line 1
6	1688049.33	1689917.72	Sta 0+29.71 Line 1
7	1688044.56	1684632.01	Sta 3+15.46 Line 1



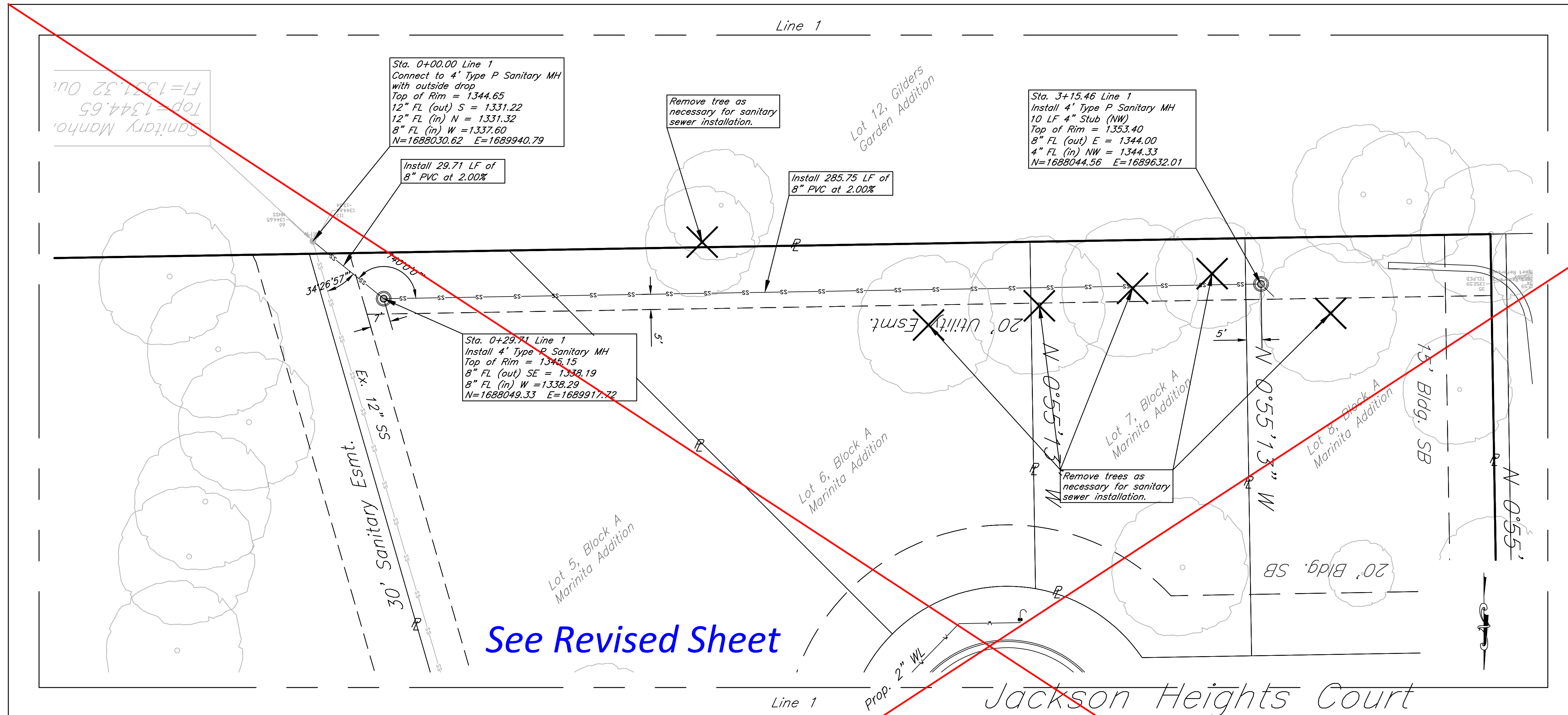
DATE: 1.6.2016
 THIS SHEET HAS BEEN
 SIGNED, SEALED AND
 DATED ELECTRONICALLY



Lots 1-8, Block A, Marinita Addition
Control Map/Plan Sheet
 Wichita, Kansas

	PROJECT NUMBER 468-85065			SHEET 2
	KEM NO. 15126	FILE	DATE 08/2015	
	DESIGN KM	DRAWN MP	REVISED	

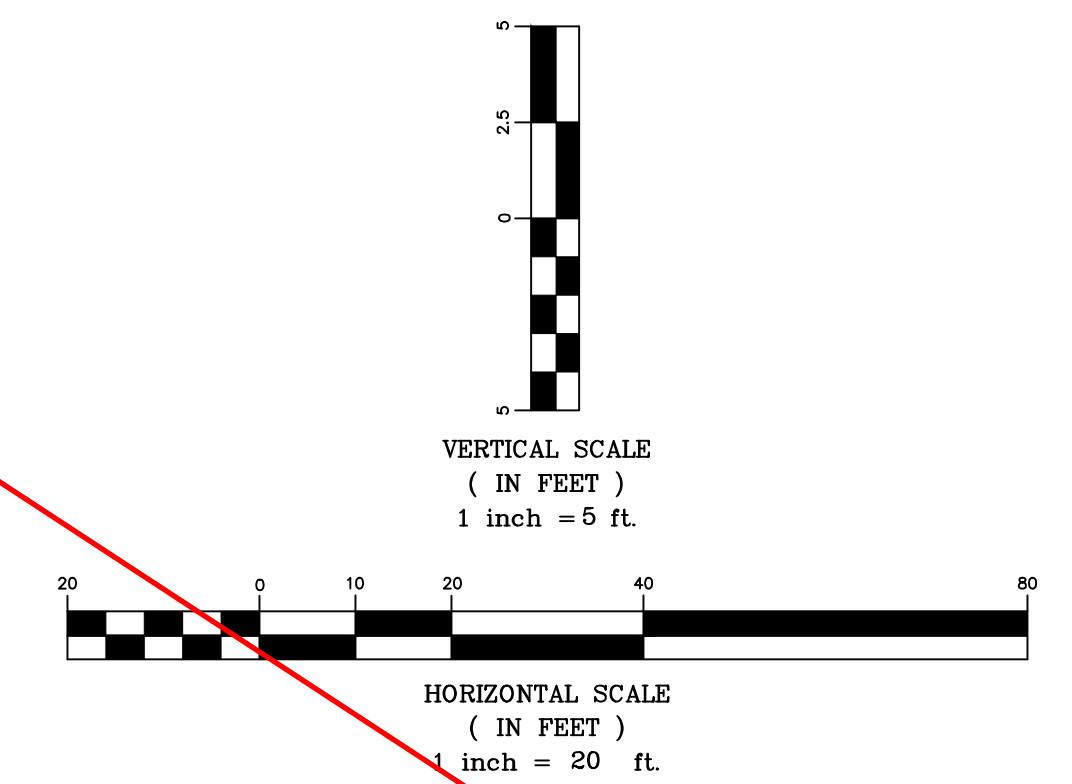
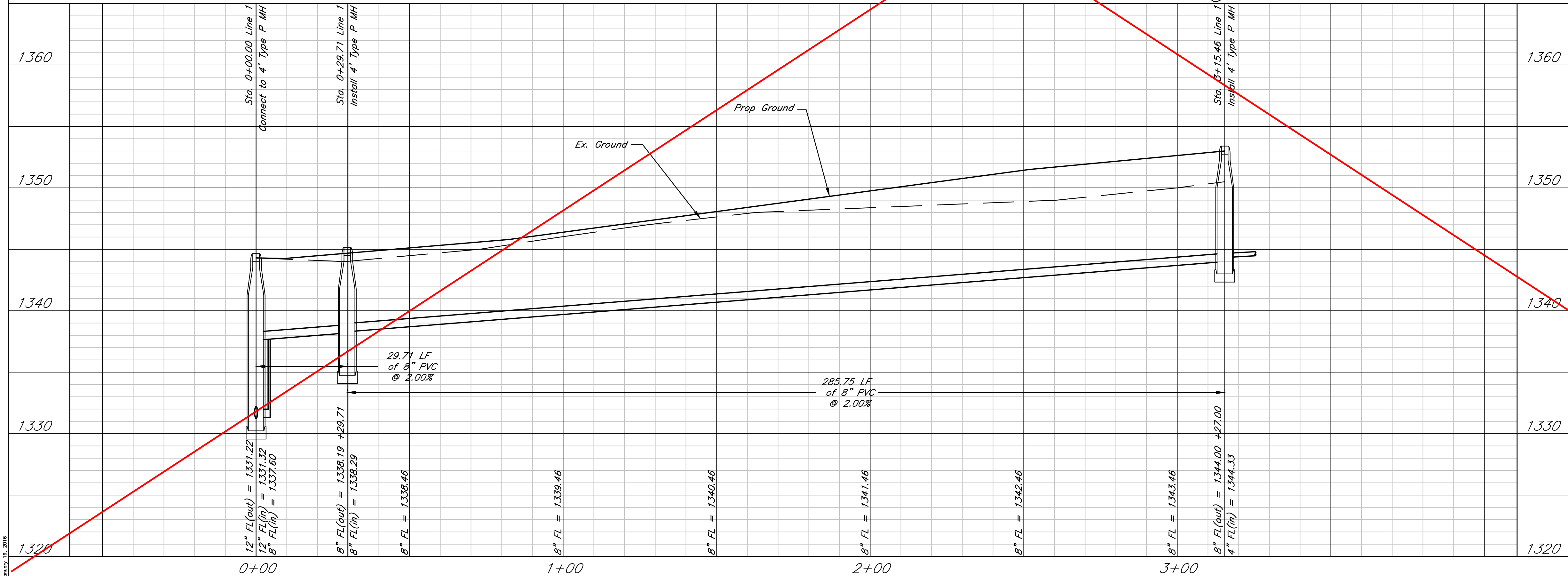
January 18, 2016



See Revised Sheet

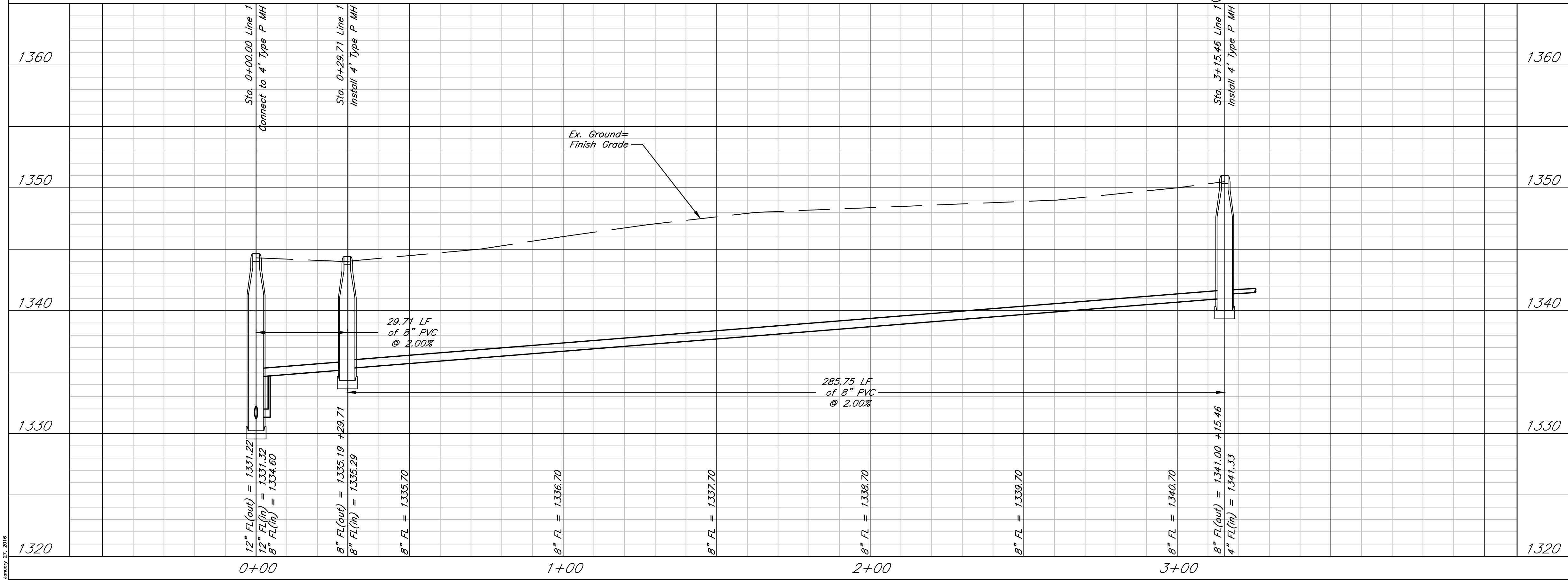
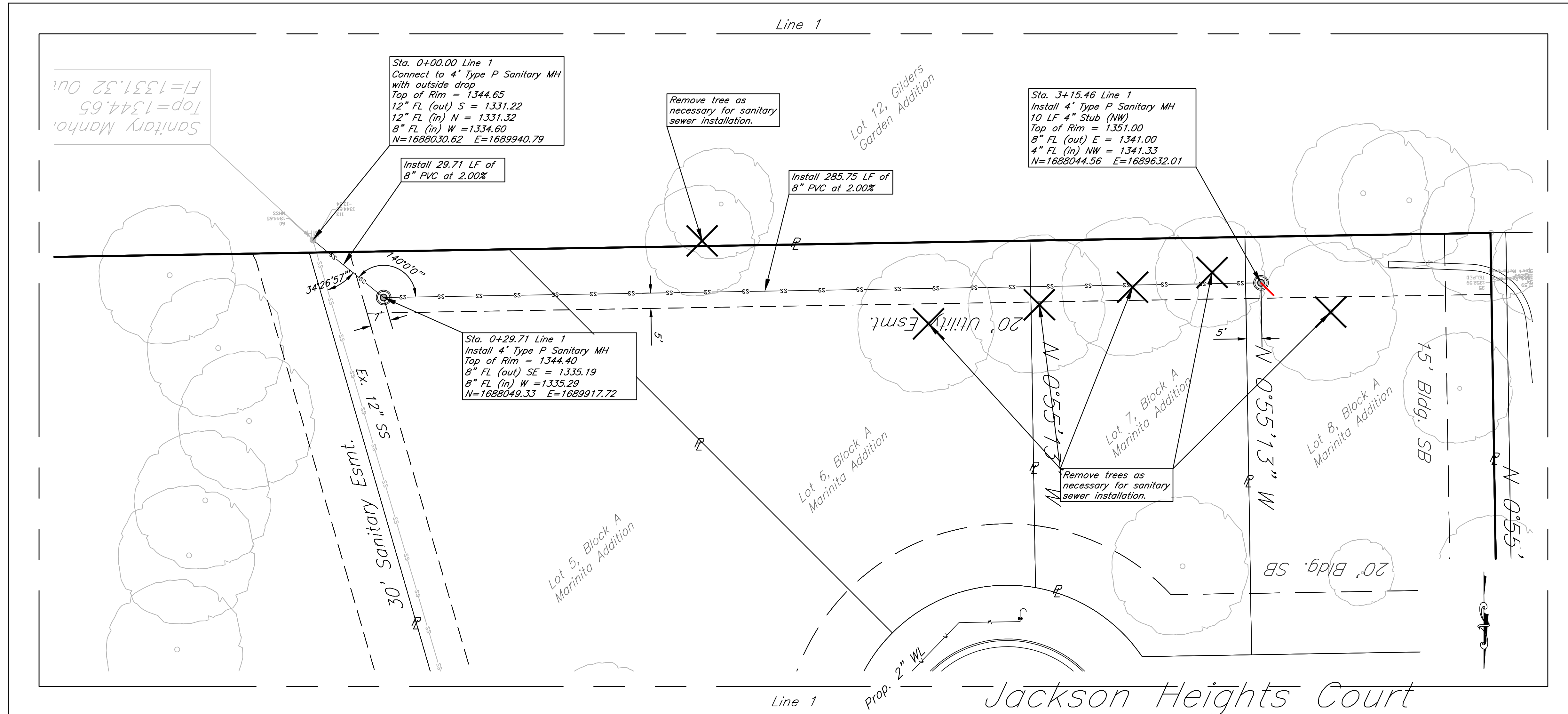


DATE: 11.3.2016
 THIS SHEET HAS BEEN
 SIGNED, SEALED AND
 DATED ELECTRONICALLY

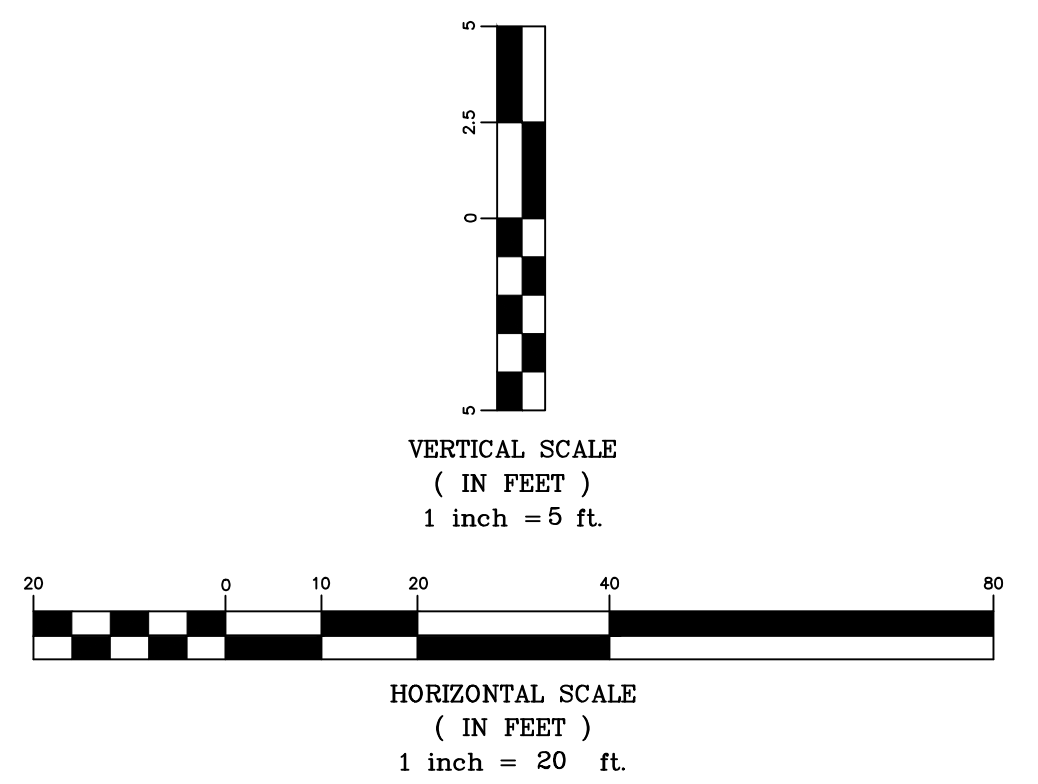


Lots 1-8, Block A, Marinita Addition
 Line 1
 Wichita, Kansas

 117 E. Lewis, Wichita, KS 67202 (316)264-0242	PROJECT NUMBER 468-85065		SHEET 3
	KEM NO. 15128	FILE	
DESIGN KM	DRAWN MP	REVISED	



DATE: 11.3.2016
THIS SHEET HAS BEEN
SIGNED, SEALED AND
DATED ELECTRONICALLY



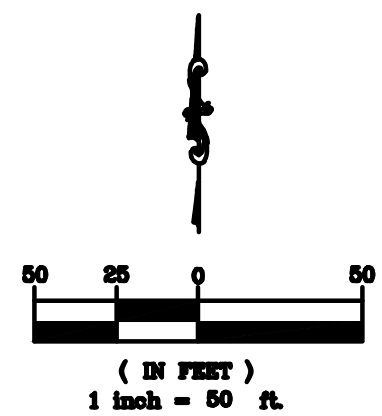
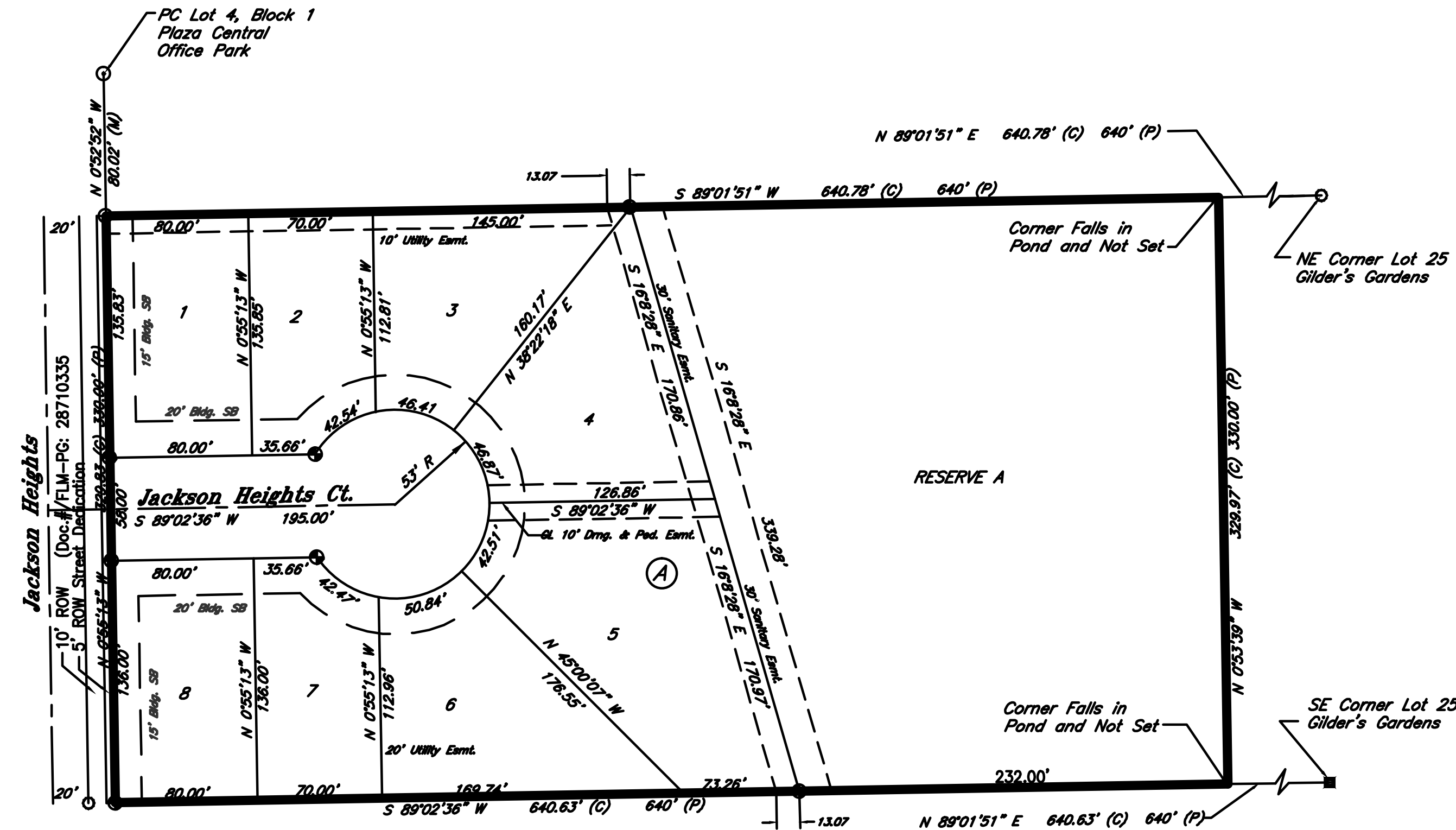
Lots 1-8, Block A, Marinita Addition
Line 1
Wichita, Kansas

	PROJECT NUMBER 468-85065			SHEET 3
	KEM NO. 15128	FILE	DATE 08/2015	
DESIGN KM	DRAWN MP	REVISED		

January 27, 2016

Marinita Addition Replat of Lot 10 Gilder's Gardens Sedgwick County, Kansas

Part of the NE 1/4, Section 22, Township 27 South, Range 2 East of the 6th. P.M.



- PLAT LEGEND**
- 1/2" Rebar (found) Savoy
 - 1/2" Rebar (found) Baughman
 - 1/2" Rebar (found) MKEC
 - 3/4" Iron Pipe (found)
 - 1/2" Rebar
 - 5/8" Rebar (set) KEMPA CLS #157

Benchmark
North 17th of manhole located approximately 15' north and 44 feet west of the northwest corner of subject property.
Elevation=1354.38 NAVD 88

Minimum Pad Elevations
Lots 1 - 8 shall be at a pad elevation of 1345.50
Base Flood Elevation is 1343.50 (NAVD 88)

State of Kansas }
County of Sedgwick } SS

I, Bradley C. Ward, a licensed land surveyor of the State of Kansas, do hereby certify that the following described tract of land was surveyed on the 20th day of May, 2015 and the accompanying final plat prepared and that all the monuments shown herein actually exist and their positions are correctly shown to the best of my knowledge and belief.

LEGAL DESCRIPTION

A tract of land generally located in the Northeast 1/4 of the Section 22, Township 27 South, Range 2 East, of the Sixth Principal Meridian, Sedgwick County, Kansas being more particularly described as:
A replat of Lot 10, Gilder's Gardens, Sedgwick County, Kansas.

All easements and rights-of-way within said tract are hereby vacated by virtue of KSA 12-512b as amended.

Bradley C. Ward, L.S. #920

State of Kansas }
County of Sedgwick } SS

Know all men by these presents, that we, the undersigned, have caused the land described in the surveyor's certificate to be platted into Lots, Block, Street and Reserve to be known as Marinita Addition, Wichita, Sedgwick County, Kansas. Any street dedications shown are hereby granted as indicated for constructing, maintaining, operating, and repairing public utilities. The 20' Drainage & Pedestrian easement shown shall include the construction of a sidewalk and dedicated to and for the use of the public. The access controls are hereby granted to the appropriate governing body as shown hereon. Reserve A is platted for stormwater detention, landscaping, irrigation and beautification. Reserve A shall be owned and maintained by the owners of Lots 1-8, Block A, Marinita Addition. A drainage plan has been developed for the plat and that all drainage easements, rights-of-way, or reserves shall remain at established grades or as modified with the approval of the applicable City or County Engineer, and unobstructed to allow for the conveyance of stormwater. FEMA floodplain and regulatory floodway boundaries are subject to periodic change and such change may affect the intended land use within the subdivision. And further that the land contained herein is held and shall be conveyed subject to any applicable restrictions, reservations and covenants now on file or hereafter filed in the Office of the Register of Deeds of Sedgwick County, Kansas.

By: John Greenstreet, Manager
Marinita, LLC Date

State of Kansas }
County of Sedgwick } SS

This instrument was acknowledged before me on this _____ day of _____, 2015, by John Greenstreet, Manager, Marinita, LLC

Notary Public
My Commission Expires: _____

State of Kansas }
City of Wichita } SS

This plat of Marinita Addition, Wichita, Sedgwick County, Kansas, has been submitted to and approved by the Wichita-Sedgwick County Metropolitan Area Planning Commission, Wichita, Kansas. Dated this _____ day of _____, 2015.
Wichita-Sedgwick County Metropolitan Area Planning Commission.

Matthew J. Goolsby, Chair

John L. Schlegel, Secretary

State of Kansas }
City of Wichita } SS

This plat approved and all dedications shown hereon accepted by the City Council of the City of Wichita, Kansas, this _____ day of _____, 2015.

At the Direction of the City Council

Jeff Longwall, Mayor

Karen Sublett, City Clerk

Entered on transfer record this _____ day of _____, 2015.

Kelly B. Arnold, County Clerk

State of Kansas }
County of Sedgwick } SS

This is to certify that this plat has been filed for record in the Office of the Register of Deeds this _____ day of _____, 2015, at _____ o'clock _____ AM and is duly recorded.

Bill Meek, Register of Deeds

Tonya Buckingham, Deputy

Reviewed in accordance with K.S.A. 58-2005 on this _____ day of _____, 2015.

Tricia L. Robello, L.S. #1246
Deputy County Surveyor
Sedgwick County, Kansas

