

GENERAL NOTES:

1. Contractor will be required to provide notice to utility companies a minimum of forty-eight (48) hours prior to any excavation, as follows:

Kansas One-Call 687-2470

The Contractor must notify the following in case of an emergency:

- Cox Communications 262-4270
- Kansas Gas Service 1-888-482-4950
- Westar Energy 383-8650
- Aquila Energy 1-800-303-0357
- AT&T 268-2245
- City of Wichita Water Dept. 268-4563
- City of Wichita Sewer Maint. 268-4024
- City of Wichita Storm Sewer Maint. 268-4090
- City of Wichita Traffic Maint. 268-4034
- Conoco Phillips Pipeline Co. 1-877-267-2290
- Southern Star Pipeline Co. 529-6600
- Kinder-Morgan Pipeline Co. 1-888-844-5658

2. Utility service lines, poles, valve boxes, meters, and etcetera are to be adjusted as necessary by others prior to construction unless the plans specifically call for their adjustment by the Contractor or unless the plans specifically identify a utility to be adjusted by its owner during construction. Existing utilities and their location, as shown on the plans, represent the best information obtainable for design. The Contractor will be required to work around existing utilities within the right-of-way which do not conflict with proposed construction.

3. Rubble from the removal of miscellaneous structures and excess excavation which is to be wasted shall be disposed of on sites to be provided by the Contractor. These sites shall be approved by the Engineer as to suitability, appearance and site location. Locations, in the opinion of the Engineer, that will leave an unsightly appearance will not be approved. All disposal sites must be approved by the Kansas Department of Health and Environment. Material either stockpiled or disposed of in a flood plain would require a Kansas State Board of Agriculture permit. Any material dumped in waters of the United States or wetlands is subject to U.S. Corps of Engineers permitting regulations. Any material buried or stockpiled beyond approved construction limits would require additional archaeological investigations unless buried in a previously approved borrow location.

4. Trees and shrubs in public right-of-way which are in direct conflict with proposed new construction shall be removed by the Contractor with the Engineer's approval. Trees and shrubs which are not in direct conflict with proposed new construction shall be saved and protected from damage.

5. The Contractor shall give all property owners and/or tenants of developed property abutting the construction of this project a minimum of ten (10) days notice prior to start of construction.

6. The Contractor shall be responsible for preserving property irons. The Contractor will be required to re-establish any property irons which are damaged or destroyed by his construction operations. Such irons shall be re-established by a licensed land surveyor in accordance with state laws.

7. All existing and proposed erosion control measures including silt fencing, erosion control mat, straw bales, inlet barriers, and const. entrance shall be maintained throughout construction by the contractor and until project is accepted by the City of Wichita. The on-site engineer shall complete weekly reports on the status of erosion control measures. The contractor shall be required to comply with maintenance and/or replacement of erosion control measures as determined by the on-site engineer until project is accepted by City of Wichita. Maintenance and/or replacement of erosion control measures to be paid by L.S. bid item "Maintain Existing BMP's."

8. All excess excavation shall remain on-site and shall be stockpiled or spread at a location determined by the engineer.

9. The Contractor shall be responsible for maintaining continuous flow of sewage through construction. Contractor's proposed method for maintaining sewage flow shall be approved by the Engineer. Cost of maintaining flow of sewage through construction will not be paid for directly and this cost shall be considered as subsidiary to the other pay items of work.

10. All areas disturbed during construction shall be seeded as follows (Temporary Seeding):

Seed: Rye grass (PLS)--5 lbs./1000 Sq. Ft.

All costs associated with seeding shall be included in bid item "Seeding". All seeding operations shall conform to City of Wichita Standard Specifications.

11. The Developer for this project is Jay Russell (316) 722-2417.

Lateral 2, Main 1, Boeing Sanitary Sewer SANITARY SEWER IMPROVEMENTS

to serve

VASSAR ADDITION CITY OF WICHITA, KANSAS

Gary Janzen, P.E. City Engineer

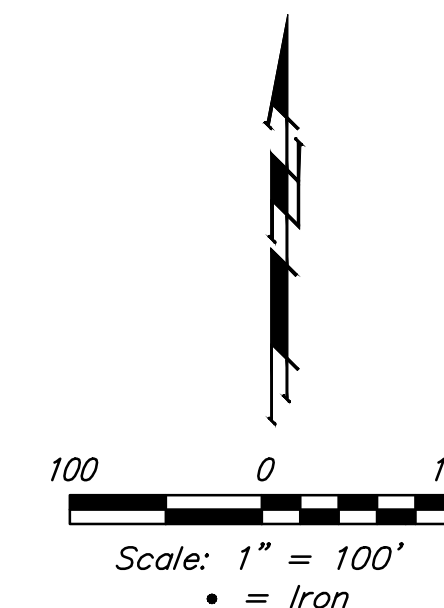
Project Number

468 - 85090

OCA Number

744413

Nowak Construction - Contractor
J. Wagner - City of Wichita, Field Project Engineer
Z. Regnier - City of Wichita, Inspector
Stubs & Risers
As-built
Release Date: 06/25/2016
pdf: 07/22/2016 apr



BENCHMARKS

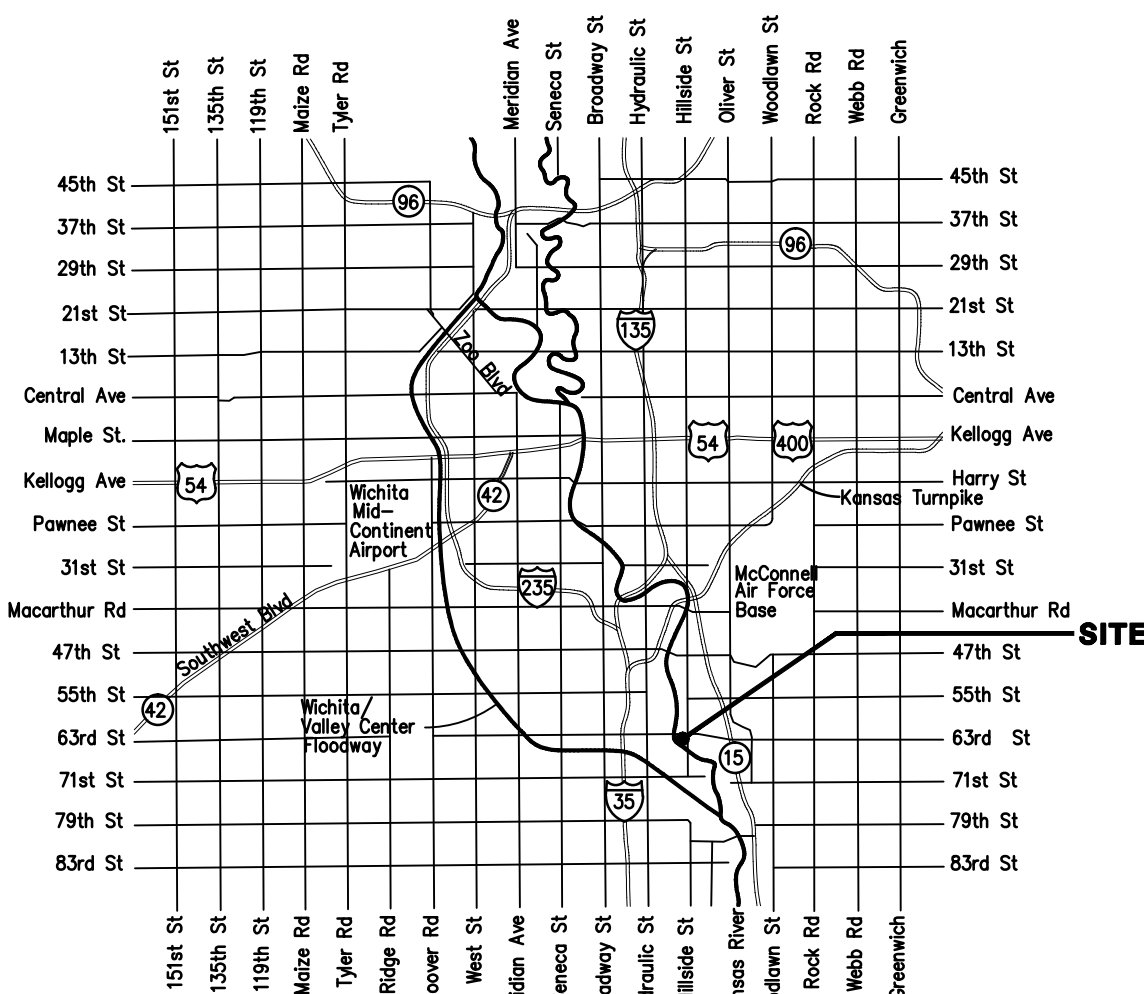
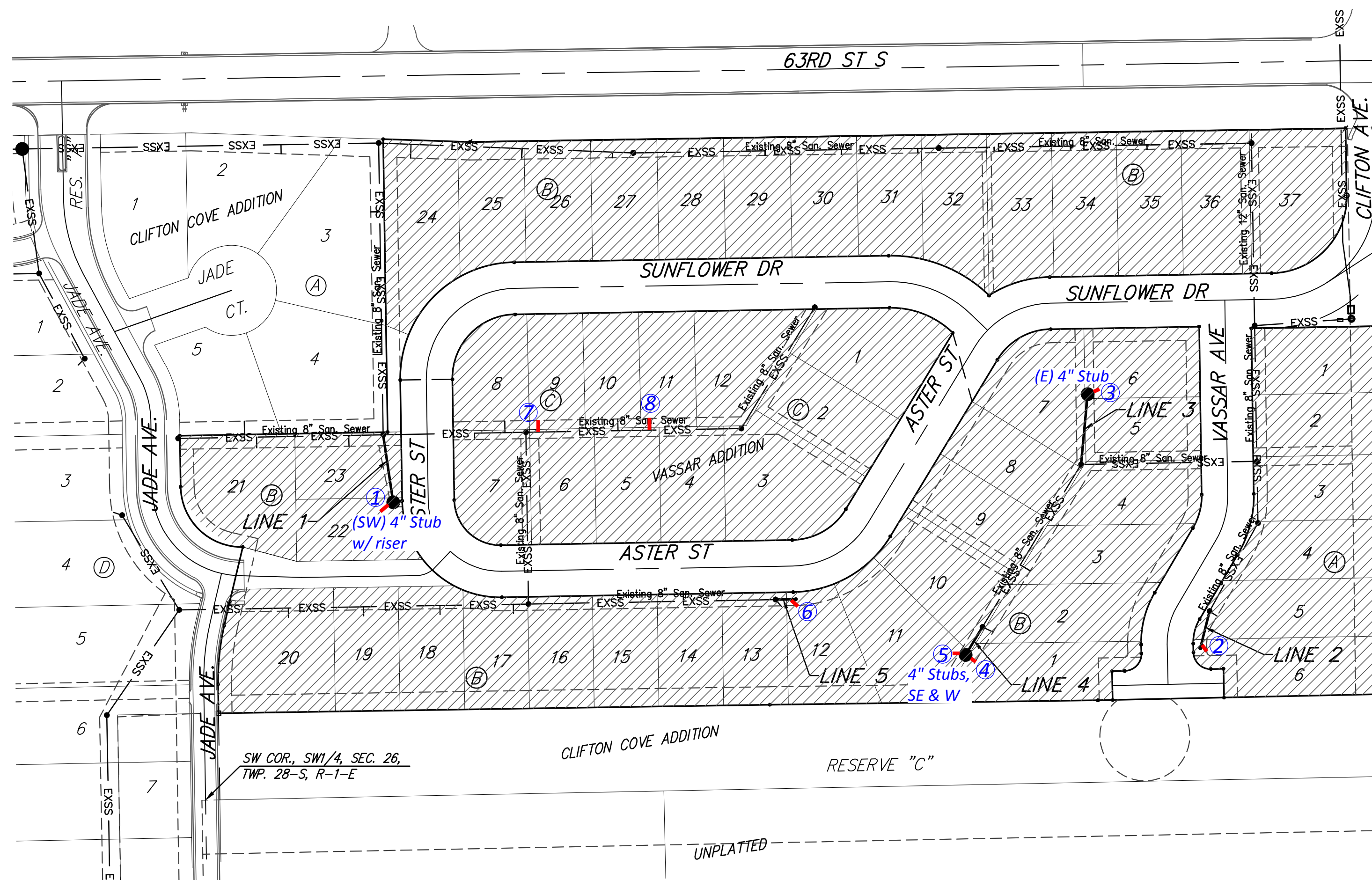
Chiseled square on top of catch basin, 43.5' N. & 20.4' W. of the northwest corner of Lot 24, Block B, Vassar Addition.
Elev. = 1259.55 NGVD29

Chiseled cross on top of catch basin, 48.2' N. & 41.2' W. of the northeast corner of Lot 37, Block B, Vassar Addition.
Elev. = 1258.46 NGVD29

Chiseled cross on walk, most easterly corner, (block corner), Lot 4, Block D, Clifton Cove Addition, 35.2' W. & 8.5' S. of the northwest corner, Lot 20, Block B, Vassar Addition.
Elev. = 1258.62 NGVD29

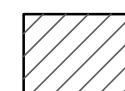
SHEET INDEX

Title Sheet	1
Line 1 & Line 2	2
Line 3, Line 4, & Line 5	3
Risers on Existing San. Sewer	4
Erosion Control Plan	5
Erosion Control BMP Details	6-10
Standard Manhole Detail	11
Ring & Cover Detail	12
Vertical Riser Detail	13
Cleanout Riser Detail	14
Coordinate Sheet	15
Copy of Plat	16



Vicinity Map

BENEFIT DISTRICT



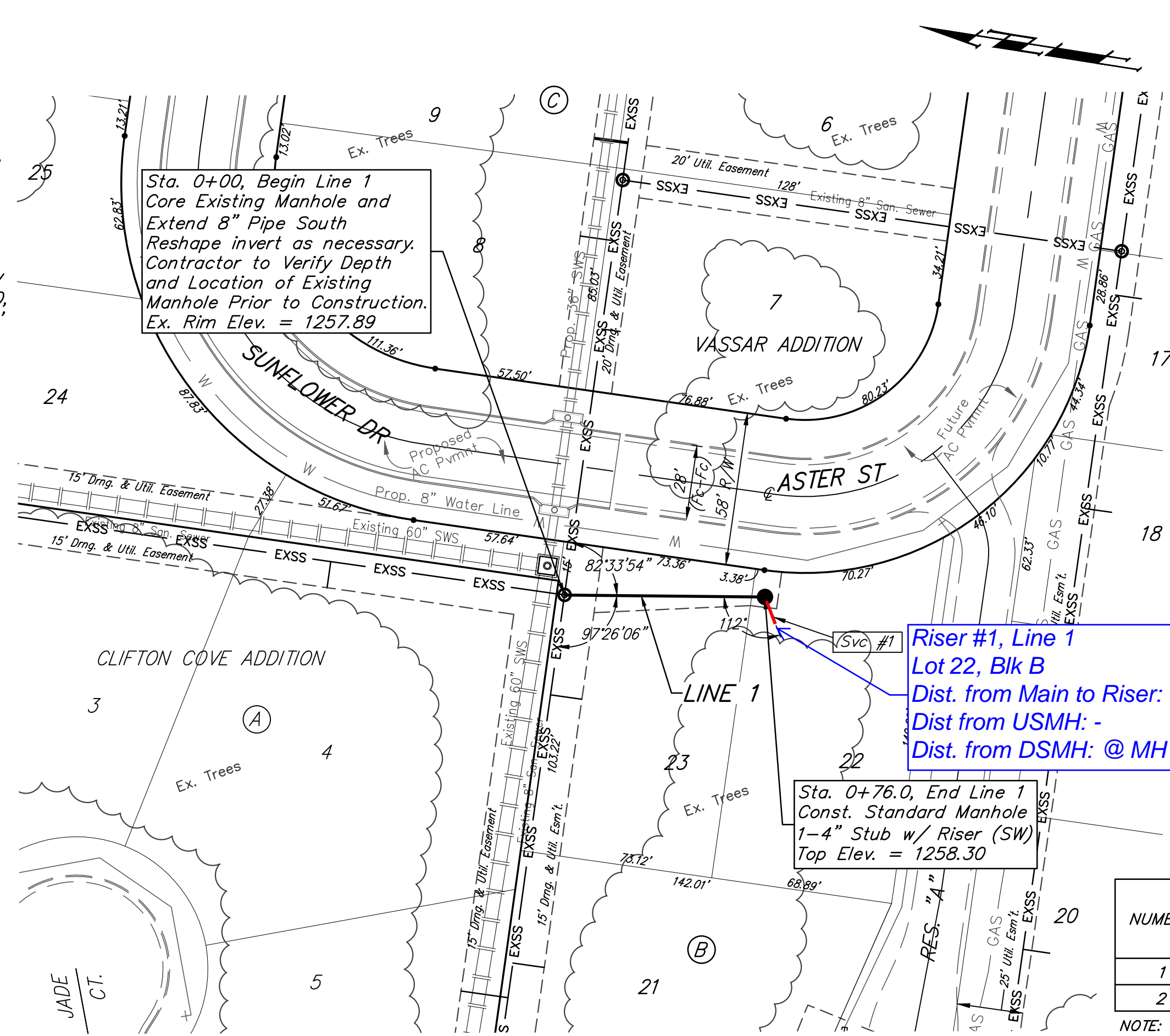
Baughman Company, P.A. 315 Ellis St. Wichita, KS 67211 P 316-262-7271 F 316-262-0149
ENGINEERING | SURVEYING | PLANNING | LANDSCAPE ARCHITECTURE



BENCHMARKS:
 Chiseled square on top of catch basin, 43.5' N. & 20.4' W. of the northwest corner of Lot 24, Block B, Vassar Addition.
 Elev. = 1259.55 NGVD29

Chiseled cross on top of catch basin, 48.2' N. & 41.2' W. of the northeast corner of Lot 37, Block B, Vassar Addition.
 Elev. = 1258.46 NGVD29

Chiseled cross on walk, most easterly corner, (block corner), Lot 4, Block D, Clifton Cove Addition, 35.2' W. & 8.5' S. of the northwest corner, Lot 20, Block B, Vassar Addition.
 Elev. = 1258.62 NGVD29



Sta. 0+00, Begin Line 1
 Core Existing Manhole and
 Extend 8" Pipe South
 Reshape invert as necessary.
 Contractor to Verify Depth
 and Location of Existing
 Manhole Prior to Construction.
 Ex. Rim Elev. = 1257.89

Riser #1, Line 1
 Lot 22, Blk B
 Dist. from Main to Riser: 10' Lt
 Dist from USMH: -
 Dist. from DSMH: @ MH

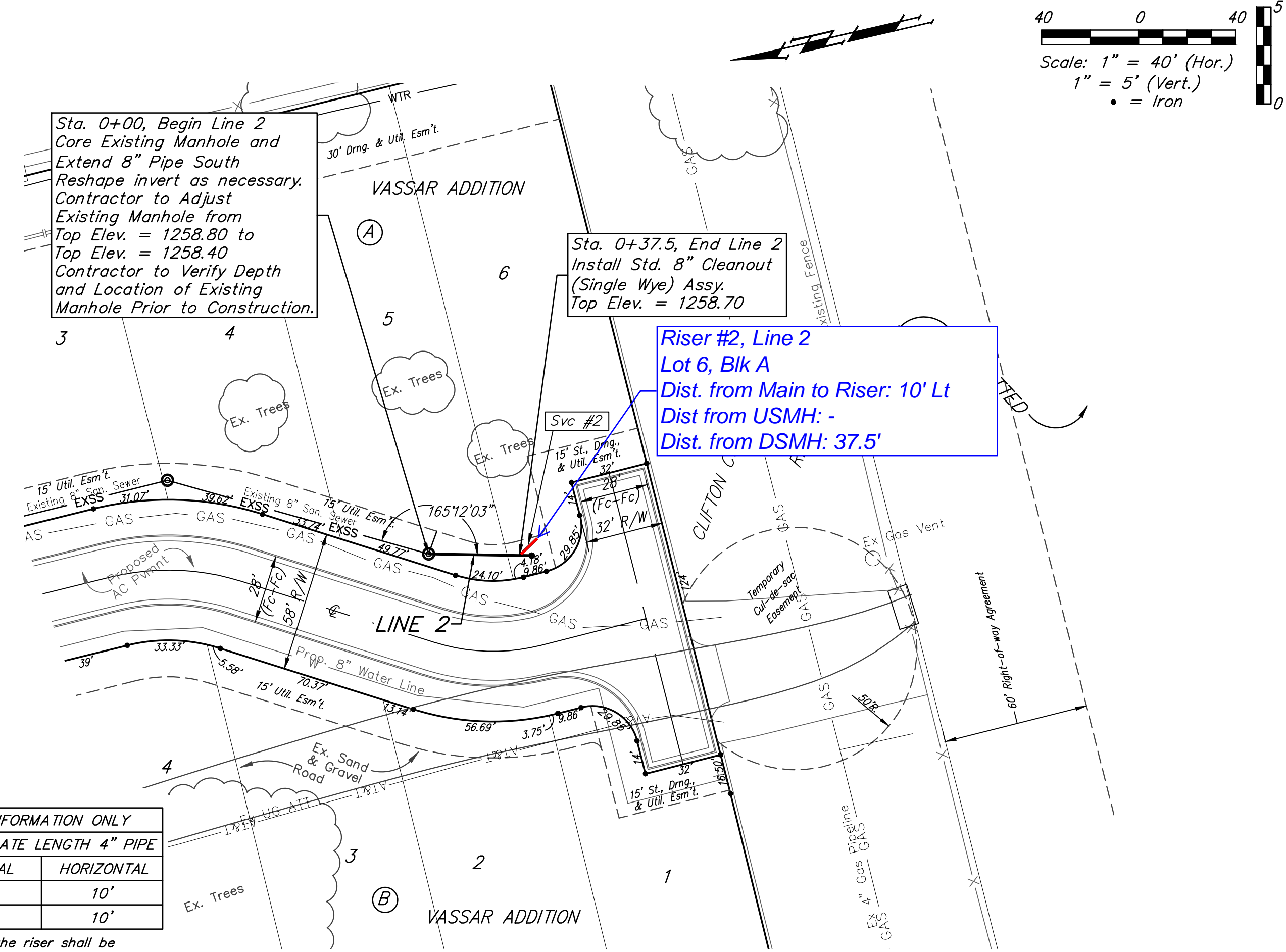
Sta. 0+76.0, End Line 1
 Const. Standard Manhole
 1-4" Stub w/ Riser (SW)
 Top Elev. = 1258.30

The Contractor shall be required to backfill trench with sand from Sta. 0+00 to Sta. 0+76.0, Line 1 and from Sta. 0+00 to Sta. 0+37.5, Line 2 To be bid as L.F. "Fill, Sand (Flushed & Vibrated)"

SEWER SERVICE TABLE

NUMBER	TYPE	LOCATION				FOR INFORMATION ONLY	
		LOT NO.	BLOCK NO.	LINE NO.	STATION/DIRECTION	APPROXIMATE LENGTH 4" PIPE	VERTICAL
1	4" Stub	22	B	1	0+76.0/Rt.	6.5'	10'
2	8" x 4" Wye	6	A	2	0+37.5/Lt.	-	10'

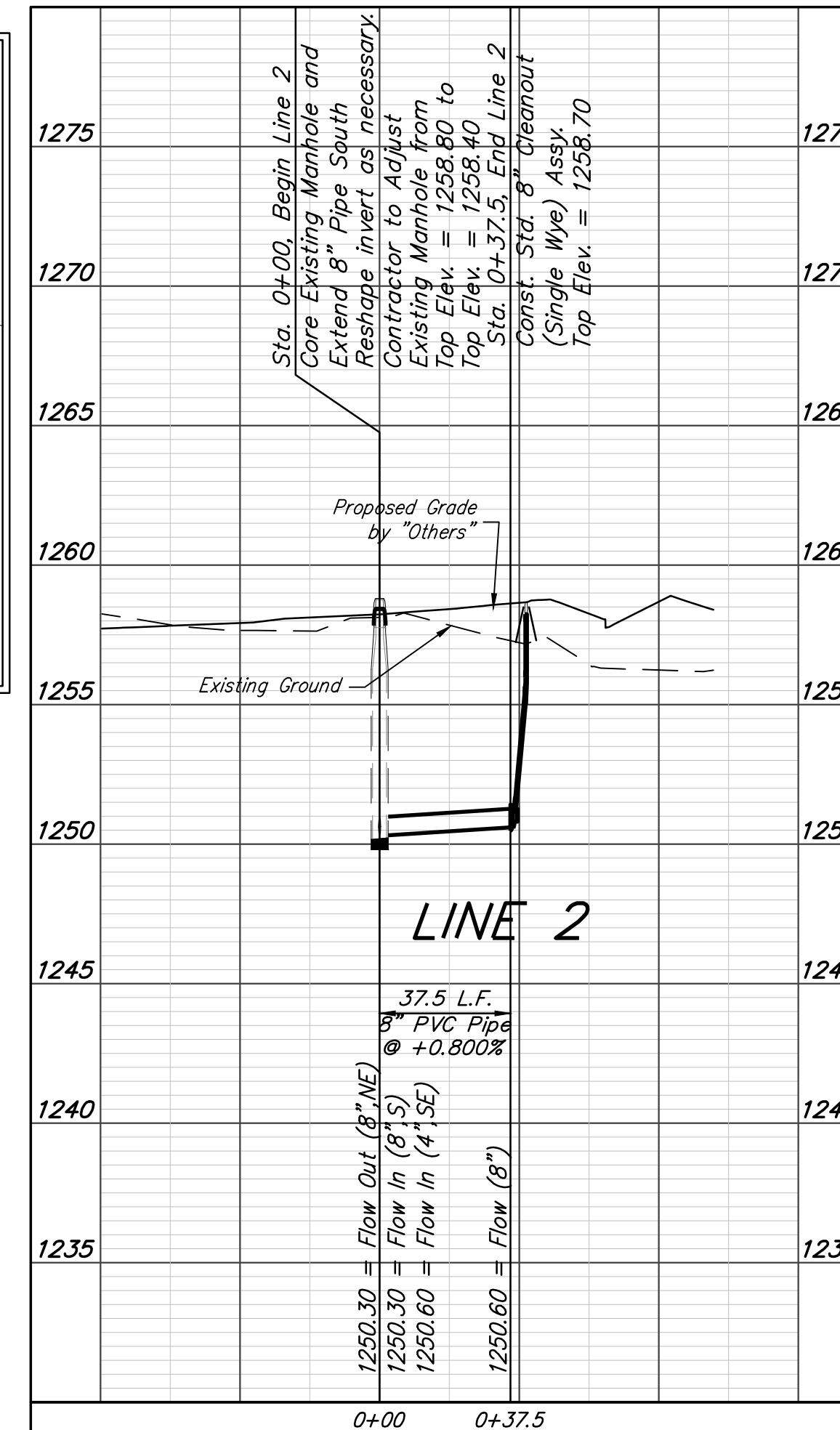
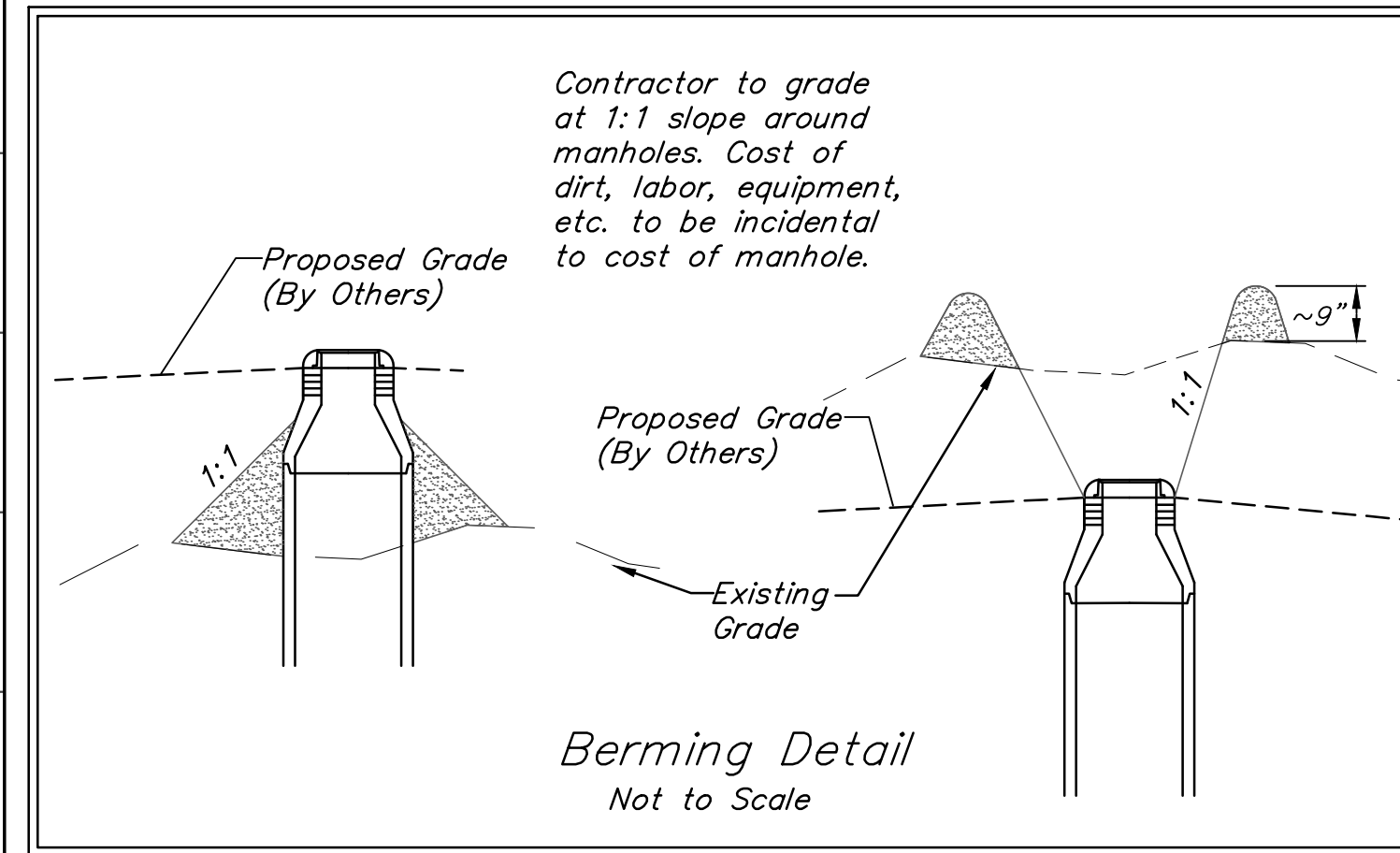
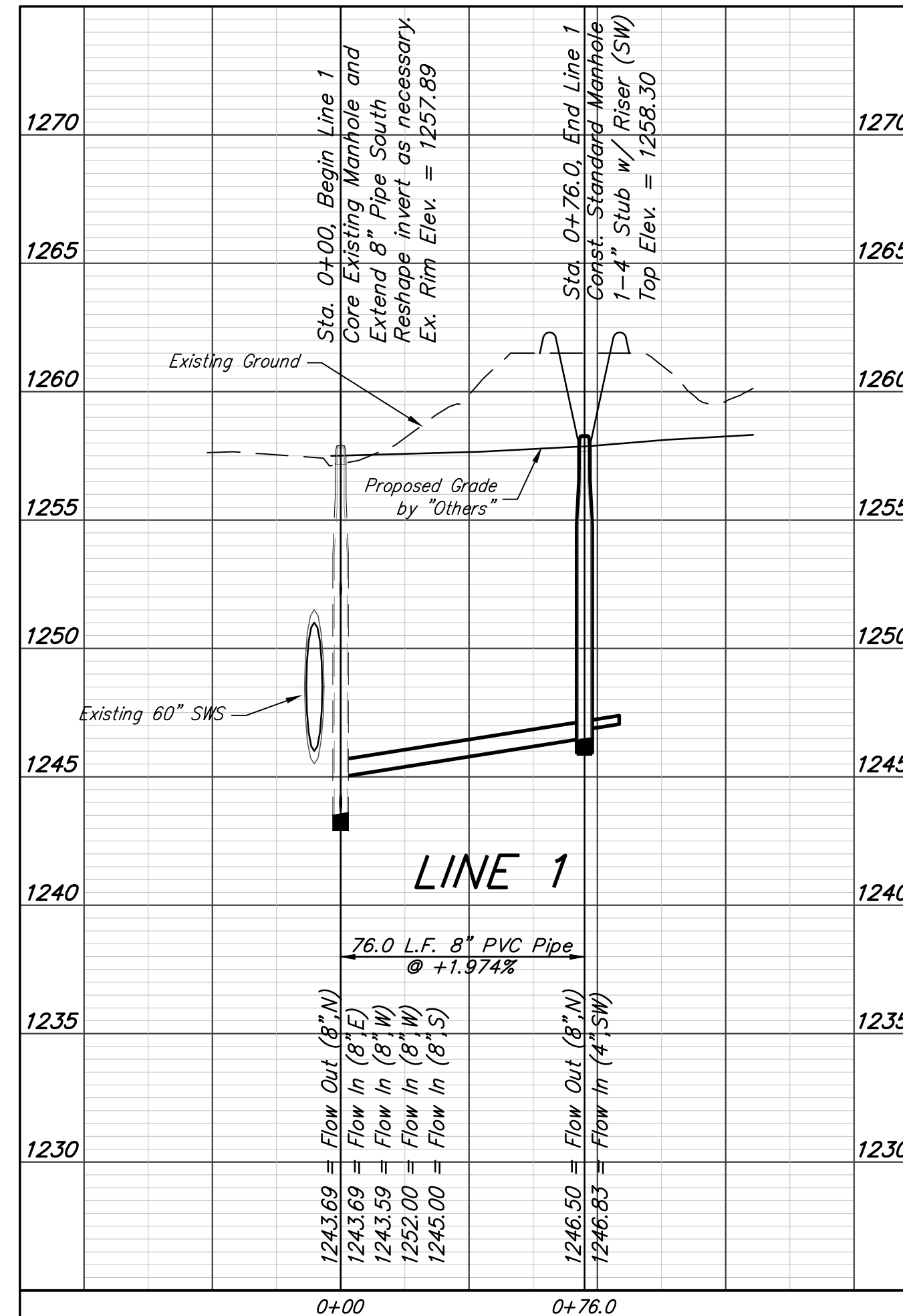
NOTE: If vertical riser pipe length is greater than zero, the vertical portion of the riser shall be extended to 2' minimum above ground water elevation and 4' maximum below proposed ground elevation.



Sta. 0+00, Begin Line 2
 Core Existing Manhole and
 Extend 8" Pipe South
 Reshape invert as necessary.
 Contractor to Adjust
 Existing Manhole from
 Top Elev. = 1258.80 to
 Top Elev. = 1258.40
 Contractor to Verify Depth
 and Location of Existing
 Manhole Prior to Construction.

Sta. 0+37.5, End Line 2
 Install Std. 8" Cleanout
 (Single Wye) Assy.
 Top Elev. = 1258.70

Riser #2, Line 2
 Lot 6, Blk A
 Dist. from Main to Riser: 10' Lt
 Dist from USMH: -
 Dist. from DSMH: 37.5'



Baughman Vassar Addition
LINE 1 & LINE 2
 Sanitary Sewer Improvements

Baughman Company, P.A. 315 Ellis St. Wichita, KS 67211 P 316-262-7271 F 316-262-0149
 ENGINEERING | SURVEYING | PLANNING | LANDSCAPE ARCHITECTURE

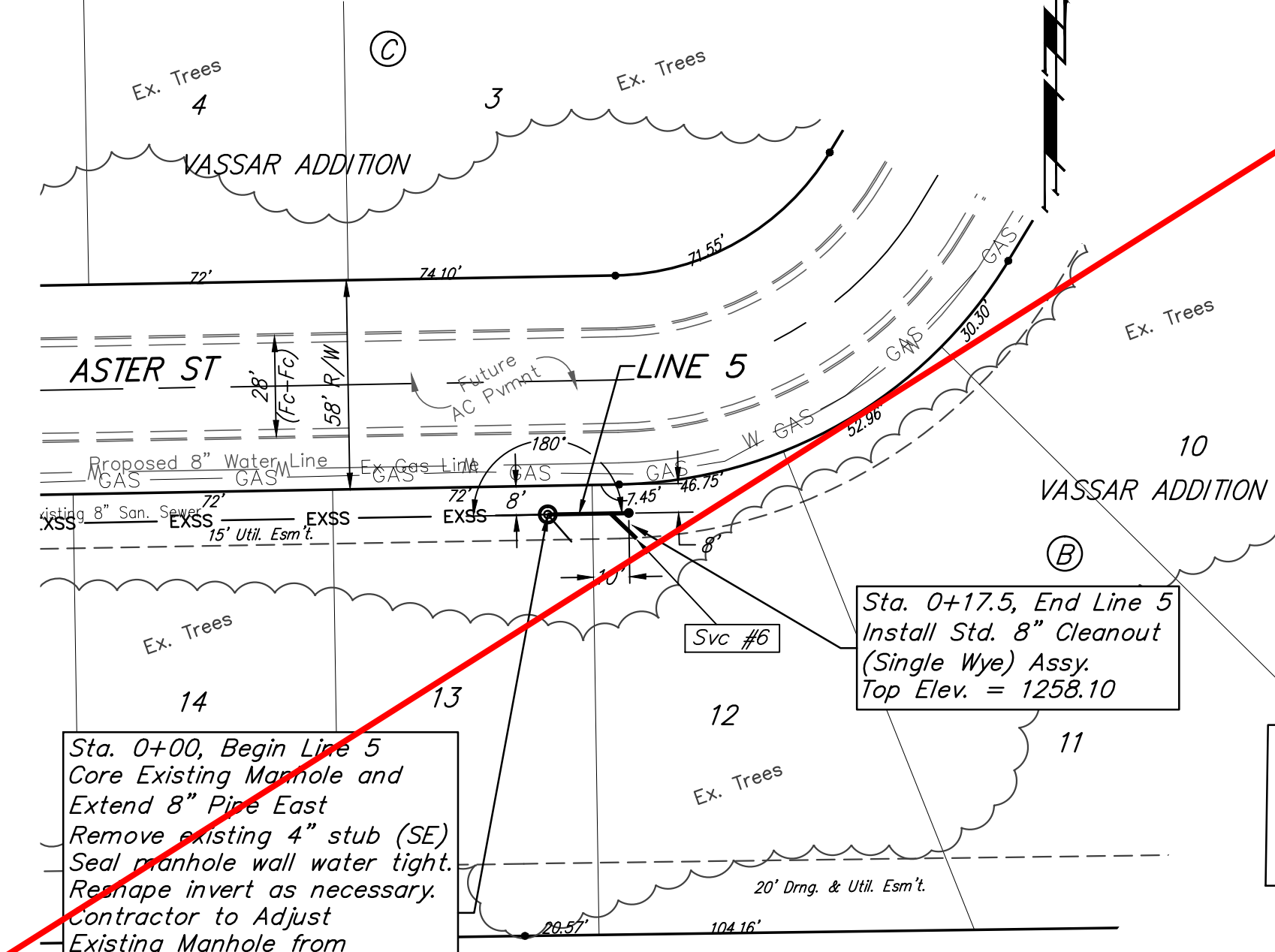
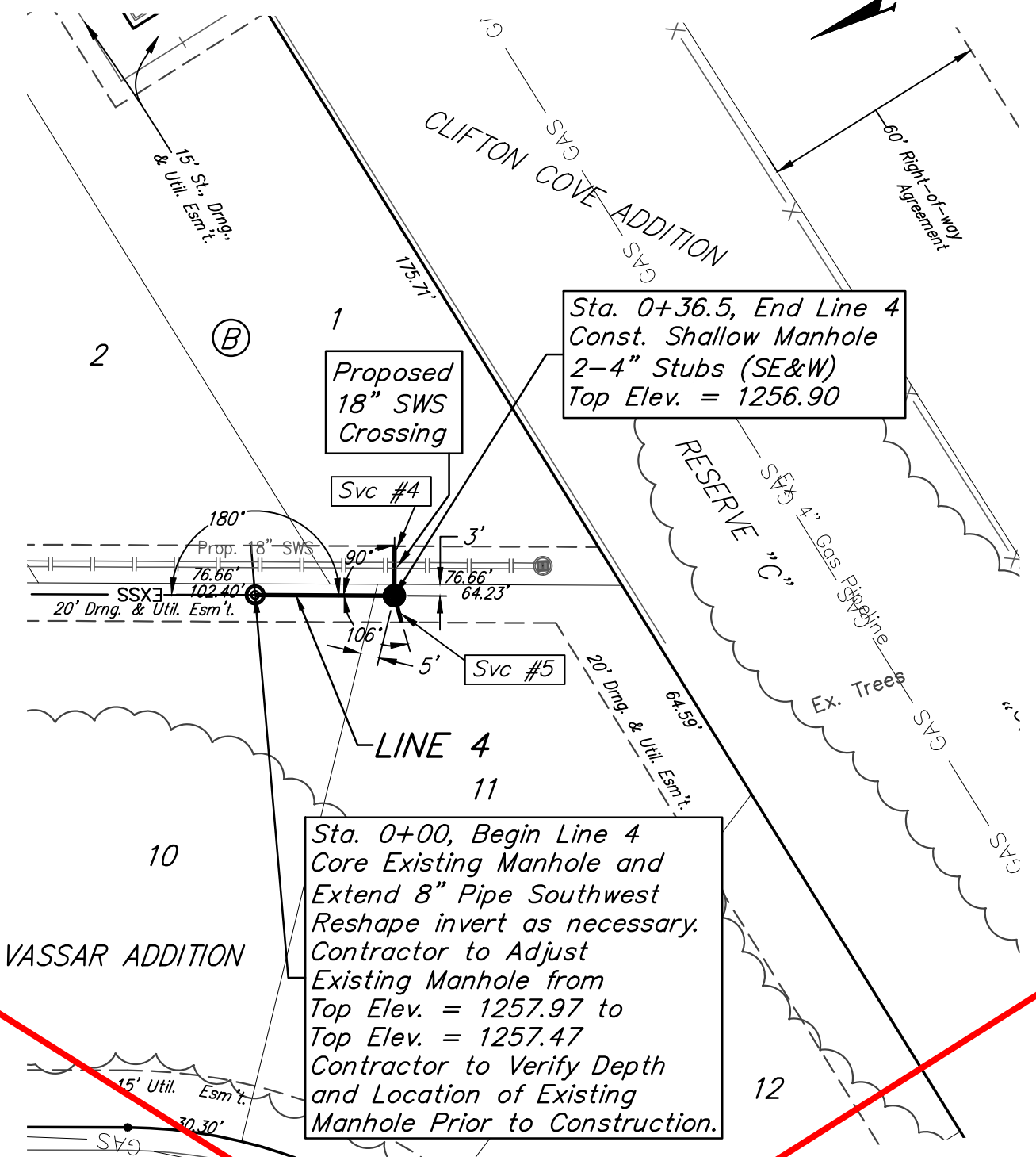
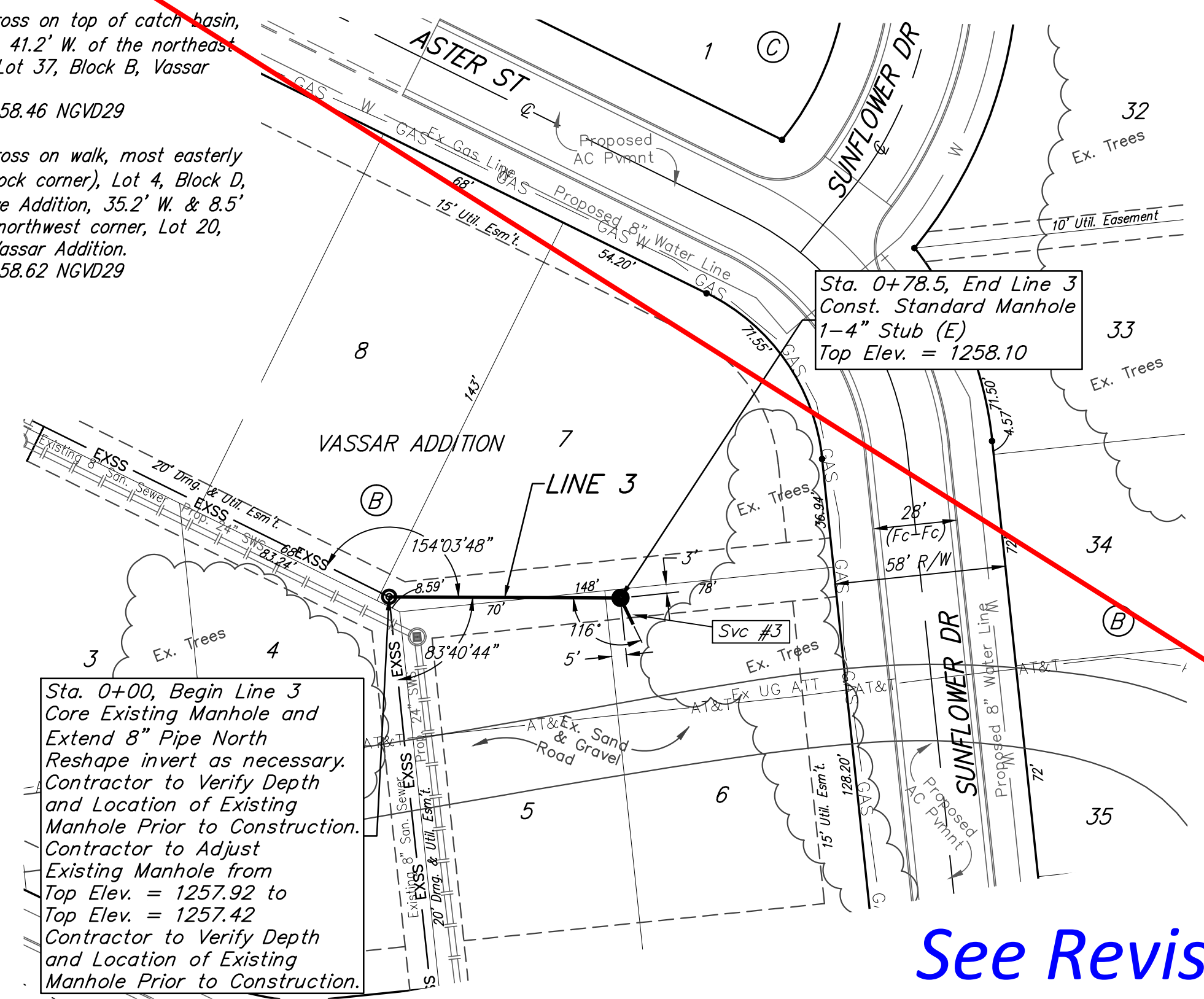
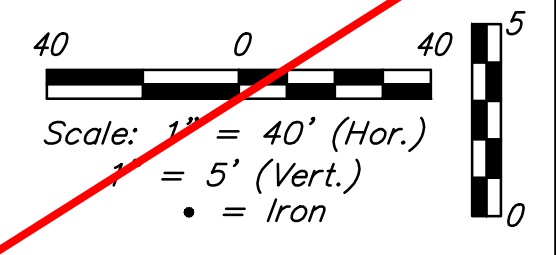
PROJECT NUMBER: 468 DESIGN: AEG DRAWN: JAK
 APPROVED: DATE: 3/29/16
 SCALE: Noted
 SHEET: 2 OF 16

REVISIONS:

BENCHMARKS:
 Chiseled square on top of catch basin, 43.5' N. & 20.4' W. of the northwest corner of Lot 24, Block B, Vassar Addition.
 Elev. = 1259.55 NGVD29

Chiseled cross on top of catch basin, 48.2' N. & 41.2' W. of the northeast corner of Lot 37, Block B, Vassar Addition.
 Elev. = 1258.46 NGVD29

Chiseled cross on walk, most easterly corner, (block corner), Lot 4, Block D, Clifton Cove Addition, 35.2' W. & 8.5' S. of the northwest corner, Lot 20, Block B, Vassar Addition.
 Elev. = 1258.62 NGVD29



Sta. 0+00, Begin Line 3
 Core Existing Manhole and Extend 8" Pipe North
 Reshape invert as necessary.
 Contractor to Verify Depth and Location of Existing Manhole Prior to Construction.
 Contractor to Adjust Existing Manhole from Top Elev. = 1257.92 to Top Elev. = 1257.42
 Contractor to Verify Depth and Location of Existing Manhole Prior to Construction.

Sta. 0+78.5, End Line 3
 Const. Standard Manhole 1-4" Stub (E)
 Top Elev. = 1258.10

Sta. 0+00, Begin Line 4
 Core Existing Manhole and Extend 8" Pipe Southwest
 Reshape invert as necessary.
 Contractor to Adjust Existing Manhole from Top Elev. = 1257.97 to Top Elev. = 1257.47
 Contractor to Verify Depth and Location of Existing Manhole Prior to Construction.

Sta. 0+36.5, End Line 4
 Const. Shallow Manhole 2-4" Stubs (SE&W)
 Top Elev. = 1256.90

Sta. 0+00, Begin Line 5
 Core Existing Manhole and Extend 8" Pipe East
 Remove existing 4" stub (SE)
 Seal manhole wall water tight.
 Reshape invert as necessary.
 Contractor to Adjust Existing Manhole from Top Elev. = 1259.15 to Top Elev. = 1258.65
 Contractor to Verify Depth and Location of Existing Manhole Prior to Construction.

Sta. 0+17.5, End Line 5
 Install Std. 8" Cleanout (Single Wye) Assy.
 Top Elev. = 1258.10

The Contractor shall be required to backfill trench with sand from Sta. 0+00 to Sta. 0+17.5, Line 5 To be bid as L.F. "Fill, Sand (Flushed & Vibrated)"

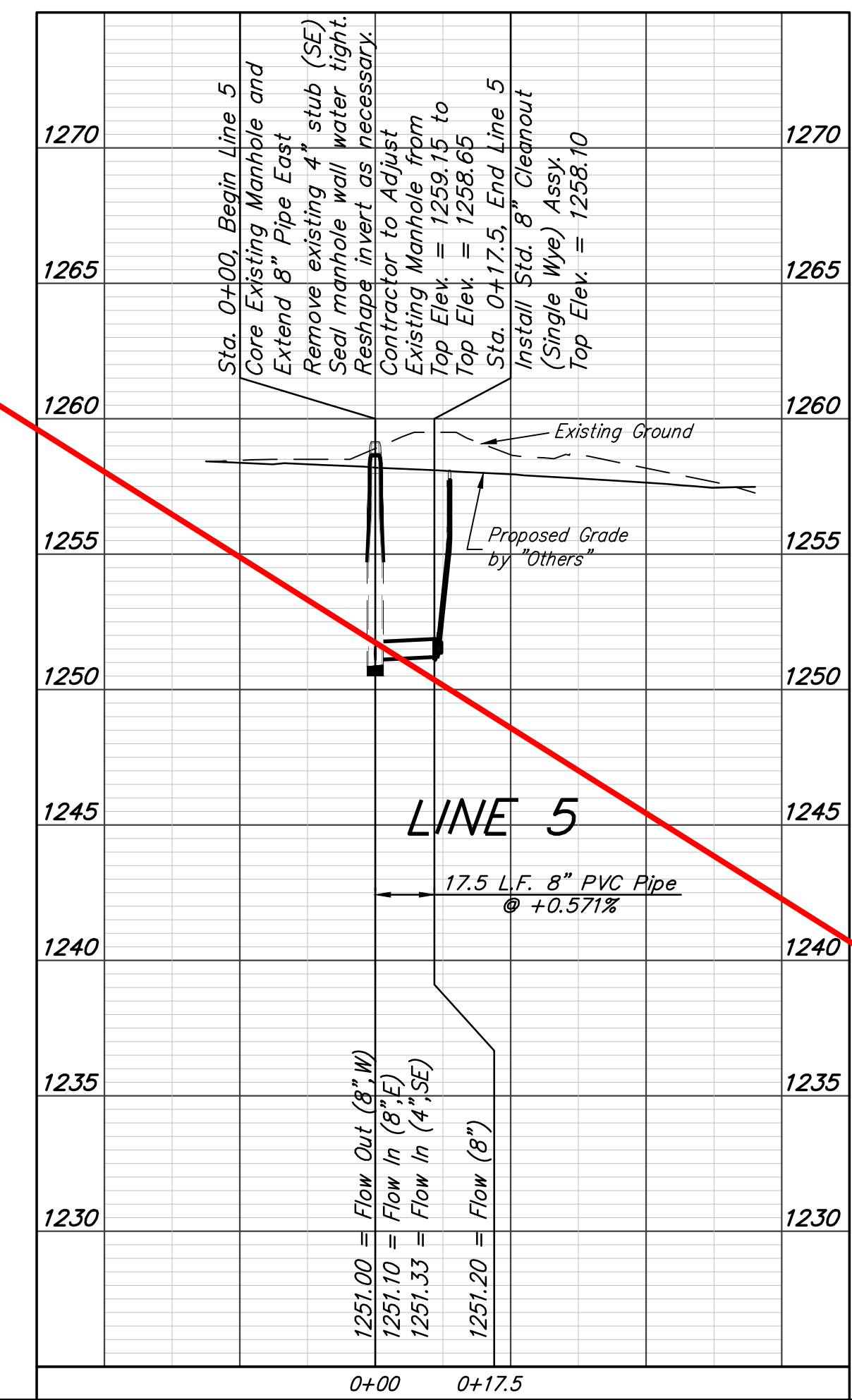
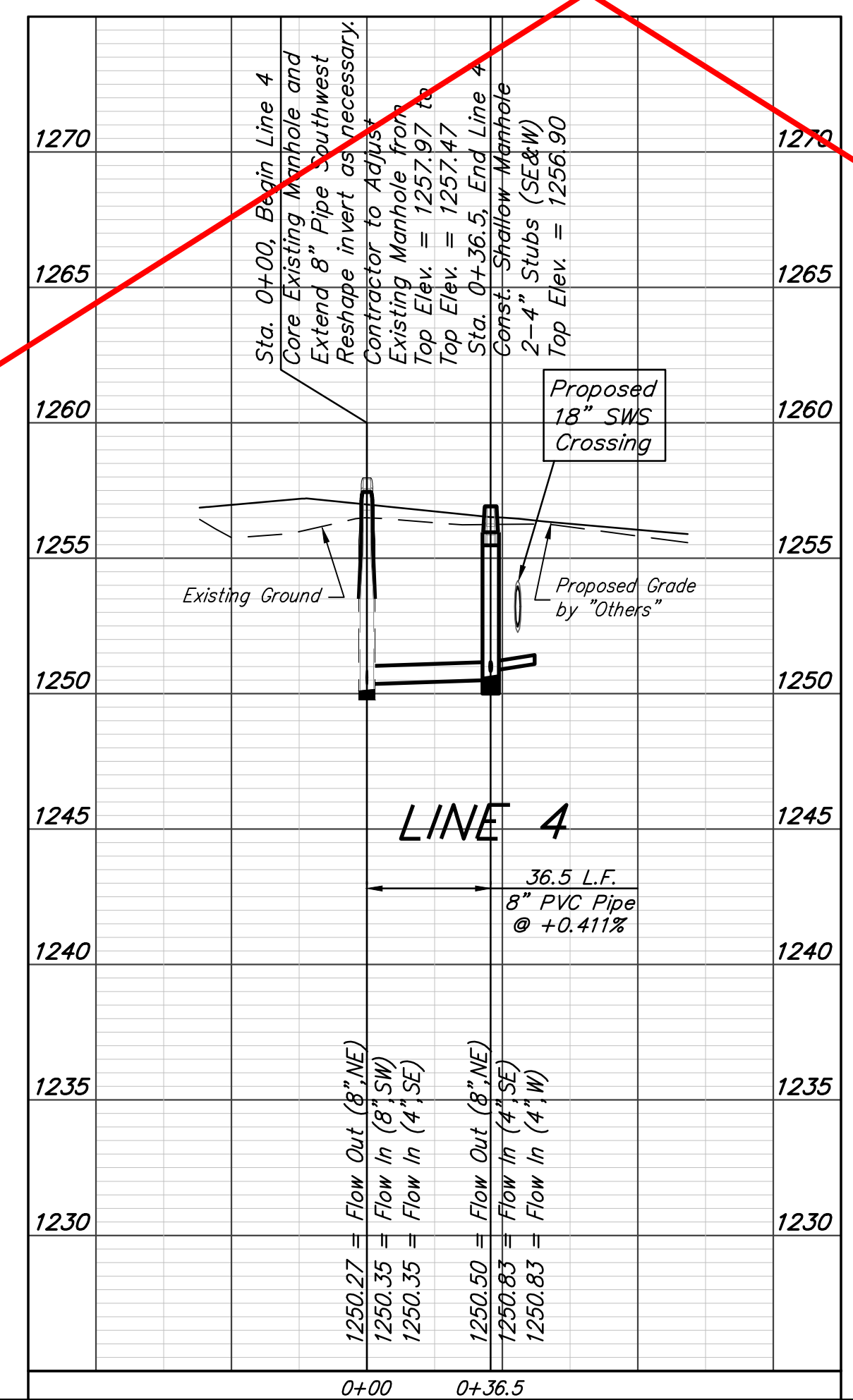
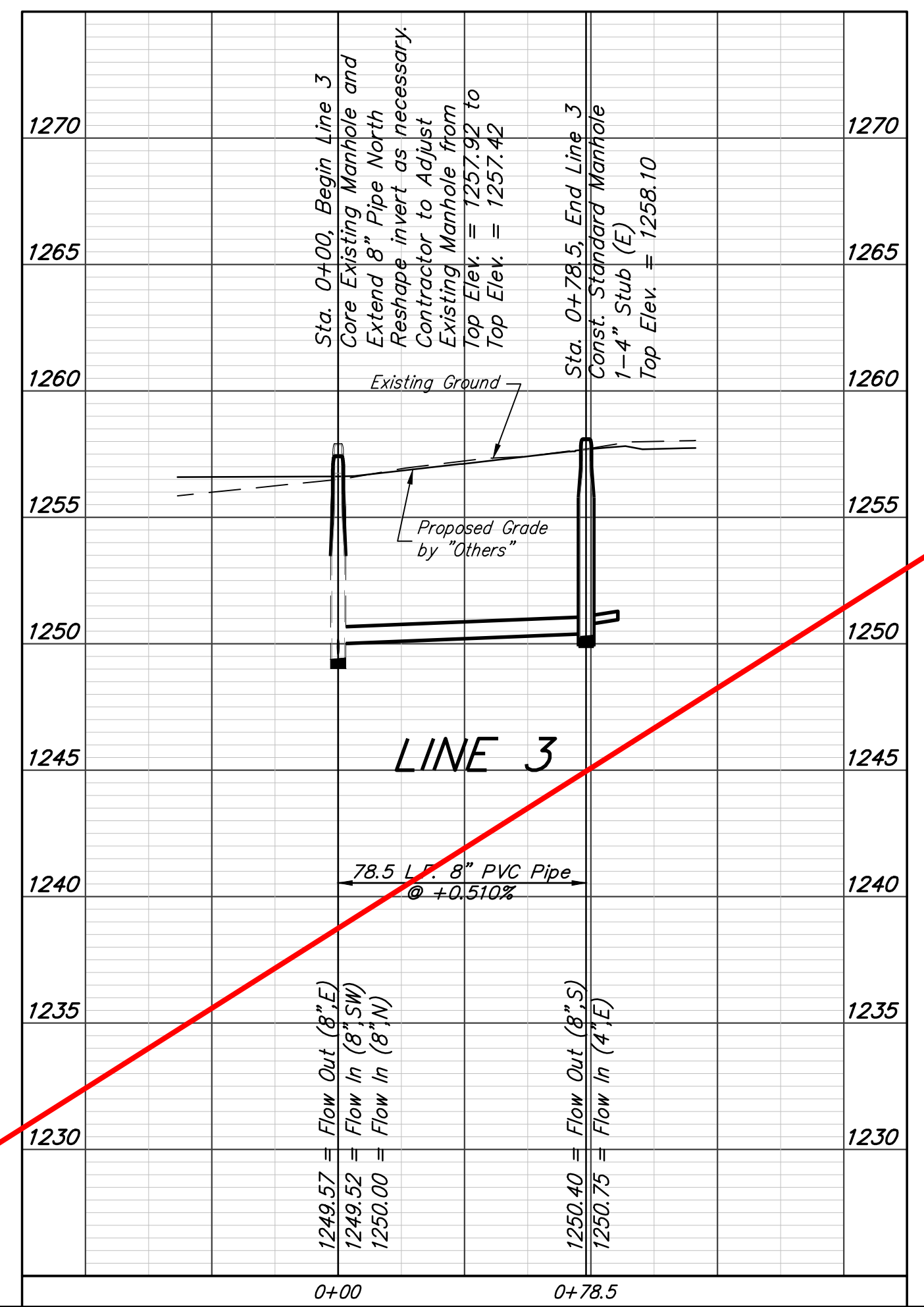
See Revised Sheet

All Costs associated with removing existing 4" stub and sealing manhole wall shall be included in bid item "MH, Connect to Existing"

SEWER SERVICE TABLE

NUMBER	TYPE	LOCATION			FOR INFORMATION ONLY		
		LOT NO.	BLOCK NO.	LINE NO.	STATION/DIRECTION	APPROXIMATE LENGTH 4" PIPE	
						VERTICAL	HORIZONTAL
3	4" Stub	6	B	3	0+78.5/Rt.	-	10'
4	4" Stub	1	B	4	0+36.5/Lt.	-	13'
5	4" Stub	11	B	4	0+36.5/Lt.	-	7'
6	8" x 4" Wye	12	B	5	0+17.5/Rt.	-	10'

NOTE: If vertical riser pipe length is greater than zero, the vertical portion of the riser shall be extended to 2' minimum above ground water elevation and 4' maximum below proposed ground elevation.



Baughman ENGINEERING | SURVEYING | PLANNING | LANDSCAPE ARCHITECTURE

Vassar Addition
LINES 3, 4, & 5
 Sanitary Sewer Improvements

PROJECT NUMBER: 468
 DESIGN: AEG
 DRAWN: JAK
 APPROVED: [Signature]
 DATE: 3/29/16

REVISIONS:

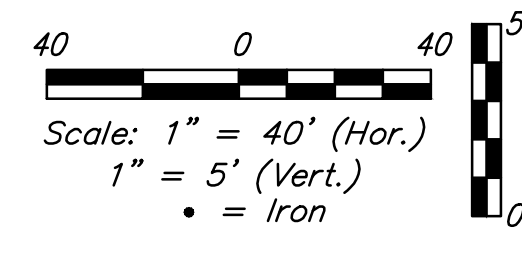
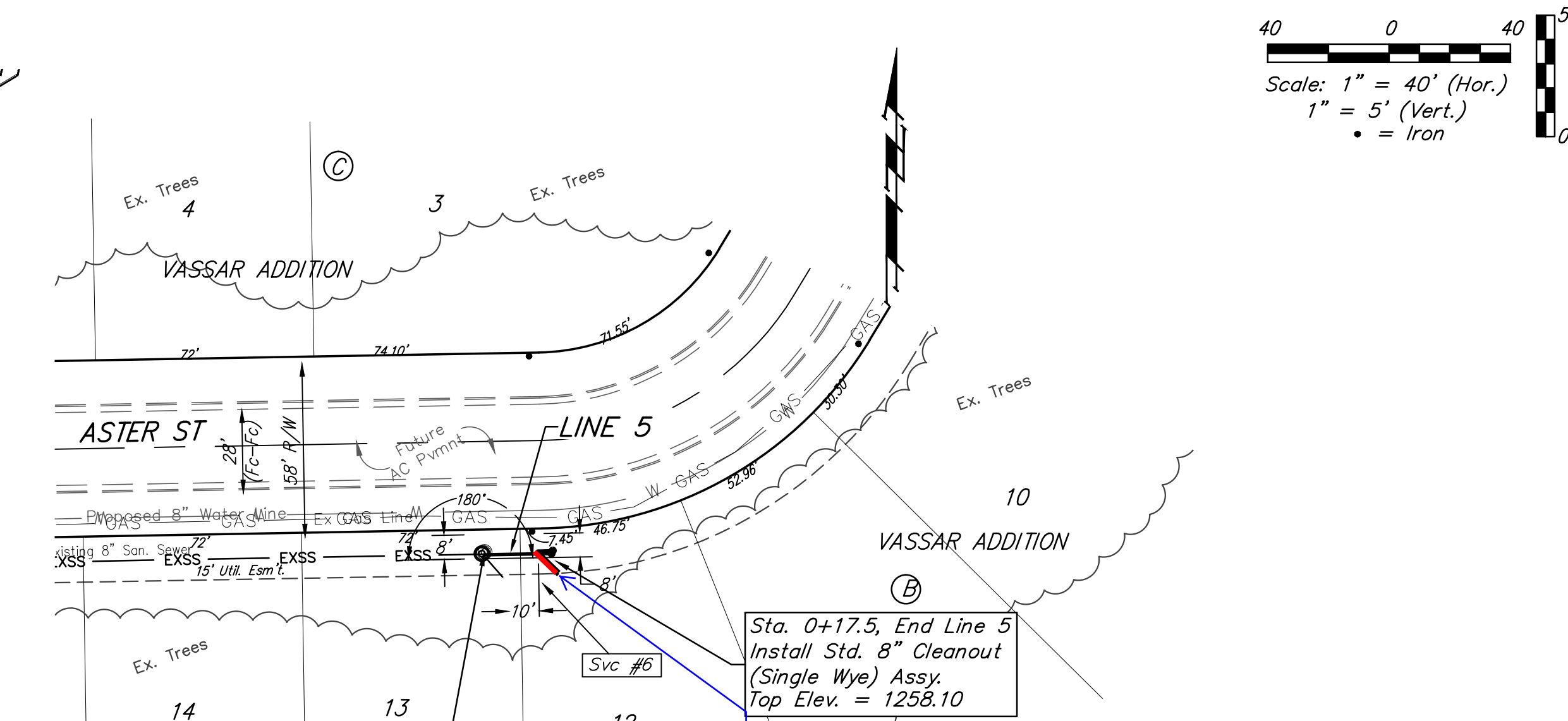
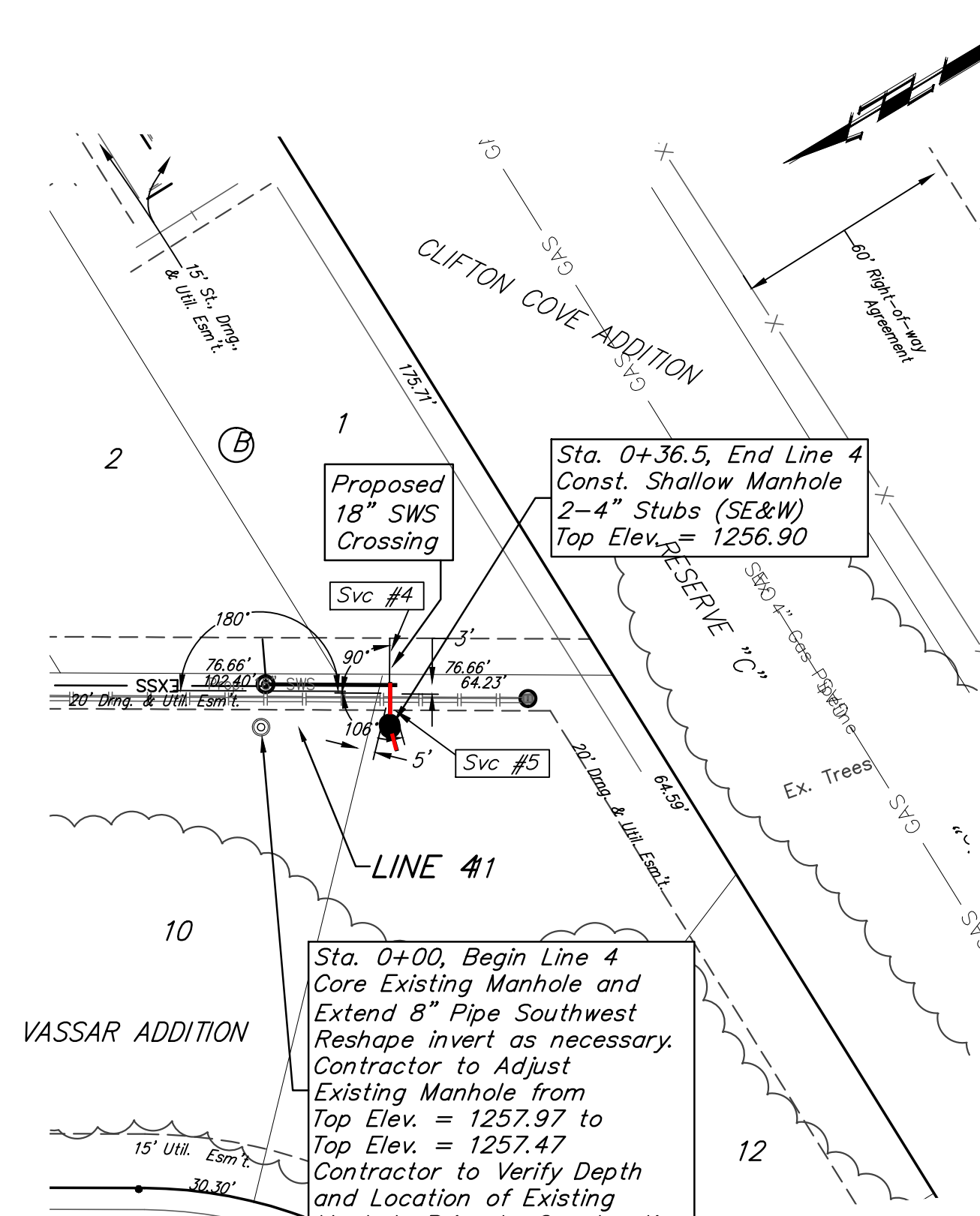
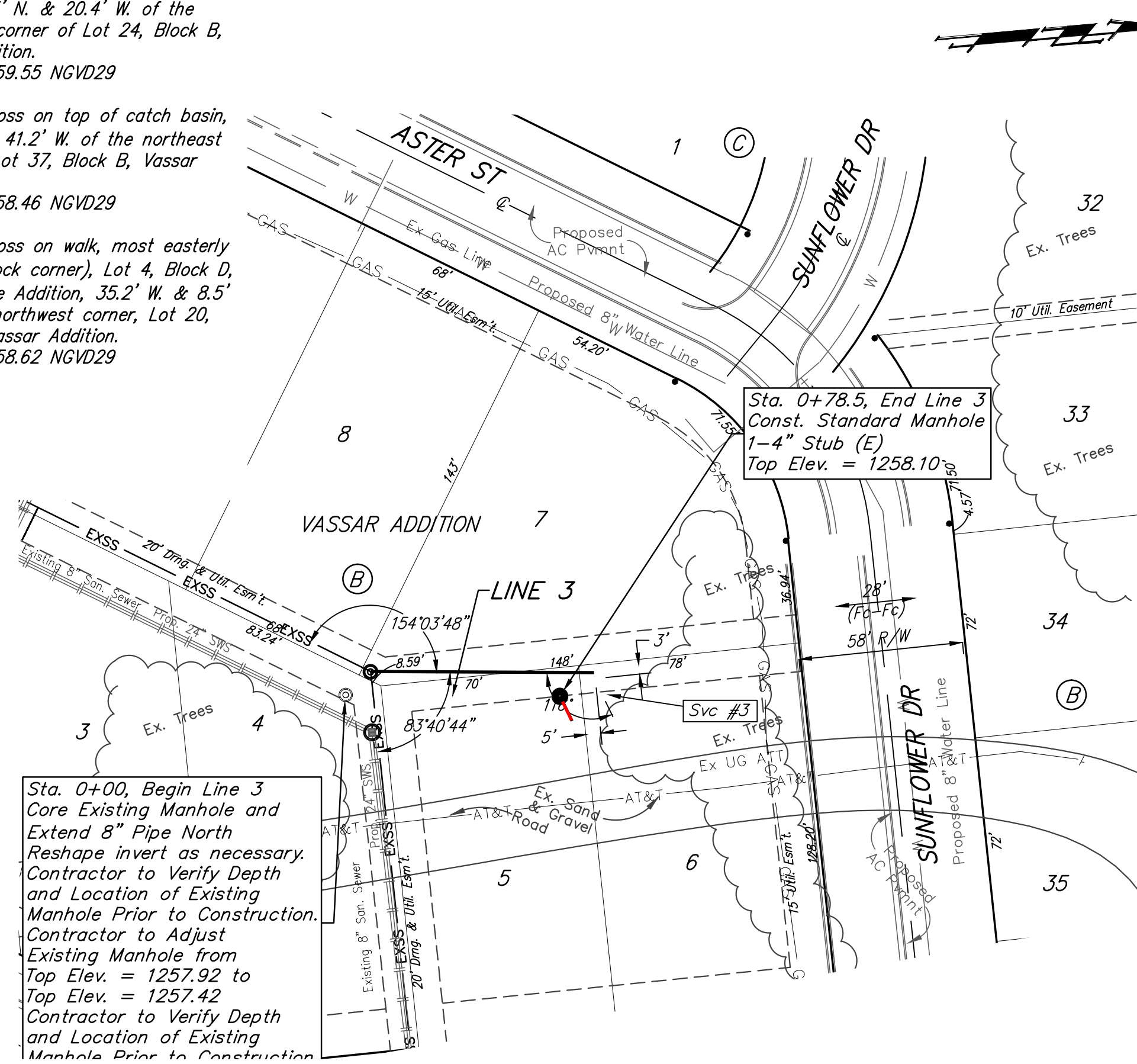
SCALE: Noted
 SHEET: 3 OF 16

E:\Projects\Vassar Addition_1403P029\Engineering\Phase 1\SS_1601E374\SS PLANS.dwg

BENCHMARKS:
 Chiseled square on top of catch basin, 43.5' N. & 20.4' W. of the northwest corner of Lot 24, Block B, Vassar Addition.
 Elev. = 1259.55 NGVD29

Chiseled cross on top of catch basin, 48.2' N. & 41.2' W. of the northeast corner of Lot 37, Block B, Vassar Addition.
 Elev. = 1258.46 NGVD29

Chiseled cross on walk, most easterly corner, (block corner), Lot 4, Block D, Clifton Cove Addition, 35.2' W. & 8.5' S. of the northwest corner, Lot 20, Block B, Vassar Addition.
 Elev. = 1258.62 NGVD29



Sta. 0+00, Begin Line 3
 Core Existing Manhole and
 Extend 8" Pipe North
 Reshape invert as necessary.
 Contractor to Verify Depth
 and Location of Existing
 Manhole Prior to Construction.
 Contractor to Adjust
 Existing Manhole from
 Top Elev. = 1257.92 to
 Top Elev. = 1257.42
 Contractor to Verify Depth
 and Location of Existing
 Manhole Prior to Construction.

Sta. 0+00, Begin Line 4
 Core Existing Manhole and
 Extend 8" Pipe Southwest
 Reshape invert as necessary.
 Contractor to Adjust
 Existing Manhole from
 Top Elev. = 1257.97 to
 Top Elev. = 1257.47
 Contractor to Verify Depth
 and Location of Existing

Sta. 0+00, Begin Line 5
 Core Existing Manhole and
 Extend 8" Pipe East
 Remove existing 4" stub (SE)
 Seal manhole wall water tight.
 Reshape invert as necessary.
 Contractor to Adjust
 Existing Manhole from
 Top Elev. = 1259.15 to
 Top Elev. = 1258.65
 Contractor to Verify Depth
 and Location of Existing
 Manhole Prior to Construction.

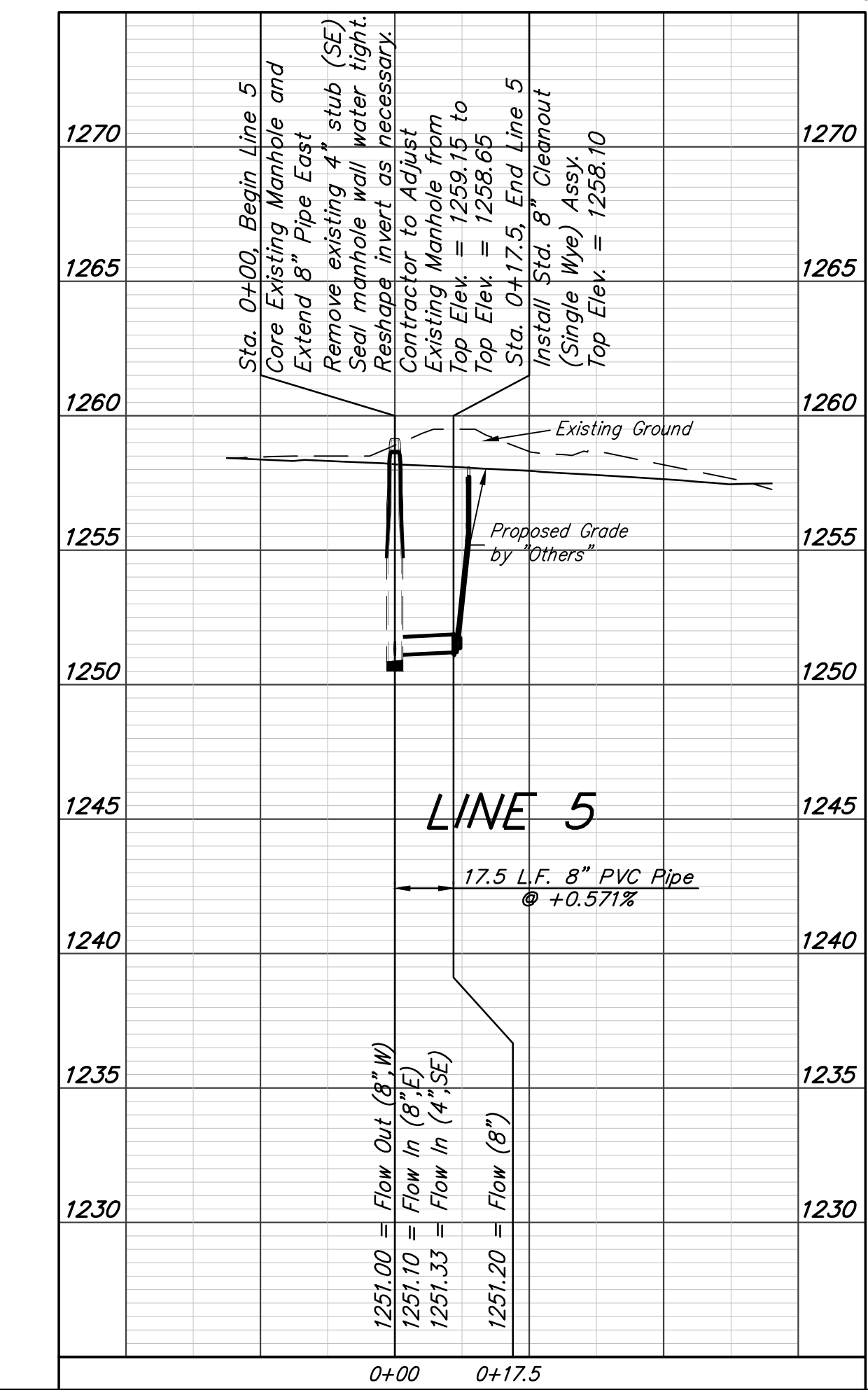
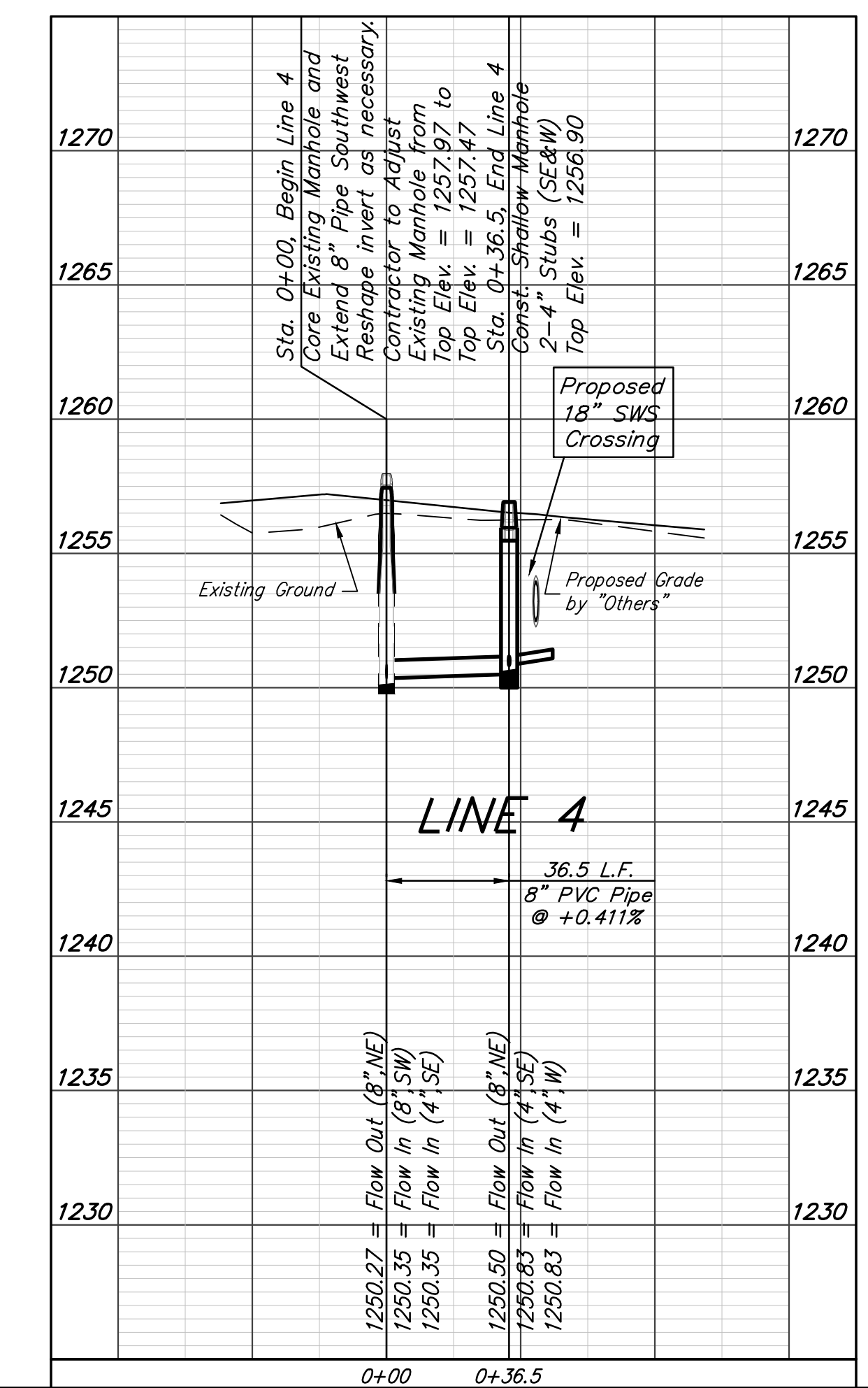
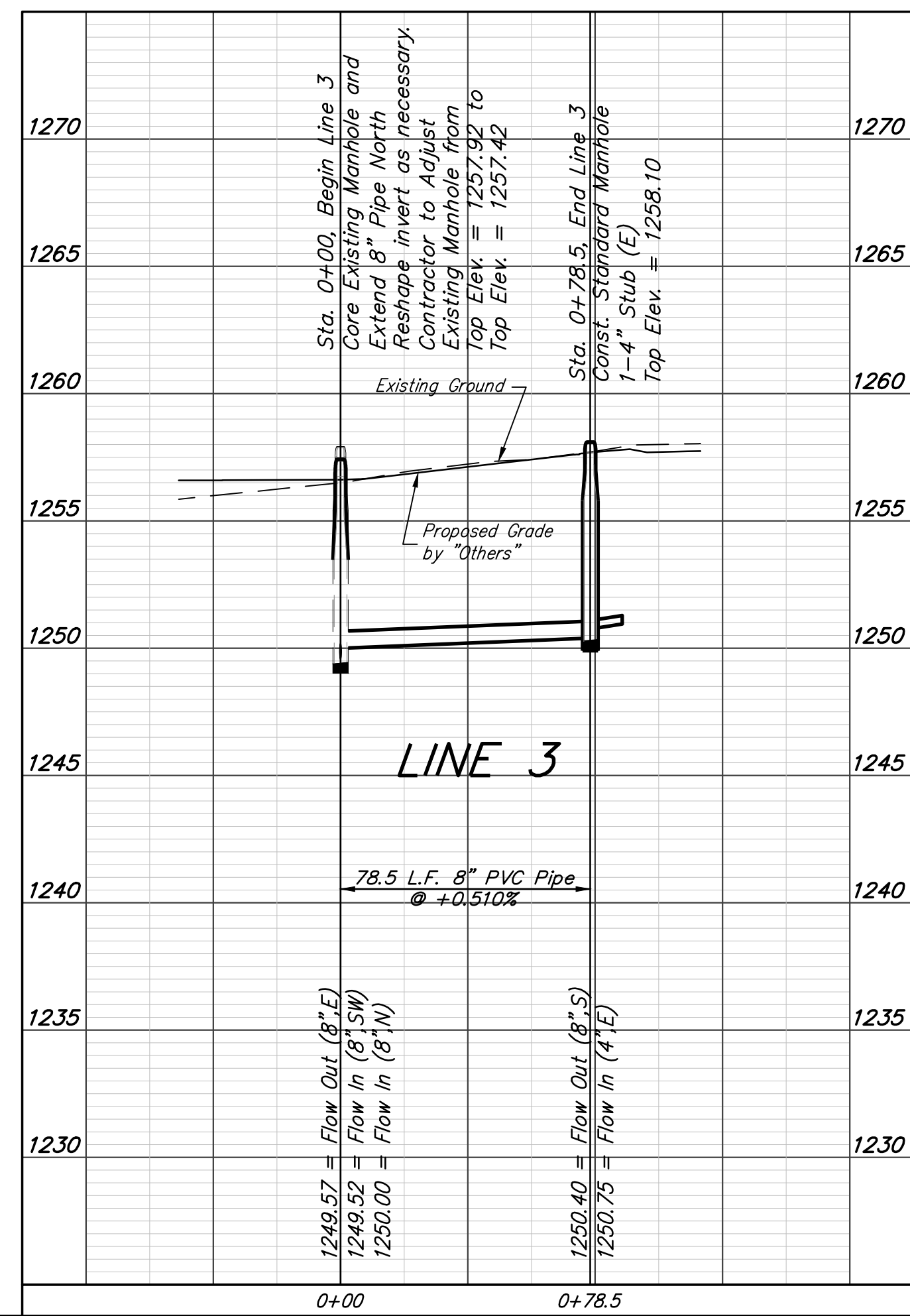
Riser #6, Line 5
 Lot 12, Blk B
 Dist. from Main to Riser: 10' Rt
 Dist. from DSMH: 17.5'

The Contractor shall be required to backfill trench with sand from Sta. 0+00 to Sta. 0+17.5, Line 5 To be bid as L.F. "Fill, Sand (Flushed & Vibrated)"

All Costs associated with removing existing 4" stub and sealing manhole wall shall be included in bid item "MH, Connect to Existing"

NUMBER	TYPE	LOCATION			FOR INFORMATION ONLY		
		LOT NO.	BLOCK NO.	LINE NO.	STATION/DIRECTION	APPROXIMATE LENGTH 4" PIPE	
						VERTICAL	HORIZONTAL
3	4" Stub	6	B	3	0+78.5/Rt.	-	10'
4	4" Stub	1	B	4	0+36.5/Lt.	-	13'
5	4" Stub	11	B	4	0+36.5/Lt. Rt.	-	7'
6	8" x 4" Wye	12	B	5	0+17.5/Rt.	-	10'

NOTE: If vertical riser pipe length is greater than zero, the vertical portion of the riser shall be extended to 2' minimum above ground water elevation and 4' maximum below proposed ground elevation.



Baughman Vassar Addition
LINES 3, 4, & 5
 Sanitary Sewer Improvements

Baughman Company, P.A. 315 Ellis St. Wichita, KS 67211 P 316-262-2149
 ENGINEERING | SURVEYING | PLANNING | LANDSCAPE ARCHITECTURE

PROJECT NUMBER: 468
 DESIGN: AEG
 DRAWN: JAK
 APPROVED: [Signature]
 DATE: 3/29/16

REVISIONS:

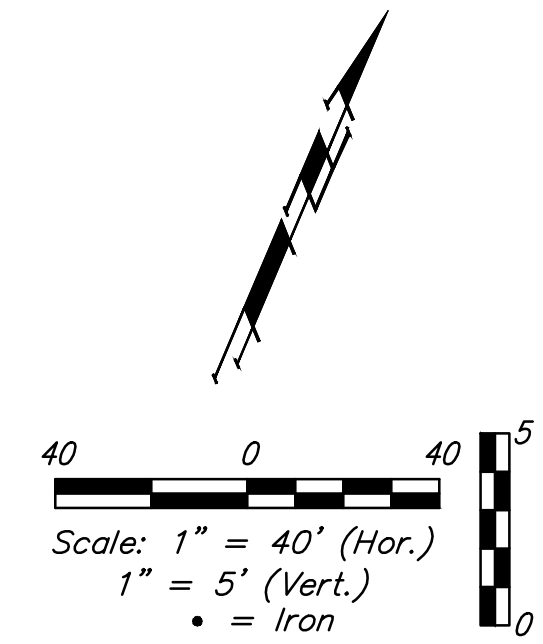
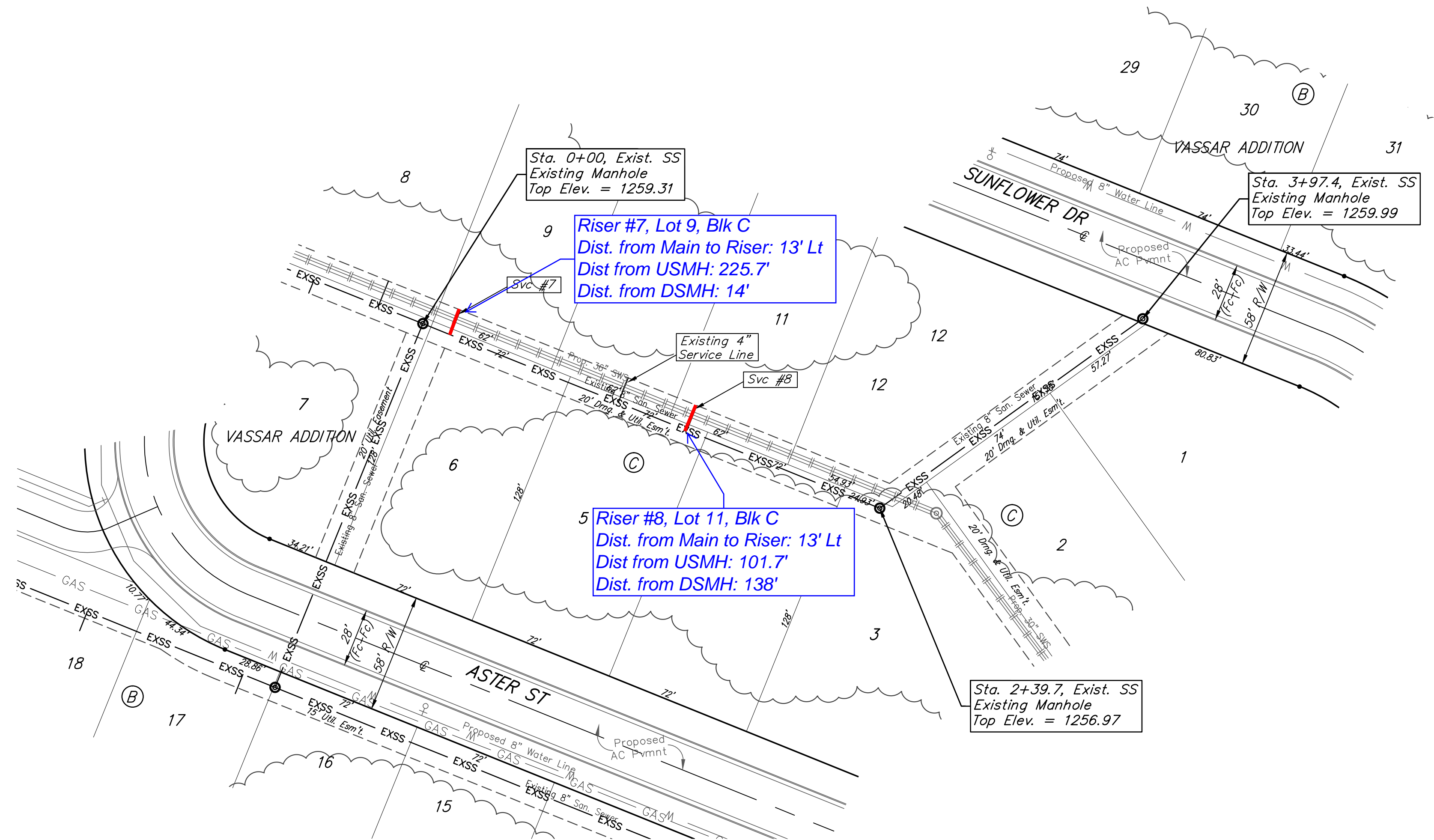
SCALE: Noted
 SHEET: **3 OF 16**

E:\Projects\Vassar Addition_1403P029\Engineering\Phase 1\SS_1601E374\SS PLANS.dwg

BENCHMARKS:
 Chiseled square on top of catch basin, 43.5' N. & 20.4' W. of the northwest corner of Lot 24, Block B, Vassar Addition.
 Elev. = 1259.55 NGVD29

Chiseled cross on top of catch basin, 48.2' N. & 41.2' W. of the northeast corner of Lot 37, Block B, Vassar Addition.
 Elev. = 1258.46 NGVD29

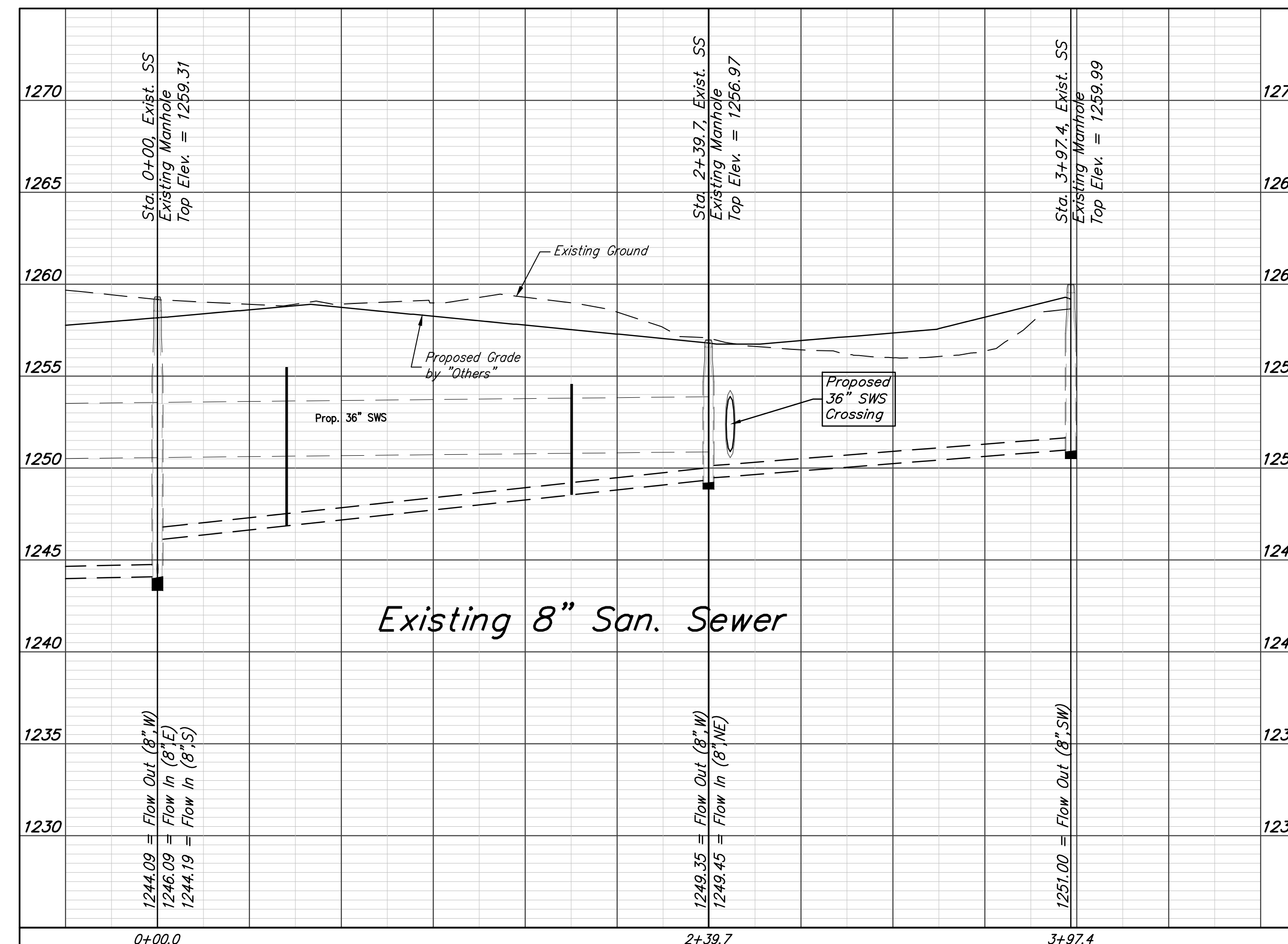
Chiseled cross on walk, most easterly corner, (block corner), Lot 4, Block D, Clifton Cove Addition, 35.2' W. & 8.5' S. of the northwest corner, Lot 20, Block B, Vassar Addition.
 Elev. = 1258.62 NGVD29



SEWER SERVICE TABLE

NUMBER	TYPE	LOCATION			FOR INFORMATION ONLY		
		LOT NO.	BLOCK NO.	LINE NO.	STATION/DIRECTION	APPROXIMATE LENGTH 4" PIPE	
7	4" Service Tap	9	C	-	0+14/Lt.	8.2'	13'
8	4" Service Tap	11	C	-	1+38/Lt.	6'	13'

NOTE: If vertical riser pipe length is greater than zero, the vertical portion of the riser shall be extended to 2' minimum above ground water elevation and 4' maximum below proposed ground elevation.



Baughman Vassar Addition
Risers to be installed on existing San. Sewer
 Sanitary Sewer Improvements

Baughman Company, P.A. 315 Ellis St. Wichita, KS 67211 P 316-262-7271 F 316-262-0149
 ENGINEERING | SURVEYING | PLANNING | LANDSCAPE ARCHITECTURE

PROJECT NUMBER 468	DESIGN AEG	DRAWN JAK
REVISIONS:	APPROVED	DATE 3/29/16
	SCALE Noted	SHEET

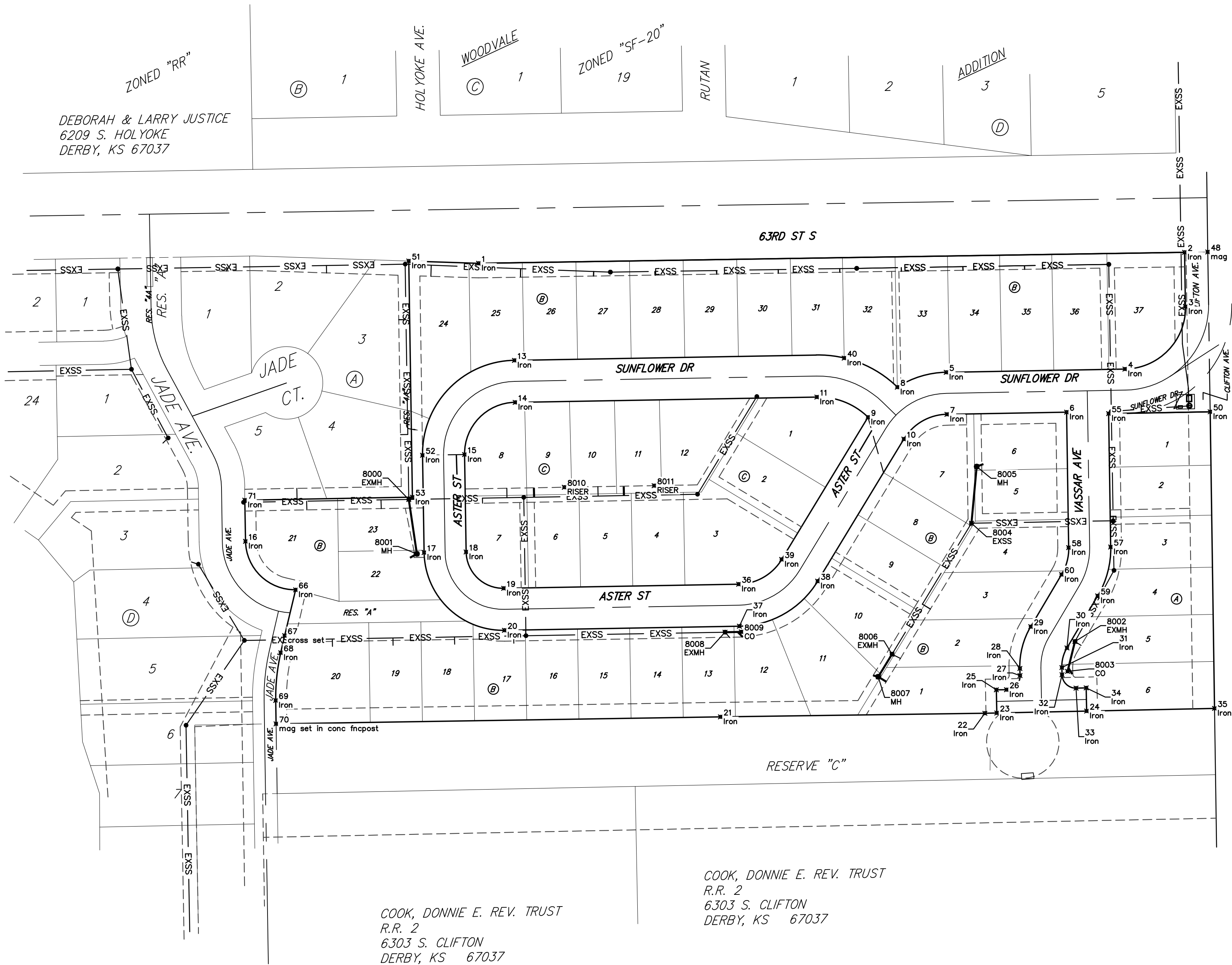
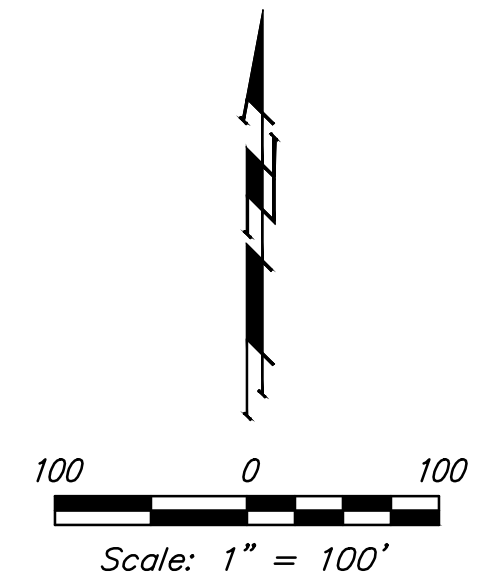
4 OF 16

E:\Projects\Vassar Addition_1403P029\Engineering\Phase 1\SS_1601-E374\SS PLANS.dwg

BENCHMARKS:
 Chiseled square on top of catch basin, 43.5' N. & 20.4' W. of the northwest corner of Lot 24, Block B, Vassar Addition.
 Elev. = 1259.55 NGVD29

Chiseled cross on top of catch basin, 48.2' N. & 41.2' W. of the northeast corner of Lot 37, Block B, Vassar Addition.
 Elev. = 1258.46 NGVD29

Chiseled cross on walk, most easterly corner, (block corner), Lot 4, Block D, Clifton Cove Addition, 35.2' W. & 8.5' S. of the northwest corner, Lot 20, Block B, Vassar Addition.
 Elev. = 1258.62 NGVD29



CONTROL POINTS		
Point #	Northing	Easting
1	25434.09	48953.09
2	25449.32	49272.58
3	25374.36	49928.68
4	25288.12	49845.19
5	25283.76	49598.54
6	25228.69	49764.68
7	25225.77	49599.56
8	25263.25	49530.99
9	25221.69	49490.53
10	25191.61	49540.12
11	25249.58	49420.13
13	25300.21	49002.53
14	25242.21	49003.55
15	25170.14	48933.82
16	25050.44	48631.40
17	25034.89	48877.88
18	25035.78	48935.87
19	24985.56	48987.77
20	24927.57	48988.79
21	24808.09	49286.94
22	24813.01	49551.94
23	24813.36	49668.44
24	24816.03	49792.41
25	24845.36	49667.75
26	24845.66	49681.75
27	24865.06	49700.34
28	24874.92	49700.12
29	24932.64	49715.22
30	24903.17	49765.17
31	24876.16	49758.11
32	24866.31	49758.32
33	24847.72	49777.73
34	24848.03	49791.73
35	24819.83	49668.87
36	24991.30	49312.03
37	24933.31	49313.05
38	24995.37	49421.06
39	25025.46	49371.48
40	25303.42	49457.75
48	25449.82	49959.58
50	25229.21	49662.82
51	25437.25	48856.73
52	25169.24	48875.82
53	25111.35	48861.71
55	25226.71	49822.71
57	25042.60	49825.49
58	25041.72	49767.50
59	24975.08	49807.60
60	25004.57	49757.64
66	24983.47	48700.58
67	24920.21	48685.51
68	24896.55	48680.05
69	24830.75	48673.07
70	24798.45	48673.60
71	25107.27	48630.53

SS POINTS			
Point #	Northing	Easting	Description
8000	25108.27	48856.76	EXMH
8001	25033.11	48867.92	MH
8002	24912.09	49776.24	EXMH
8003	24870.84	49765.99	CO
8004	25075.34	49633.33	EXSS
8005	25153.48	49640.59	MH
8006	24894.58	49523.66	EXMH
8007	24863.33	49504.71	MH
8008	24924.96	49293.26	EXMH
8009	24925.35	49315.72	CO
8010	25125.07	49071.46	RISER
8011	25127.26	49195.44	RISER



COOK, DONNIE E. REV. TRUST
 R.R. 2
 6303 S. CLIFTON
 DERBY, KS 67037

COOK, DONNIE E. REV. TRUST
 R.R. 2
 6303 S. CLIFTON
 DERBY, KS 67037

ROBAIRE, ROBERT F. & CAROLYN S.
 6359 S. CLIFTON
 DERBY, KS 67037

INTERHALTER, KURT L. JUDL.
 3818 E. 63RD ST. S.
 DERBY, KS 67037

		Vassar Addition COORDINATES Sanitary Sewer Improvements	
Baughman Company, P.A. 315 Ellis St. Wichita, KS 67211 P 316-262-7271 F 316-262-0149 ENGINEERING SURVEYING PLANNING LANDSCAPE ARCHITECTURE			
PROJECT NUMBER 468	DESIGN AEG	DRAWN JAK	
REVISIONS:	APPROVED	DATE 3/10/16	
	SCALE Noted	SHEET 15 OF 16	

VASSAR ADDITION WICHITA, SEDGWICK COUNTY, KANSAS

Know all men by these presents that we, the undersigned, have caused the land in the surveyors certificate to be platted into Lots, Blocks, Streets and Reserves to be known as "VASSAR ADDITION", Wichita, Sedgwick County, Kansas. The utility easements are hereby granted as indicated for the construction and maintenance of all public utilities. The drainage and utility easements are hereby granted as indicated for drainage purposes and for the construction and maintenance of all public utilities. The drainage easements are hereby granted as indicated for drainage purposes. The street, drainage, and utility easements are hereby granted as indicated for street purposes, including sidewalks, for drainage purposes, and for the construction and maintenance of all public utilities. The streets are hereby dedicated to and for the use of the public. Reserve "A" is reserved for open space, landscaping, drainage purposes, an emergency access drive, signage, gates, a private access drive, recreational uses, and utilities as confined to easement. Reserve "AA" is reserved for open space, fences, landscaping, drainage purposes, and utilities as confined to easement. Reserve "A" shall be owned and maintained by the homeowners association for the addition. Reserve "AA" shall be owned and maintained by the homeowner of Lot 4, Block A, Clifton Cove Addition. Access controls shall be as depicted on the face of the plat and are hereby granted to the City of Wichita, Kansas. FEMA floodplain boundaries are subject to periodic change, and such change may affect the intended land use within the subdivision. The Minimum Building Pad Elevations for the lowest opening to the structures shall be as indicated on the face of the plat.

Coywood, L.L.C.,
a Kansas limited liability company

_____, Member
Jay W. Russell

State of Kansas) SS The foregoing instrument acknowledged before me, this _____ day of _____, by Jay W. Russell, Member of Coywood, L.L.C., a Kansas limited liability company, on behalf of the limited liability company.

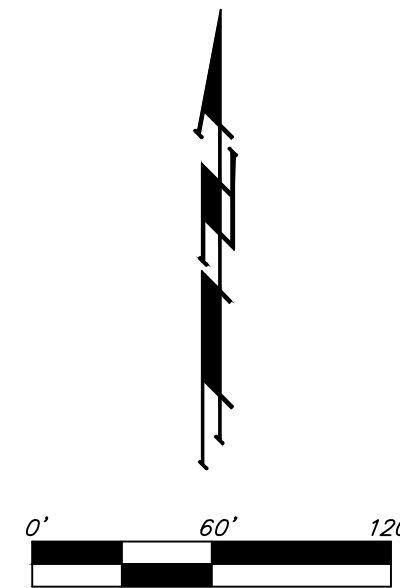
My App't. Exp. _____, Notary Public

State of Kansas) SS We, Baughman Company, P.A., Surveyors in aforesaid county and state do hereby certify that we have surveyed and platted "VASSAR ADDITION", Wichita, Sedgwick County, Kansas and that the accompanying plat is a true and correct exhibit of the property surveyed, described as and being a replat of all of Lots 6, 7, 8, 9, 10, 11, 12, 13, 14, 15, 16, 17, 18, 19, 20, 21, 22, 23, 24, 25, 26, 27, 28, 29, and 30, Block A, TOGETHER with all of Lots 1, 2, 3, 4, 5, 6, 7, 8, 9, 10, 11, 12, 13, 14, 15, and 16, Block B, TOGETHER with all of Lots 1, 2, 3, and 4, Block C, TOGETHER with all of Clifton Ave., Vassar Ave., and Sunflower Ct., all as platted and dedicated in Clifton Cove Addition, Wichita, Sedgwick County, Kansas, TOGETHER with that part of Sunflower Dr. as dedicated in said Clifton Cove Addition lying generally east of and abutting the following described line: Beginning at the northwest corner of Lot 1 in said Block B; thence N13°24'39"E, 65.05 feet to the point of curvature in the south line of Lot 6 in said Block A, and for a point of termination.

Existing public easements, building setbacks, access controls, and dedications, if any, being vacated by virtue of K.S.A. 12-512b, as amended.

Baughman Company, P.A.

_____, Surveyor
Michael G. Conrey



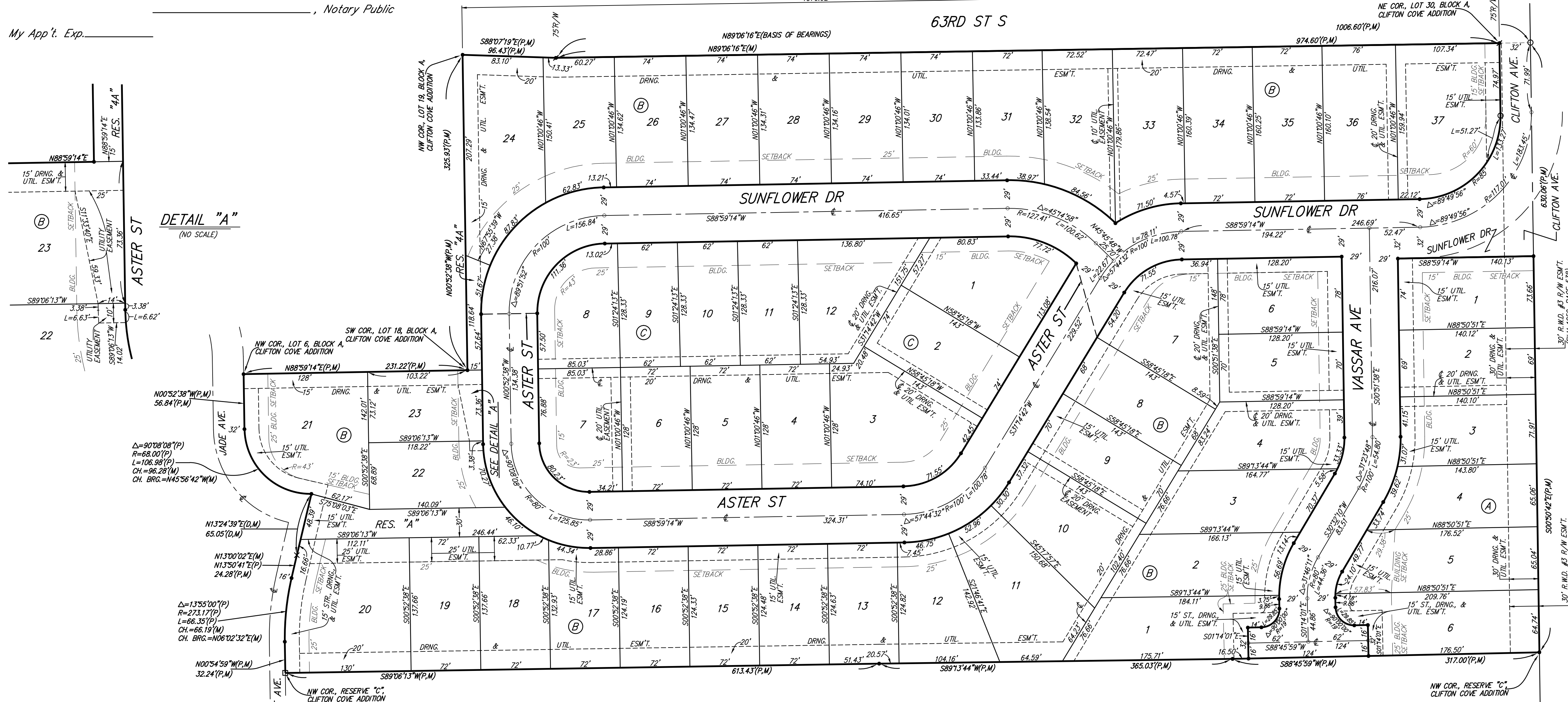
LOT	BLOCK	ELEVATION
1-6	A	1259.5
1-37	B	1259.5
1-12	C	1259.5

BENCHMARK:
CHISELED SQUARE ON TOP OF CATCH BASIN,
43.5' N. & 20.4' W. OF THE NORTHWEST CORNER
OF LOT 24, BLOCK B, VASSAR ADDITION.
ELEV. = 1258.55 NGVD29

BENCHMARK:
CHISELED CROSS ON TOP OF CATCH BASIN,
48.2' N. & 41.2' W. OF THE NORTHEAST CORNER
OF LOT 24, BLOCK B, VASSAR ADDITION.
ELEV. = 1258.46 NGVD29

BENCHMARK:
CHISELED CROSS ON WALK, MOST EASTERLY CORNER,
(BLOCK CORNER), LOT 4, BLOCK D, CLIFTON COVE
ADDITION, 35.2' W. & 8.5' S. OF THE NORTHWEST
CORNER, LOT 20, BLOCK B, VASSAR ADDITION.
ELEV. = 1258.62 NGVD29

- = #4 REBAR W/ "BAUGHMAN" CAP (SET)
- = #4 REBAR W/ "BAUGHMAN" CAP (FOUND)
- = MAG NAIL IN CONC. FOOTING
- = MAG NAIL (FOUND)
- × = CHISELED CROSS (FOUND)
- (M) = MEASURED
- (P) = PLATTED
- (D) = DESCRIBED



DETAIL "A"
(NO SCALE)

NOTE:
PRIOR TO CONSTRUCTION, LOT OWNERS SHALL VERIFY EXISTING LOT ELEVATIONS AS COMPARED TO CORRECT FEMA FLOODPLAIN ELEVATIONS TO DETERMINE IF ANY FEMA REMOVALS OR PERMITTING IS NECESSARY.

NOTE:
A drainage plan has been developed for the plat and all drainage easements, rights-of-way, or reserves shall remain at established grades or as modified with the approval of the applicable City Engineer and unobstructed to allow for the conveyance of stormwater.

NOTE:
10 FOOT WIDE RIGHT-OF-WAY GRANT, (FILM 189, PAGE 909), IN FAVOR OF CHARLES W. HAWTHORNE AND WINTA M. HAWTHORNE, AND NOW ASSIGNED TO SHELLEY GAS GATHERING, INC., (FILM 350, PAGE 807), AFFECTS A PORTION OF THIS PLAT AND IS IN THE PROCESS OF BEING RELEASED.

NOTE:
16 FOOT WIDE RIGHT-OF-WAY GRANT, (MISC. BOOK 96, PAGE 969), IN FAVOR OF DONNIE E. COOK AND NORMA J. COOK, AND NOW ASSIGNED TO SHELLEY GAS GATHERING, INC., (FILM 350, PAGE 807), AFFECTS A PORTION OF THIS PLAT AND IS IN THE PROCESS OF BEING RELEASED.

NOTE:
16 FOOT WIDE RIGHT-OF-WAY GRANT, (MISC. BOOK 86, PAGE 1375), IN FAVOR OF DONNIE E. COOK AND NORMA J. COOK, AND NOW ASSIGNED TO SHELLEY GAS GATHERING, INC., (FILM 350, PAGE 807), AFFECTS A PORTION OF THIS PLAT AND IS IN THE PROCESS OF BEING RELEASED.

We, the undersigned holders of a mortgage on the above described property, do hereby consent to this plat of "VASSAR ADDITION", Wichita, Sedgwick County, Kansas.

Legacy Bank
_____, (Title)

State of Kansas) SS The foregoing instrument acknowledged before me, this _____ day of _____, by _____ of Legacy Bank, on behalf of the bank.
_____, (Title)

_____, Notary Public
My App't. Exp. _____

This plat of "VASSAR ADDITION", Wichita, Sedgwick County, Kansas has been submitted to and approved by the Wichita-Sedgwick County Metropolitan Area Planning Commission, Wichita, Kansas.

Dated this _____ day of _____, _____, Secretary
Wichita-Sedgwick County Metropolitan Area Planning Commission

_____, Chair
Carol Chapman Neugent
_____, Secretary
Date Miller

This plat approved and all dedications shown hereon accepted by the City Council of the City of Wichita, Kansas, this _____ day of _____.

_____, Mayor
Jeff Longwell
_____, City Clerk
Karen Sublett

Reviewed in accordance with K.S.A. 58-2005 on this _____ day of _____.

Tricia L. Robello, L.S. #1246
Deputy County Surveyor
Sedgwick County, Kansas

Entered on transfer record this _____ day of _____.

_____, County Clerk
Kelly B. Arnold

State of Kansas) SS This is to certify that this plat has been filed for record in the office of the Register of Deeds, this _____ day of _____, at _____ o'clock _____ M.; and is duly recorded.

_____, Register of Deeds
Bill Meek
_____, Deputy
Tonya Buckingham