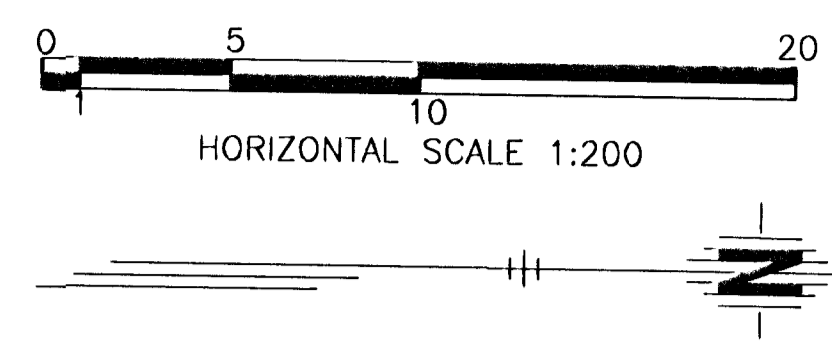
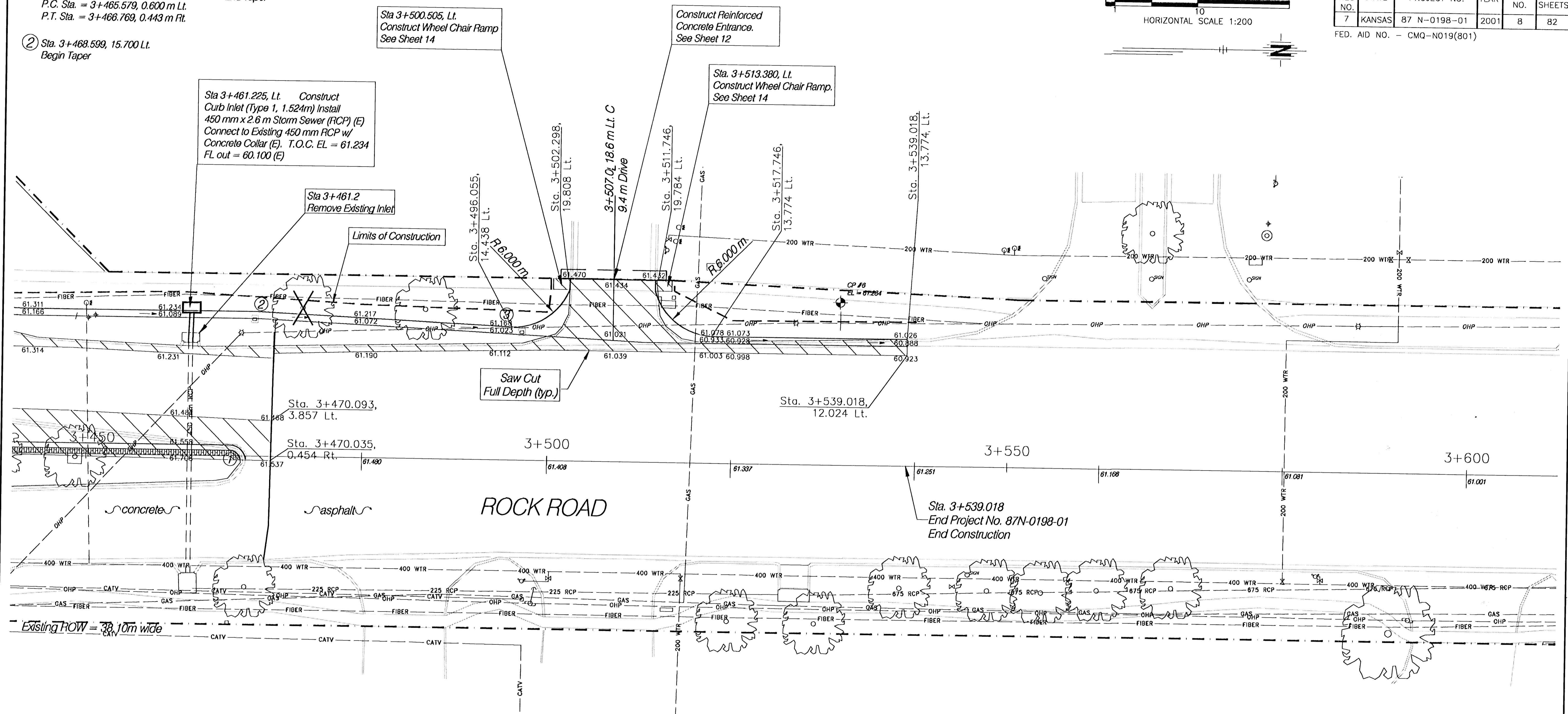


- ① 1.200 m R.  
R.P. Sta. = 3+465.579, 0.600 m Rt.  
P.C. Sta. = 3+465.579, 0.600 m Lt.  
P.T. Sta. = 3+466.769, 0.443 m Rt.
- ② Sta. 3+468.599, 15.700 Lt.  
Begin Taper
- ③ Sta. 3+496.055, 14.438 Lt.  
End Taper



FHWA REG NO.	STATE	PROJECT NO.	YEAR	SHEET NO.	TOTAL SHEETS
7	KANSAS	87 N-0198-01	2001	8	82

FED. AID NO. - CMQ-N019(801)



- Legend**
- Water Flow →
  - Control Point
  - Pavement Removal
  - Construction Easement - - -
  - Limits of construction - - - -
  - Right Of Way - - - - -
  - Permanent Easement ·····
  - Remove Tree X

**CONTROL POINT INFORMATION**

CP #6  
3/4" REBAR  
Sta. 3+531.109, 17.651 LT.  
N 18184.113 E 11983.433  
ELEV 61.284

**ROCK ROAD PLAN**  
**STA. 3+450 - 3+600**

**HWS**  
Consulting Group Inc.

Manhattan Office  
3206 Kimball Avenue  
Manhattan, KS 66503  
Phone: (785) 539-2202  
Fax: (785) 539-2193

Designed By: JH	Checked By: JDM
Drawn By: CEW	Date: FEB 2002
Job No. 55-70-2003	