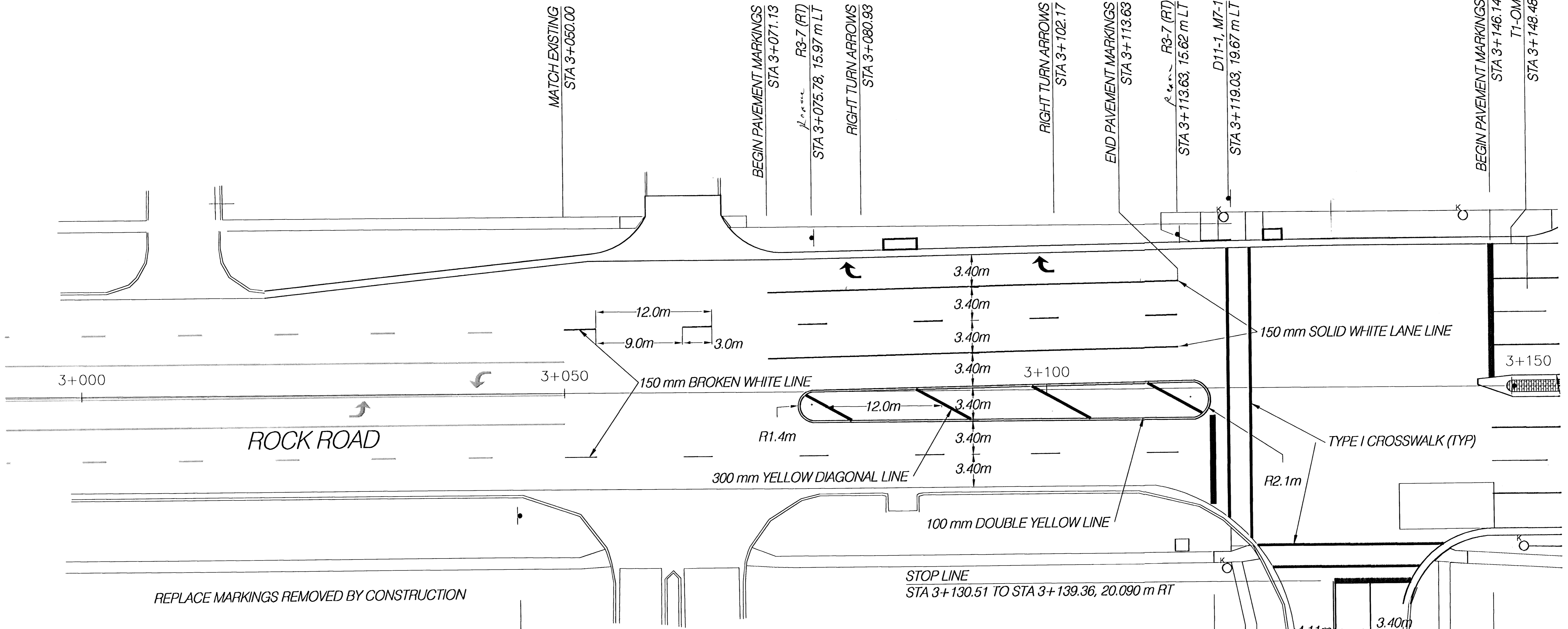


NOTE: USE THERMOPLASTIC FROM STA 3+017.50 TO STA 3+281.35 (ASPHALT SURFACE)
 USE COLD PLASTIC FROM STA 3+281.35 TO STA 3+470.04 (CONCRETE SURFACE)
 USE THERMOPLASTIC FROM STA 3+470.04 TO STA 3+538.98 (ASPHALT SURFACE)

FHWA REG NO.	STATE	PROJECT NO.	YEAR	SHEET NO.	TOTAL SHEETS
7	KANSAS	87 N-0198-01	2001	45	82

FED. AID NO. - CMQ-N019(801)

ROCK ROAD PMK.DWG



REPLACE MARKINGS REMOVED BY CONSTRUCTION

W11-1
STA 3+045.23, 12.63 m RT

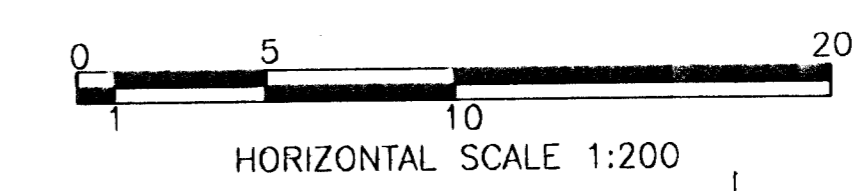
LEGEND

TRAFFIC SIGNAL POLE

SIGN LEGEND

Code	Description	Quantity
R3-7	RIGHT LANE MUST TURN RIGHT	2
D11-1	BIKE ROUTE	1
M7-1	DIRECTIONAL ARROW	1
W11-1	BICYCLE CROSSING	1
T1-OM	TYPE I OBJECT MARKER	1

100 mm DOUBLE YELLOW LINE (30 m)



32nd Street

4.11m
3.70m

150 mm SOLID WHITE LINE (25 m)

ROCK ROAD
PAVEMENT MARKINGS & SIGNING
 STA. 3+000 - 3+150

HWS Consulting Group Inc.
 Manhattan Office
 3206 Kimball Avenue
 Manhattan, KS 66503
 Phone: (785) 539-2202
 Fax: (785) 539-2393

Designed By: JJH
 Drawn By: BJD
 Checked By: JDM
 Date: 11/14/01
 Job No. 55-70-2003