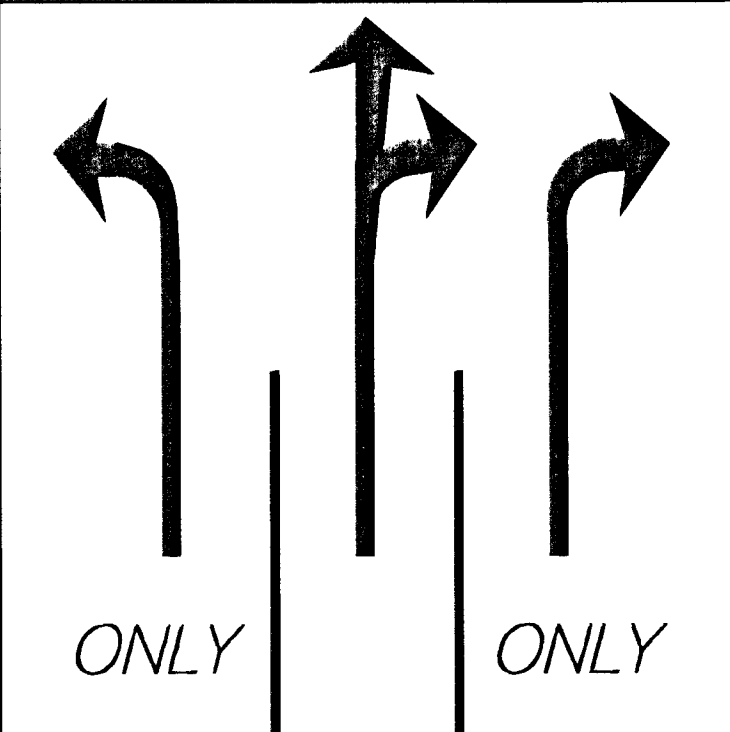
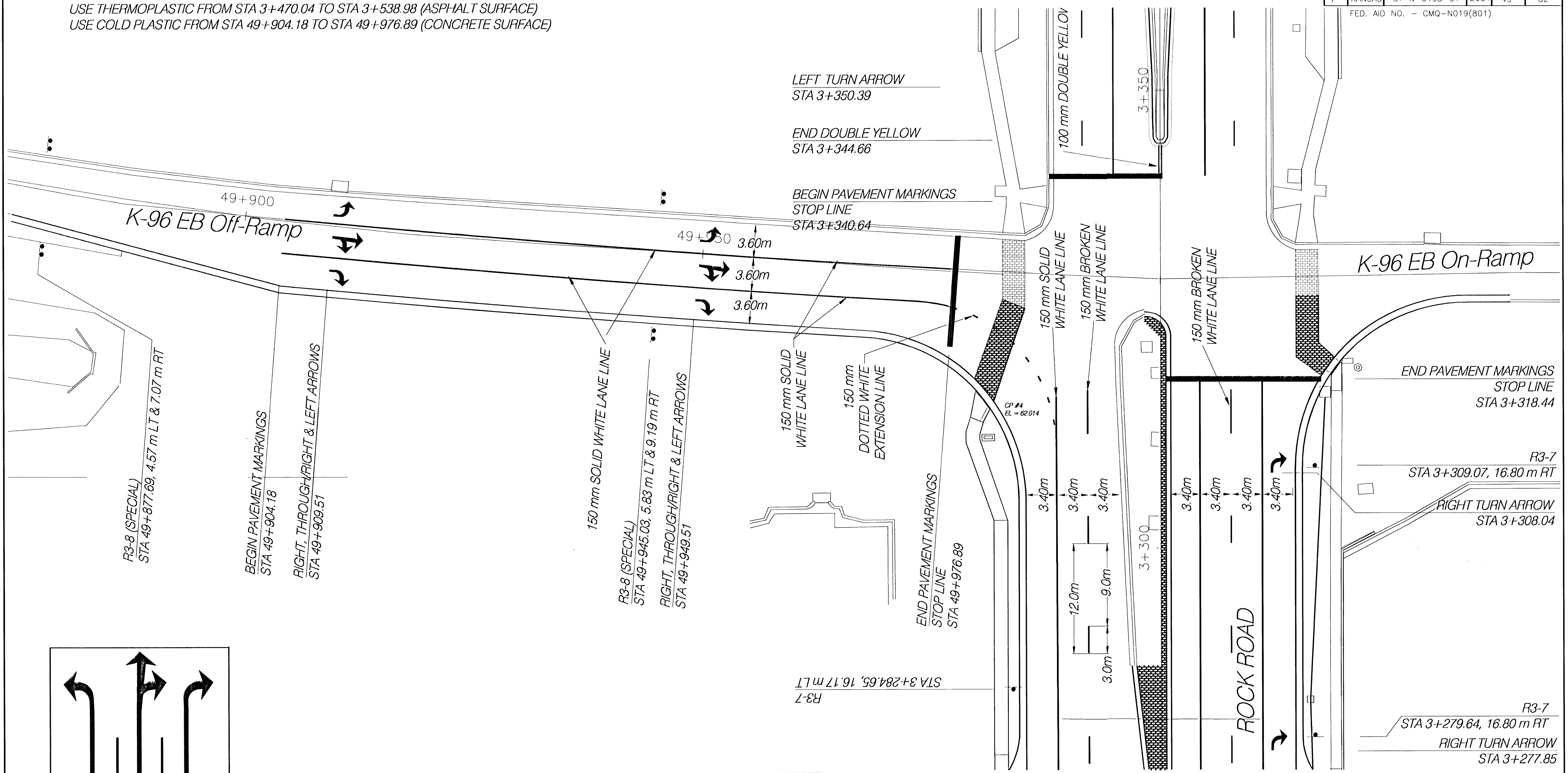


FHWA REG NO.	STATE	PROJECT NO.	YEAR	SHEET NO.	TOTAL SHEETS
7	KANSAS	87 N-0198-01	2001	49	82

FED. AID NO. - CMQ-N019(801)

NOTE: USE THERMOPLASTIC FROM STA 3+017.50 TO STA 3+281.35 (ASPHALT SURFACE)
 USE COLD PLASTIC FROM STA 3+281.35 TO STA 3+470.04 (CONCRETE SURFACE)
 USE THERMOPLASTIC FROM STA 3+470.04 TO STA 3+538.98 (ASPHALT SURFACE)
 USE COLD PLASTIC FROM STA 49+904.18 TO STA 49+976.89 (CONCRETE SURFACE)

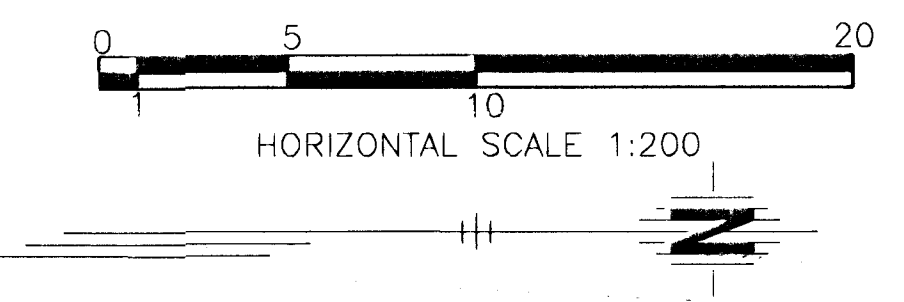
ROCK ROAD PMK.DWG



NOTE:
 2 POST SPACING
 BLACK ON WHITE
 1 200 x 1 200

SIGN LEGEND		
*R3-7	RIGHT LANE MUST TURN RIGHT	2
R3-8 (SPECIAL)	SEE DETAIL THIS SHEET	4

* SIGNS ACCOUNTED FOR ON OTHER SHEETS



**K-96 OFF RAMP
 PAVEMENT MARKINGS
 STA. 49+900 - 50+040**

HWS Consulting Group Inc.
 Manhattan Office
 3206 Kimball Avenue
 Manhattan, KS 66503
 Phone: (785) 539-2202
 Fax: (785) 539-2393

Designed By: J.J.H.	Checked By: J.M.
Drawn By: B.J.D.	Date: 11/14/01

Job No. 55-70-2003