

GENERAL NOTES

1. Utility service lines, poles, valve boxes, meters and etc. are to be adjusted as necessary by others prior to construction unless the plans specifically call for their adjustment by the Contractor. Existing utilities and their location, as shown on the plans, represent the best information obtainable for design. The Contractor will be required to work around existing utilities within the right-of-way which do not conflict with proposed construction.

Contractor will be required to provide notice to utility companies a minimum of seventy-two (72) hours prior to any excavation, as follows:

Kansas One-Call 687-2470

The Contractor must notify the following in case of an emergency:

Cox Communications (Cable)	260-7491	(James Walburn)
Westar Energy (Electric)	261-6315	(Shane Price)
Kansas Gas Service (Gas)	1-888-482-4950	(Jim Coe)
AT&T (Telephone)	268-2008	(Jason Edwards)
City of Wichita Water	262-6000	(Greg Lalley)
City of Wichita Sewer	268-4555	(LaDonna Lawrenz)

2. All saw cuts shown on the plans shall not be paid for directly, but shall be considered subsidiary to other items of the contract. The Depth of the cut shall be full depth. Sawed joint to facilitate removal within three (3) feet of existing joints will not be permitted and for such instances the limits of removal shall extend to the existing joint. Such saw cuts will not be paid for directly and this cost shall be considered as subsidiary to the project costs.

3. Rubble from the removal of miscellaneous structures and excess excavation which is to be wasted shall be disposed of on sites to be provided by the Contractor. These sites shall be approved by the Engineer as to suitability, appearance and site location. Locations that, in the opinion of the Engineer, will leave an unsightly appearance will not be approved.

All disposal sites must be approved by the Kansas Department of Health and Environment. Material either stockpiled or disposed of in a flood plain would require a Kansas State Board of Agriculture permit. Any material dumped in waters of the United States or wetlands is subject to U.S. Corps. of Engineers permitting regulations. Any material buried or stockpiled beyond approved construction limits would require additional archaeological investigations unless buried in a previously approved borrow location.

4. Trees and shrubs in public right-of-way which are in direct conflict with proposed new construction shall be removed by the Contractor with the Engineer's approval. Trees and shrubs which are not in direct conflict with proposed new construction shall be saved and protected from damage.

5. The Contractor shall be responsible for preserving property irons. The Contractor will be required to reestablish any property irons which are damaged or destroyed by his construction operations. Such irons shall be reestablished by a licensed land surveyor in accordance with state laws.

CONSTRUCTION PLANS FOR PROPOSED 111TH STREET WEST

THE CITY OF WICHITA
SEDGWICK COUNTY, KANSAS

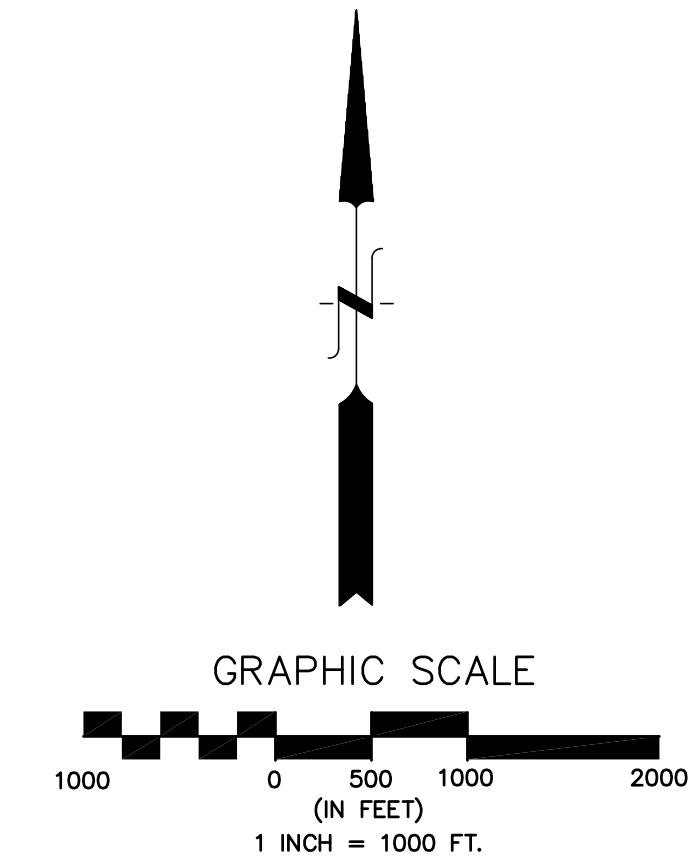
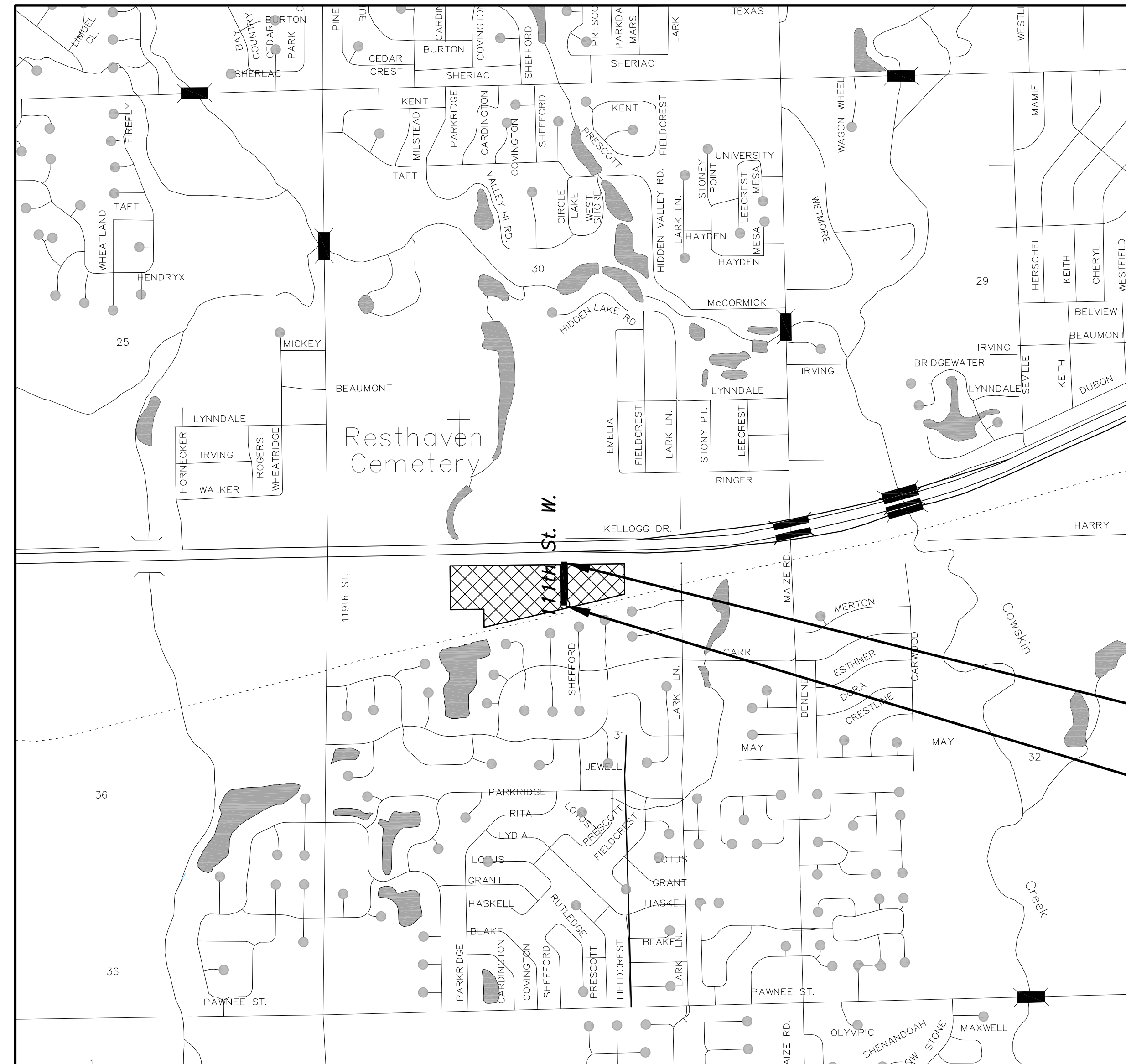
Gary Janzen, P.E., City Engineer

PAVING PROJECT

CITY OF WICHITA PROJECT NO. 472-85228
OCA NO. 766342

INDEX OF SHEETS

1	TITLE SHEET
2	TYPICAL SECTIONS & GENERAL NOTES
3	PLAN SHEETS
4	CUL-DE-SAC DETAILS
5	INTERSECTION DETAILS
6-8	PAVING DETAILS
9-10	SEWER DETAILS
11	SWPPP
12-16	SOIL EROSION BMP's
17	SUMMARY OF QUANTITIES
18-19	TRAFFIC CONTROL
20-24	CROSS SECTIONS
25	COORDINATE POINTS SHEET



IMPROVEMENT DISTRICT BOUNDARY

Sta. 5+91.73, END PROJECT
PROJ: 472-85228

Sta. 0+16.66, BEGIN PROJECT
PROJ: 472-85228

NOTE:
Local Traffic to be carried through construction.

BENCHMARKS

- NAVD 88
- BM#1 "□" Cut on W. Curb Return 111th St. West, 10' N. of S. PC, S. side of Kellogg
Elev. 1330.32
- BM#2 RR Spike in W. face PP, 35' E. of CL 111th St. West, +/- 400' S. of CL Access Road, S. side of Kellogg
Elev. 1331.42



JUNE 2016

POE & ASSOCIATES, INC.
CONSULTING ENGINEERS
544 West Douglas Avenue • Wichita, KS 67203
Phone 316/685-4114 • FAX 316/685-4444