

BENCHMARKS:
 CITY OF WICHITA BENCHMARK DISK
 34.9' S. & 31.2' W. OF THE SW COR.,
 NW1/4, SEC. 2, TWP. 27-S, R-1-W.
 ELEV. = 1327.57 NAVD88

CITY OF WICHITA BENCHMARK DISK
 26.2' S. & 46.1' W. OF THE NW COR.,
 NW1/4, SEC. 2, TWP. 27-S, R-1-W.
 ELEV. = 1330.50 NAVD88

CITY OF WICHITA BENCHMARK DISK
 0.9' E. & 29' N. OF THE NE COR.,
 NW1/4, SEC. 2, TWP. 27-S, R-1-W.
 ELEV. = 1325.19 NAVD88

Curve #40
 Curve Data Based on Face of Curb
 Rad. = 250' Delta = 25°28'24" Tangent = 56.51'
 Arc = 111.16' L.C. = 110.24' Def./Ft. = 6.87478 Min.

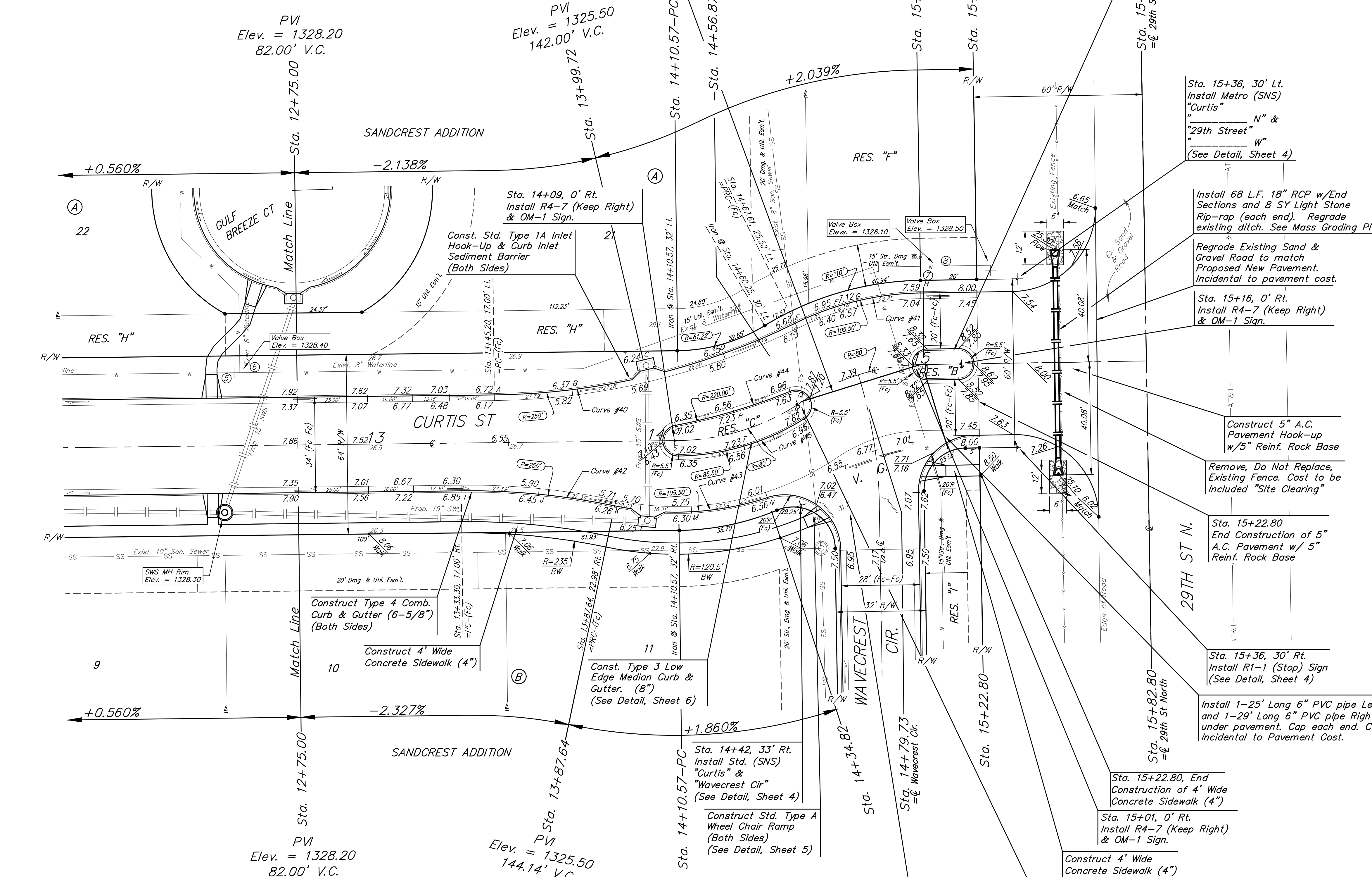
Station	Arc	Chord 8' Rt.	Defl.	Total Defl.
A	-	-	0°00'00"	0°00'00"
B	27.79'	26.88'	3°11'03"	3°11'03"
C	27.79'	26.88'	3°11'03"	6°22'06"
D	27.79'	26.88'	3°11'03"	9°33'09"
E	27.79'	26.88'	3°11'03"	12°44'12"

Curve #41
 Curve Data Based on Face of Curb
 Rad. = 105.5' Delta = 25°12'20" Tangent = 23.59'
 Arc = 46.42' L.C. = 46.04' Def./Ft. = 16.28967 Min.

Station	Arc	Chord 8' Lt.	Defl.	Total Defl.
E	-	-	0°00'00"	0°00'00"
F	14.82'	15.93'	4°01'25"	4°01'25"
G	8.39'	9.02'	2°16'40"	6°18'05"
H	23.21'	24.92'	6°18'05"	12°36'10"

Curve #42
 Curve Data Based on Face of Curb
 Rad. = 250' Delta = 12°33'16" Tangent = 27.50'
 Arc = 54.78' L.C. = 54.67' Def./Ft. = 6.87538 Min.

Station	Arc	Chord 8' Rt.	Defl.	Total Defl.
I	-	-	0°00'00"	0°00'00"
J	27.39'	26.50'	3°08'19"	3°08'19"
K	27.39'	26.50'	3°08'19"	6°16'38"



Curve #43
 Curve Data Based on Face of Curb
 Rad. = 105.5' Delta = 29°55'07" Tangent = 28.19'
 Arc = 55.08' L.C. = 54.47' Def./Ft. = 16.29554 Min.

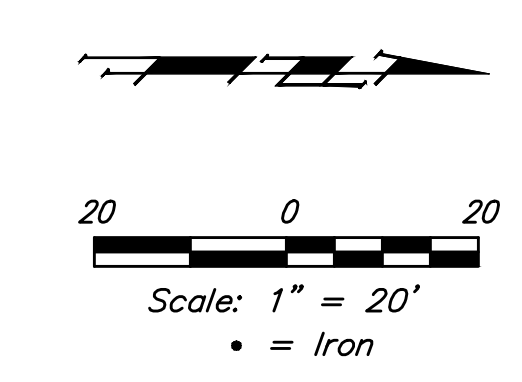
Station	Arc	Chord 8' Rt.	Defl.	Total Defl.
K	-	-	0°00'00"	0°00'00"
L	9.23'	9.93'	2°30'24"	2°30'24"
M	18.31'	19.68'	4°58'23"	7°28'47"
N	27.54'	29.55'	7°28'46"	14°57'33"

Curve #44
 Curve Data Based on Face of Curb
 Rad. = 220' Delta = 11°07'51" Tangent = 21.44'
 Arc = 42.74' L.C. = 42.67' Def./Ft. = 7.81294 Min.

Station	Arc	Chord 5.5' Rt.	Defl.	Total Defl.
O	-	-	0°00'00"	0°00'00"
P	21.37'	21.90'	2°46'58"	2°46'58"
Q	21.37'	21.90'	2°46'57"	5°33'55"

Curve #45
 Curve Data Based on Face of Curb
 Rad. = 85.5' Delta = 31°43'47" Tangent = 24.30'
 Arc = 47.34' L.C. = 46.75' Def./Ft. = 20.10756 Min.

Station	Arc	Chord 5.5' Lt.	Defl.	Total Defl.
R	-	-	0°00'00"	0°00'00"
S	23.67'	22.08'	7°55'57"	7°55'57"
T	23.67'	22.08'	7°55'57"	15°51'54"



Baughman Sandcrest Addition - Phase I
CURTIS ST
 Sta. 12+75.00 to Sta. 15+82.80

Baughman Company, P.A. 315 Ellis St. Wichita, KS 67211 P 316-262-7271 F 316-262-0149
 ENGINEERING | SURVEYING | PLANNING | LANDSCAPE ARCHITECTURE

PROJECT NUMBER 472-85252	DESIGN AEG	DRAWN JAK
REVISIONS:	APPROVED	DATE 7/19/16
SCALE Noted		SHEET 18 OF 66

E:\Projects\Pearl Beach_1202\F860\Engineering\Phase I\Str_1510E318\STR Plans.dwg