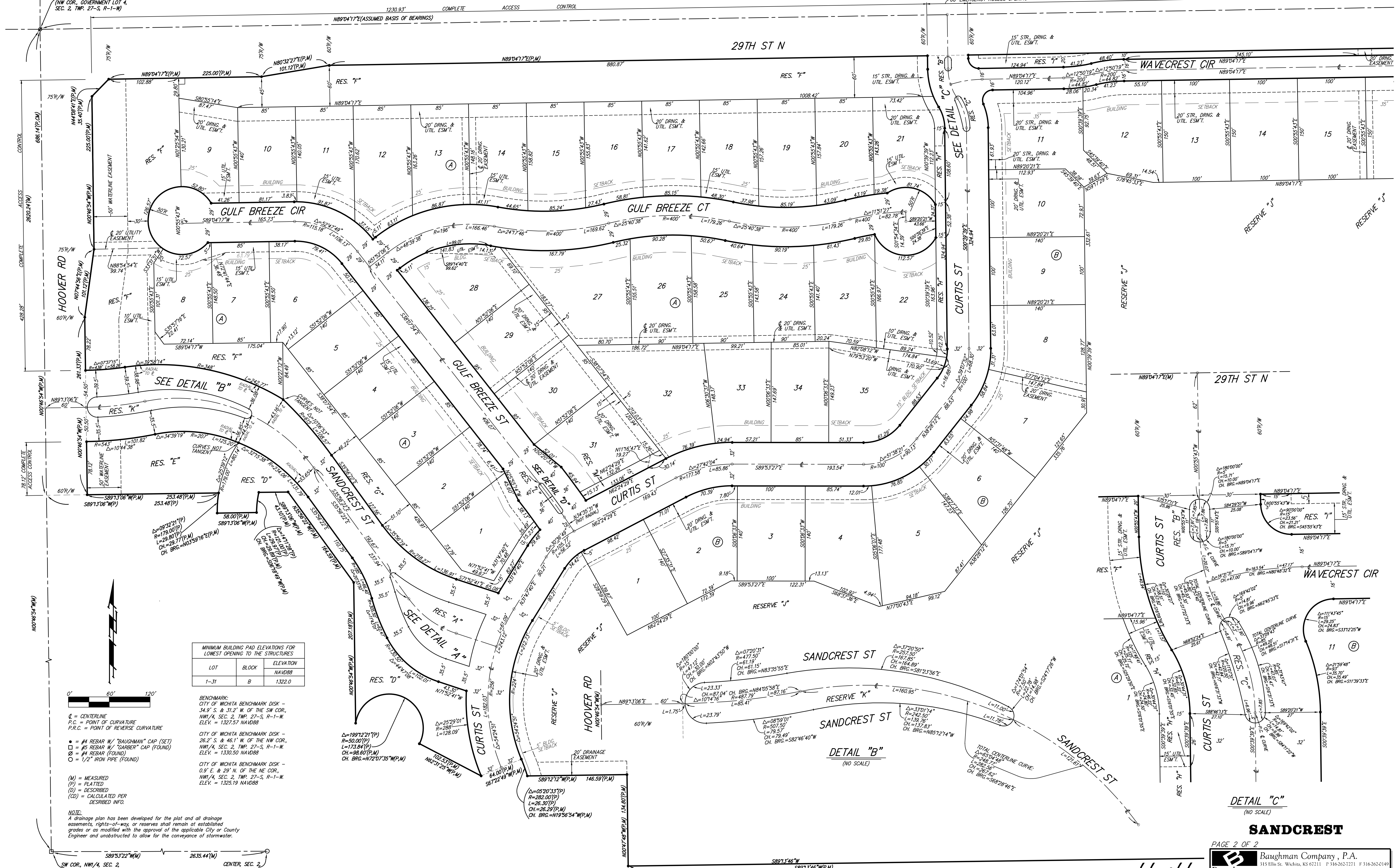


SANDCREST

AN ADDITION TO WICHITA, SEDGWICK COUNTY, KANSAS

* NOTE:
THE EMERGENCY ACCESS
OPENING SHALL BECOME A FULL
MOVEMENT OPENING AT SUCH
TIME AS 29TH ST N IS PAVED.

1276.14' COMPLETE



LOT	BLOCK	ELEVATION NAVD88
1-31	B	1,322.0

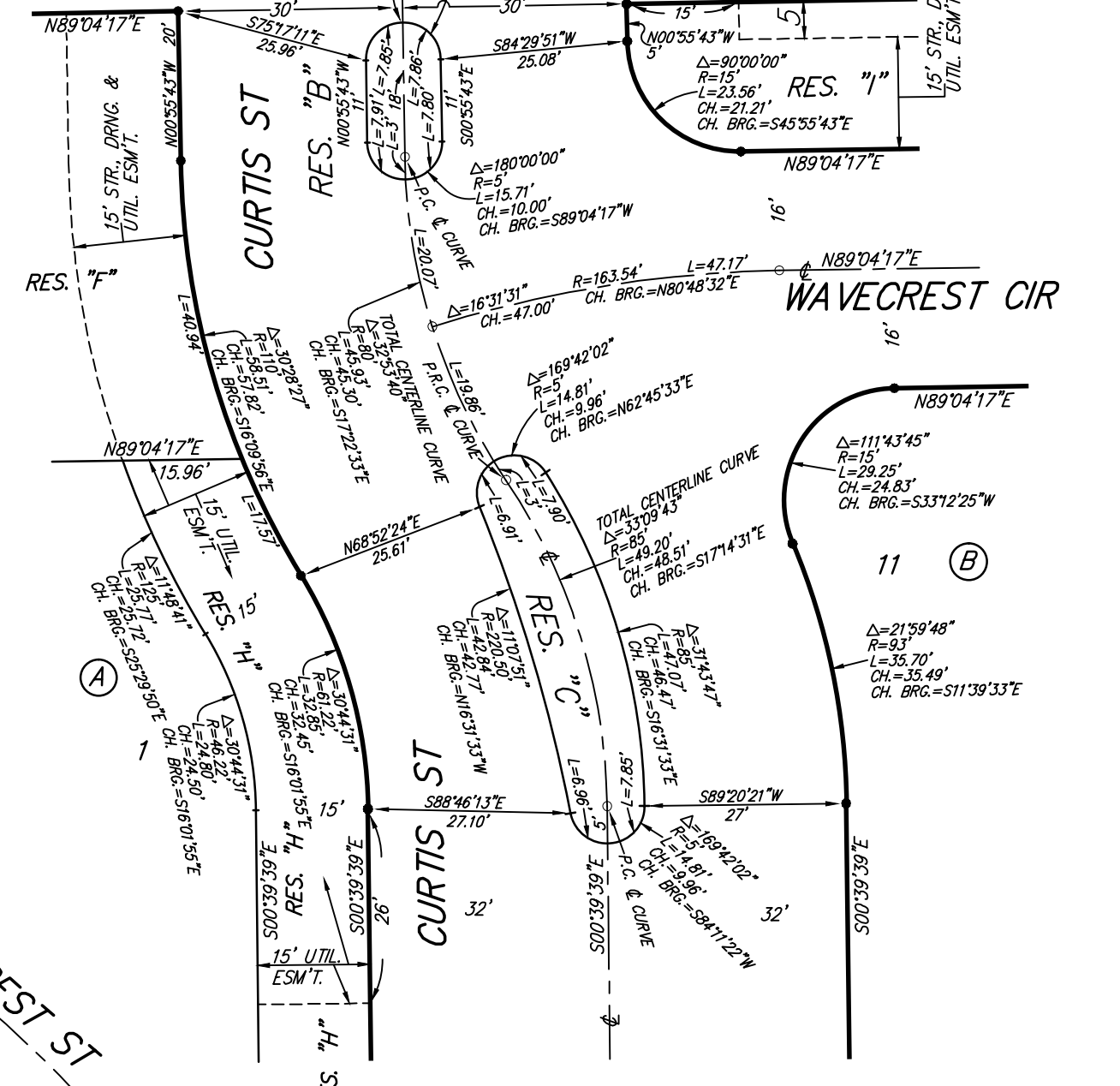
BENCHMARK:
CITY OF WICHITA BENCHMARK DISK -
34.9' S. & 31.2' W. OF THE SW COR.,
NW 1/4, SEC. 2, TWP. 27-S, R-1-W.
ELEV. = 1,327.57 NAVD88

CITY OF WICHITA BENCHMARK DISK -
26.2' S. & 46.1' W. OF THE NW COR.,
NW 1/4, SEC. 2, TWP. 27-S, R-1-W.
ELEV. = 1,330.50 NAVD88

CITY OF WICHITA BENCHMARK DISK -
0.9' E. & 29' N. OF THE NE COR.,
NW 1/4, SEC. 2, TWP. 27-S, R-1-W.
ELEV. = 1,325.19 NAVD88

- CL = CENTERLINE
- P.C. = POINT OF CURVATURE
- P.R.C. = POINT OF REVERSE CURVATURE
- = #4 REBAR W/ "BAUGHMAN" CAP (SET)
- = #5 REBAR W/ "GARBER" CAP (FOUND)
- = #4 REBAR (FOUND)
- = 1/2" IRON PIPE (FOUND)
- (M) = MEASURED
- (P) = PLATTED
- (D) = DESCRIBED
- (CD) = CALCULATED PER DESCRIBED INFO.

NOTE:
A drainage plan has been developed for the plot and all drainage easements, rights-of-way, or reserves shall remain at established grades or as modified with the approval of the applicable City or County Engineer and unobstructed to allow for the conveyance of stormwater.



SANDCREST

PAGE 2 OF 2
Baughman Company, P.A.
315 Ellis St. Wichita, KS 67211 P 316-262-2171 F 316-262-0149