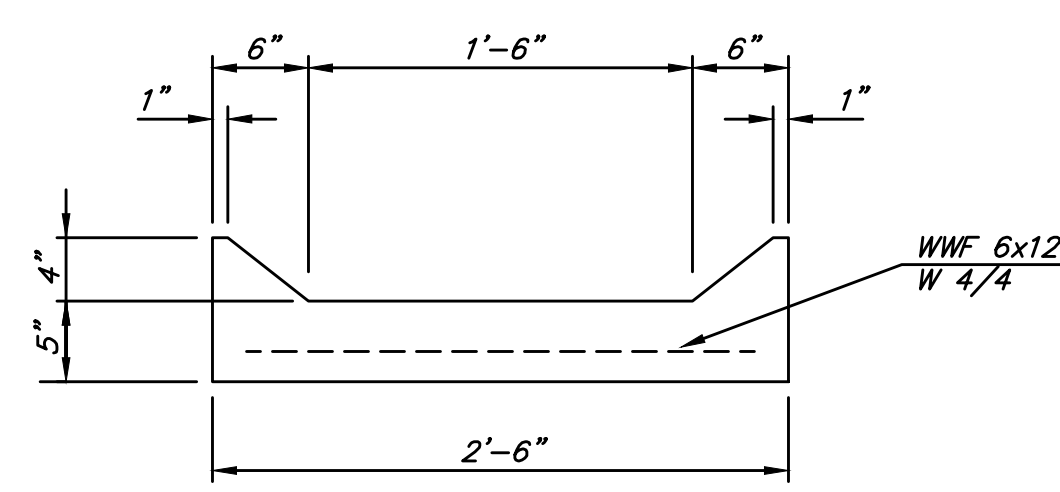


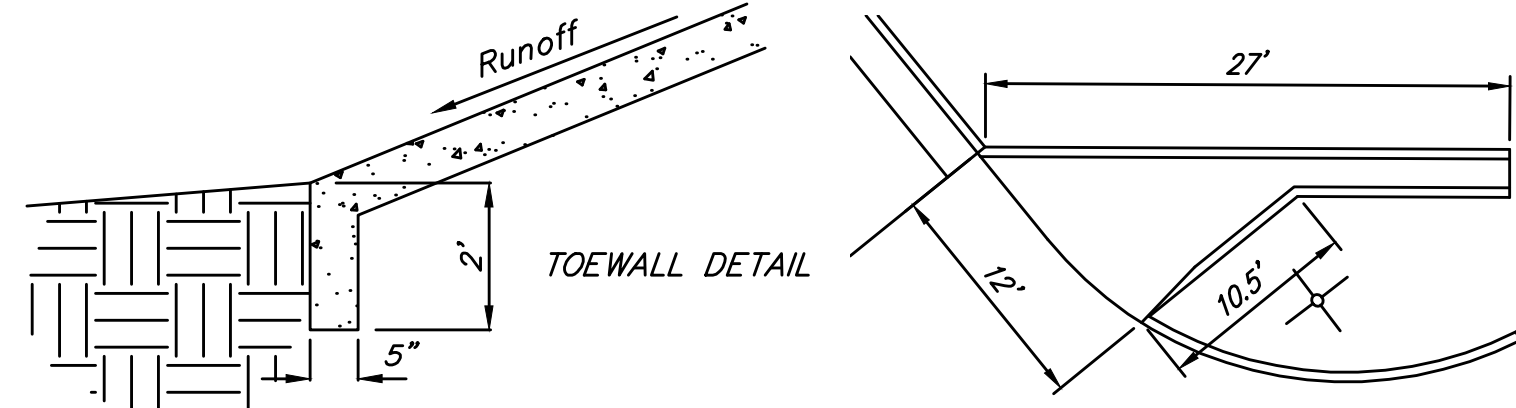
BENCHMARKS:
 Chiseled square on top of catch basin, 43.5' N. & 20.4' W. of the northwest corner of Lot 24, Block B, Vassar Addition.
 Elev. = 1259.55 NGVD29

Chiseled cross on top of catch basin, 48.2' N. & 41.2' W. of the northeast corner of Lot 37, Block B, Vassar Addition.
 Elev. = 1258.46 NGVD29

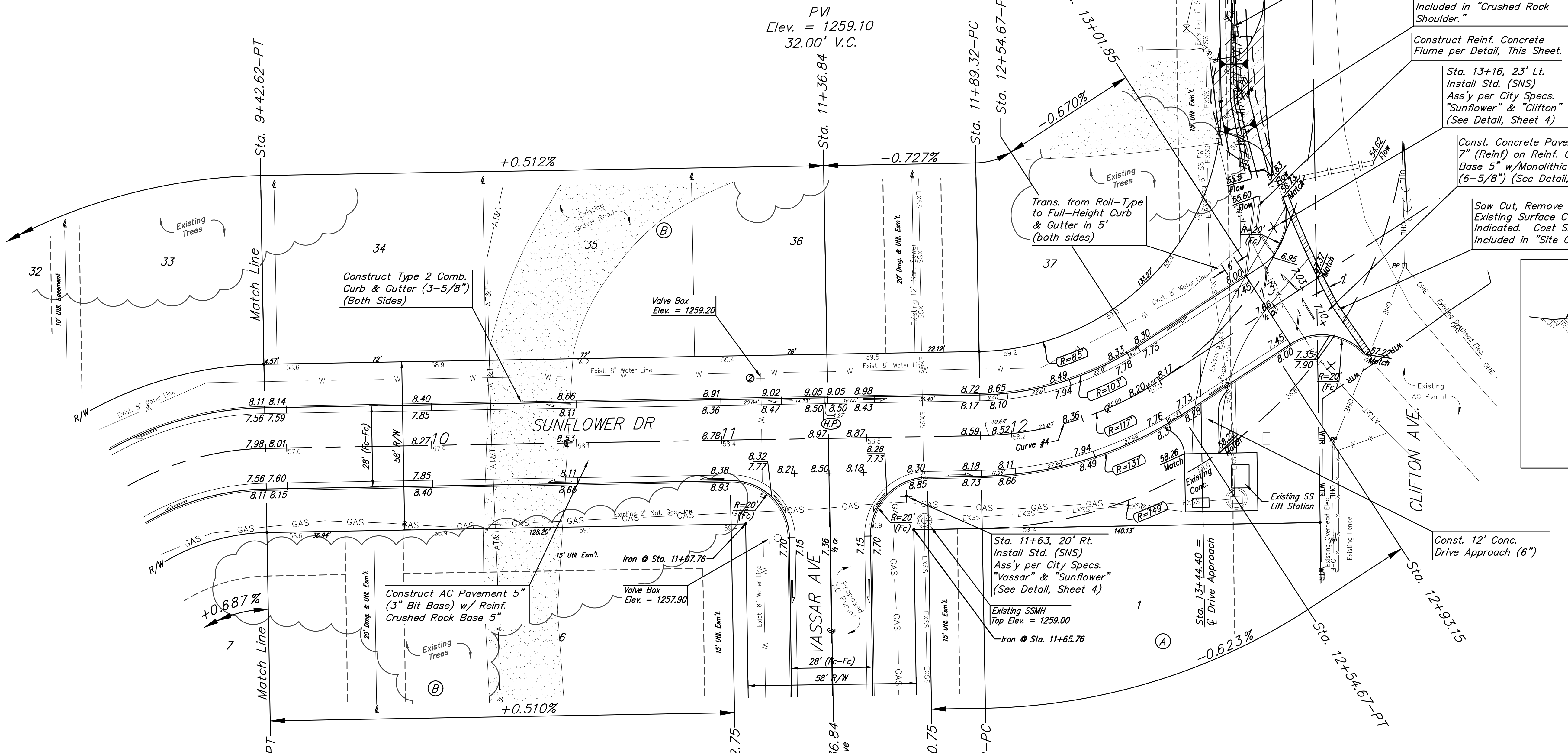
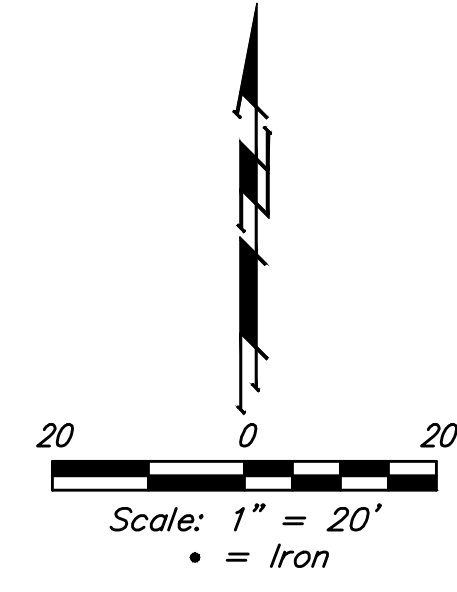
Chiseled cross on walk, most easterly corner, (block corner), Lot 4, Block D, Clifton Cove Addition, 35.2' W. & 8.5' S. of the northwest corner, Lot 20, Block B, Vassar Addition.
 Elev. = 1258.62 NGVD29



CONCRETE FLUME TYPICAL DETAIL

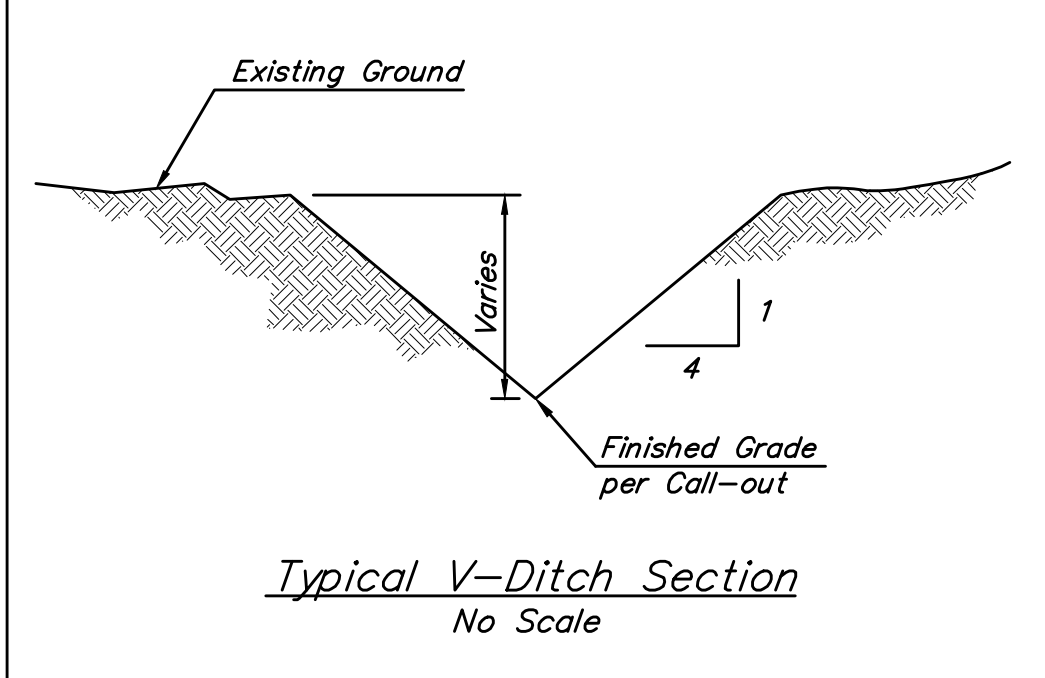


TOEWALL DETAIL



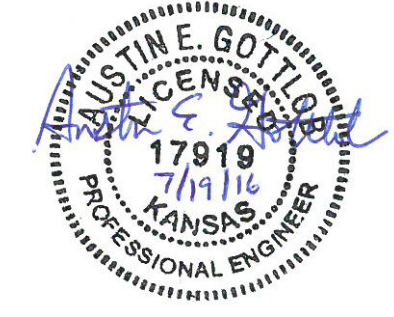
NOTE:
 The Contractor shall maintain access across construction areas on existing gravel road.

Type 2 Comb. Curb & Gutter (3-5/8") to be constructed on the pavement on this sheet. Top of curb elevation are given for full height curb (6-5/8").



Curve #4
 Curve Data Based on Centerline
 Rad. = 117' Delta = 32°00'00" Tangent = 33.55'
 Arc = 65.35' L.C. = 64.50' Def./Ft. = 14.69013 Min.

Station	Arc	Chord		Defl.	Total Defl.
		8' Left	8' Right		
11+89.32	-	-	-	0°00'00"	0°00'00"
12+00.00	10.68'	8.67'	12.68'	2°36'53"	2°36'53"
12+25.00	25.00'	20.26'	29.64'	6°07'16"	8°44'09"
12+50.00	25.00'	20.26'	29.64'	6°07'15"	14°51'24"
12+54.67	4.67'	3.79'	5.55'	1°08'36"	16°00'00"



Baughman Vassar Addition - Phase I
SUNFLOWER
 Sta. 9+42.62 to Sta. 13+01.85

Baughman Company, P.A. 315 Ellis St. Wichita, KS 67211 P 316-262-7271 F 316-262-0149
 ENGINEERING | SURVEYING | PLANNING | LANDSCAPE ARCHITECTURE

PROJECT NUMBER 472-85256	DESIGN AEG	DRAWN JAK
REVISIONS:	APPROVED	DATE 7/05/16
SCALE Noted		SHEET 10 OF 25