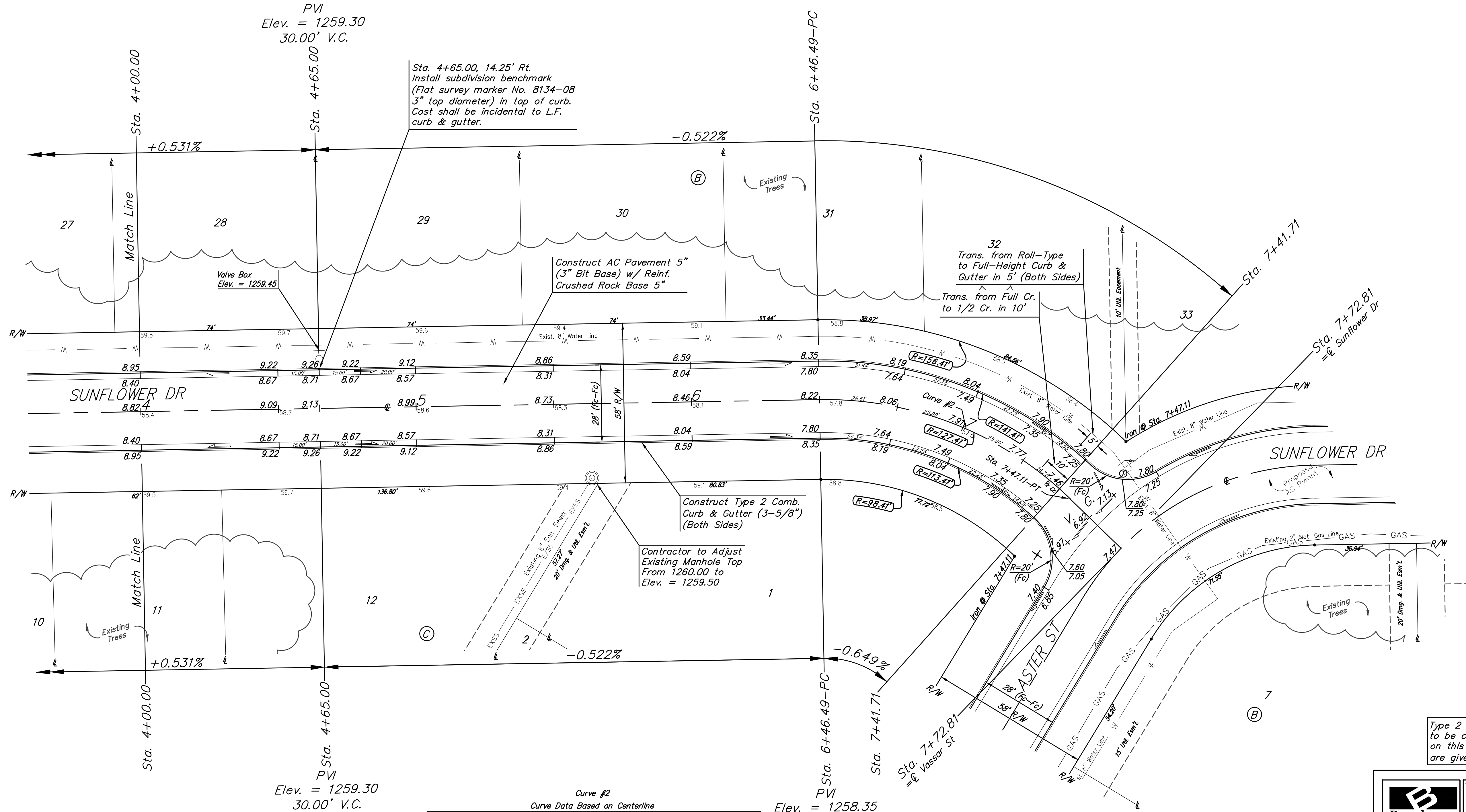
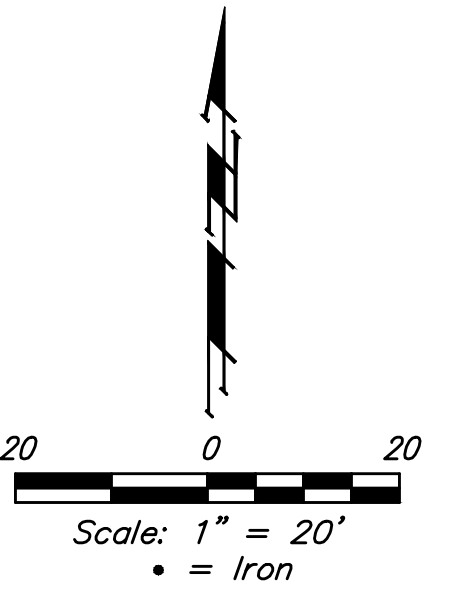


BENCHMARKS:
 Chiseled square on top of catch basin, 43.5' N. & 20.4' W. of the northwest corner of Lot 24, Block B, Vassar Addition.
 Elev. = 1259.55 NGVD29

Chiseled cross on top of catch basin, 48.2' N. & 41.2' W. of the northeast corner of Lot 37, Block B, Vassar Addition.
 Elev. = 1258.46 NGVD29

Chiseled cross on walk, most easterly corner, (block corner), Lot 4, Block D, Clifton Cove Addition, 35.2' W. & 8.5' S. of the northwest corner, Lot 20, Block B, Vassar Addition.
 Elev. = 1258.62 NGVD29



SUBDIVISION BENCH MARKS		
Street & Station	Location Description	Elevation
Sunflower Dr 4+65.00, 14.25' Rt.	Adjacent to Fire Hydrant at SE Corner of Lot 28, Block B	
Vassar Ave 4+09.51, 14.25' Lt.	Adjacent to Fire Hydrant at S End of SW Return Sunflower Dr & Vassar Ave.	

Curve #2
 Curve Data Based on Centerline
 Rad. = 127.41' Delta = 89°51'52" Tangent = 127.11'
 Arc = 100.62' L.C. = 179.97' Def./Ft. = 26.79322 Min.

Station	Arc	Chord		Defl.	Total Defl.
		8' Left	8' Right		
6+46.49	-	-	-	0°00'00"	0°00'00"
6+50.00	3.51'	8.17'	5.77'	1°34'03"	1°34'03"
6+75.00	25.00'	57.86'	40.82'	11°09'49"	12°43'52"
7+00.00	25.00'	57.86'	40.82'	11°09'50"	23°53'42"
7+25.00	25.00'	57.86'	40.82'	11°09'50"	35°03'32"
7+41.71	16.71'	38.81'	27.38'	7°27'43"	42°31'15"
7+47.11	5.40'	12.57'	8.87'	2°24'41"	44°55'56"

Type 2 Comb. Curb & Gutter (3-5/8") to be constructed on the pavement on this sheet. Top of curb elevation are given for full height curb (6-5/8").

		Vassar Addition - Phase I	
		SUNFLOWER	
Sta. 4+00.00 to Sta. 7+41.71		Baughman Company, P.A. 315 Ellis St. Wichita, KS 67211 P 316-262-7271 F 316-262-0149 ENGINEERING SURVEYING PLANNING LANDSCAPE ARCHITECTURE	
PROJECT NUMBER 472-85256	DESIGN AEG	DRAWN JAK	APPROVED DATE 7/05/16
REVISIONS:	SCALE Noted SHEET		

