

# GENERAL NOTES:

- The Contractor shall comply with all applicable safety regulations. All construction shall be completed following current City Standard Specifications and Special Provisions.
- Contractor will be required to provide notice to utility companies a minimum of seventy-two (72) hours prior to any excavation, as follows:  
 Kansas One-Call 687-2470  
 The Contractor must notify the following in case of an emergency:  
 AT&T 1-800-246-8464  
 Black Hills Energy 1-800-694-8989  
 City of Wichita Water 1-316-268-4555  
 City of Wichita Sewer 1-316-268-4073  
 City of Wichita Stormwater 1-316-268-4090  
 City of Wichita Traffic 1-316-268-4034  
 Cox Communications 1-888-249-3530  
 Kansas Gas Service 1-888-462-4950  
 Westar Energy 1-800-544-4857
- Utility service lines, poles, etc. are to be adjusted as necessary by others prior to construction unless the plans specifically call for their adjustment by the Contractor or unless the plans specifically identify a utility to be adjusted by its owner during construction. Existing utilities and their location, as shown on the plans, represent the best information obtainable for design. The Contractor will be required to work around existing utilities within the right-of-way which do not conflict with proposed construction.
- Rubble from the removal of miscellaneous structures and excess excavation which is to be wasted shall be disposed of on sites to be provided by the Contractor. These sites shall be approved by the Engineer as to suitability, appearance and site location. Locations, in the opinion of the Engineer, that will leave an unsightly appearance will not be approved. All disposal sites must be approved by the Kansas Department of Health and Environment. Material either stockpiled or disposed of in a flood plain would require a Kansas State Board of Agriculture permit. Any material dumped in waters of the United States or wetlands is subject to U.S. Corps of Engineers permitting regulations. Any material buried or stockpiled beyond approved construction limits would require additional archaeological investigations unless buried in a previously approved borrow location.
- Trees and shrubs in public right-of-way which are in direct conflict with proposed new construction shall be removed by the Contractor with the Engineer's approval. Trees and shrubs which are not in direct conflict with proposed new construction shall be saved and protected from damage.
- The Contractor shall give all property owners and/or tenants of developed property abutting the construction of this project a minimum of ten (10) days notice prior to start of construction.
- The Contractor shall be responsible for preserving property irons. The Contractor will be required to re-establish any property irons which are damaged or destroyed by his construction operations. Such irons shall be re-established by a licensed land surveyor in accordance with state laws.
- The Water Distribution Division shall field locate water valve one time during construction when requested by the Contractor. It shall be the Contractor's responsibility to preserve such field locations during the construction process. Water valves, valve boxes or fire hydrants damaged during construction shall be repaired by Contractor at his own expense. Valve boxes and water meters within the project limits shall be adjusted to match field grades.
- The Contractor shall notify the consultant engineer and Tom Mason with the City at 316-268-4574 with the anticipated construction start date and notify them of project completion. Staking and inspection for this project will be the responsibility of the Contractor.
- If traffic is impacted by construction, a traffic control plan must be submitted and approved by the City Traffic Engineer, Brian Coon at [traffic@wichita.gov](mailto:traffic@wichita.gov) before construction can begin. The Contractor shall be responsible for all traffic control measures to facilitate construction. All construction zone markings and signage shall conform to the latest version of Manual on Uniform Traffic Control Devices (MUTCD) as published by the US Dept. of Transportation, Federal Highway Administration. All costs associated with construction markings and signage shall be the Contractors responsibility.
- All elevations shown are U.S.G.S. Datum (NAVD 88).
- All areas disturbed during construction that will not be under proposed pavement shall be restored to match existing conditions.

- A portion of excess excavated material shall be mounded around manholes which extend more than one (1) foot above the existing ground. Such mound shall be constructed with new development a six (6) foot diameter flat top with 4 to 1 side slopes down to the original ground. The elevation of the flat top of the mound shall be 0.4 foot below the top to the manhole.
- Geotechnical report available upon request.
- Contractor shall limit the extent of trench openings overnight and weekends to less than 50 feet.
- Contractor shall provide positive drainage away from all manhole covers.
- City maintenance of storm sewer ends at right-of-way last structure within easement or right-of-way line.
- Any sidewalk, drive approach, or street pavement removed to construct project must have a pavement cut permit and be replaced by the City contractor. Permits can be obtained by calling 316-268-4501 or 316-268-4480.
- The inspecting firm shall submit to the City Stormwater Maintenance Division a digital copy of the CCTV inspection of the conduits and structures following construction. The digital file formation shall be compatible with the City input template. A copy of the template is available upon request at 316-268-4090.
- All existing and proposed erosion control measures including silt fencing, erosion control mat, straw bales, inlet barriers, and const. entrance shall be maintained throughout construction by the contractor and until project is accepted by the City of Wichita. The on-site engineer shall complete weekly reports on the status of erosion control measures. The contractor shall be required to comply with maintenance and/or replacement of erosion control measures as determined by the on-site engineer until project is accepted by City of Wichita. Maintenance and/or replacement of erosion control measures to be paid by L.S. bid item "Site Restoration".
- All excess excavation shall remain on-site and shall be stockpiled or spread at a location determined by the engineer.
- All areas disturbed during construction that will not be under pavement shall be seeded, mulched, and fertilized as follows (Permanent Seeding):  
 Seed: Kansas Premium Fescue Blend: 8 lbs./1000 sq. ft.  
 Mulch: Prairie Hay: 2 tons/acre  
 Fertilizer: 12-24-12: 850 lbs./acre  
 All costs associated with seeding, mulching, and fertilizing shall be included in bid item "Seeding". All seeding operations shall conform to City of Wichita Standard Specifications.
- The Contractor shall not begin work on the project until the Project Inspector is assigned and on site. Any work completed without inspection will be required to be uncovered for inspection at the Contractor's expense.
- Storm sewer will be a private system. Maintenance and inspection will be the owners responsibility, see the O&M manual developed for this system.

## Benchmarks

BM #1: "X" Chiseled on Top of Concrete, south side of 21st St. N. 82.70' S and 22.29' E of the SE corner of Lot 1, Block A, Perfekta Addition.  
 Elev. = 1310.76 (NAVD 88)

BM #2: Top of Mag nail. 216.90' S and 52.57' E of the NE corner of Lot 1, Block A, Perfekta Addition.  
 Elev. = 1313.31 (NAVD 88)

**AS BUILT PLANS**  
 Contractor: Ewertz Const.  
 Inspector: David Vancycle, Baughman Co.  
 pdf's by: KEK, 7/6/16

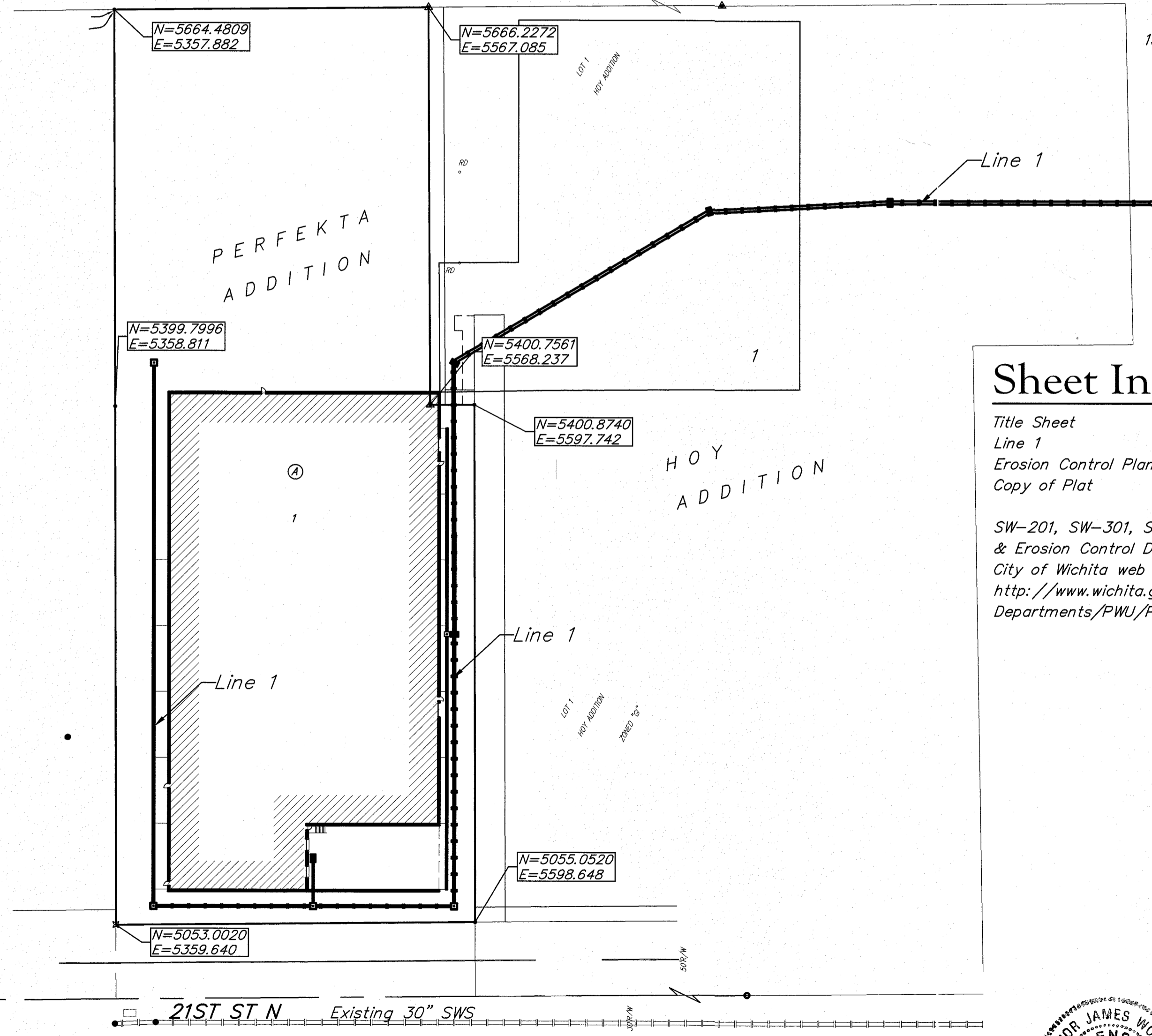
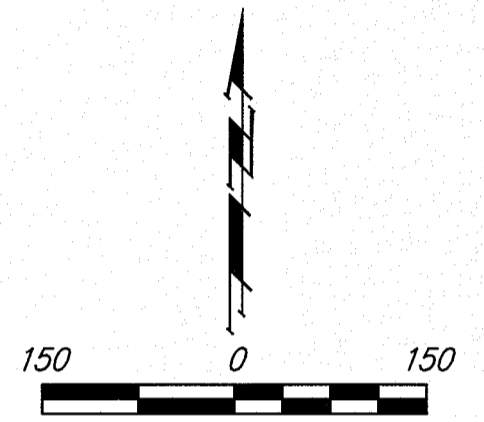
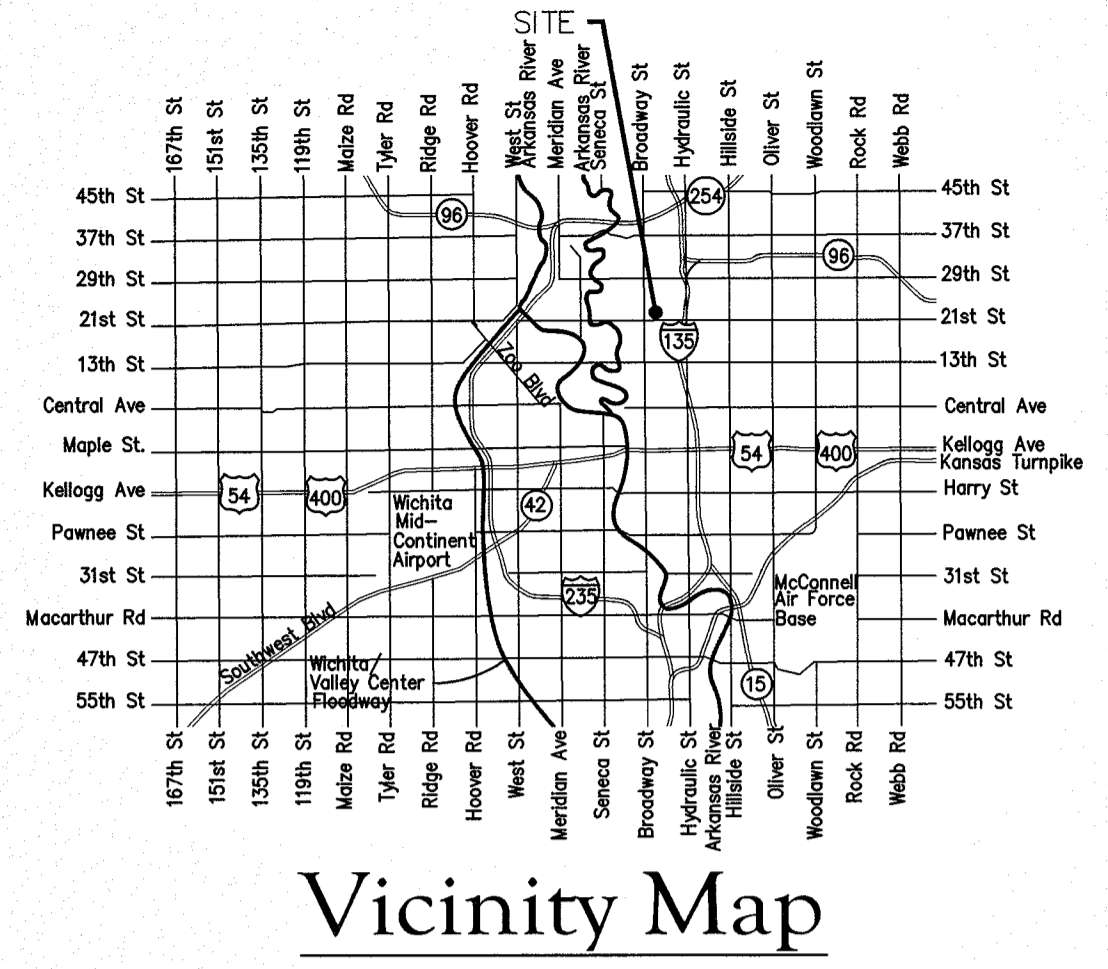
# STORM SEWER IMPROVEMENTS

to serve

## PERFEKTA ADDITION

### CITY OF WICHITA, KANSAS

Gary Janzen, P.E. City Engineer  
 Project Number  
 0278 PPD (607861)



## Sheet Index

Title Sheet	1
Line 1	2-5
Erosion Control Plan	6
Copy of Plat	7

SW-201, SW-301, SW-303, SW-401  
 & Erosion Control Details available at  
 City of Wichita web site at  
<http://www.wichita.gov/Government/Departments/PWU/Pages/Regulations.aspx>

**Stormwater Certification:**  
 New Development and Redevelopment

These construction plans were prepared in accordance with the current Stormwater Management Regulations as set forth in the City of Wichita's Stormwater Management Ordinance 16.32 and the policies/guidelines presented in the Wichita/Sedgwick County Stormwater Manual.

Disturbed Area = 3.8 ac.  
 Water Quality Treatment: 18R/24R snouts and sump inlets.  
 Detention not required due to 10% rule in City of Wichita Storm Water Manual.  
 Downstream Channel Protection: Not Required.  
 The BMPs used for this development is silt fence and construction entrance.

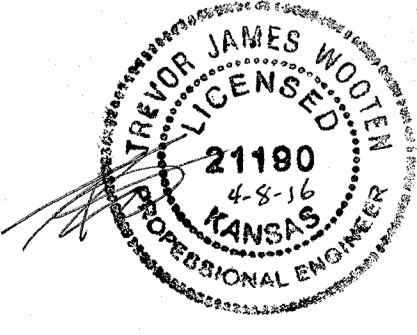
APPROVED AS NOTED  
 BY WICHITA PUBLIC WORKS ENGINEERING  
 AND STORMWATER DIVISION

Engineering *Richard Grif* 4/10/16  
 Stormwater *Joe Hubble PE* 4/10/16

NOTE TO CONTRACTORS

Inspection and testing for this project is to be provided by a Licensed Consulting Engineering Firm under contract with the Owner/Developer. Said inspection to be in accordance with the City of Wichita standard construction engineering practices and certified by a Licensed Professional Engineer in the state of Kansas. No work shall be performed by the Contractor without such inspection nor shall any work be commenced without written authorization by City Engineering. All Construction and Materials shall comply with the current City of Wichita Specifications and Standards and Special Provisions (on file and available at Wichita.gov).

An approved copy of these plans signed by City staff are required on-site.

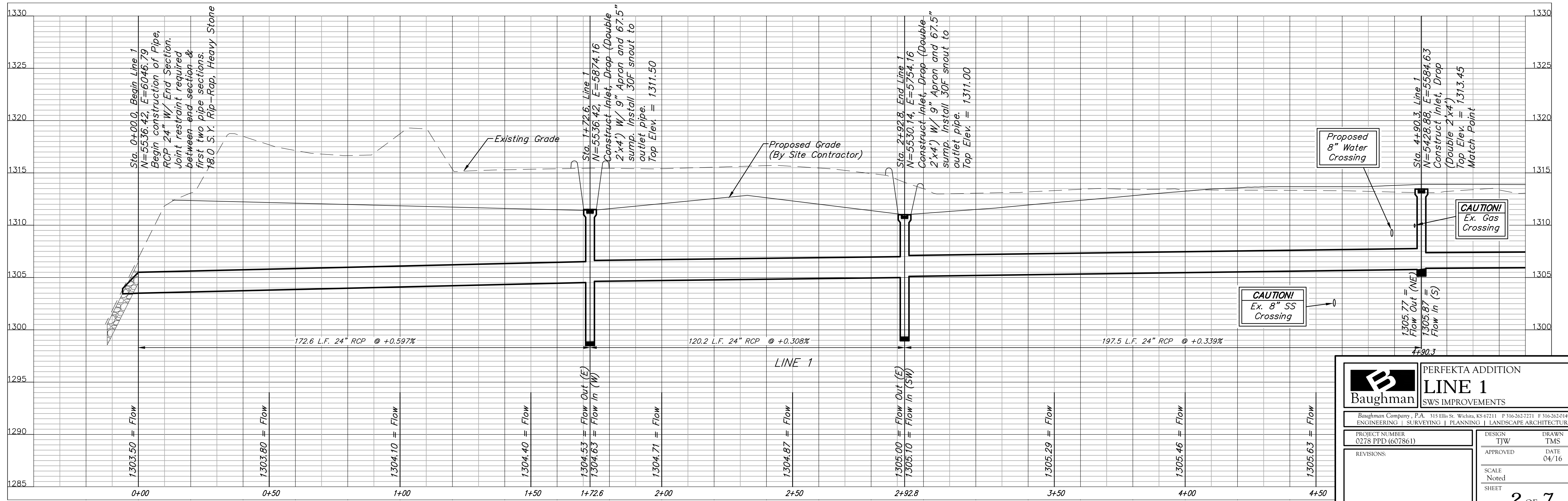
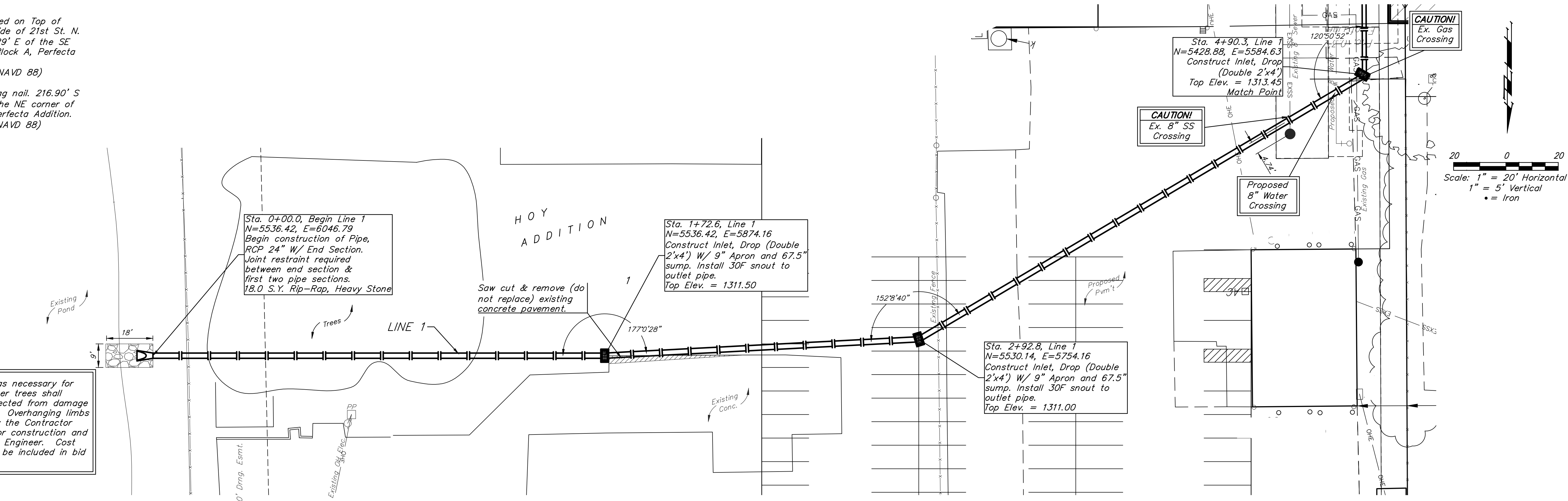


**BENCHMARKS:**

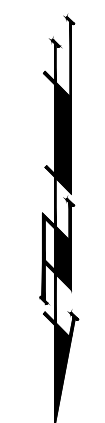
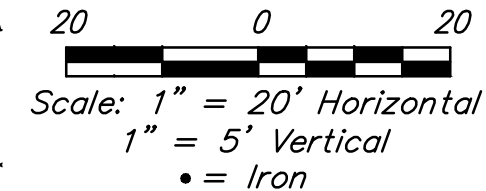
BM #1: "x" Chiseled on Top of Concrete, south side of 21st St. N. 82.70' S and 22.29' E of the SE corner of Lot 1, Block A, Perfecta Addition.  
Elev. = 1310.76 (NAVD 88)

BM #2: Top of Mag nail. 216.90' S and 52.57' E of the NE corner of Lot 1, Block A, Perfecta Addition.  
Elev. = 1313.31 (NAVD 88)

Remove trees only as necessary for construction. All other trees shall remain and be protected from damage during construction. Overhanging limbs shall be trimmed by the Contractor only as necessary for construction and with approval of the Engineer. Cost of tree trimming to be included in bid item "Site Clearing"

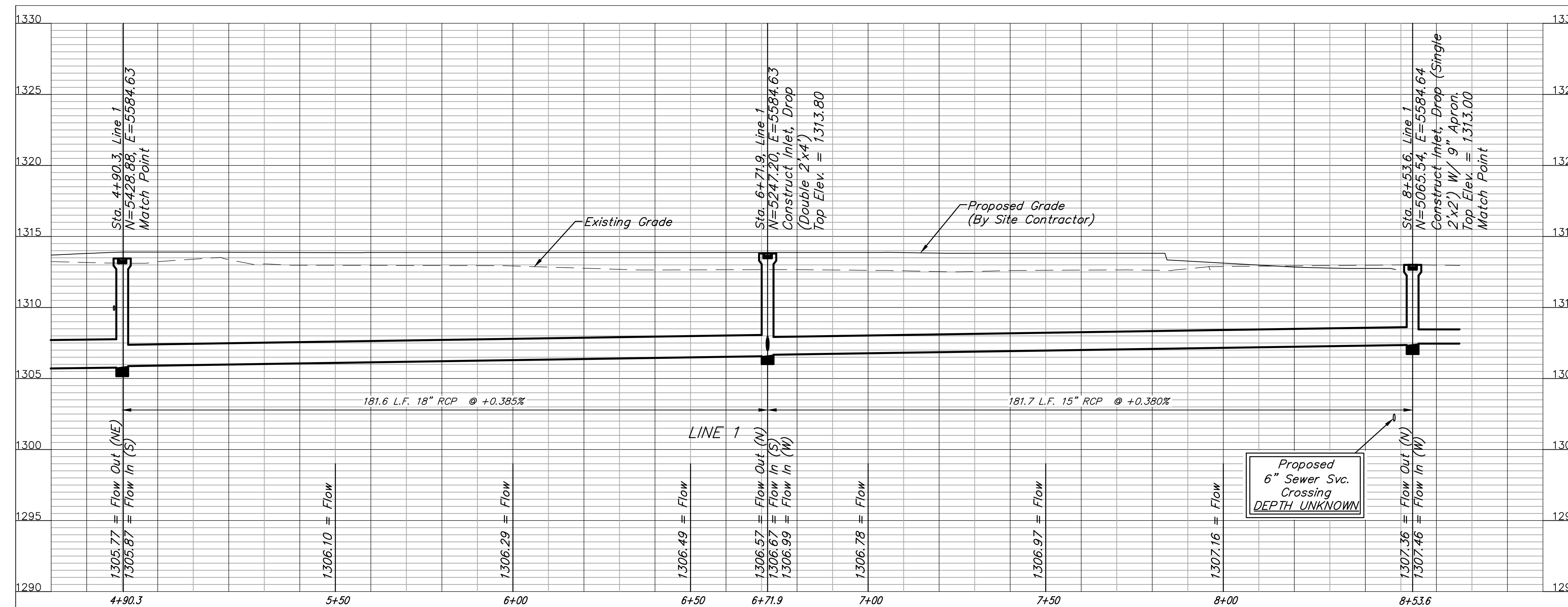
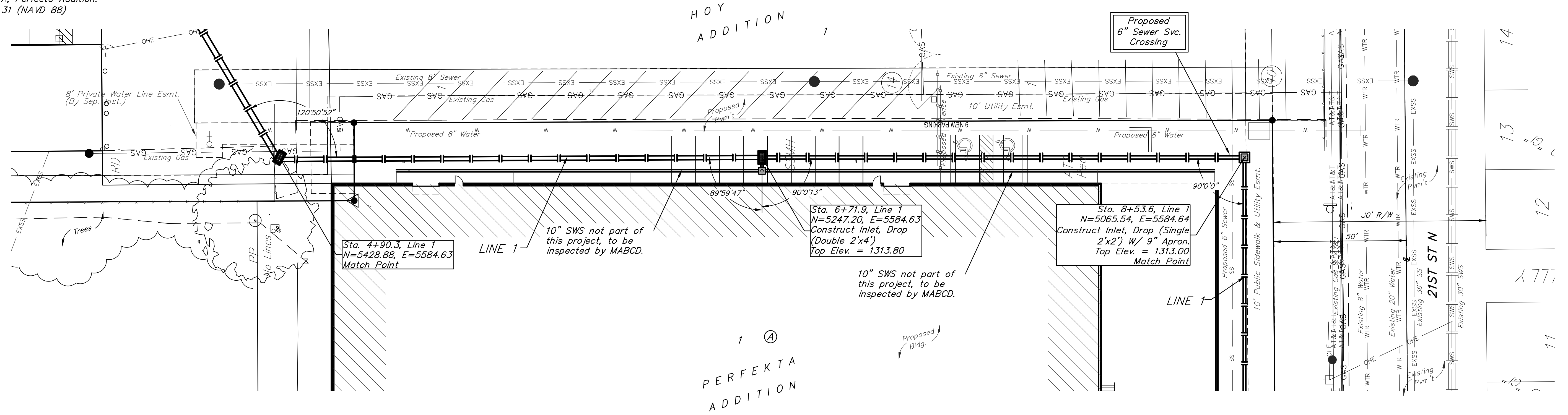
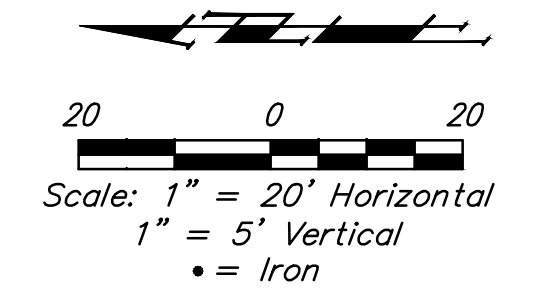


	PERFECTA ADDITION	
	LINE 1	
SWS IMPROVEMENTS		
<small>Baughman Company, P.A. 315 Ellis St., Wichita, KS 67211 P 316-262-7271 F 316-262-0149 ENGINEERING   SURVEYING   PLANNING   LANDSCAPE ARCHITECTURE</small>		
<small>PROJECT NUMBER</small> 0278 PPD (607861)	<small>DESIGN</small> TJW	<small>DRAWN</small> TMS
<small>REVISIONS:</small>	<small>APPROVED</small> 	<small>DATE</small> 04/16
<small>SCALE</small> Noted		
<small>SHEET</small> 		
<h1>2 OF 7</h1>		



**BENCHMARKS:**  
 BM #1: "x" Chiseled on Top of Concrete, south side of 21st St. N. 82.70' S and 22.29' E of the SE corner of Lot 1, Block A, Perfecta Addition. Elev. = 1310.76 (NAVD 88)

BM #2: Top of Mag nail. 216.90' S and 52.57' E of the NE corner of Lot 1, Block A, Perfecta Addition. Elev. = 1313.31 (NAVD 88)

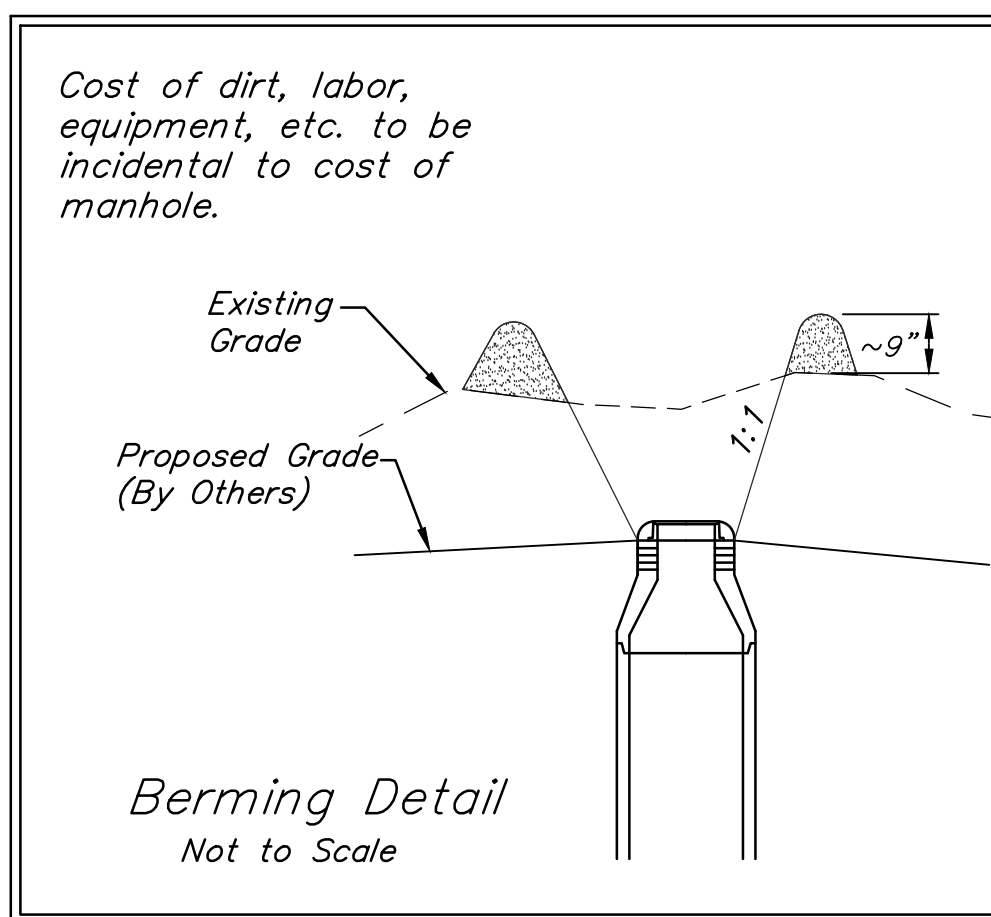
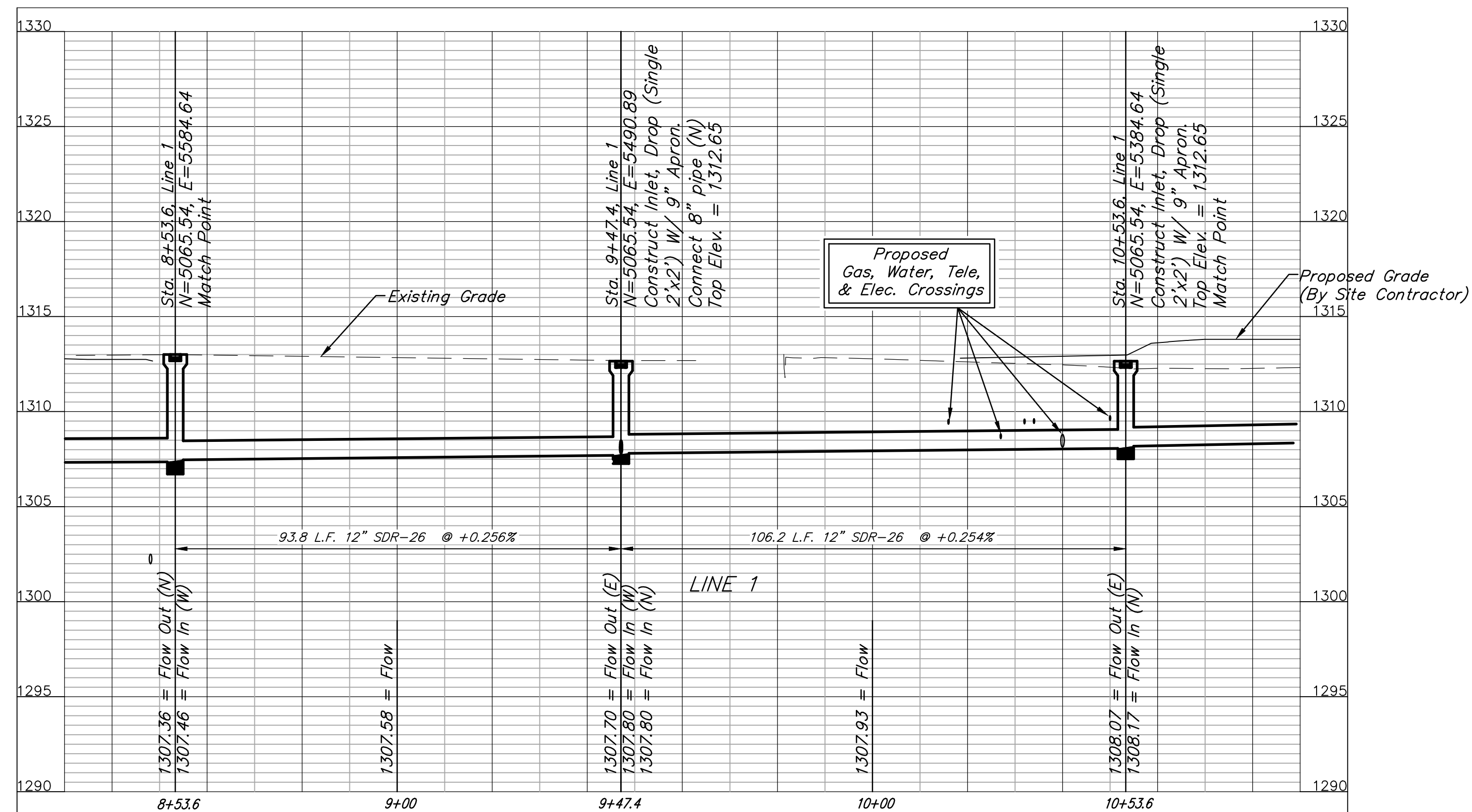
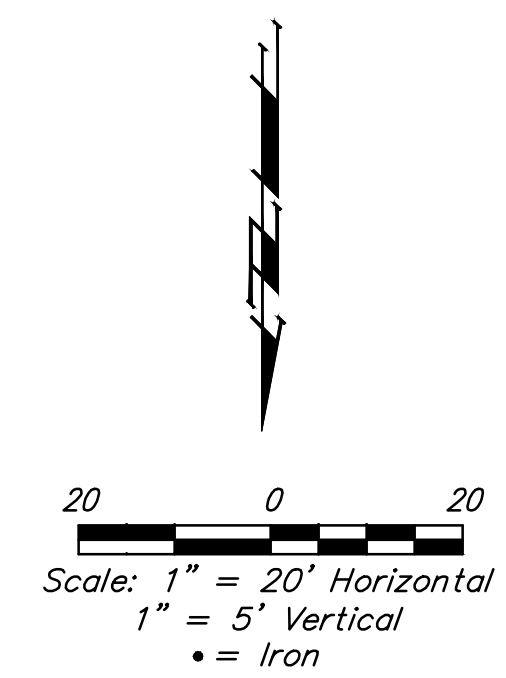
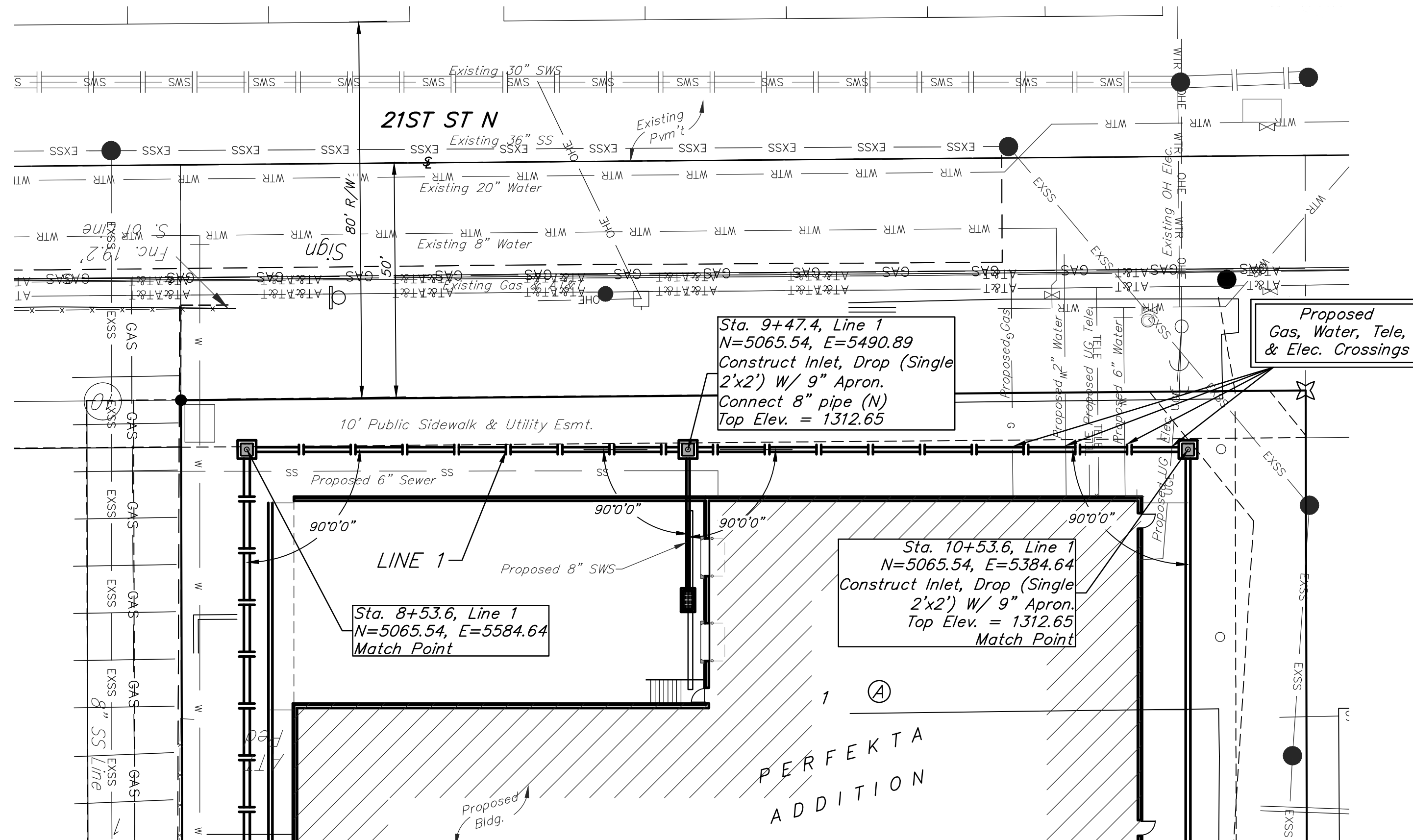


	PERFEKTA ADDITION	
	LINE 1	
SWS IMPROVEMENTS		
<small>Baughman Company, P.A. 315 Ellis St., Wichita, KS 67211 F 316-262-7271 F 316-262-0149        ENGINEERING   SURVEYING   PLANNING   LANDSCAPE ARCHITECTURE</small>		
PROJECT NUMBER 0278 PPD (607861)	DESIGN TJW	DRAWN TMS
REVISIONS:	APPROVED DATE 04/16	SCALE Noted
		SHEET <b>3 OF 7</b>
PPD.dwg		14-07-E095

**BENCHMARKS:**

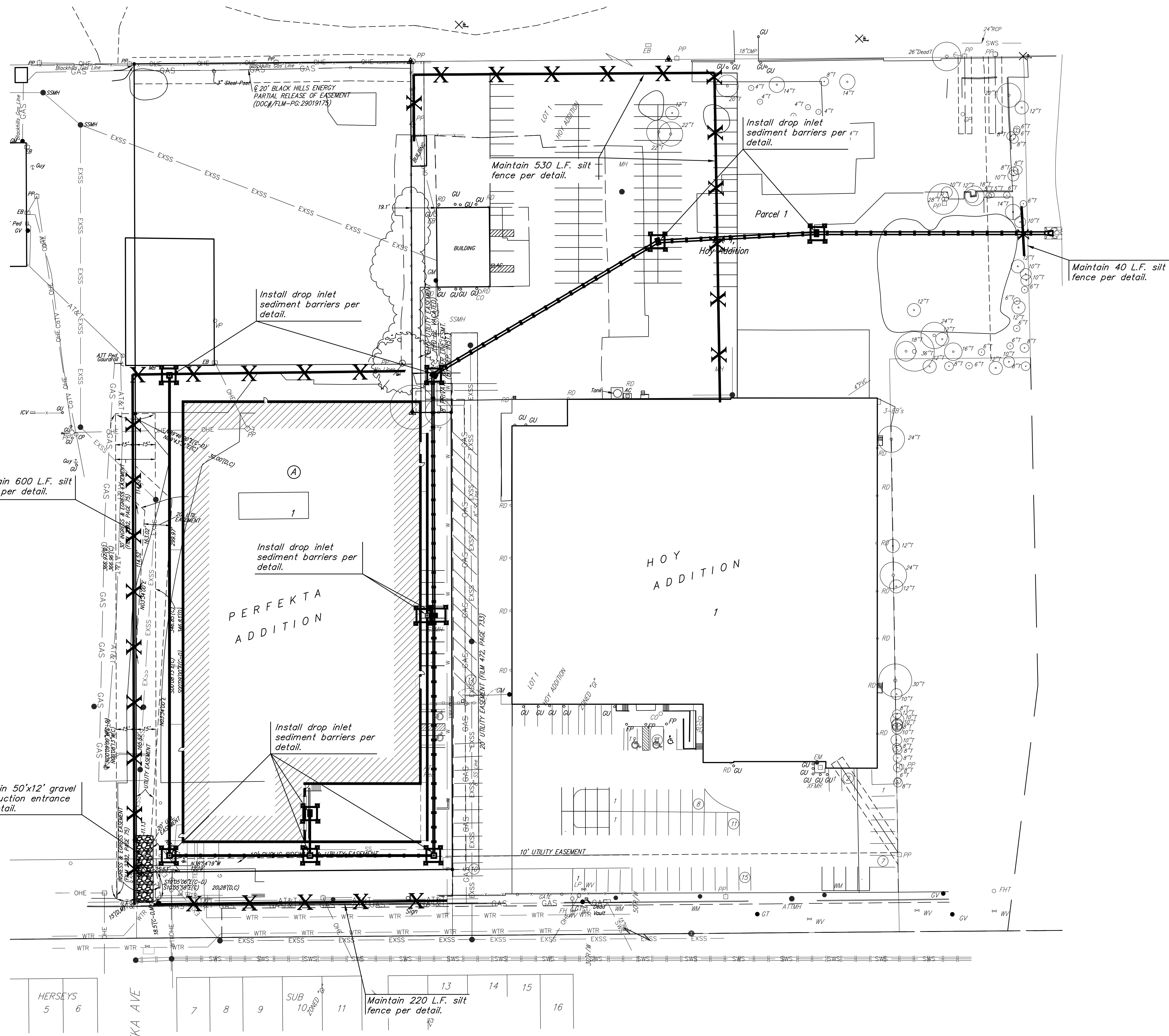
BM #1: "x" Chiseled on Top of Concrete, south side of 21st St. N. 82.70' S and 22.29' E of the SE corner of Lot 1, Block A, Perfecta Addition.  
Elev. = 1310.76 (NAVD 88)

BM #2: Top of Mag nail. 216.90' S and 52.57' E of the NE corner of Lot 1, Block A, Perfecta Addition.  
Elev. = 1313.31 (NAVD 88)



	PERFEKTA ADDITION	
	LINE 1	
SWS IMPROVEMENTS		
<small>Baughman Company, P.A. 315 Ellis St., Wichita, KS 67211 P 316-262-7271 F 316-262-0149 ENGINEERING   SURVEYING   PLANNING   LANDSCAPE ARCHITECTURE</small>		
PROJECT NUMBER 0278 PPD (607861)	DESIGN TJW	DRAWN TMS
REVISIONS:	APPROVED	DATE 04/16
	SCALE Noted	SHEET
	4 OF 7	
PPD.dwg	14-07-E095	

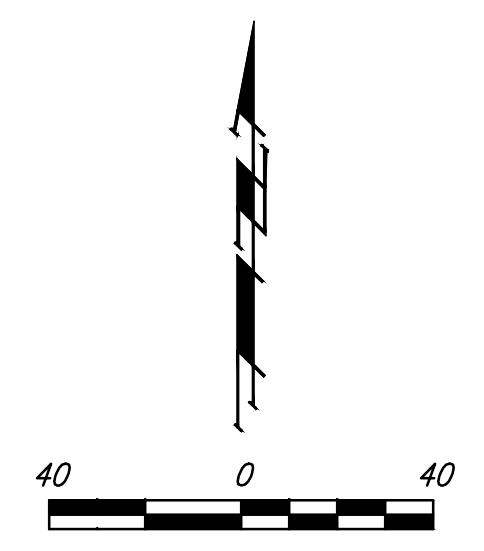




**EROSION CONTROL PLAN LEGEND**  
(Installation Details Found in the SMP2 Plan)

- DROP INLET PROTECTION
- CURB INLET PROTECTION
- DITCH CHECKS
- SILT FENCING
- EROSION CONTROL BERM
- BACK OF CURB PROTECTION
- EROSION CONTROL MAT
- TEMPORARY DITCH

NO SCALE



EROSION CONTROL MEASURE	INSTALL	MAINTAIN	REMOVE
BACK OF CURB PROTECTION (LF)	0	0	0
CONSTRUCTION ENTRANCE (EA)	0	1	0
CURB INLET BARRIER (EA)	0	0	0
DITCH CHECK (EA)	0	0	0
DROP INLET PROTECTION (EA)	10	0	0
EROSION CONTROL (LS)	0	0	0
EROSION CONTROL BERM (LF)	0	0	0
SILT FENCE (LF)	0	1,390	0
EROSION CONTROL MAT (SY)	0	0	0

QUANTITIES ARE FOR INFORMATION ONLY! CONTRACTOR SHALL VERIFY QUANTITIES PER FINAL BID QUANTITY SHEET.

\* ALL EXISTING BMPs INCLUDING CONSTRUCTION ENTRANCE, SEDIMENT BARRIERS, SILT FENCE, EROSION CONTROL BERM, AND EROSION CONTROL MAT SHALL BE MAINTAINED AND REPAIRED IF NECESSARY. REPLACEMENT OR REMOVAL OF EROSION CONTROL MEASURES TO BE PAID FOR BY L.S. BID ITEM "MAINTAIN EXISTING EROSION CONTROL BMPs"

	PERFEKTA ADDITION	
	EROSION CONTROL PLAN	
SWS IMPROVEMENTS		
<small>Baughman Company, P.A. 315 Ellis St., Wichita, KS 67211 P 316-262-7271 F 316-262-0149 ENGINEERING   SURVEYING   PLANNING   LANDSCAPE ARCHITECTURE</small>		
PROJECT NUMBER 0278 PPD (607861)	DESIGN TJW	DRAWN TMS
REVISIONS:	APPROVED	DATE 04/16
	SCALE Noted	
	6 OF 7	
PPD.dwg	14-07-E095	

