

THE CONTRACTOR SHALL NOT OPERATE EQUIPMENT OR PERFORM CONSTRUCTION WITHIN THE PIPELINE EASEMENT WITHOUT A CONOCOPHILLIPS REPRESENTATIVE ON-SITE. COORDINATION OF ALL EQUIPMENT CROSSINGS AND CONSTRUCTION WITHIN THE PIPELINE EASEMENT SHALL BE COORDINATED WITH THE PIPELINE REPRESENTATIVE, SCOTT SALISBURY, 681-2081

STA 53+25  
BL STA 102+61.6  
INSTALL 16"x12" MJ TEE & BLOCK. INSTALL 12" MJ BFV & VALVE BOX W OF TEE.  
INSTALL 16" MJ BFV & VALVE BOX N OF TEE.  
RESTRAIN VALVE TO TEE.  
STUB OUT 5' OF 16" DIP WL (N)  
INSTALL 16" CAP W/2" BLOWOFF ASSEMBLY.  
SEE VALVE ASSEMBLY DETAIL.

STA 53+40±  
REMOVE EXISTING 16" MJ PLUG AND SALVAGE TO OWNER. MAKE CONNECTION TO EXISTING 16" WL USING 16" MJ LONG SLEEVE.  
FIELD VERIFY LOCATION

INSTALL 280 LF OF 12" C909 CL. 235 PVC

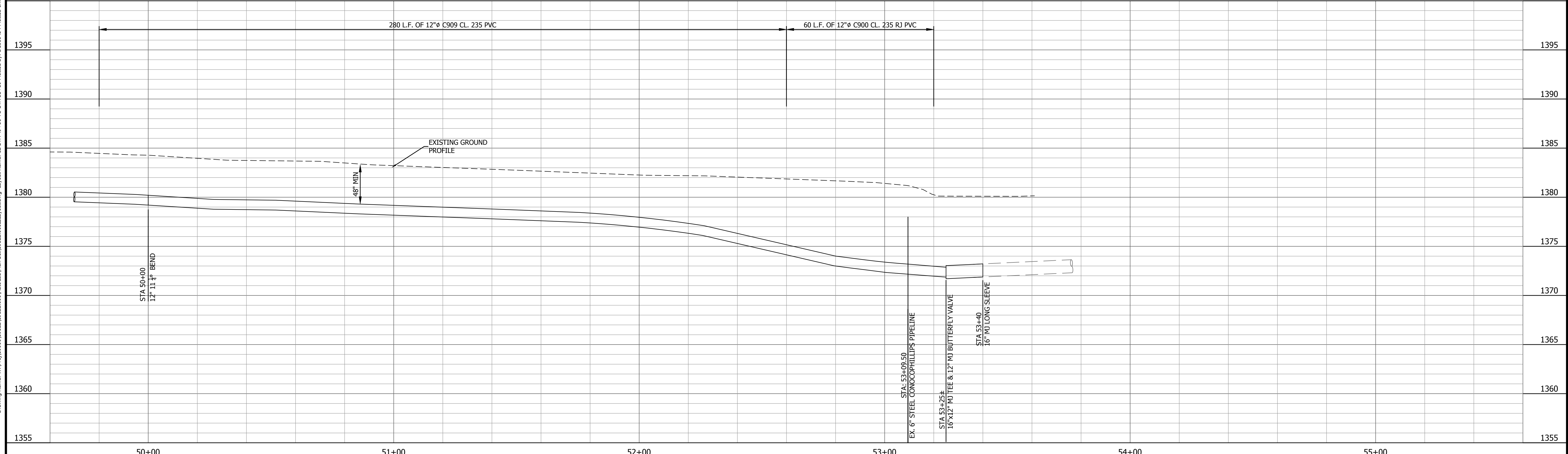
INSTALL 60 LF OF 12" C900 CL. 235 RJ PVC

STA 50+00  
BL STA 99+36.3  
INSTALL 12" MJ 11 1/4" BEND & BLOCK

STA 53+09.50  
CAUTION GAS LINE CROSSING - CONOCOPHILLIPS

ALTERNATE BID ITEM: C900 CL. 235 PVC FOR ALL PIPING

BENCHMARK:  
X CUT IN N. END OF W. HEADWALL ON 127TH ST. E. & 125' ± S. OF E. 29TH ST. N. EL. = 1382.27



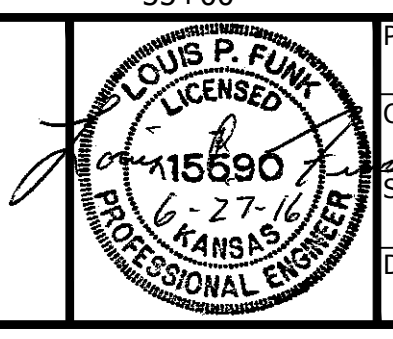
#	DATE	DESCRIPTION	BY

DESIGNED BY: BMH  
DRAWN BY: DOJ  
CHECKED BY: ADW  
PROJECT ENGR:



12" WATERLINE INSTALLATION PROJECT  
E 29TH ST N FROM N GREENWICH RD TO N 127TH ST E  
WICHITA, KANSAS

PLAN & PROFILE  
STA 49+80 TO STA 53+39



PROJ NO: 19122.000  
CONST PROJ:  
SCALE: AS NOTED  
DATE: JUNE 2016

DRAWING NO: 12  
SHEET NO: 12 OF 19