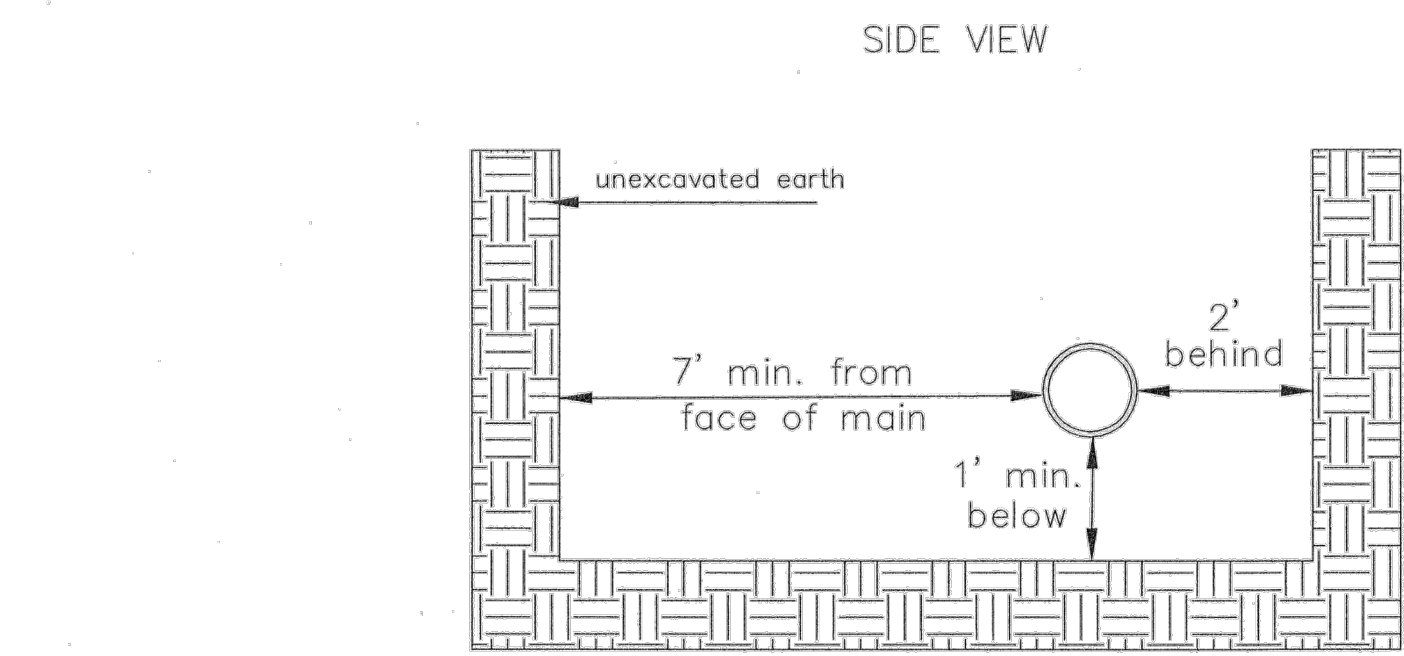
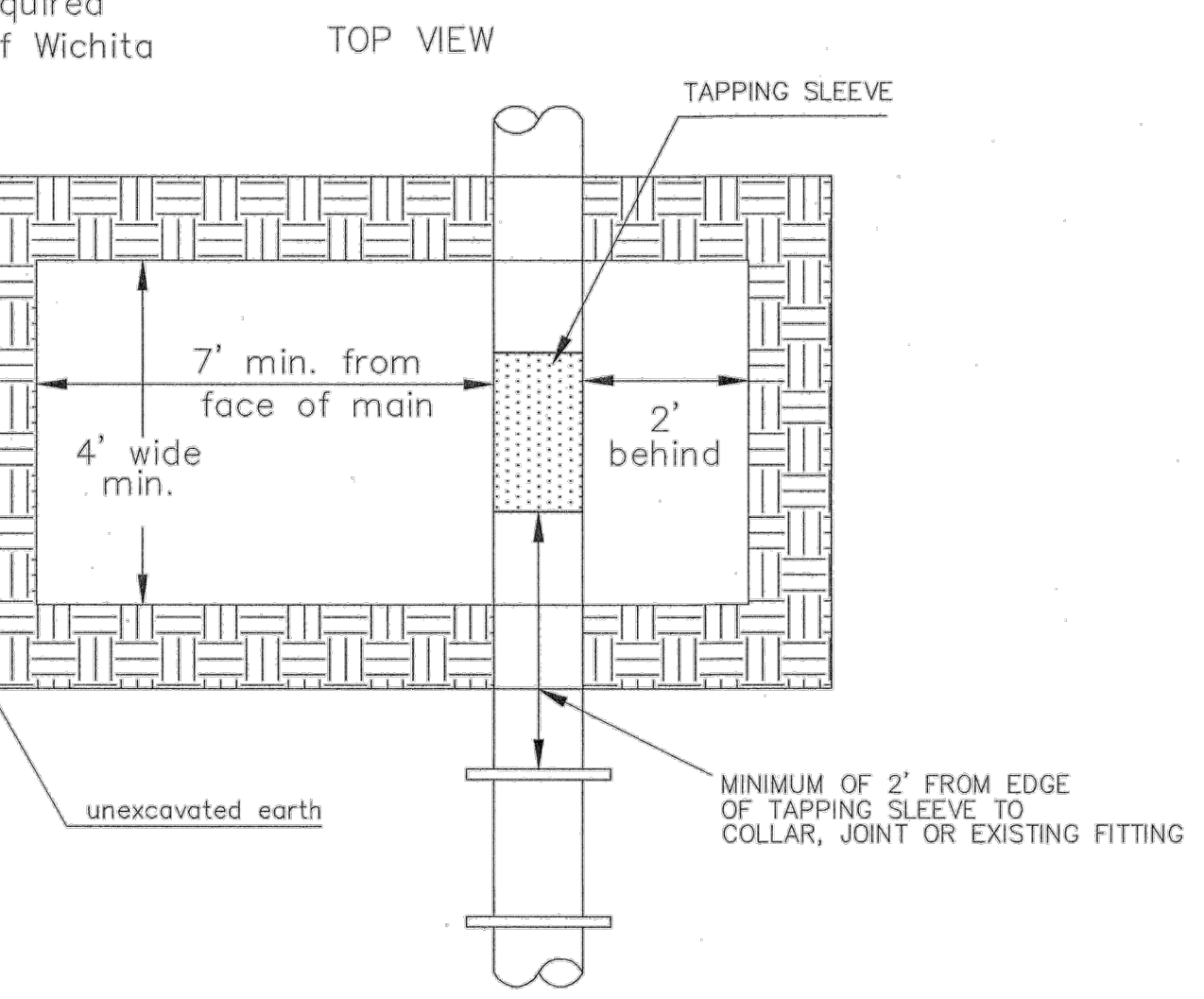


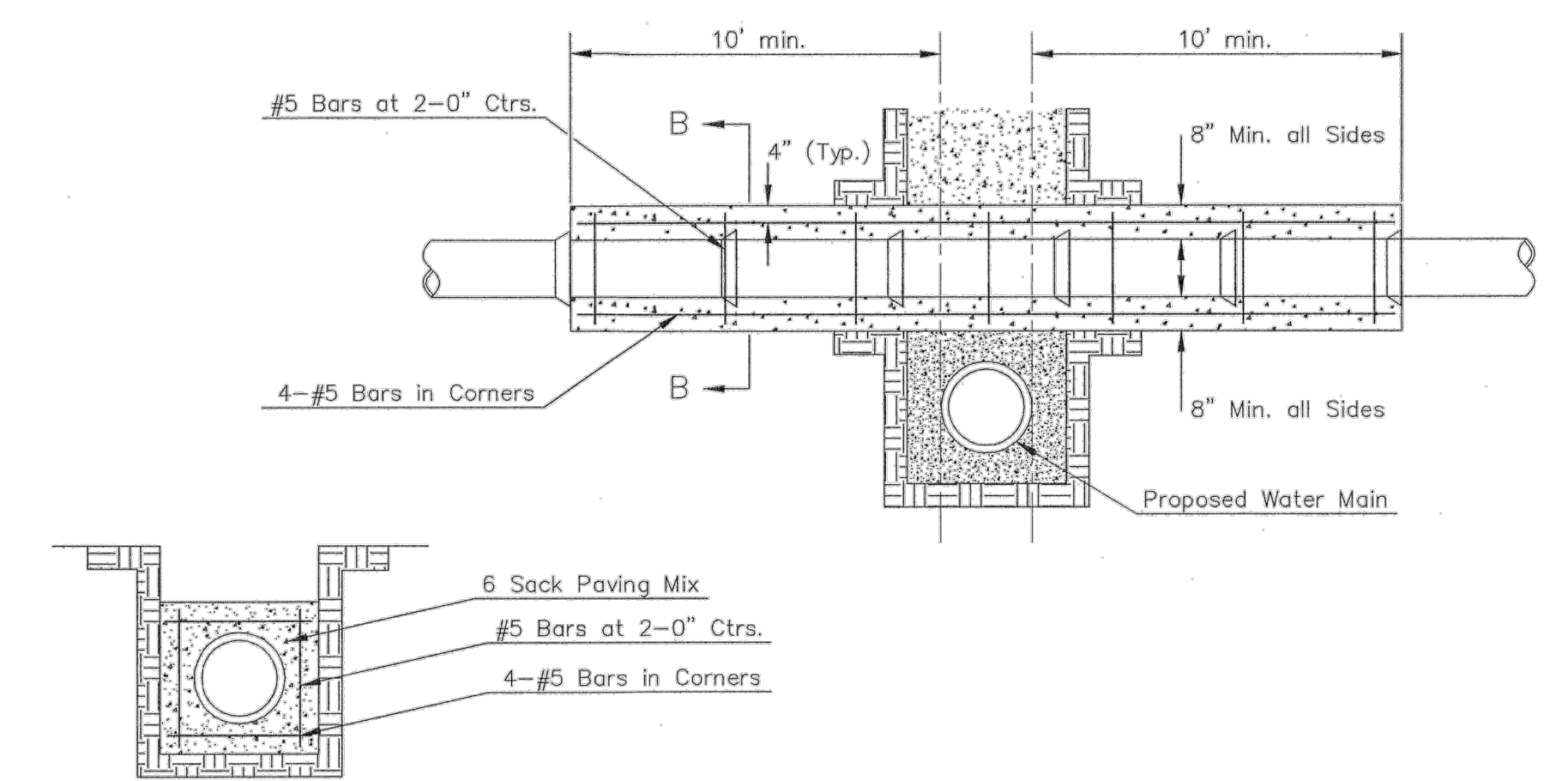
TRENCH COMPACTION IN ROAD RIGHT-OF-WAY



Note: When shoring is required it is to be per The City of Wichita Standard Specifications.



EXCAVATION FOR WET TAP



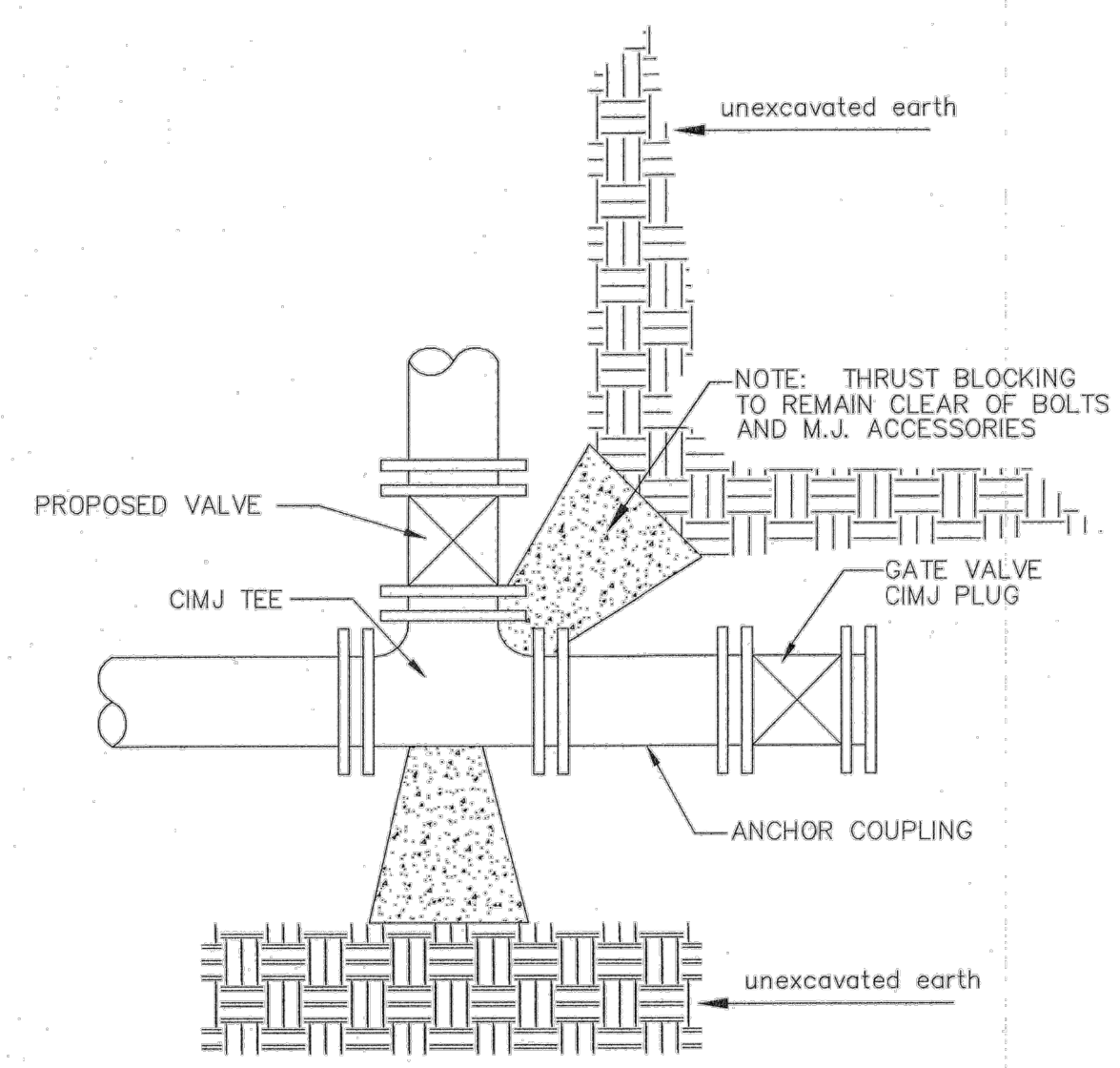
SECTION B-B

Note: Encasement to begin and end at a Bell on Sanitary Sewer Pipe.

REINFORCED CONCRETE ENCASEMENT OF SANITARY SEWER

PIPE SIZE	THRUST AT FITTINGS IN TONS-AT 150#/IN ² P					
	PLUG	90°	45°	22 1/2°	11 1/4°	TEE
6"	2.8	3.95	2.15	1.09	.55	2.8
8"	4.9	6.95	3.75	1.90	.96	4.9
12"	11.4	16.1	8.75	4.45	2.25	11.4
16"	20.15	28.5	15.4	7.85	3.95	20.15
20"	31.15	44.0	23.85	12.15	6.10	31.15
24"	44.55	63.0	34.1	17.4	8.75	44.55

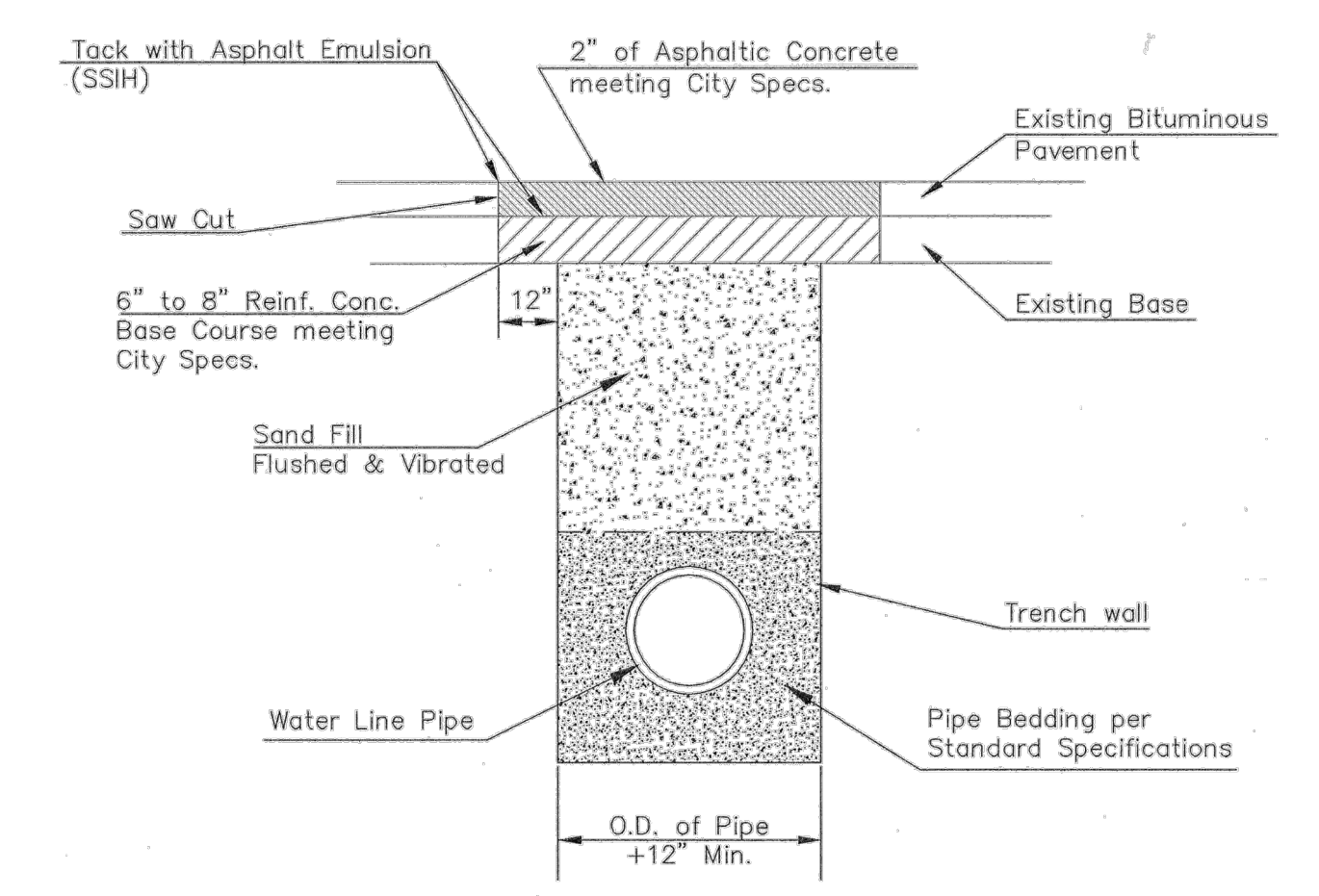
TYPICAL THRUST BLOCKS



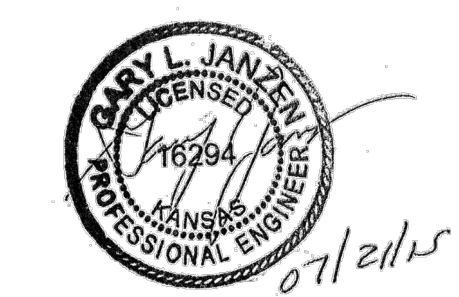
KEY BLOCK DETAIL

* PLANS GOVERN UNLESS OTHERWISE NOTED ON PLANS

PAVEMENT REPLACEMENT & TRENCH COMPACTION UNDER EXISTING AND PROPOSED CITY ROADS



REVISIONS: JULY 2015



CITY OF WICHITA
PUBLIC WORKS & UTILITIES ENGINEERING DIVISION

MISCELLANEOUS WATER DETAILS		
CITY ENGINEER GARY JANZEN, P.E.		
PROJECT NUMBER	OCA NUMBER	DATE
CITY ENGINEER'S OFFICE CITY HALL - SEVENTH FLOOR 455 NORTH MAIN STREET WICHITA, KANSAS 67202-1620 (316) 268-4501		SHEET

WL-104

Drawing Name: W:\Proj\19000\1912\1912\22\000\AutoCAD\Plan Set\1912\22\000\details.dwg Layout Name: 13 DETAILS Plotted By: DDD0434 Plotted on: 7/29/2016 10:52:02 AM
Last edit on: 09/09/00

#	DATE	DESCRIPTION	BY

DESIGNED BY:	---
DRAWN BY:	---
CHECKED BY:	---
PROJECT ENGR:	ADW

BARTLETT & WEST
1200 SW EXECUTIVE DRIVE - TOPEKA, KS 66615.3880
PHONE 785.272.2252 - FAX 785.272.7349
WWW.BARTWEST.COM

12" WATERLINE INSTALLATION PROJECT
E 29TH ST N FROM N GREENWICH RD TO N 127TH ST E
WICHITA, KANSAS

MISCELLANEOUS WATERLINE DETAILS

PROJ NO: 19122.000	CONST PROJ: ---	DRAWING NO: 13
SCALE: AS NOTED	DATE: JUNE 2016	SHEET NO: 13 OF 19