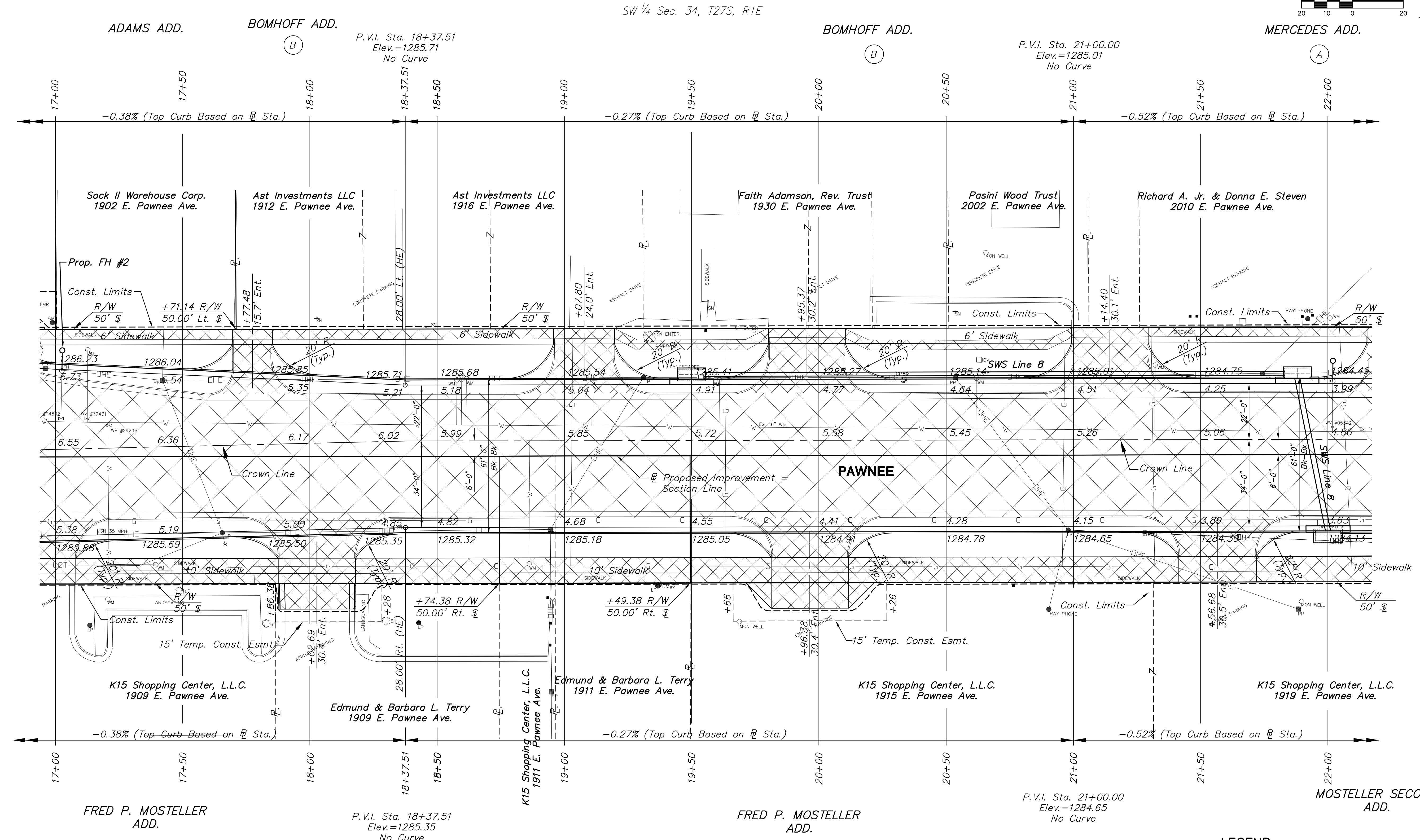
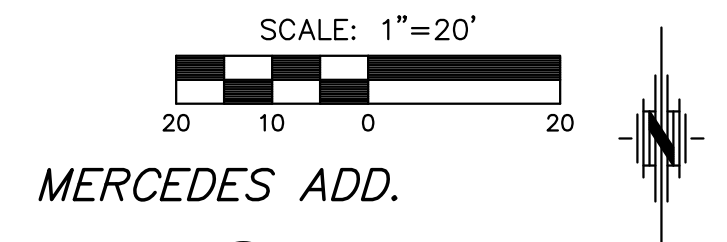


Horizontal Control Point #59
 1. 5/8" bar with red "MKEC CP" cap
 2. Sta. 20+33.38, 29.72' Lt.
 N 1672766.88 E 1656014.58

STATE	PROJECT NO.	YEAR	SHEET NO.	TOTAL SHEETS
KANSAS	87 N-0597-01	2016	13	191



STREET IMPROVEMENTS FOR:
PAWNEE AVENUE
 FROM HYDRAULIC TO POPLAR
 WICHITA, KANSAS

©2013 MKEC Engineering All Rights Reserved
 www.mkec.com
 These drawings and their contents, including, but not limited to, all concepts, designs, & ideas are the exclusive property of MKEC Engineering (MKEC), and may not be used or reproduced in any way without the express consent of MKEC.

PAVING PLAN
 STA. 17+00 TO
 STA. 22+00

PROJECT NO.	87 N-0597-01
DATE	DATE
SCALE	1"=20'

DESIGNED	DRAWN	CHECKED
JRA	JSB	LAC

NO.	REVISION	DATE

SHEET NO.
 13 OF 191

PLOTTED: Monday, May 09, 2016 @ 08:57:58 AM
 J:\CIVIL\057450\DRAWING\PAVING\057450E3.DWG

UTILITY ADJUSTMENTS				
STATION	OFFSET	EXISTING ELEVATION	PROPOSED ELEVATION	REMARKS
17+02.26	15.2' Lt.	No Elevation	1286.45	Valve Box Adjusted
17+02.66	33.8' Lt.			Fire Hydrant Relocation (See General Note)
17+12.57	15.0' Lt.	No Elevation	1286.40	Valve Box Adjusted
17+12.82	42.1' Lt.	1286.93	1286.48	Water Meter Adjusted
17+21.18	12.3' Lt.	No Elevation	1286.44	Valve Box Adjusted
17+39.33	42.4' Rt.	1286.18		Water Meter Relocated (See General Note)
18+57.85	30.0' Lt.	1285.66		Water Meter Relocated (See General Note)

UTILITY ADJUSTMENTS				
STATION	OFFSET	EXISTING ELEVATION	PROPOSED ELEVATION	REMARKS
18+59.69	30.0' Lt.	1285.72		Water Meter Relocated (See General Note)
18+61.58	30.5' Lt.	1285.70		Water Meter Relocated (See General Note)
18+86.13	42.3' Rt.	1285.75		Water Meter Relocated (See General Note)
19+10.96	28.6' Lt.	1285.08		Water Meter Relocated (See General Note)
19+61.00	29.9' Lt.	1285.58		Water Meter Relocated (See General Note)
20+61.94	30.3' Lt.	1285.18		Water Meter Relocated (See General Note)
21+32.22	35.3' Lt.	1285.00		Water Meter Relocated (See General Note)

BM#2 Square cut on top south side L.P. base, Northwest corner Checkers parking lot, South side Pawnee
 Sta. 19+37.06, 50.60' Rt. El. 1288.34 (NAVD 88)

- LEGEND**
- Mill & Overlay
 - Full-depth Asphalt Widening
 - Pavement/Walk Removal
 - Brick Pavers
 - AC Patch
 - Stamped, Concrete
 - Riprap, Light Stone
 - Aggregate Surfacing
 - Construct Wheelchair Ramp See Sh. No. 65
 - SWS or SS Removal
 - Tree Removal