

GENERAL TRAFFIC CONTROL NOTES

All signs and pavement markings conflicting with construction traffic control shall be covered or removed as directed by the Engineer.

As the various construction activities progress, certain situations may arise that will preclude adhering to the original construction sequence or which, in the opinion of the Contractor, would readily adapt themselves to a more efficient phasing operation. Should this occur, the Contractor may submit to the Engineer an alternative plan for approval.

Contractor shall maintain existing drainage system during construction and address local drainage issues as necessary during construction. Temporary drainage measures will be subsidiary to other items in the contract. Contractor shall provide for drainage in sump areas opened to traffic. Ponded stormwater in sump areas will not be allowed.

Maintain access to all driveways and entrances within the project limits at all times. Driveways 16' wide and wider shall be constructed half at a time with the other half remaining open. Driveways less than 24' may be closed completely during construction.

Poplar Street Construction shall occur half-at a time with the other half remaining open. This street has no other access routes besides Pawnee Avenue.

Minneapolis Street right and Minnesota Street shall not be closed at the same time.

All traffic controls signs and devices shall be in conformance with the latest edition of the Manual on Uniform Traffic Control Devices.

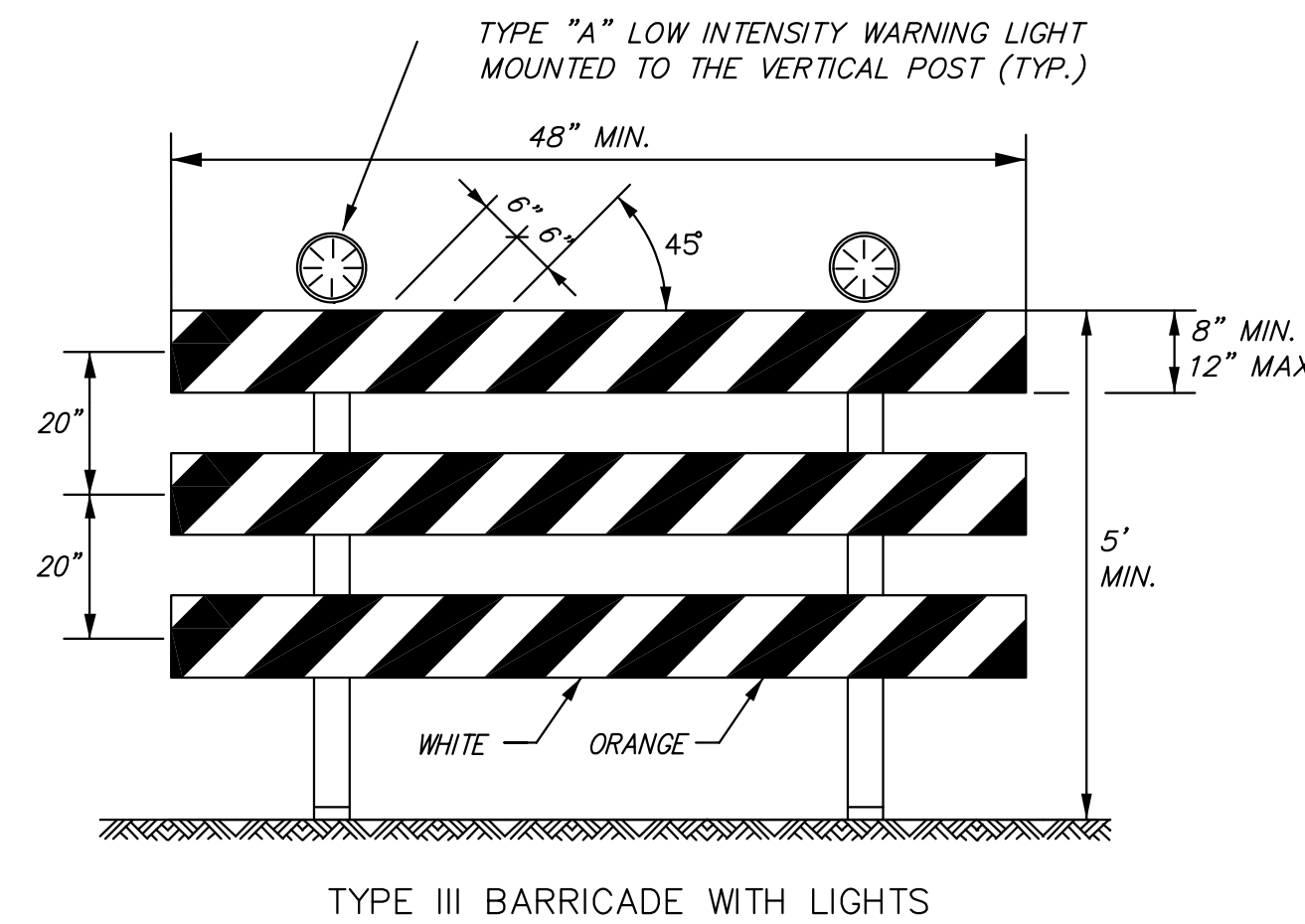
Contractor shall provide temporary asphalt pavement where necessary to bridge grade differentials between new and existing pavement. Cost of Temporary Surfacing Shall be paid for as "AC Pavement 6", Temporary" and will be measured by the square yard.

In the locations indicated and where else necessary to facilitate construction and traffic through construction, the contractor shall remove existing raised median pavement and curb and replace with temporary asphalt pavement in accordance with the plans. All removals and replacements shall be approved by the City prior to constructing. Temporary pavement shall consist of 6" asphalt over 5" crushed rock base on compacted subgrade. Temporary pavement shall be paid for as "A.C. Pavement 6", Temporary" and "Crushed Rock Base 5" Temporary" and shall include all work to construct and eventually remove the temporary pavement. The removal of existing medians on Pawnee shall be paid for as part of "Pavement Removal". The removal and replacement of existing medians on Southeast Blvd. shall be paid for as "C & G, Removed and Replaced" and "A.C. Pavement Median Surface Removed and Replaced".

During construction, temporary traffic signals are to be erected to replace existing signals throughout the project. The bid item "Traffic Signalization, Temporary" will include all equipment, materials and labor to erect a temporary signal at each location to replace the operation of the existing signal prior to the installation and operation of the new traffic signal. This will include multiple pole and span-wire arrangements, if necessary and traffic signal head placement to accommodate all phases of construction. Plan quantities for replacement are based on this occurring once after phase 5 is complete.

Refer to sheet 86 for additional Phase 1 Construction and sequencing notes.

During any construction phase where left turns onto Pawnee from the southbound I-135 off ramps are prohibited, the advance warning signing plan depicted below shall be erected and maintained by the contractor. Coordinate sign erection with KDOT.



TYPE III BARRICADE WITH LIGHTS

The entire area of barricade rails, both front and back, shall have ASTM Type III sheeting.

The stripes shall slope downward to the side traffic is to proceed or toward the center of the roadway at road closures.

Approved signs mounted on Type III barricades should not cover more than 50% of the top two rails or 33% of the total area of the three rails.

When barricades are placed end-to-end or staggered, a Type "A" low intensity warning light shall be mounted to the vertical post near each outside corner of the end barricades.

BARRICADE PLACEMENT:

A) COMPLETE ROAD CLOSURE

When a roadway is closed, Type III barricades shall be placed end-to-end to completely cover the roadway and shoulders. When access must be allowed for construction or other official/government vehicles, Type III barricades shall be longitudinally staggered far enough apart from one another to allow safe passage of vehicles and maintain the appearance of a closed roadway. Type III barricades shall be realigned and placed end-to-end to deny any access when the construction activity has ceased for the day.

B) ROAD CLOSED - LOCAL TRAFFIC

As shown in figure 4, when local traffic must be allowed access into the work zone, Type III barricades shall be longitudinally staggered to maintain the appearance of a closed roadway. A second line of end-to-end Type III barricades shall be placed just beyond the last access point in the work zone, to completely close the roadway as described in note 2-A.

As shown in figure 1 and figure 3, at the point where thru traffic must detour and local traffic can proceed to the location where the roadway is completely closed, the R11-3a (road closed miles ahead local traffic only) or R11-4 (road closed # local traffic only or road closed to thru traffic) sign shall be used with Type III barricades (winged position), placed on the shoulders of roadway.

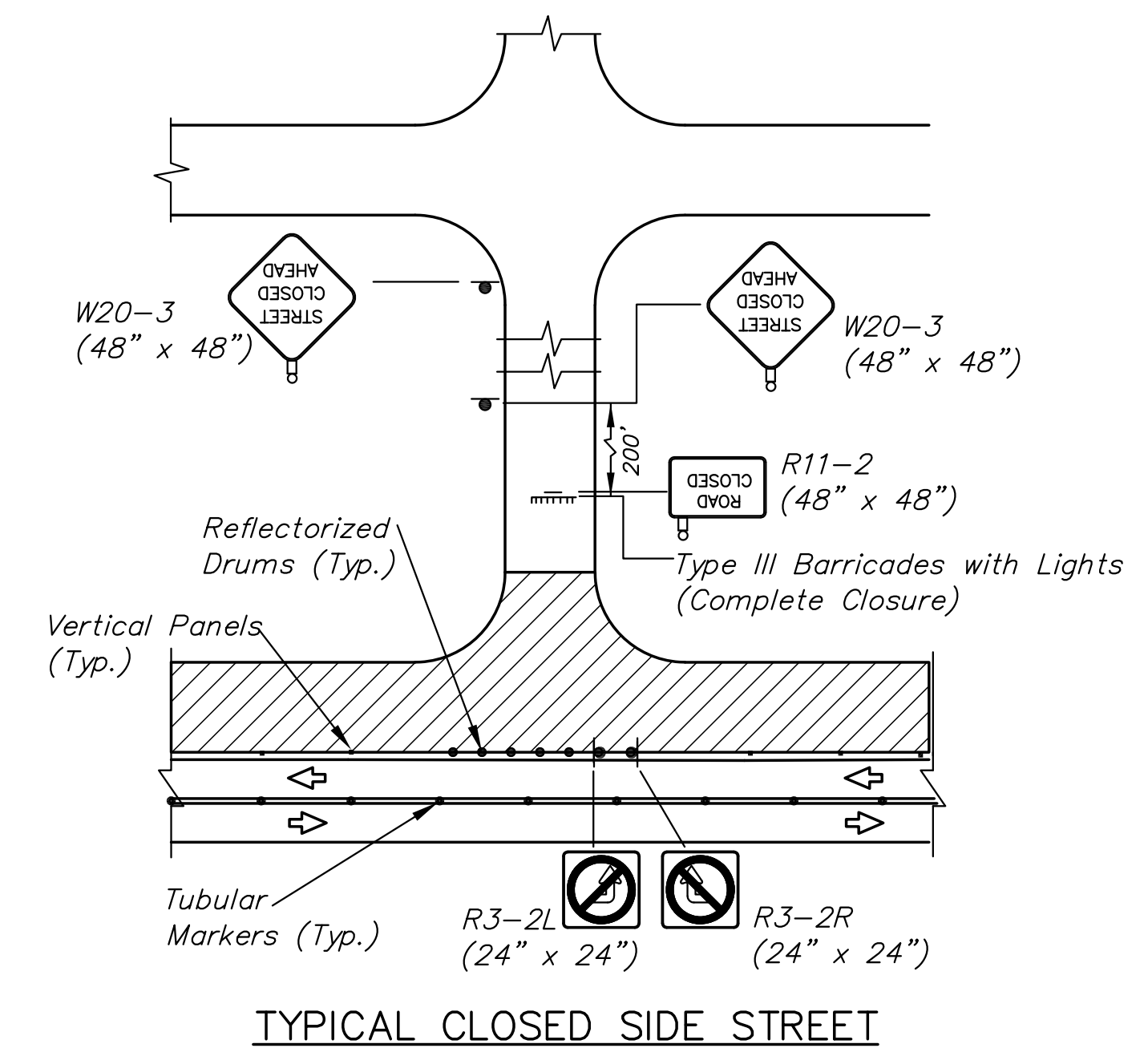
STATE	PROJECT NO.	YEAR	SHEET NO.	TOTAL SHEETS
KANSAS	87 N-0597-01	2016	137	191

LEGEND

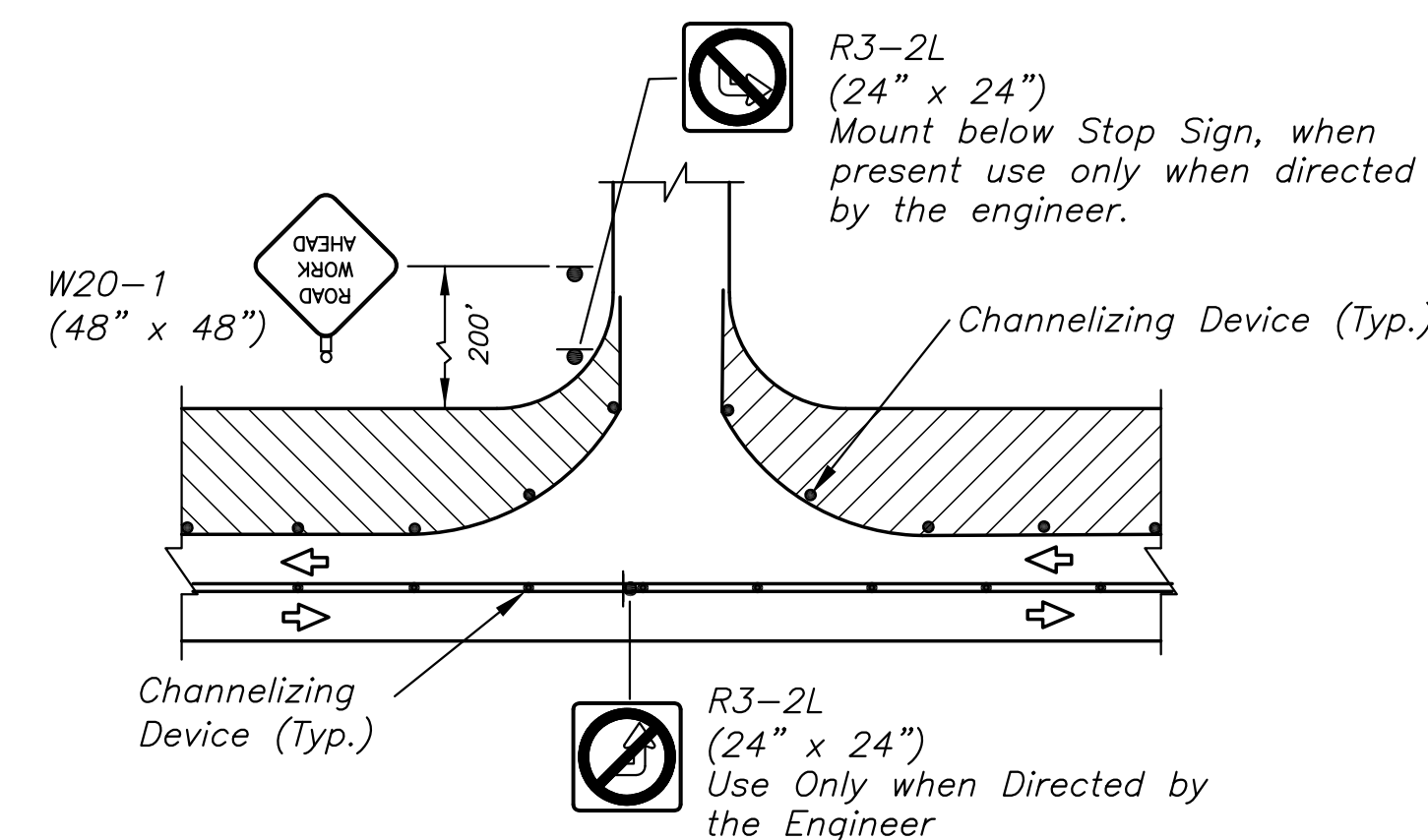
- LLL Type III Barricades with lights
- Mount On Type III Barricade
- Type B Warning Light
- ↑ Sign
- ↔ Traffic Flow
- ▨ Work Area
- ▤ Shoofly Detour
- Channelizer
- △ Mount Overhead on Signal Cross-arm
- ▧ Temporary Asphalt Widening



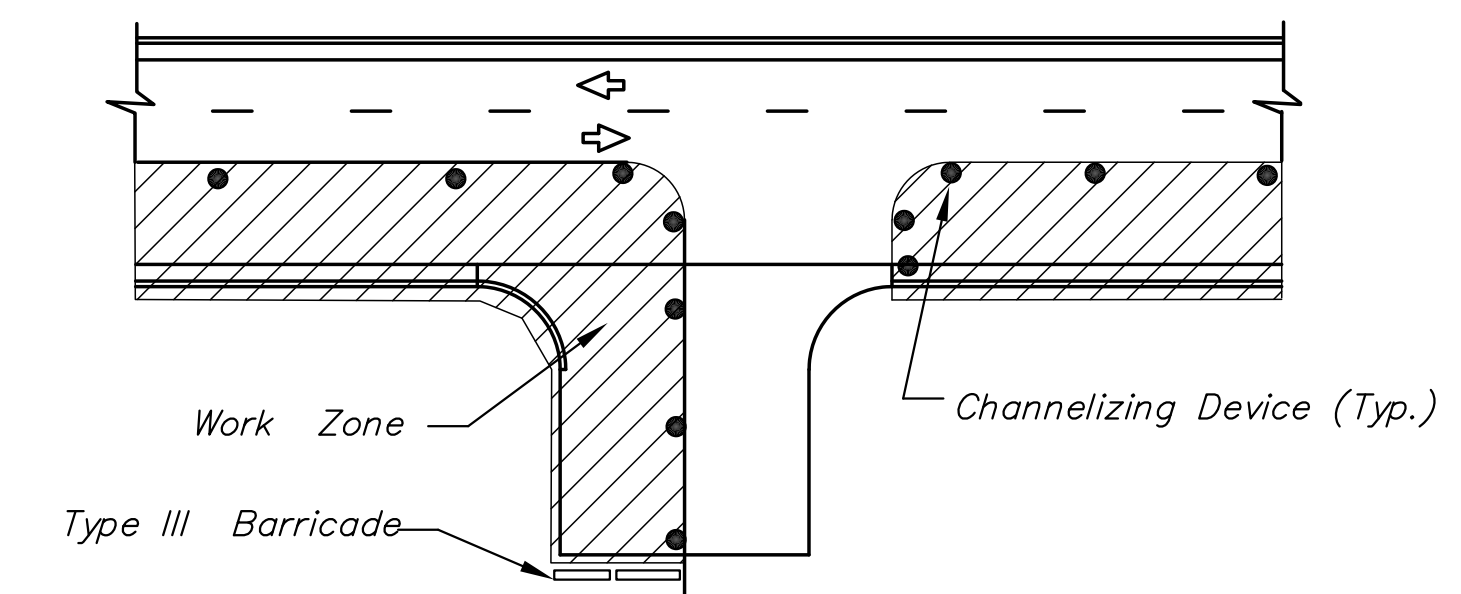
STREET IMPROVEMENTS FOR:
PAWNEE AVENUE
FROM HYDRAULIC TO POPLAR
WICHITA, KANSAS



TYPICAL CLOSED SIDE STREET



TYPICAL ENTRANCE AND SIDE STREET



TYPICAL DRIVEWAY ENTRANCE CONSTRUCTION

Maintain access to businesses at all times. If a single property has multiple entrances, one entrance at a time may be closed for construction.

Note:

4" Solid White Edge Lines Are Required Along Existing Curbs.

©2013 MKEC Engineering All Rights Reserved www.mkec.com These drawings and their contents, including, but not limited to, all concepts, designs, & ideas are the exclusive property of MKEC Engineering (MKEC), and may not be used or reproduced in any way without the express consent of MKEC.

TRAFFIC CONTROL DETAILS

PROJECT NO.	87 N-0597-01	
DATE	DATE	
SCALE	NO SCALE	
DESIGNED	DRAWN	CHECKED
JRA	JSB	JRA
NO.	REVISION	DATE

SHEET NO.