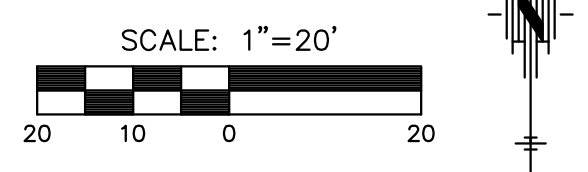
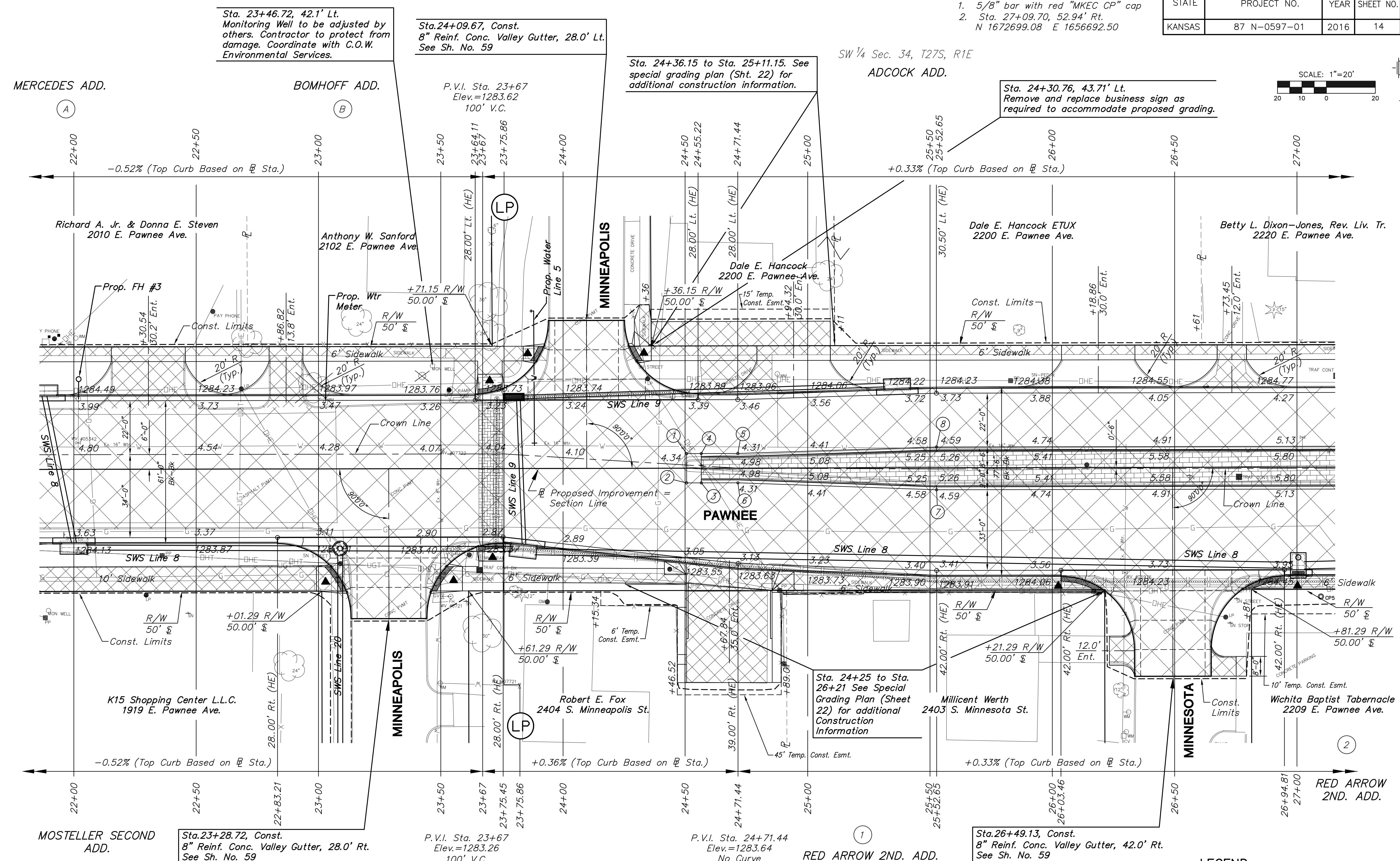


J:\CIVIL\5450\DWG\PAV\05745E1.DWG  
 PLOTTED: Monday, May 09, 2016 @ 8:53:58 AM

Horizontal Control Point #58  
 1. 5/8" bar with red "MKEC CP" cap  
 2. Sta. 27+09.70, 52.94' Rt.  
 N 1672699.08 E 1656692.50

STATE	PROJECT NO.	YEAR	SHEET NO.	TOTAL SHEETS
KANSAS	87 N-0597-01	2016	14	191



STATION	OFFSET	EXISTING ELEVATION	PROPOSED ELEVATION	REMARKS
22+01.80	10.8' Lt.	No Elevation	1284.65	Valve Box Adjusted
22+01.97	28.9' Lt.			Fire Hydrant Relocation (See General Note)
23+02.89	27.10 Lt.			Water Meter Relocated (See General Note)
23+50.23	7.7' Lt.	1283.81	1284.01	Valve Box Adjusted
23+50.76	52.2' Rt.	No Elevation	1284.26	Valve Box Adjusted
23+54.01	52.2' Rt.	1284.58	1284.41	Fire Hydrant Adjustment
24+87.63	38.5' Lt.	1284.26		Water Meter Relocated (See General Note)
26+29.60	43.1' Rt.	1284.00	1283.76	Valve Box Adjusted

POINT NO.	STATION	OFFSET	ELEVATION	
			FLOWLINE	TOP CURB
1	24+50.51	6.00' Lt.	1284.20	HE
2	24+50.51	6.00' Rt.	1284.12	HE
3	24+56.51	6.00' Rt.	1284.20	1284.87
4	24+56.51	6.00' Lt.	1284.26	1284.93
5	24+71.44	6.00' Lt.	1284.31	1284.98
6	24+71.44	6.00' Rt.	1284.31	1284.98

POINT NO.	STATION	OFFSET	ELEVATION	
			FLOWLINE	TOP CURB
7	25+52.65	9.00' Rt.	1284.59	1285.26
8	25+52.65	8.50' Lt.	1284.59	1285.26

BM#3 Square cut on top of curb East side of Minnesota, 113'± South of Q Pawnee.  
 Sta. 26+64.18, 113.87' Rt. El. 1283.56 (NAVD 88)

	Mill & Overlay		Stamped, Concrete
	Full-depth Asphalt Widening		Riprap, Light Stone
	Pavement/Walk Removal		Aggregate Surfacing
	Brick Pavers		Construct Wheelchair Ramp See Sh. No. 65
	AC Patch		XXXXX SWS or SS Removal
			Tree Removal

STREET IMPROVEMENTS FOR:  
**PAWNEE AVENUE**  
 FROM HYDRAULIC TO POPLAR  
 WICHITA, KANSAS

©2013 MKEC Engineering All Rights Reserved  
 www.mkec.com  
 These drawings and their contents, including, but not limited to, all concepts, designs, & ideas are the exclusive property of MKEC Engineering (MKEC), and may not be used or reproduced in any way without the express consent of MKEC.

PAVING PLAN STA. 22+00 TO STA. 27+00	
PROJECT NO.	87 N-0597-01
DATE	DATE
SCALE	1"=20'
DESIGNED	DRAWN
JRA	JSB
CHECKED	LAC
NO.	REVISION
	DATE
SHEET NO.	
14 OF 191	