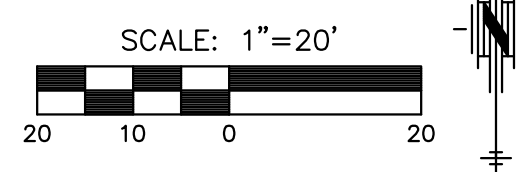
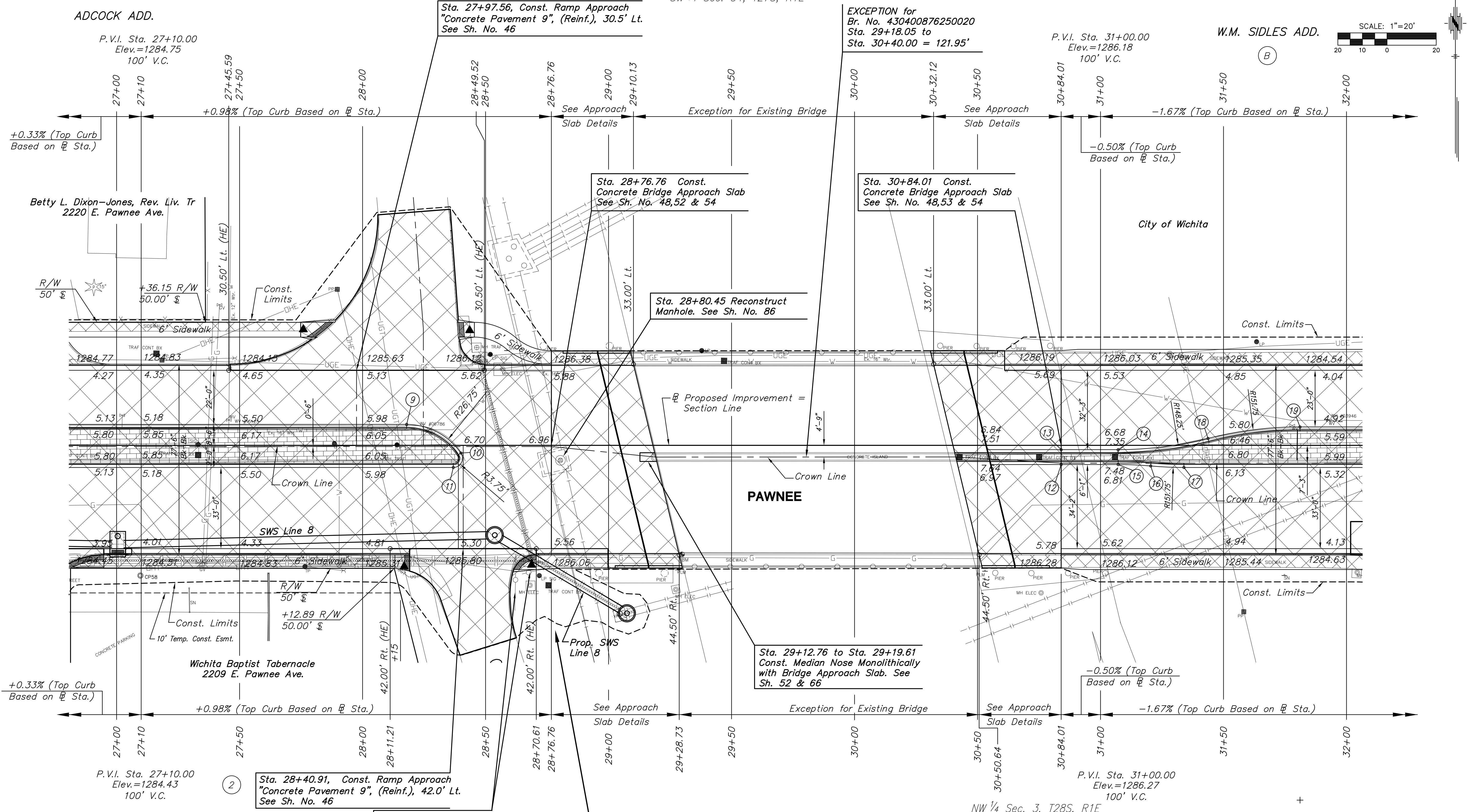




Horizontal Control Point #58
 1. 5/8" bar with red "MKEC CP" cap
 2. Sta. 27+09.70, 52.94' Rt.
 N 1672699.08 E 1656692.50

SW 1/4 Sec. 34, T27S, R1E



UTILITY ADJUSTMENTS				
STATION	OFFSET	EXISTING ELEVATION	PROPOSED ELEVATION	REMARKS
27+02.29	12.2' Lt.	1284.68	1284.98	Valve Box Adjusted
27+33.25	47.7' Rt.	1284.85	1284.74	Valve Box Adjusted
27+34.54	49.1' Rt.	1284.95	1284.78	Valve Box Adjusted
27+35.76	47.8' Rt.	1284.87	1284.77	Valve Box Adjusted
27+45.65	10.3' Lt.	1284.94	1285.37	Valve Box Adjusted
27+90.49	48.7' Rt.	1285.16	1285.30	Water Meter Adjusted
31+77.95	8.1' Lt.	1284.90	1285.20	Valve Box Adjusted
31+92.95	10.2' Lt.	1284.67	1284.90	Valve Box Adjusted

Caution!!!
 KDOT ITS cabinet and buried fiber optic cable in area. Work not allowed outside construction limits.

BM#3 Square cut on top of curb East side of Minnesota, 113± South of \bar{L} Pawnee. Sta. 26+64.18, 113.87' Rt. El. 1283.56 (NAVD 88)

MEDIAN LOCATION					
POINT NO.	STATION	OFFSET	ELEVATION		
			FLOWLINE	TOP CURB	
9	28+17.92	8.50' Lt.	1286.16	1286.83	
10	28+39.98	3.13' Rt.	1286.48	1287.15	
11	28+36.89	9.00' Rt.	1286.35	1287.02	
12	30+84.01	7.81' Rt.	1286.98	1287.64	
13	30+84.01	1.75' Rt.	1286.84	1287.51	
14	31+07.19	1.75' Rt.	1286.61	1287.28	
15	31+07.19	7.81' Rt.	1286.76	1287.43	
16	31+20.40	8.40' Rt.	1286.56	1287.25	

MEDIAN LOCATION					
POINT NO.	STATION	OFFSET	ELEVATION		
			FLOWLINE	TOP CURB	
17	31+33.91	9.00' Rt.	1286.37	1287.04	
18	31+43.72	2.82' Lt.	1285.97	1286.64	
19	31+81.11	7.50' Lt.	1285.21	1285.88	

- LEGEND**
- Mill & Overlay
 - Full-depth Asphalt Widening
 - Pavement/Walk Removal
 - Brick Pavers
 - AC Patch
 - Stamped, Concrete
 - Riprap, Light Stone
 - Aggregate Surfacing
 - Construct Wheelchair Ramp See Sh. No. 46 & 65
 - SWS or SS Removal
 - Tree Removal

STREET IMPROVEMENTS FOR:
PAWNEE AVENUE
 FROM HYDRAULIC TO POPLAR
 WICHITA, KANSAS

©2013 MKEC Engineering All Rights Reserved
 These drawings and their contents, including, but not limited to, all concepts, designs, & ideas are the exclusive property of MKEC Engineering (MKEC), and may not be used or reproduced in any way without the express consent of MKEC.

PAVING PLAN
 STA. 27+00 TO
 STA. 32+00

PROJECT NO.	87 N-0597-01	
DATE	DATE	
SCALE	1"=20'	
DESIGNED	DRAWN	CHECKED
JRA	JSB	LAC

NO.	REVISION	DATE