

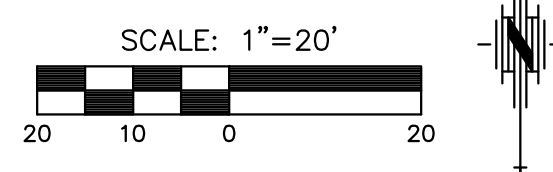
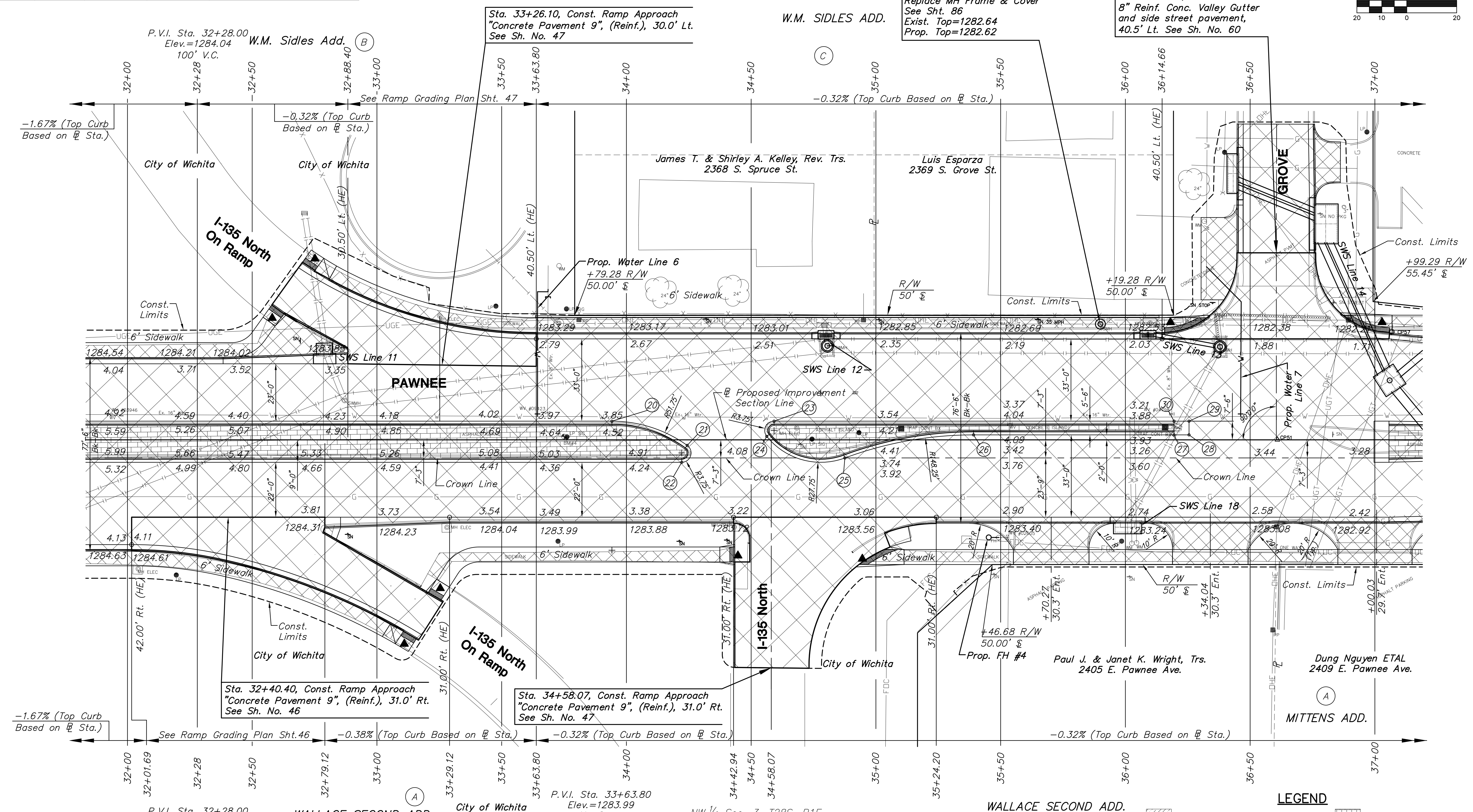
PLOTTED: Monday, May 09, 2016 @ 8:02:29 AM
 J:\CIVIL\57450\DRAWING\PAVING\57450.PAV

UTILITY ADJUSTMENTS				
STATION	OFFSET	EXISTING ELEVATION	PROPOSED ELEVATION	REMARKS
32+87.03	15.7' Lt.	1283.97	1283.94	Manhole Adjusted
33+25.19	49.7' Lt.	1283.30	1283.11	Manhole Adjusted
33+68.38	10.9' Lt.	No Elevation	1283.82	Valve Box Adjusted
33+72.90	46.7' Lt.	1283.34	1283.33	Manhole Adjusted w/ New Ring & Cover
35+49.22	39.1' Rt.			Fire Hydrant Relocation (See General Note)

UTILITY ADJUSTMENTS				
STATION	OFFSET	EXISTING ELEVATION	PROPOSED ELEVATION	REMARKS
35+52.38	39.2' Rt.		1283.37	Valve Box Adjusted
35+53.74	6.4' Lt.	1283.16	1283.35	Valve Box Adjusted
36+02.59	41.5' Rt.	1283.41	1283.57	Water Meter Relocated
36+04.47	41.3' Rt.	1283.30	1283.57	Water Meter Relocated
36+31.63	87.7' Lt.	1283.25	1283.29	Water Meter Adjusted

Horizontal Control Point #57
 1. 5/8" bar with red "MKEC CP" cap
 2. Sta. 37+06.72, 43.30' Lt.
 N 1672817.18 E 1657687.16

STATE	PROJECT NO.	YEAR	SHEET NO.	TOTAL SHEETS
KANSAS	87 N-0597-01	2016	16	191



MEDIAN LOCATION				
POINT NO.	STATION	OFFSET	ELEVATION	REMARKS
20	33+94.19	7.50' Lt.	1283.87	1284.54
21	34+24.36	2.20' Rt.	1284.76	1285.43
22	34+22.17	9.00' Rt.	1284.15	1284.82
23	34+59.18	7.50' Lt.	1283.67	1284.34
24	34+56.25	1.40' Lt.	1283.79	1284.46
25	34+87.56	7.26' Rt.	1284.00	1284.67

MEDIAN LOCATION				
POINT NO.	STATION	OFFSET	ELEVATION	REMARKS
26	35+39.13	2.00' Lt.	1283.50	1284.17
27	36+19.51	2.00' Lt.	1283.24	1283.91
28	36+25.51	2.00' Lt.	-	1283.18 HE
29	36+25.51	7.50' Lt.	-	1283.09 HE
30	36+19.51	7.50' Lt.	1283.15	1283.82

Horizontal Control Point #51
 1. South Quarter Corner of Sec. 34, T27S, R1E
 2. Sta. 36+60.98, 0.00' Lt.
 N = 1672772.88 E = 1657642.38
 3. 5/8" rebar in thimble
 4. to "+" on top of curb on east end of median 39.27' W
 5. to "+" on top of curb on west end of median 14.46' E
 6. to NE corner of building #2405 E. Pawnee 141.58' S
 7. to NW corner of building #2409 E. Pawnee 144.40' SE

BM#4 City of Wichita disc one block West of Grove, West side of traffic signal L.P. conc. base
 Sta. 33+75.00, 1.33' Lt. El. 1284.36 (NAVD 88)

LEGEND			
	Mill & Overlay		Stamped, Concrete
	Full-depth Asphalt Widening		Riprap, Light Stone
	Pavement/Walk Removal		Aggregate Surfacing
	Brick Pavers		Construct Wheelchair Ramp See Sh. No. 46, 60, & 65
	AC Patch		XXXXX SWS or SS Removal
			Tree Removal

STREET IMPROVEMENTS FOR:
PAWNEE AVENUE
 FROM HYDRAULIC TO POPLAR
 WICHITA, KANSAS

©2013 MKEC Engineering
 All Rights Reserved
 www.mkec.com
 These drawings and their contents, including, but not limited to, all concepts, designs, & ideas are the exclusive property of MKEC Engineering (MKEC), and may not be used or reproduced in any way without the express consent of MKEC.

PAVING PLAN	
STA. 32+00 TO STA. 37+00	
PROJECT NO.	87 N-0597-01
DATE	DATE
SCALE	1"=20'
DESIGNED	JRA
DRAWN	JSB
CHECKED	LAC
NO.	REVISION
	DATE
SHEET NO.	
16 OF 191	