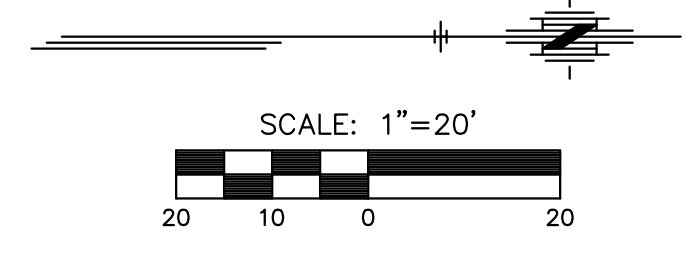


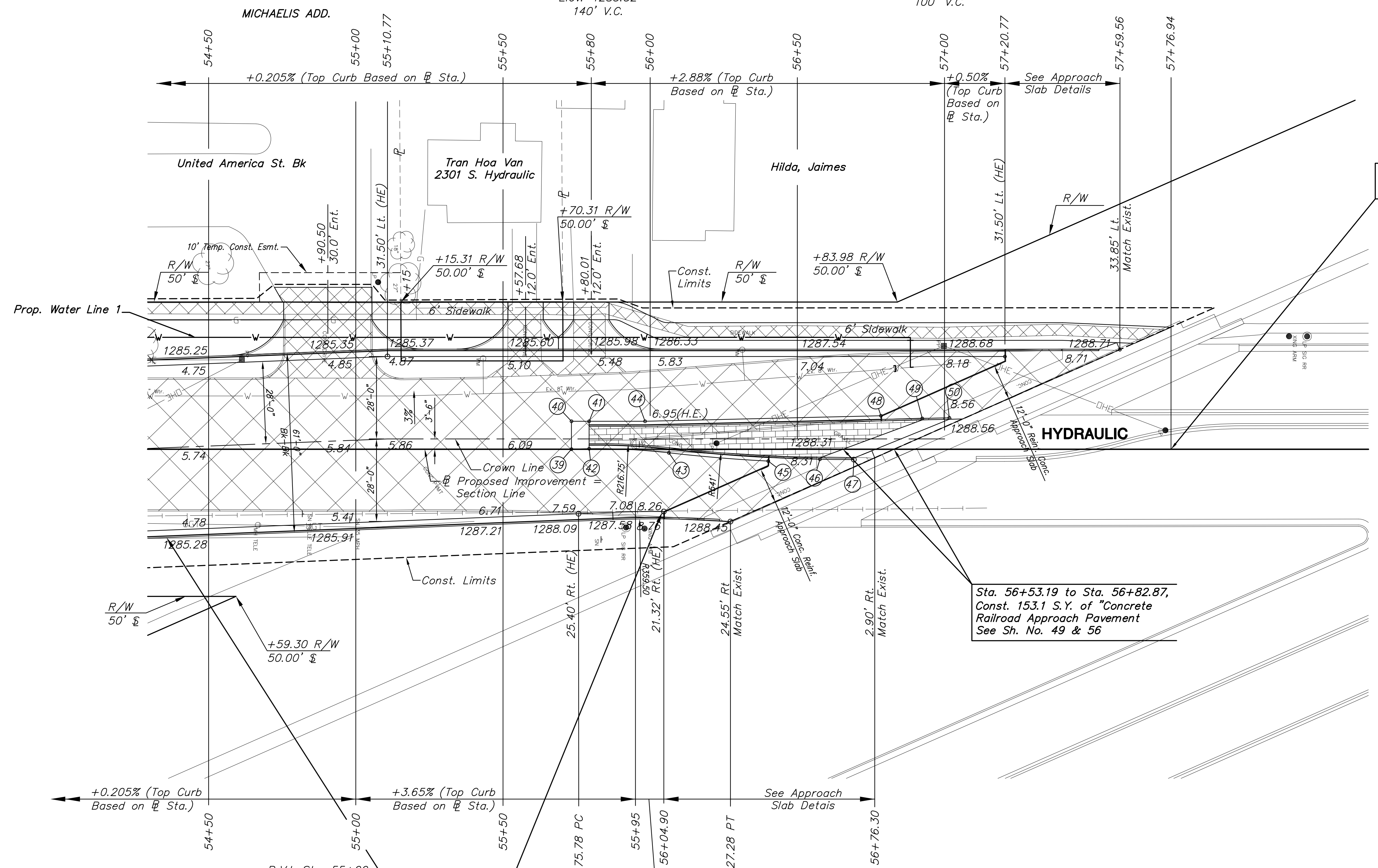
STATE	PROJECT NO.	YEAR	SHEET NO.	TOTAL SHEETS
KANSAS	87 N-0597-01	2016	20	191



SE 1/4 Sec. 33, T27S, R1E

P.V.I. Sta. 55+80
Elev.=1285.52
140' V.C.

P.V.I. Sta. 57+00
Elev.=1288.98
100' V.C.



Sta. 57+76.94 End Construction

Sta. 56+53.19 to Sta. 56+82.87, Const. 153.1 S.Y. of "Concrete Railroad Approach Pavement See Sh. No. 49 & 56

Sta. 54+35.71 to Sta. 56+04.05 Const. 169.05 L.F. of "Concrete Curb & Gutter, Type 1, Special. See Sheet 63

BM#1 City of Wichita Disk on railroad crossing sign, East of Hydraulic, South of Pawnee Sta. 49+63.68, 288.12' Rt. El. 1288.35 (NAVD 88)

POINT NO.	STATION	OFFSET	ELEVATION	
			FLOWLINE	TOP CURB
39	55+73.27	0.02' Lt.	-	1286.75 HE
40	55+73.27	9.50' Lt.	-	1286.19 HE
41	55+79.27	9.50' Lt.	1286.42	1287.09
42	55+79.27	0.18' Lt.	1286.92	1287.59
43	56+06.38	1.22' Rt.	1287.79	1288.46
44	55+98.27	9.50' Lt.	1286.64	1287.31
45	56+40.12	4.03' Rt.	1288.44	1288.94
46	56+57.67	3.40' Rt.	1288.50	1289.00
47	56+69.19	3.51' Rt.	1288.57	1288.57
48	56+78.39	11.39' Lt.	1288.48	1288.98
49	56+92.44	10.47' Lt.	1288.58	1289.08
50	57+01.62	10.68' Lt.	1288.64	1288.64

- LEGEND**
- Stamped, Concrete
 - Mill & Overlay
 - Full-depth Asphalt Widening
 - Pavement/Walk Removal
 - Brick Pavers
 - AC Patch
 - Riprap, Light Stone
 - Aggregate Surfacing
 - Construct Wheelchair Ramp See Sh. No. 65
 - SWS or SS Removal
 - Tree Removal

STREET IMPROVEMENTS FOR:
PAWNEE AVENUE
FROM HYDRAULIC TO POPLAR
 WICHITA, KANSAS

©2013 MKEC Engineering All Rights Reserved
 These drawings and their contents, including, but not limited to, all concepts, designs, & ideas are the exclusive property of MKEC Engineering (MKEC), and may not be used or reproduced in any way without the express consent of MKEC.

PAVING PLAN
 STA. 54+00 TO
 STA. 57+76.94

PROJECT NO.	87 N-0597-01	
DATE	DATE	
SCALE	1"=20'	
DESIGNED	DRAWN	CHECKED
JRA	JSB	LAC
NO.	REVISION	DATE
SHEET NO.		
20 OF 191		

PLOTTED: Monday, May 09, 2016 @ 8:33:58 AM
 J:\CIVIL\057456\DWG\PAV\057456E10.DWG

UTILITY ADJUSTMENTS				
STATION	OFFSET	EXISTING ELEVATION	PROPOSED ELEVATION	REMARKS
54+66.78	25.8' Rt.	1285.08	1285.00	Manhole Adjusted
55+43.26	30.8' Lt.	1285.67		Water Meter Installed (See General Note)
56+31.28	33.8' Lt.	1287.89		Water Meter Installed (See General Note)

SW 1/4 Sec. 34, T27S, R1E

P.V.I. Sta. 55+00
Elev.=1285.35
130' V.C.

P.V.I. Sta. 55+95
Elev.=1288.82
60' V.C.