

PLOTTED: Monday, May 09, 2016 @ 11:37AM

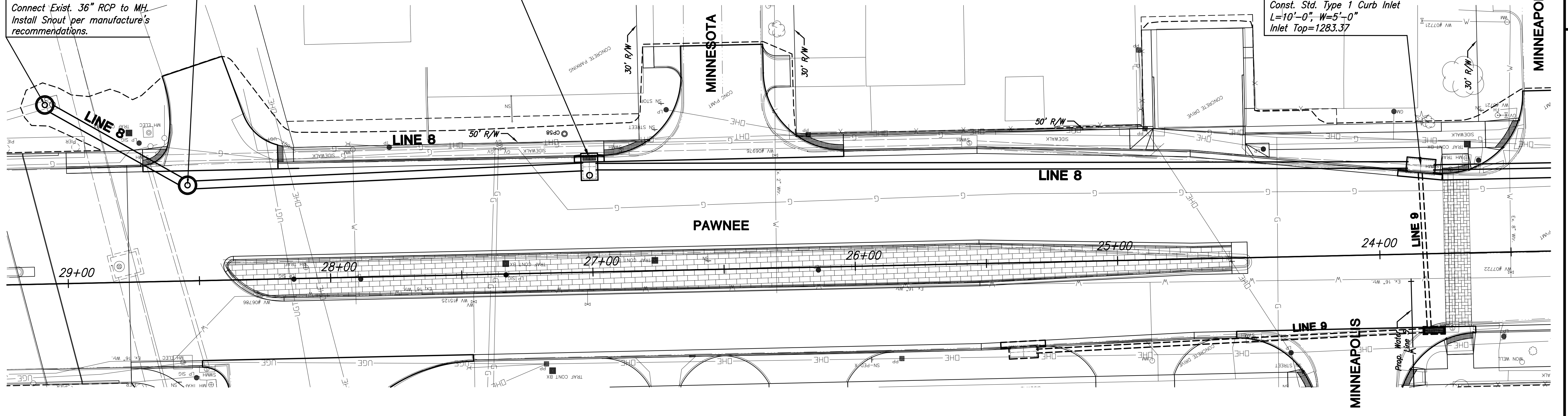
Sta. 10+00.00, Line 8=  
 Ⓟ Sta. 29+07.46, 68.28' Rt.  
 Const. Std. Manhole w/  
 BMP, Inc. Model 52RTB72  
 Shout or approved equal.  
 Dia.=6'-0"  
 MH Top=1286.20  
 MH Floor=1268.64  
 Connect Exist. 36" RCP to MH.  
 Install Shout per manufacturer's  
 recommendations.

Sta. 10+62.41, Line 8=  
 Ⓟ Sta. 28+53.75, 36.50' Rt.  
 Const. Std. Manhole  
 Dia.=6'-0"  
 MH Top=1285.66

Sta. 12+15.73 Line 8=  
 Ⓟ Sta. 27+00.48 43.67' Rt.  
 Const. Special Type II Inlet/  
 Manhole  
 Inlet L=6'-4", W=7'-0"  
 Inlet Top=1284.45  
 MH Top=1284.25

STATE	PROJECT NO.	YEAR	SHEET NO.	TOTAL SHEETS
KANSAS	87 N-0597-01	2016	31	191

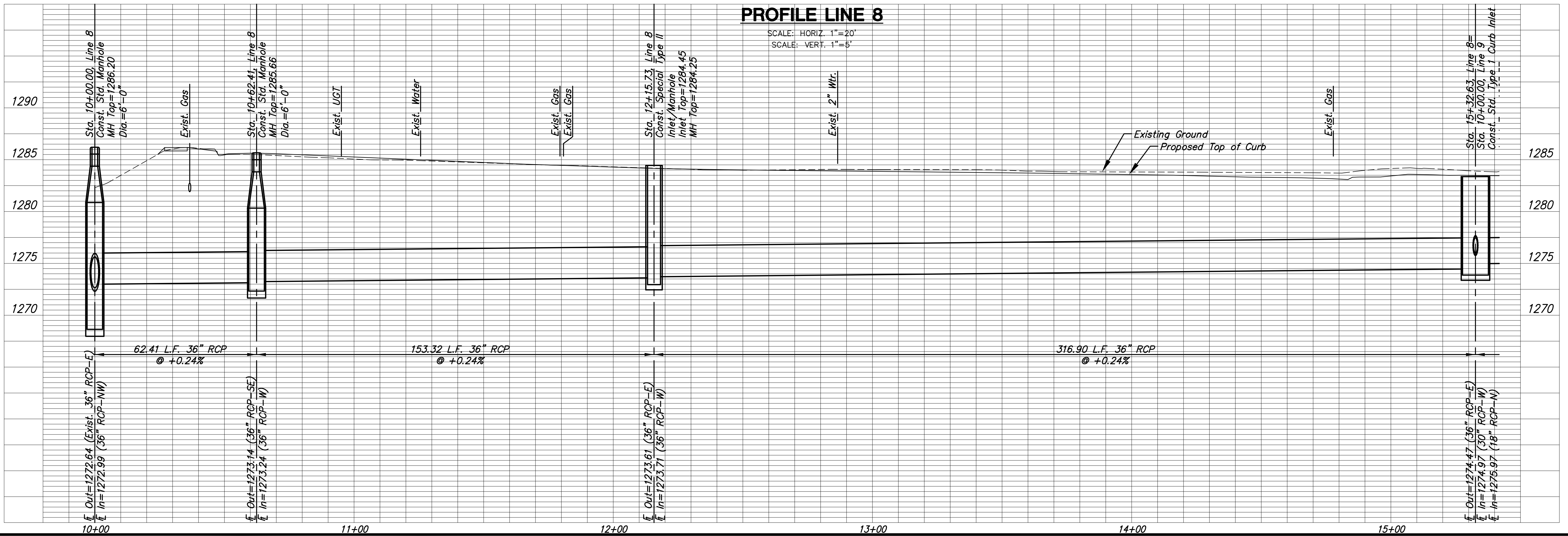
Sta. 15+32.63, Line 8=  
 Ⓟ Sta. 23+83.67, 33.45' Rt.  
 Const. Std. Type 1 Curb Inlet  
 L=10'-0", W=5'-0"  
 Inlet Top=1283.37



PLAN LINE 8

PROFILE LINE 8

SCALE: HORIZ. 1"=20'  
 SCALE: VERT. 1"=5'



STREET IMPROVEMENTS FOR:  
**PAWNEE AVENUE**  
**FROM HYDRAULIC TO POPLAR**  
 WICHITA, KANSAS

©2013  
 MKEC Engineering  
 All Rights Reserved  
 www.mkec.com  
 These drawings and their contents,  
 including, but not limited to, all concepts,  
 designs, & ideas are the exclusive  
 property of MKEC Engineering (MKEC),  
 and may not be used or reproduced in any  
 way without the express consent of MKEC.

STORM SEWER  
 LINE 8

PROJECT NO.	87 N-0597-01	
DATE	DATE	
SCALE	1"=20' HOR/1"=5' VERT	
DESIGNED	DRAWN	CHECKED
JRA	JSB	JRA

NO.	REVISION	DATE

SHEET NO.  
 31 OF 191



J:\CIVIL\05745\DWGS\SW\05745SW-01.DWG