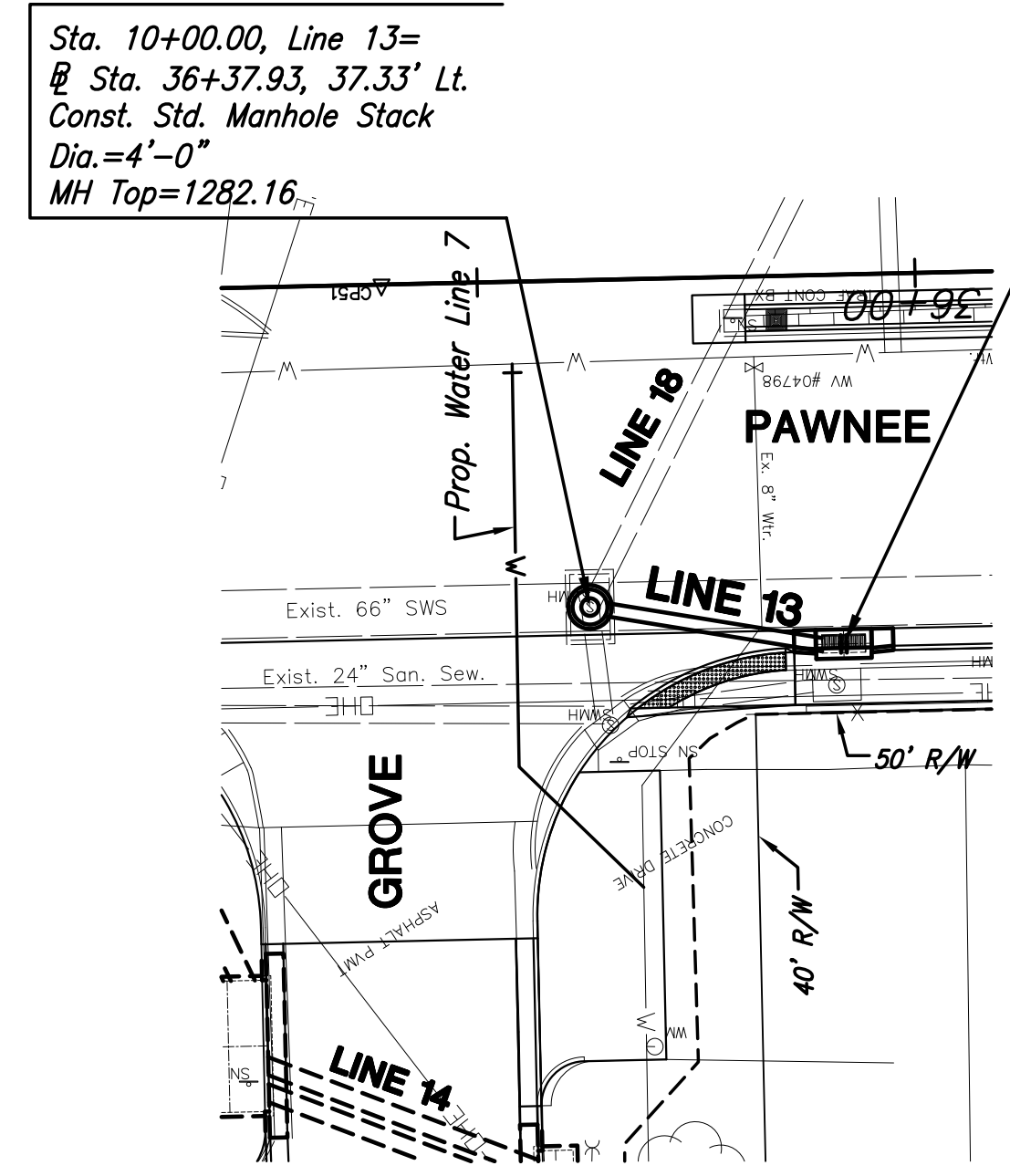


PLOTTED: Monday, May 09, 2016 @ 11:38AM  
 J:\CIVIL\05745\DWGS\SW\05745\SW5-DOT.DWG

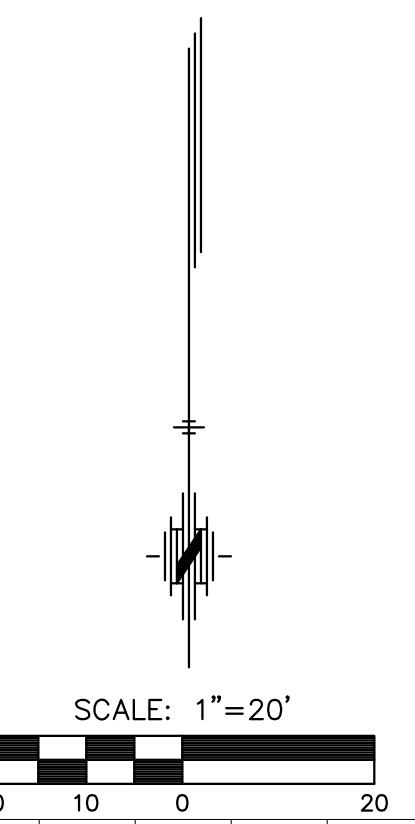
STATE	PROJECT NO.	YEAR	SHEET NO.	TOTAL SHEETS
KANSAS	87 N-0597-01	2016	34	191



**PLAN LINE 13**

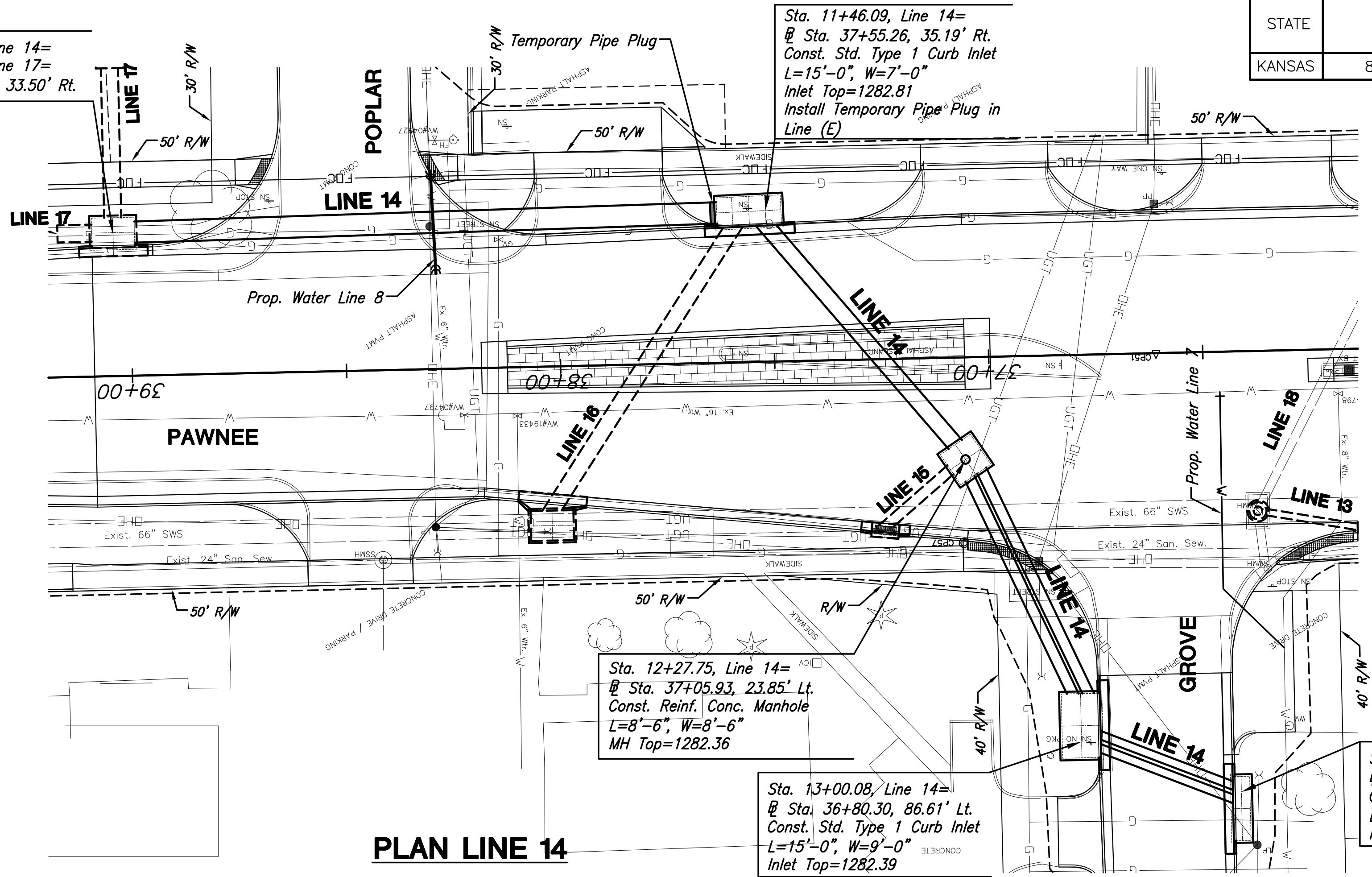
**PROFILE LINE 13**

SCALE: HORIZ. 1"=20'  
SCALE: VERT. 1"=5'



Sta. 10+00.00, Line 14=  
Sta. 10+43.00, Line 17=  
Sta. 39+03.81, 33.50' Rt.

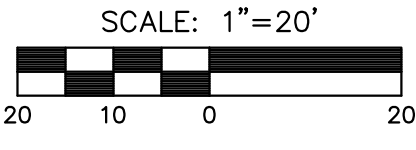
Sta. 10+29.25, Line 13=  
Sta. 36+09.06, 42.17' Lt.  
Const. Std. Dbl. Type 2 Curb Inlet  
L=6'-4", W=3'-4"  
Inlet Top=1282.53



**PLAN LINE 14**

**PROFILE LINE 14**

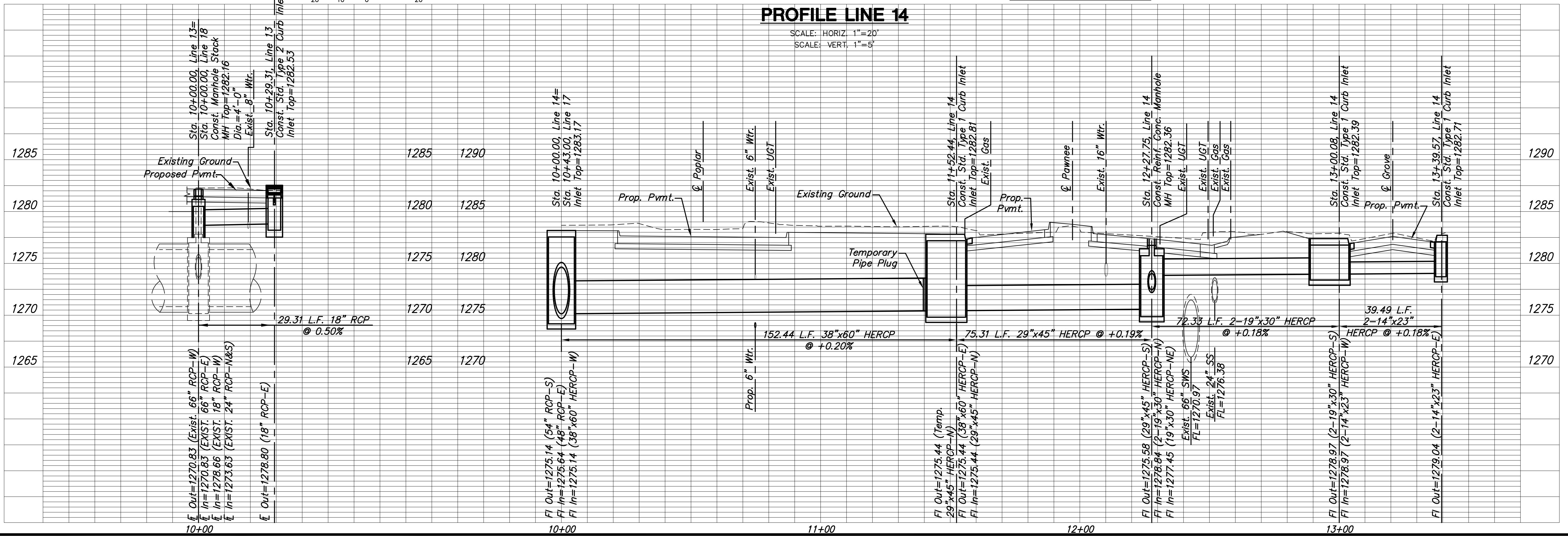
SCALE: HORIZ. 1"=20'  
SCALE: VERT. 1"=5'



Sta. 13+39.57, Line 14=  
Sta. 36+43.22, 102.89 Lt.  
Const. Std. Type 1 Curb Inlet  
L=15'-0", W=4'-0"  
Inlet Top=1282.71

Sta. 12+27.75, Line 14=  
Sta. 37+05.93, 23.85' Lt.  
Const. Reinf. Conc. Manhole  
L=8'-6", W=8'-6"  
MH Top=1282.36

Sta. 13+00.08, Line 14=  
Sta. 36+80.30, 86.61' Lt.  
Const. Std. Type 1 Curb Inlet  
L=15'-0", W=9'-0"  
Inlet Top=1282.39



STREET IMPROVEMENTS FOR:  
**PAWNEE AVENUE**  
**FROM HYDRAULIC TO POPLAR**  
 WICHITA, KANSAS

©2013  
 MKEC Engineering  
 All Rights Reserved  
 www.mkec.com  
 These drawings and their contents, including, but not limited to, all concepts, designs, & ideas are the exclusive property of MKEC Engineering (MKEC), and may not be used or reproduced in any way without the express consent of MKEC.

**STORM SEWER LINE 13 & LINE 14**

PROJECT NO.	87 N-0597-01	
DATE	DATE	
SCALE	1"=20' HOR/1"=5' VERT	
DESIGNED	DRAWN	CHECKED
JRA	JSB	JRA
NO.	REVISION	DATE