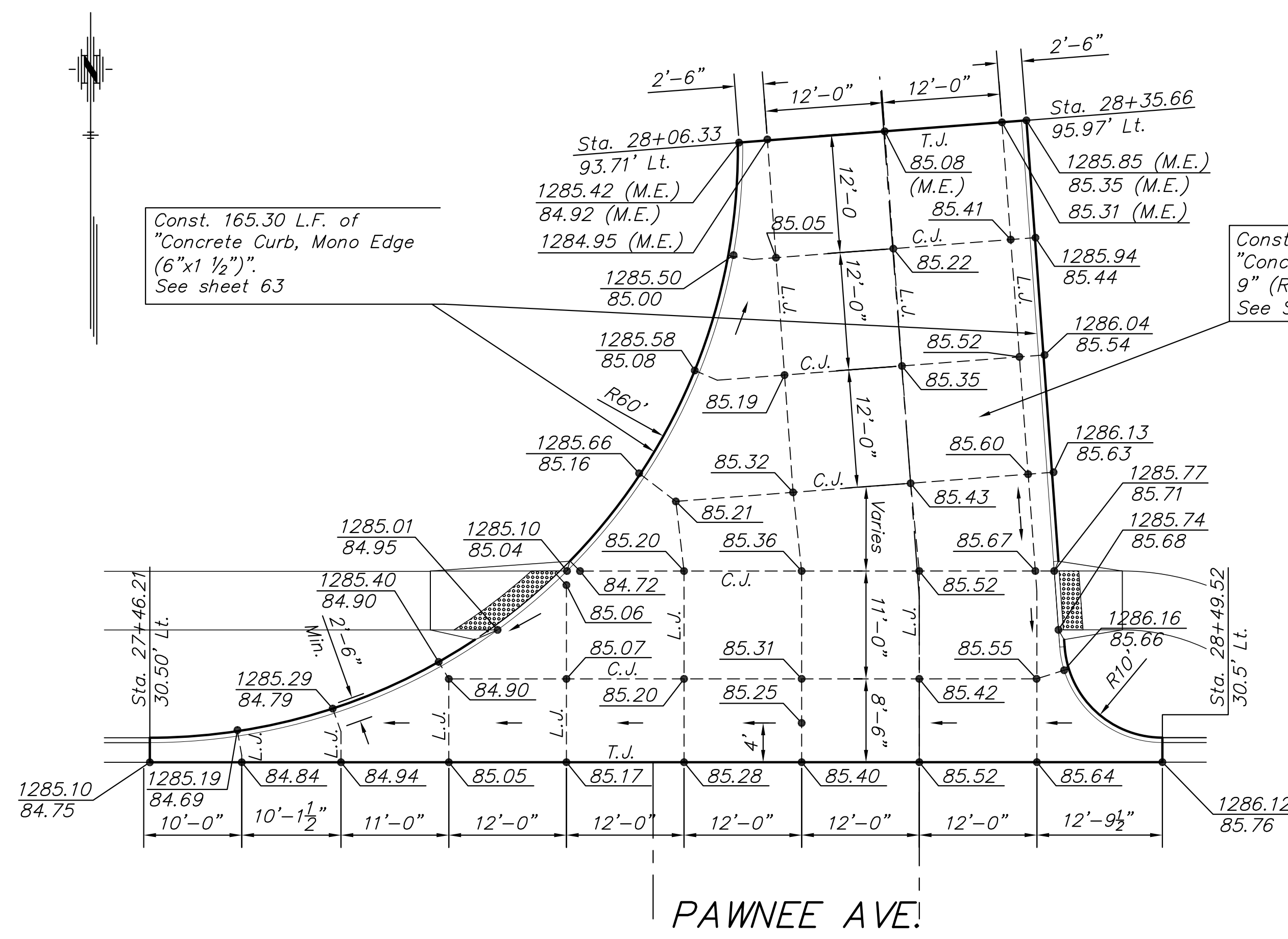
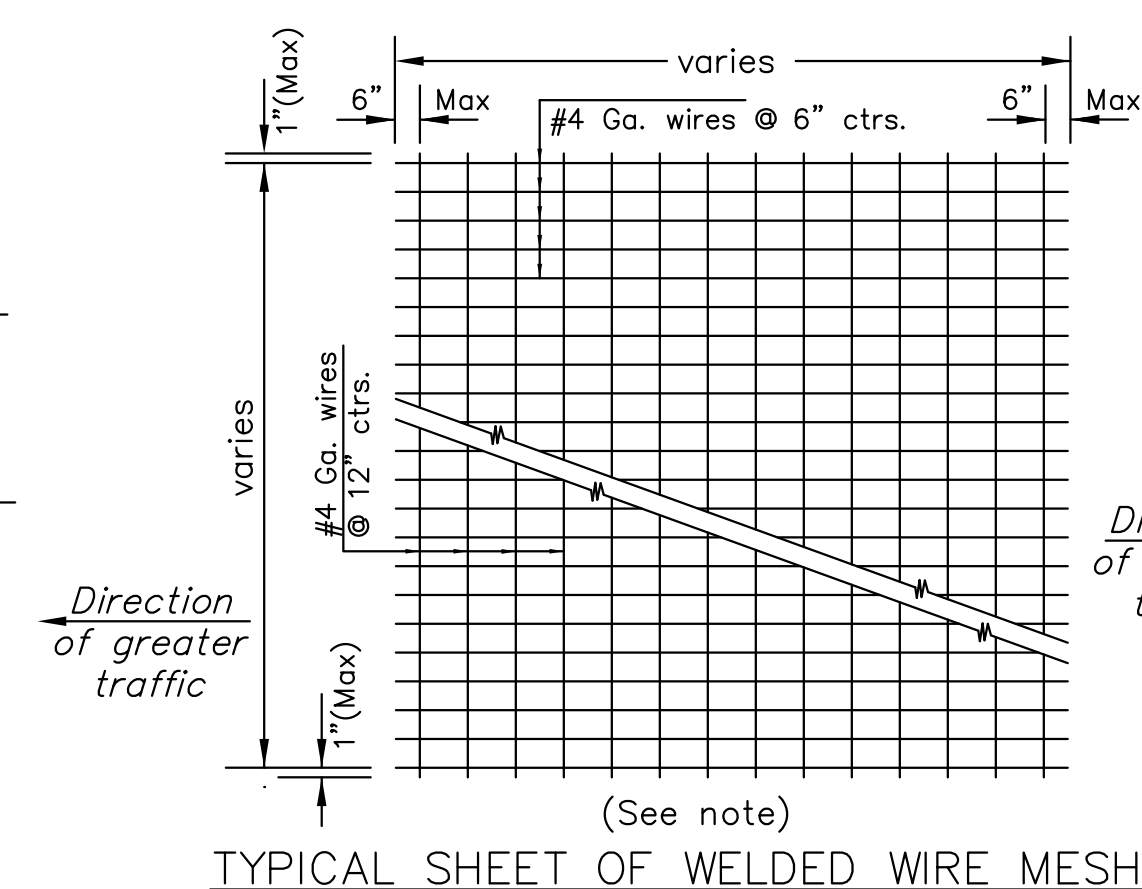


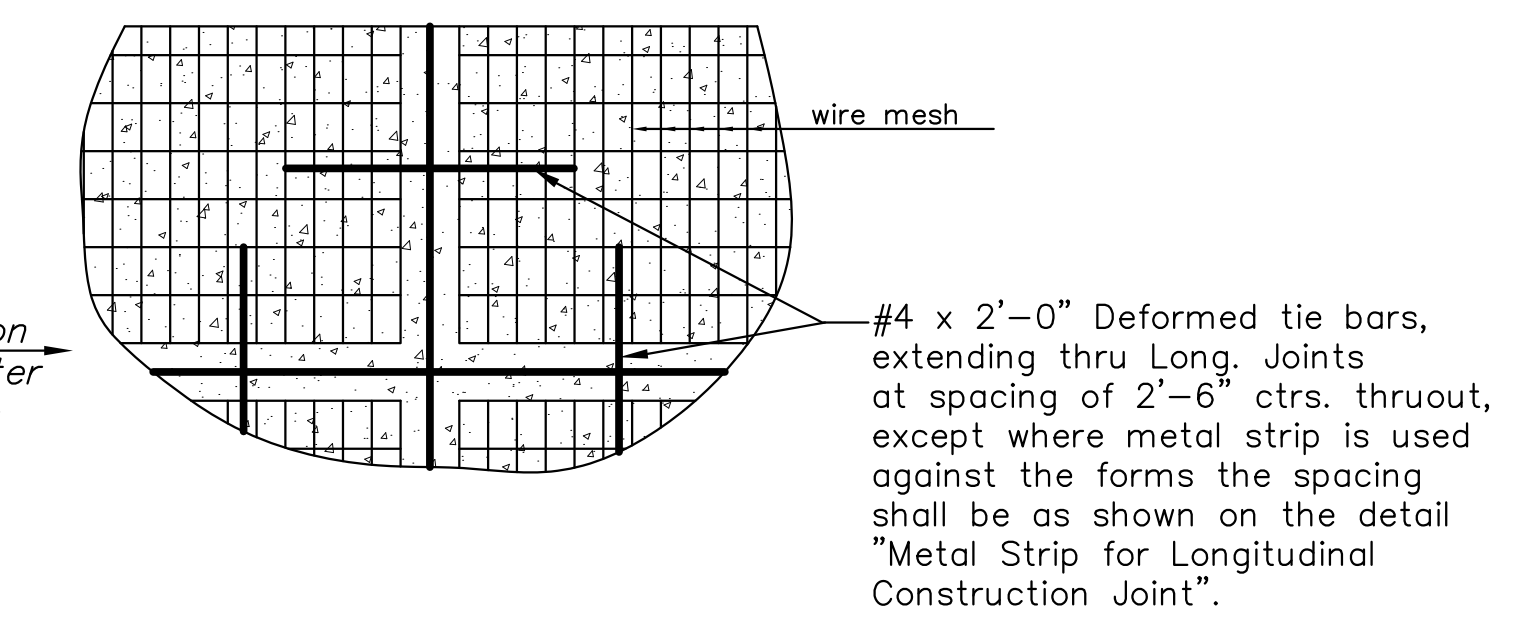
STATE	PROJECT NO.	YEAR	SHEET NO.	TOTAL SHEETS
KANSAS	87 N-0597-01	2016	46	191



I-135 S.B OFF RAMP
Scale: 1"=10'



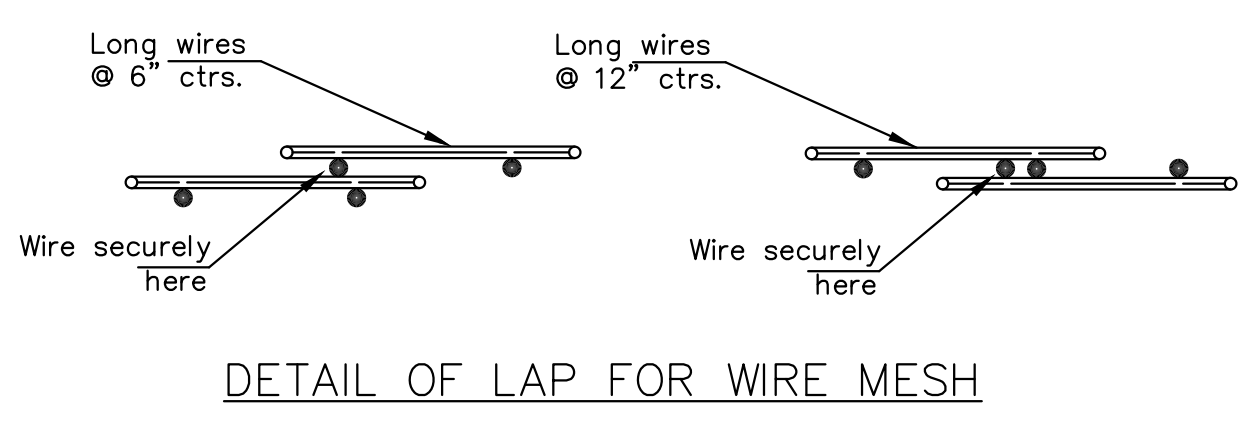
TYPICAL SHEET OF WELDED WIRE MESH



WIRE MESH AND TIE BAR PLACEMENT

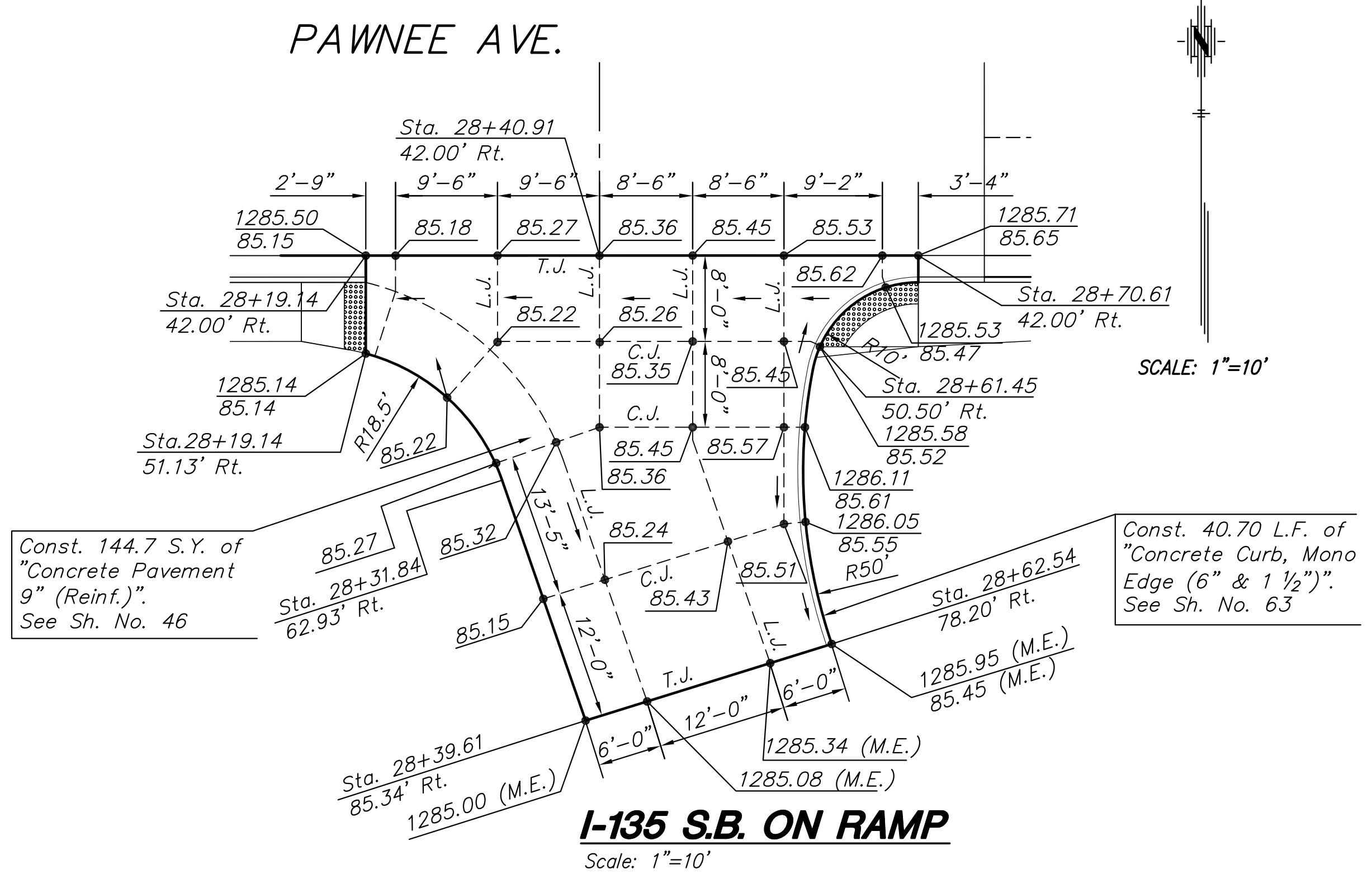
LEGEND

- C.J. = Contraction Joint
- L.J. = Longitudinal Joint
- I.J. = Isolation Joint
- T.J. = Tied Construction Joint
- D.E.J. = Doweled Expansion Joint
- = Valley Gutter Flow Direction

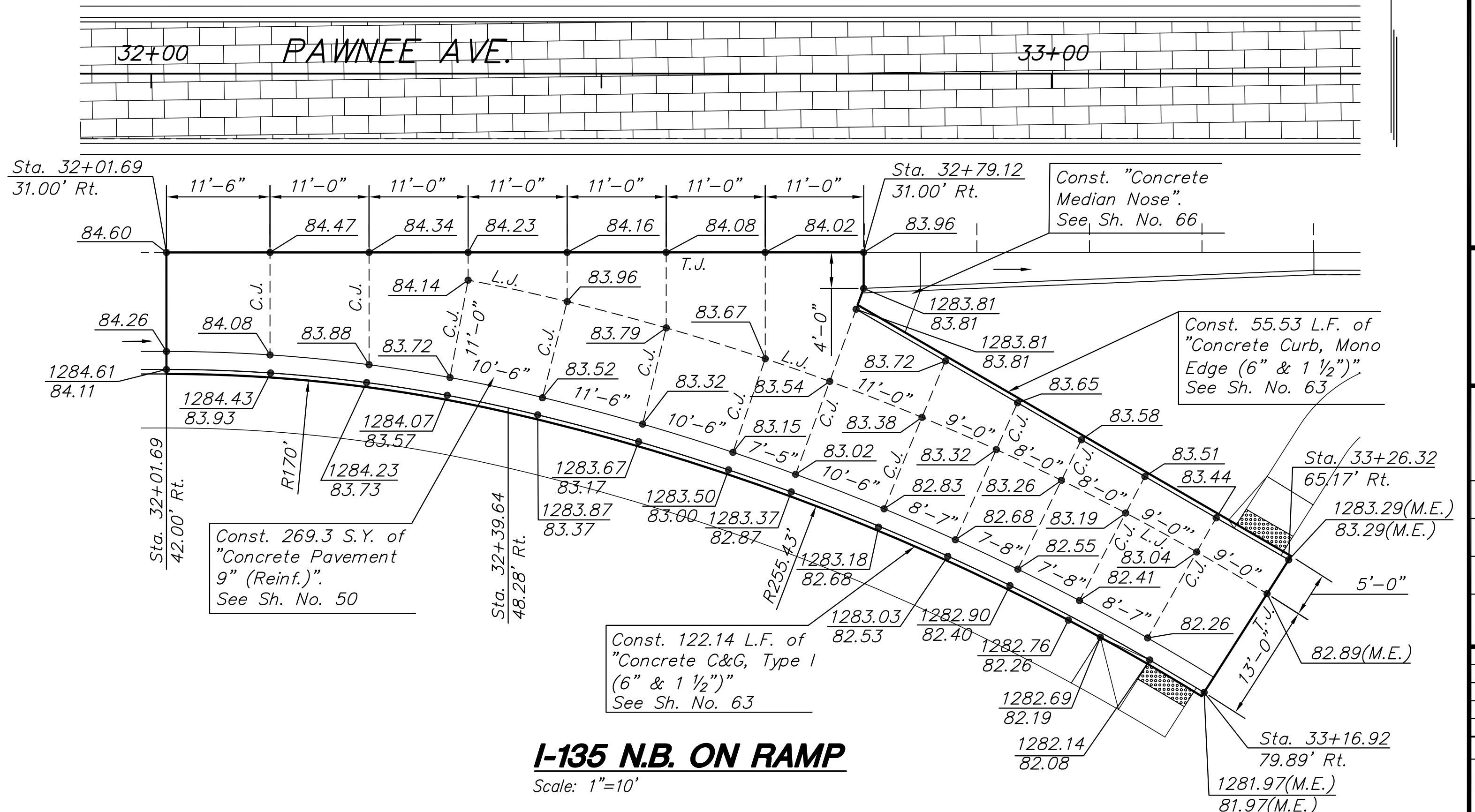


DETAIL OF LAP FOR WIRE MESH

NOTE: The lap shall extend beyond the first transverse wire of each sheet.
The sheets shall be wired securely at the edges and at intervals not to exceed 2'-6" for the full width of the sheet. Approx. weight of wire mesh = 44 lbs. per 100 sq. ft.
Other methods for fastening the sheets of wire mesh at the laps may be used with the approval of the Engineer.



I-135 S.B. ON RAMP
Scale: 1"=10'



I-135 N.B. ON RAMP
Scale: 1"=10'

STREET IMPROVEMENTS FOR:
PAWNEE AVENUE
FROM HYDRAULIC TO POPLAR
WICHITA, KANSAS

©2013 MKEC Engineering
All Rights Reserved
www.mkec.com
These drawings and their contents, including, but not limited to, all concepts, designs, & ideas are the exclusive property of MKEC Engineering (MKEC), and may not be used or reproduced in any way without the express consent of MKEC.

INTERSECTION PLAN - RAMPS

PROJECT NO.	87 N-0597-01	
DATE	DATE	
SCALE	1"=10'	
DESIGNED	DRAWN	CHECKED
JRA	JSB	JRA
NO.	REVISION	DATE