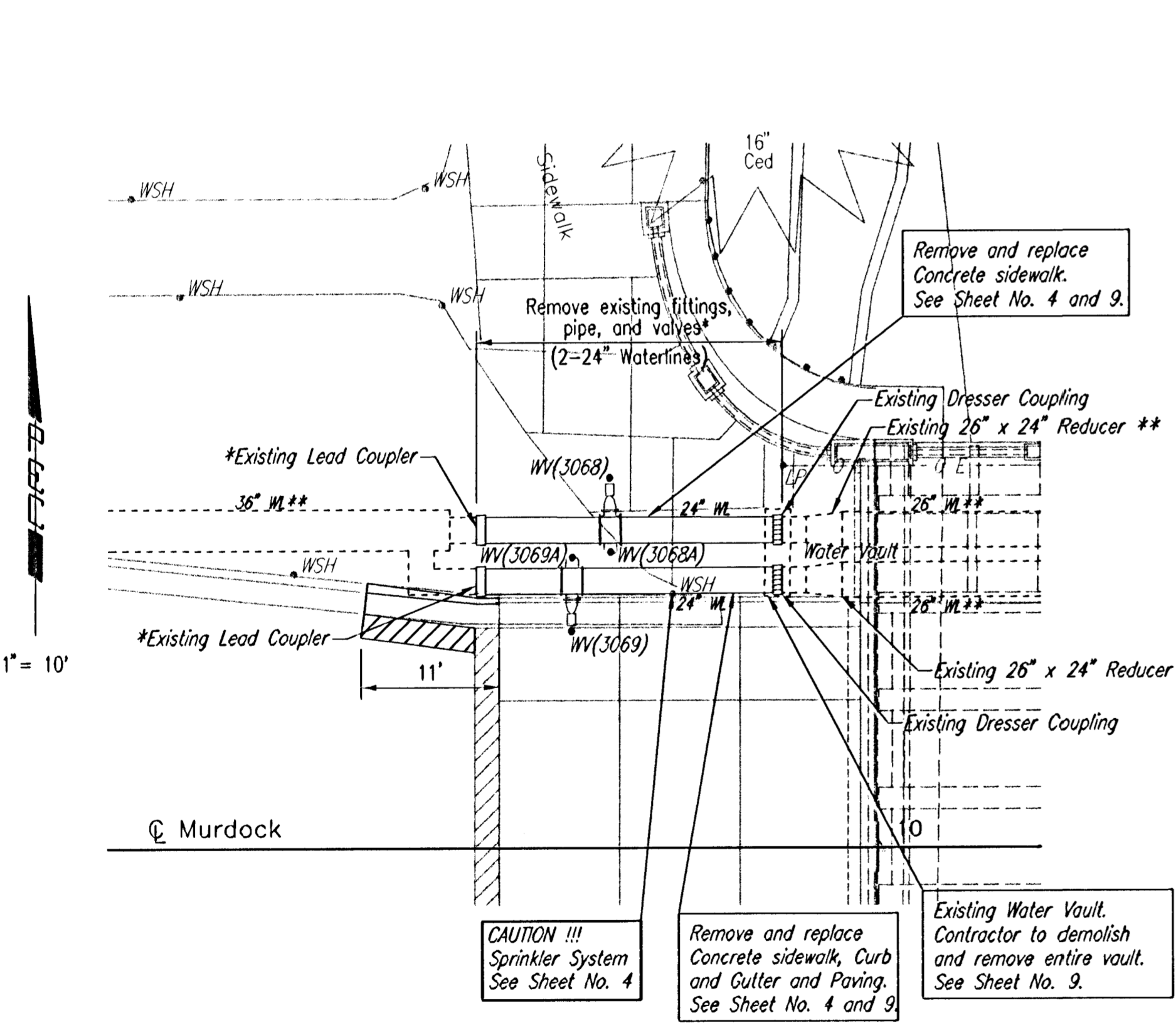


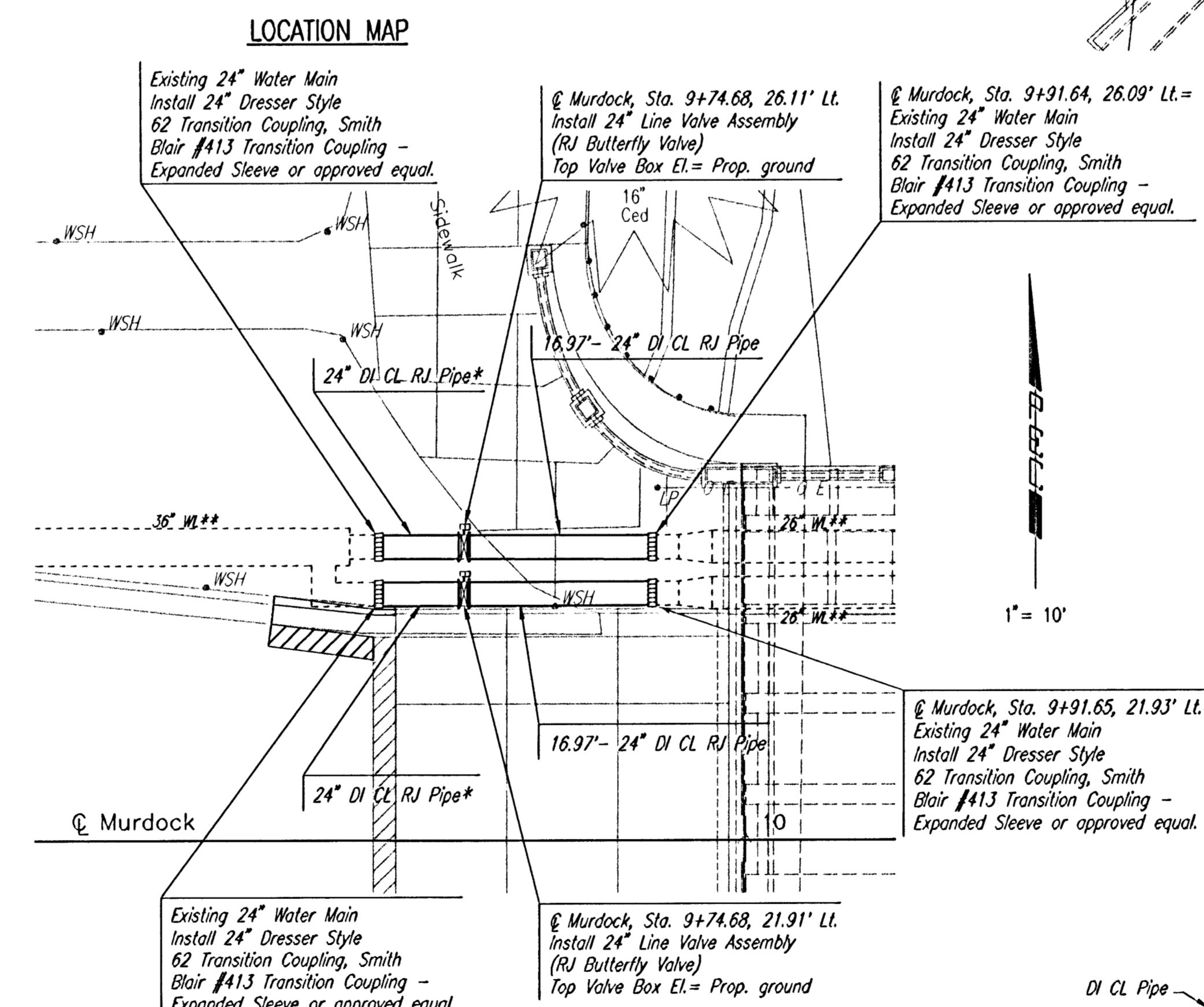
- GENERAL NOTES**
- CONTRACTOR WILL BE REQUIRED TO PROVIDE A MINIMUM ADVANCE NOTICE OF FORTY-EIGHT (48) HOURS TO UTILITY COMPANIES PRIOR TO STARTING ANY EXCAVATION AS FOLLOWS:
 KANSAS ONE-CALL 687-2470
 THE CONTRACTOR MUST NOTIFY THE FOLLOWING IN CASE OF AN EMERGENCY:
 COX COMMUNICATIONS 262-0661
 KANSAS GAS SERVICE 832-3169
 WESTAR ENERGY 1800-527-0357
 AQUILA NETWORK 1(800)-870-8390
 SBC 1(800)-870-8390
 CITY OF WICHITA WATER DEPARTMENT 262-6000
 CITY OF WICHITA SEWER MAINTENANCE 262-6000
 - ALL WATER MAINS AND APPURTENANCES SHALL BE INSTALLED IN ACCORDANCE WITH CITY OF WICHITA STANDARD SPECIFICATIONS. ALL WATER MAIN PIPE SHALL BE RESTRAINED JOINT MIN. PRESSURE CLASS 250 DUCTILE IRON PIPE. RESTRAINED JOINT PIPE SHALL BE EQUAL TO U.S. PIPE OR FLEX RESTRAINED JOINTS, AMERICAN LOK-RING RESTRAINED JOINTS OR APPROVED EQUAL. ALL WATER MAINS AFFECTED BY CONSTRUCTION SHALL BE HYDROSTATICALLY TESTED AND DISINFECTED IN ACCORDANCE WITH CITY OF WICHITA STANDARD SPECIFICATIONS. THE CONTRACTOR SHALL COORDINATE WITH THE PROJECT INSPECTOR FOR DISPOSAL OF WATER. HIGHLY CHLORINATED WATER SHALL NOT BE DISCHARGED DIRECTLY INTO THE RIVER.
 - THE WATER MAIN SHALL BE CONSTRUCTED ON THE ALIGNMENT SHOWN BY THE PLANS.
 - OPENING AND CLOSING WATER VALVES SHALL BE DONE SLOWLY TO PREVENT DAMAGE TO THE WATER DISTRIBUTION SYSTEM FROM WATER HAMMER. ALL VALVES CLOSED BY THE CONTRACTOR MUST BE REOPENED AS NEW CONSTRUCTION PERMITS. PROJECT INSPECTOR MUST ASCERTAIN THAT ANY VALVE CLOSED BY THE CONTRACTOR IS REOPENED. CONTRACTOR WILL BE PERMITTED TO OPERATE WATER VALVES ONLY WHEN THE PROJECT INSPECTOR ASSIGNED TO THE PROJECT IS PRESENT.
 - THE CONTRACTOR SHALL NOT START WORK ON THE PROJECT UNTIL THE PROJECT INSPECTOR IS ASSIGNED TO THE PROJECT AND IS PRESENT ON THE SITE. ANY WORK DONE WITHOUT INSPECTION WILL BE REQUIRED TO BE UNCOVERED FOR INSPECTION.
 - THE TEST PRESSURE FOR THE NEWLY CONSTRUCTED WATERLINE SHALL BE 150 PSI, AND ALL FITTINGS, PIPE, AND APPURTENANCES INSTALLED SHALL HAVE A PRESSURE RATING OF 150 PSI (MIN).
 - THE CONTRACTOR SHALL RESTRAIN ALL COUPLINGS, VALVES, AND FITTINGS THROUGH THE USE OF A RESTRAINED JOINT PIPE AS SPECIFIED. OTHER METHODS OF RESTRAINT MAY BE SUBMITTED IN WRITING TO THE DESIGN ENGINEER FOR APPROVAL AT LEAST 7 DAYS PRIOR TO BIDDING. RESTRAINED JOINT PIPE WILL NOT BE BID SEPARATELY AND SHALL BE INCLUDED IN THE PRICE BID FOR PIPE IN PLACE.
 - THE CONTRACTOR SHALL PROVIDE THREADED RODS AND COLLARS TO ANCHOR VALVES AND SLEEVES TO PROPOSED RESTRAINED JOINT PIPING, AS SHOWN IN THE PLANS. THREADED RODS AND COLLARS SHALL BE HIGH STRENGTH, HEAT TREATED CORTEN STEEL AND SHALL CONFORM TO ASTM A242, TYPE 2, AS MANUFACTURED BY STAR NATIONAL PRODUCTS OR APPROVED EQUAL. THE NUMBER OF TIEBOLT RESTRAINERS AND FASTENING METHOD SHALL BE IN ACCORDANCE WITH THE MANUFACTURERS RECOMMENDATIONS. TIE BOLTS SHALL BE DESIGNED FOR A TOTAL DESIGN PRESSURE OF 200 PSI.
 - ALL COUPLINGS INSTALLED SHALL INCLUDE A 1/2" GAP BETWEEN THE PLAIN END PIPES BEING JOINED.
 - ALL FITTINGS INSTALLED SHALL NOT BE BACKFILLED UNTIL THE FIELD ENGINEER ESTABLISHES TIES TO ESTABLISHED LANDMARKS.
 - ALL ITEMS ASSOCIATED WITH REMOVAL AND REPLACEMENT OF THE EXISTING WATER LINES, INCLUDING BUT NOT LIMITED TO, PIPING, FITTINGS, VALVES, MISCELLANEOUS APPURTENANCES, REMOVAL AND DISPOSAL OF EXISTING WATERLINE MATERIALS AS DETAILED OR SHOWN TO BE REMOVED, AND ANY OTHER INCIDENTALS OR OTHER ITEMS SPECIFIED SHALL BE INCLUDED IN THE LUMP SUM PRICE BID FOR "WATERLINE REPLACEMENT".



WL REMOVAL PLAN

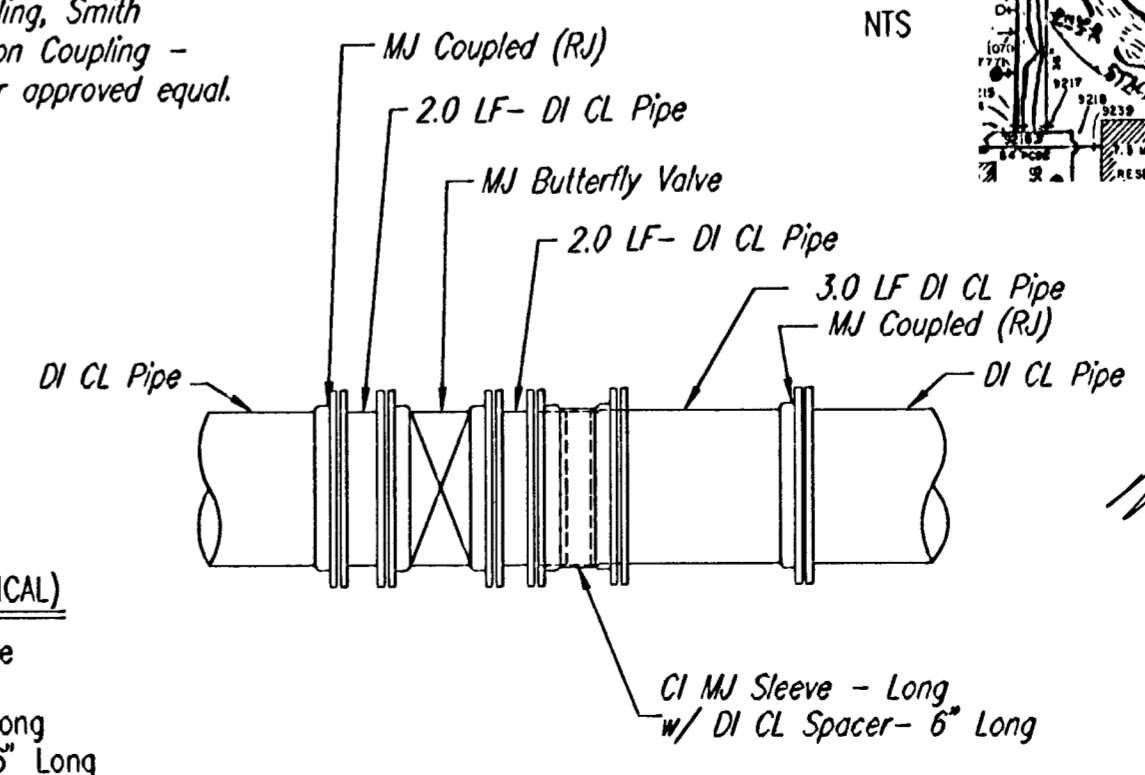
* PRIOR TO ORDERING MATERIALS OR BEGINNING CONSTRUCTION, THE CONTRACTOR SHALL EXCAVATE THE EXISTING 24" WATERLINES TO VERIFY LOCATION OF EXISTING COUPLINGS AND FITTINGS, PIPE SIZE, TYPE, AND HORIZONTAL AND VERTICAL LOCATION. THE CONTRACTOR SHALL REPORT HIS FINDINGS TO THE ENGINEER SO THAT ANY NECESSARY PLAN MODIFICATIONS MAY BE MADE. ANY ADDITIONAL LABOR OR MATERIALS NECESSARY TO COMPLETE THE CONNECTION SHALL BE CONSIDERED SUBSIDIARY TO THE PROJECT.

** RECORD INFORMATION



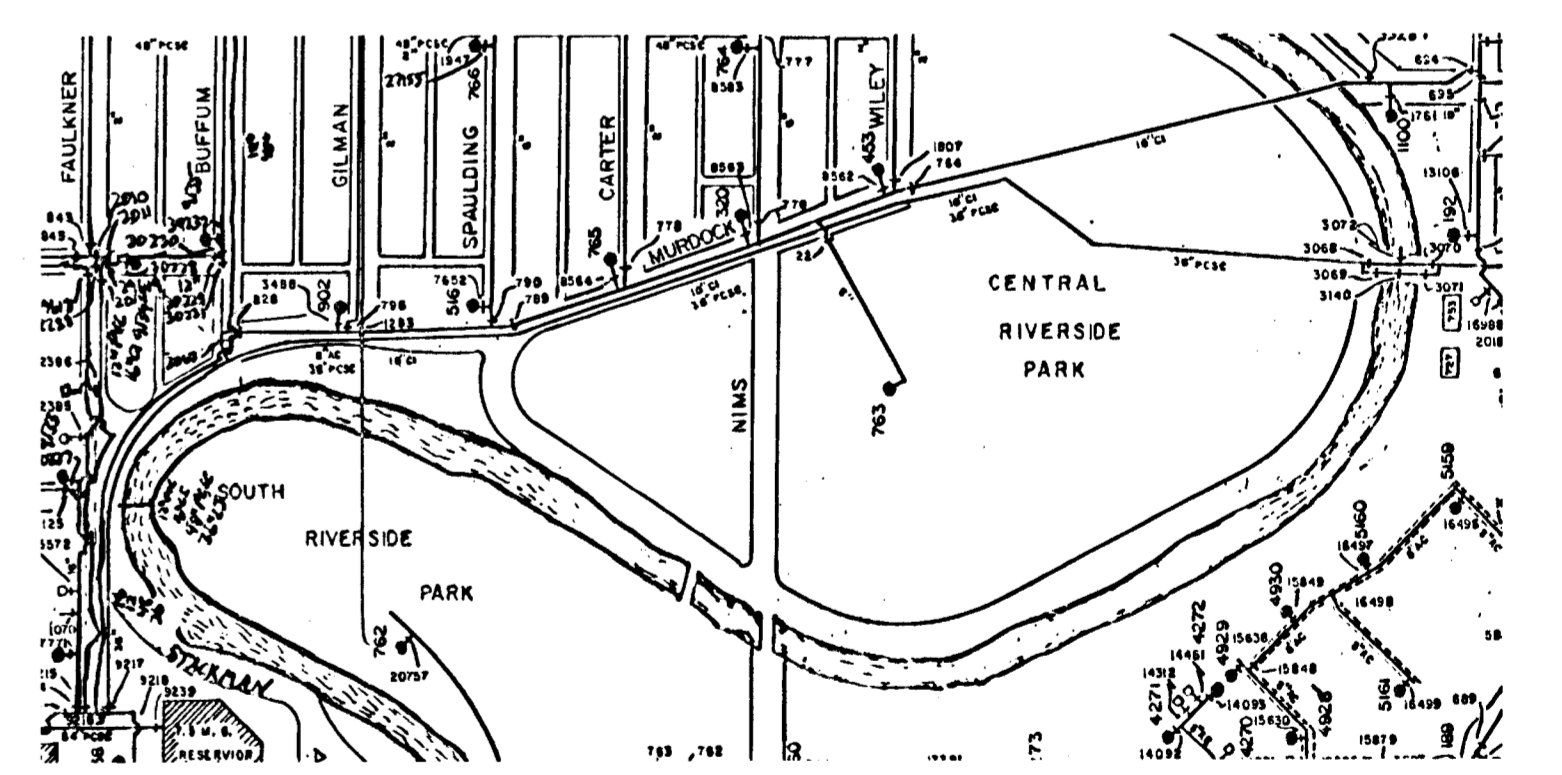
WL CONNECTION PLAN

- MATERIALS LIST (TYPICAL)**
- 1 - MJ Butterfly Valve
 - 1 - 6" Valve Box
 - 1 - CI MJ Sleeve - Long
 - 1 - DI CL Spacer - 6" Long
 - 7' - of DI CL SJ Pipe

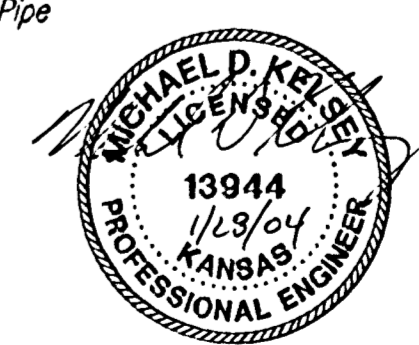


LINE VALVE DETAIL

THE CONTRACTOR SHALL UTILIZE RESTRAINED JOINT PIPE AND TIE RODS TO RESTRAIN ALL PIPING AT THE VALVE LOCATIONS.



CITY OF WICHITA WATERLINE MAP



No.	Revisions	By	Date
1			

CITY OF WICHITA, KANSAS
 JAMES L. ARMOUR, P.E. - ACTING CITY ENGINEER
MURDOCK BRIDGE
OVER LITTLE ARKANSAS RIVER
WATERLINE REPLACEMENT

CITY OF WICHITA PROJECT NO. 472-83895 AND 448-89900

Professional Engineering Consultants, P.A.
 303 S. TOPERA • WICHITA, KANSAS 67202
 316-262-2691 • FAX 316-262-3003

Designed by	M.D.K.	Checked by	M.D.K.
Drawn by	T.R.O.	Date	July 2003
		Job No.	96940-35