

STA. 10+069.399, 18.876 m RT. SAW CUT AND REMOVE EXISTING DRIVE AS SHOWN AND CONSTRUCT FULL RADIUS DRIVE. SEE DRIVE ENTRANCE SCHEDULE, SHEET NO. 2

OWNER: PAUL W. & HAZEL J. DICKS  
DEED BK 1207, PG 135

STA. 10+103.765, 15.240 m RT. SAW CUT AND REMOVE EXISTING DRIVE AS SHOWN AND CONSTRUCT FULL RADIUS DRIVE. SEE DRIVE ENTRANCE SCHEDULE, SHEET NO. 2

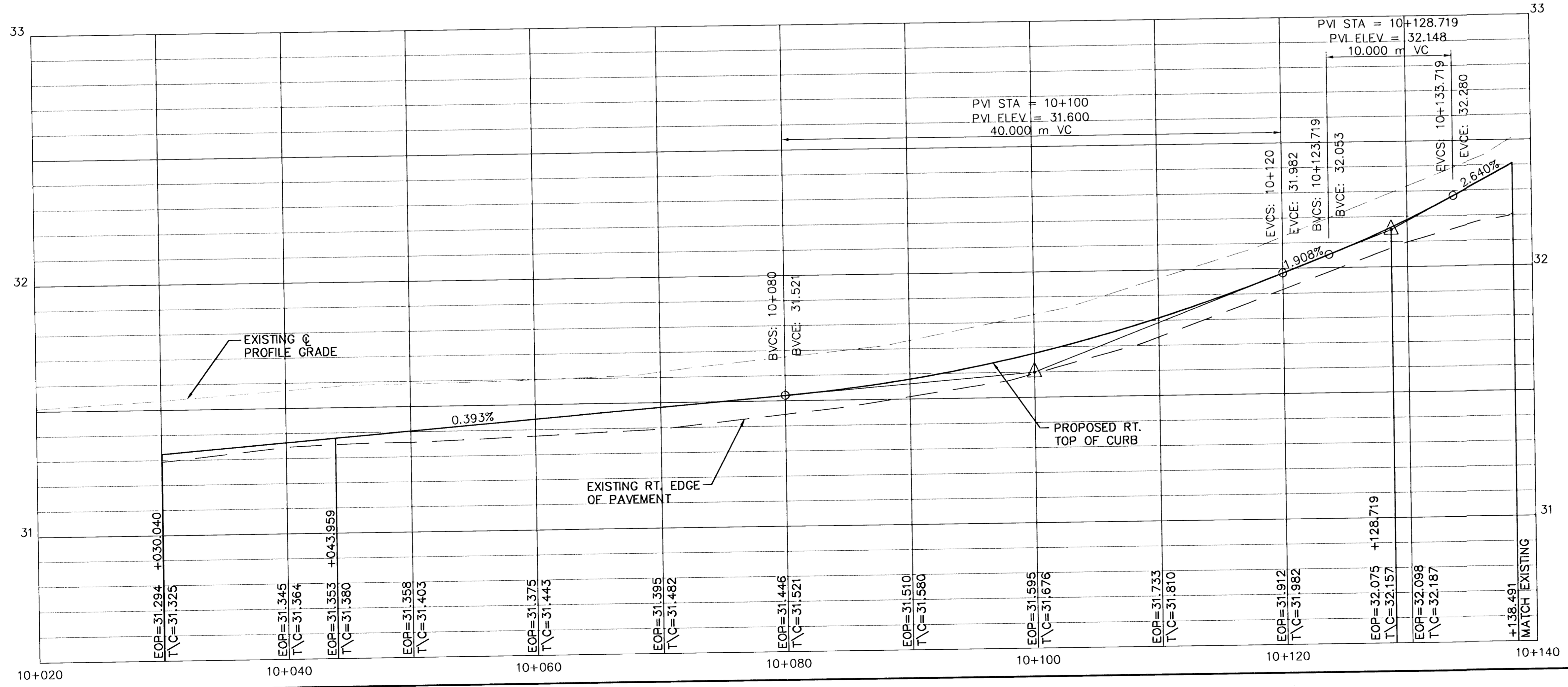
OWNER: PAUL W. & HAZEL J. DICKS  
DEED BK 1207, PG 135

STA. 10+130.825, 15.240 m RT. SAW CUT AND REMOVE EXISTING DRIVE AS SHOWN AND CONSTRUCT FULL RADIUS DRIVE. SEE DRIVE ENTRANCE SCHEDULE, SHEET NO. 2

NOTE:  
CONTRACTOR TO PROVIDE WATERTIGHT CONNECTION BETWEEN INLET AND EXISTING STORM SEWER

SCALE  
PLAN: 1:200  
PROFILE: 1:200 HORIZ.  
1:10 VERT.

SEE SHEET NO. 41-42 FOR PAVEMENT MARKING PLAN



Plotted By : J. TRUMPP  
Plot File : 2232GWB  
Plot Date : 4-25-02  
Server :  
View =

**GEORGE WASHINGTON BOULEVARD  
STA. 10+090 TO STA. 10+150**

**KAW VALLEY ENGINEERING**  
ENGINEERS AND LAND SURVEYORS  
2519 NORTH JACKSON  
P.O. BOX 1304  
JUNCTION CITY, KANSAS 66441  
(785)762-5040 FAX (785)762-7744  
E-MAIL j@kveng.com

PROJ. NO. A02232
DATE 4-25-02
DESIGNER CDM
DRAWN BY JT
CHECKED BY
CFN
2232GWB
SHEET 5 OF 59