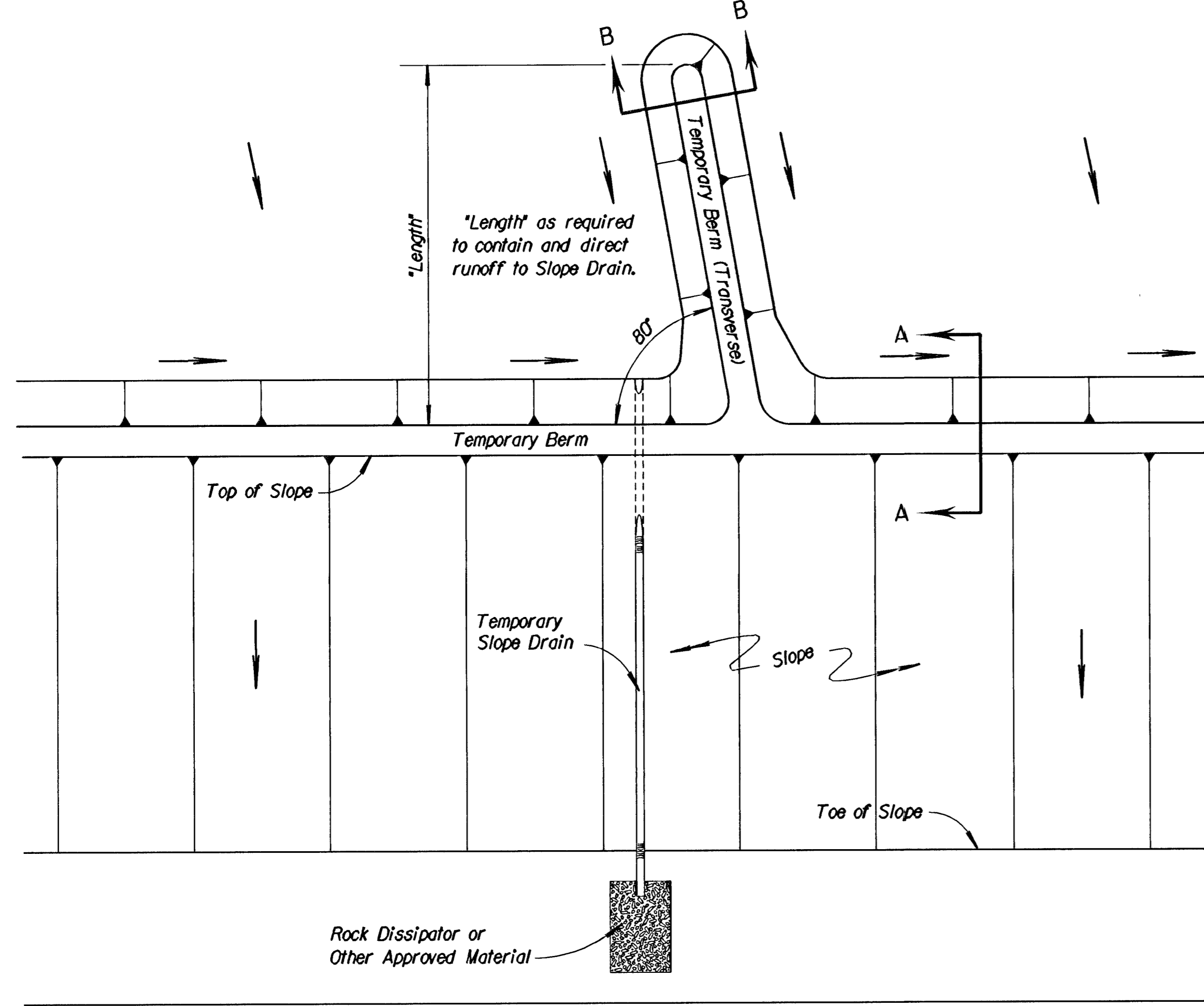
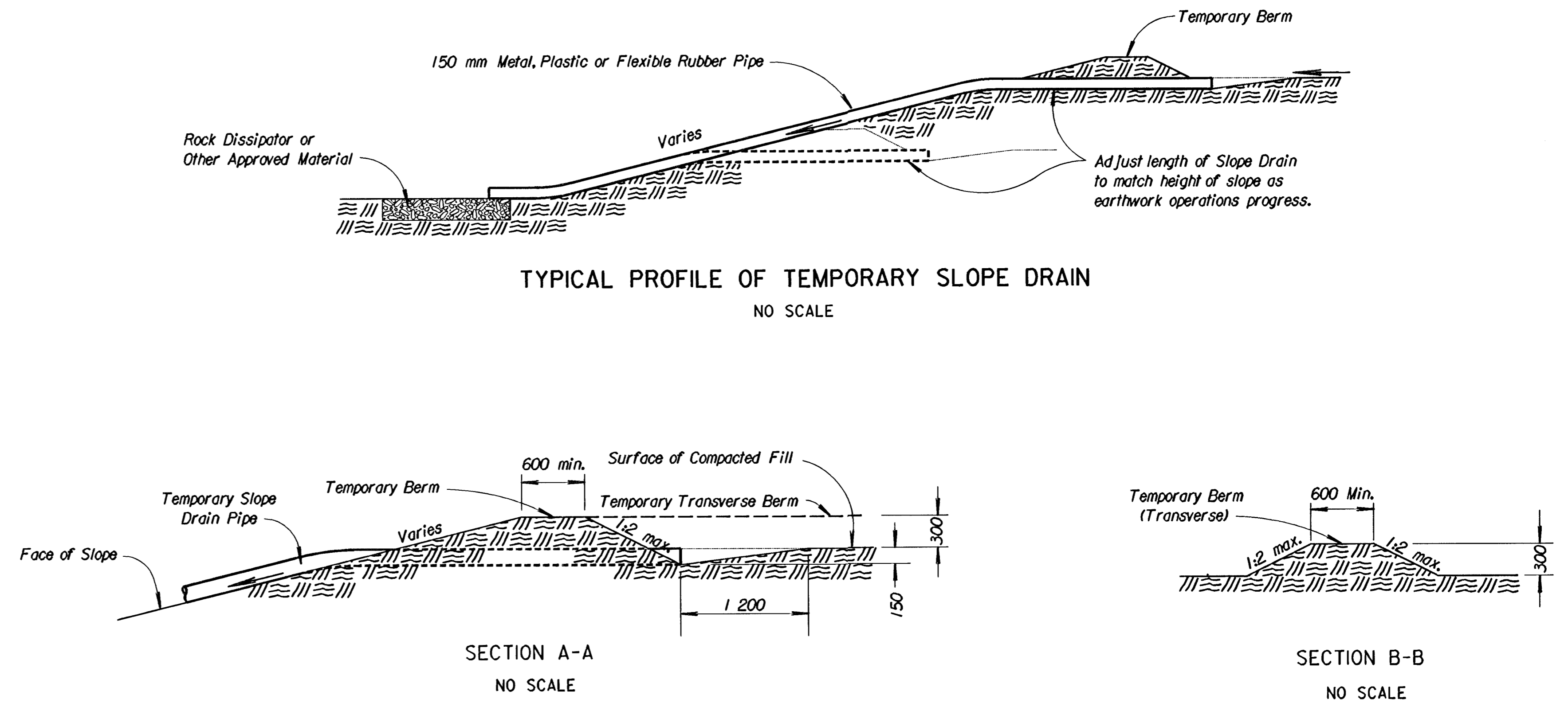


FHWA REGION NO.	STATE	PROJECT NO.	YEAR	SHEET NO.	TOTAL SHEETS
7	KANSAS	87 N-0212-01	2002	19	59

- NOTES:
- 1) Temporary Slope Drain and Temporary Berm may be used on either project foreslopes or project backslopes.
 - 2) Discharge of Slope Drains shall be into stabilized ditch or area, or into Sediment Basin.
 - 3) Pipe shall be secured in place as approved by Engineer.

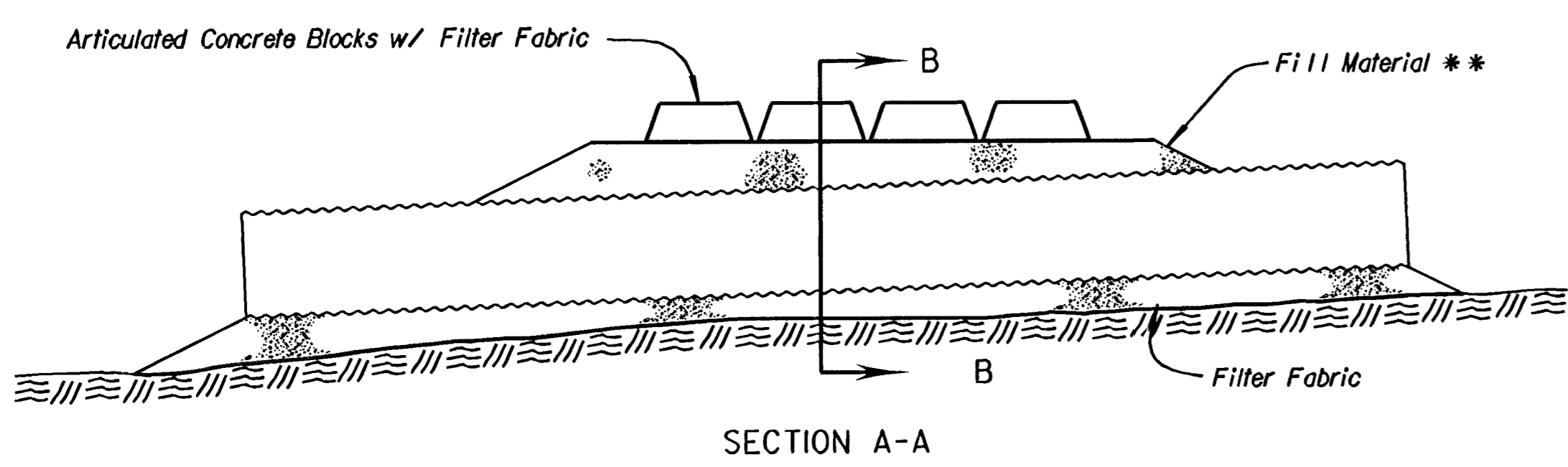


TYPICAL PLAN VIEW OF TEMPORARY BERM AND TEMPORARY SLOPE DRAIN
NO SCALE

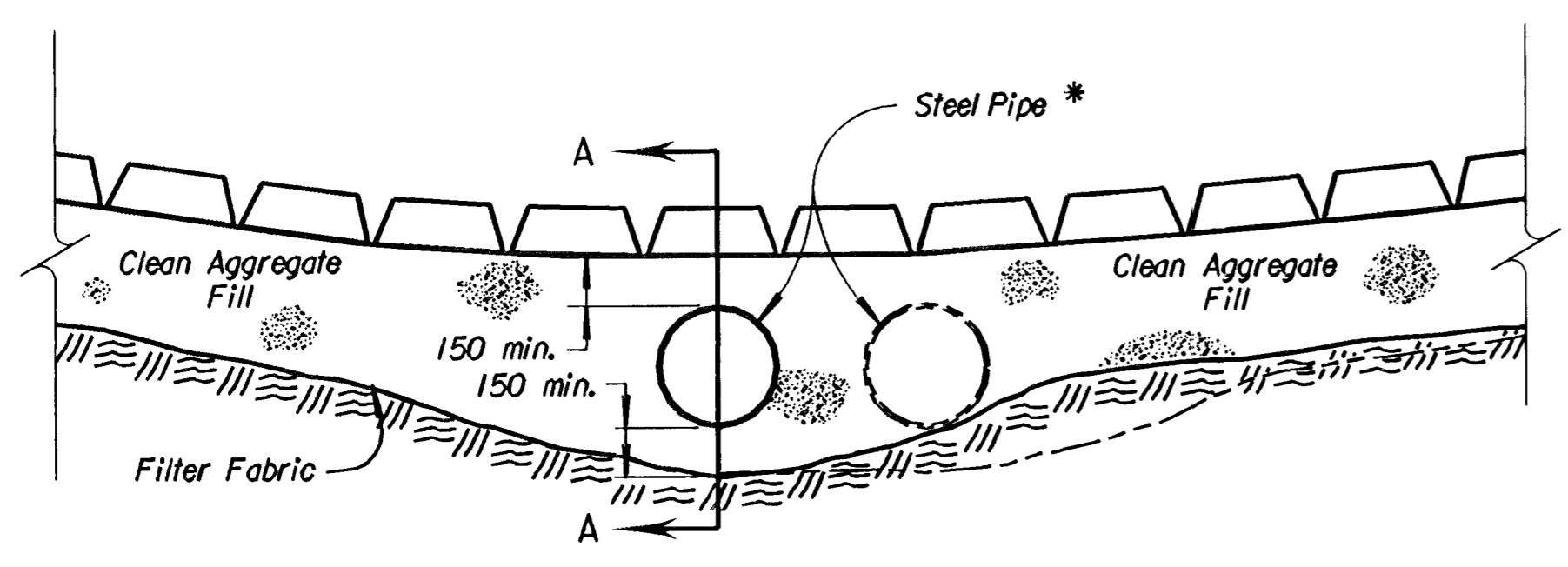


TYPICAL PROFILE OF TEMPORARY SLOPE DRAIN
NO SCALE

TYPICAL PROFILE OF TEMPORARY BERM
NO SCALE



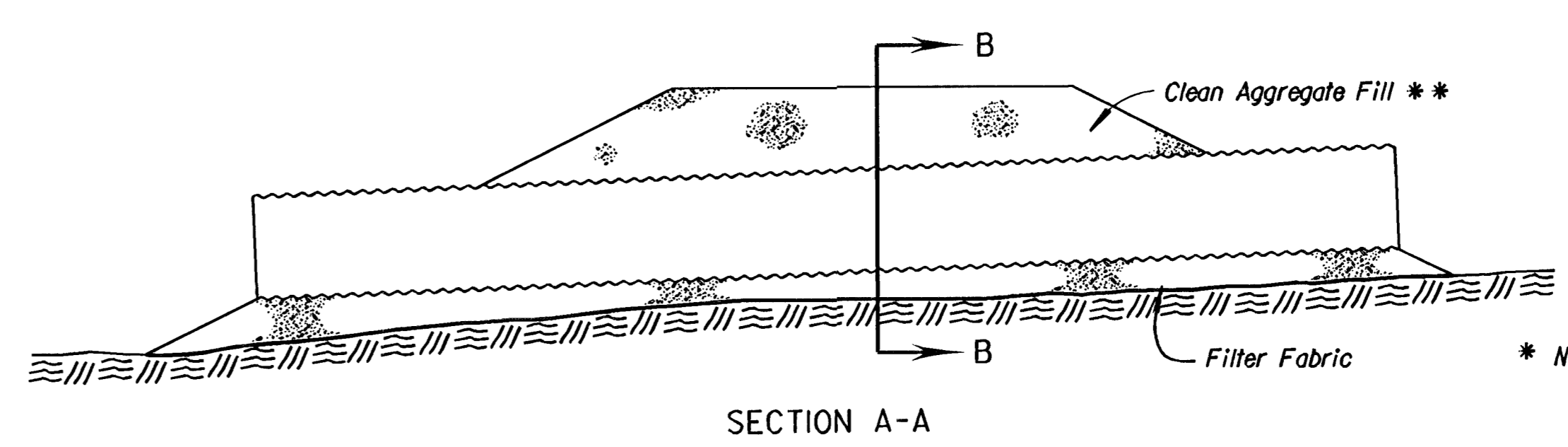
SECTION A-A



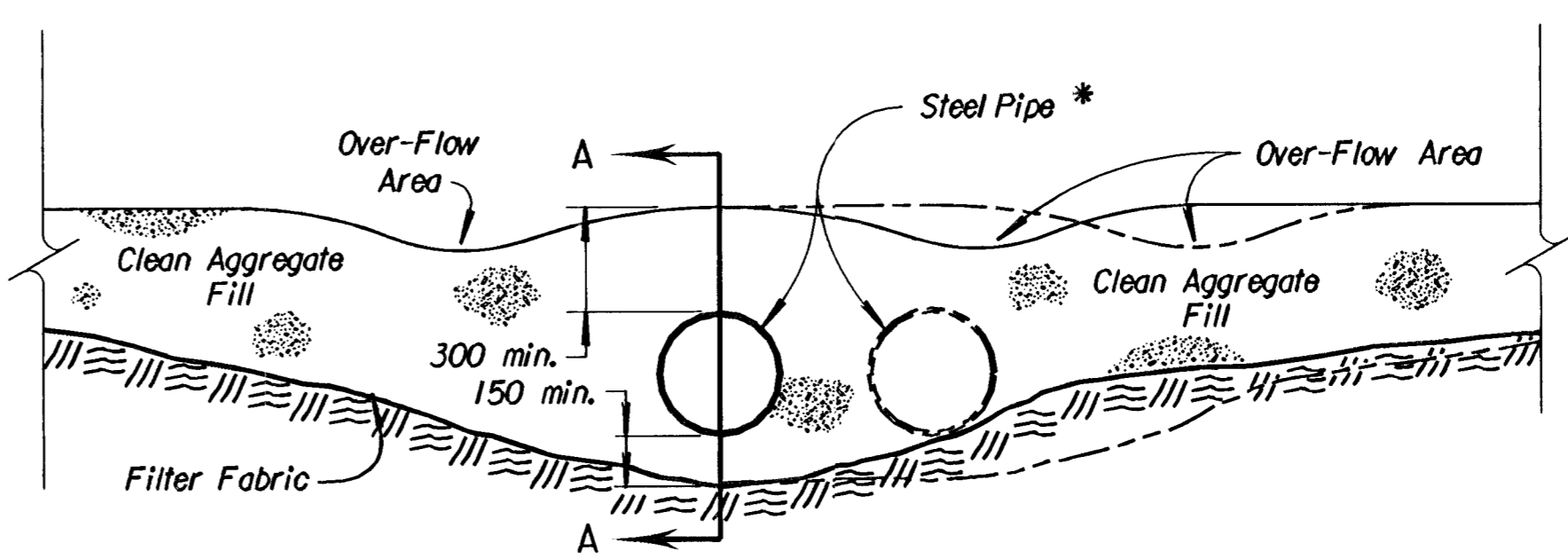
SECTION B-B

TEMPORARY STREAM CROSSING (ARTICULATED CONCRETE BLOCKS)
NO SCALE

* NOTE:
Quantity, length and diameter of steel pipe to be determined by design flow calculations.



SECTION A-A



SECTION B-B

TEMPORARY STREAM CROSSING (AGGREGATE)
NO SCALE

* NOTE:
Quantity, length and diameter of steel pipe to be determined by design flow calculations.

NO.	DATE	REVISIONS	BY	APP'D
3				
2				
1	5/10/99	Revised Standard	WCL	RDR

KANSAS DEPARTMENT OF TRANSPORTATION
TEMPORARY EROSION AND POLLUTION CONTROL
TEMPORARY SLOPE DRAIN
TEMPORARY STREAM CROSSING (AGGREGATE)
TEMP. STREAM CROSS. (ARTC. CONC. BLOCKS)
LA852B SI

DESIGNED	WCL	DETAILED	WCL	QUANTITIES	RDR
DESIGN CK.	RDR	DETAIL CK.	RDR	QUAN. CK.	RDR

APPROVAL: 5/20/99, APP'D: Richard D. Ross

Drawn By: KVE
 DGN File: 2232AKDOT.stds\LA852B.SI.DGN
 Plotted: 4-25-02
 View: PLOT 1