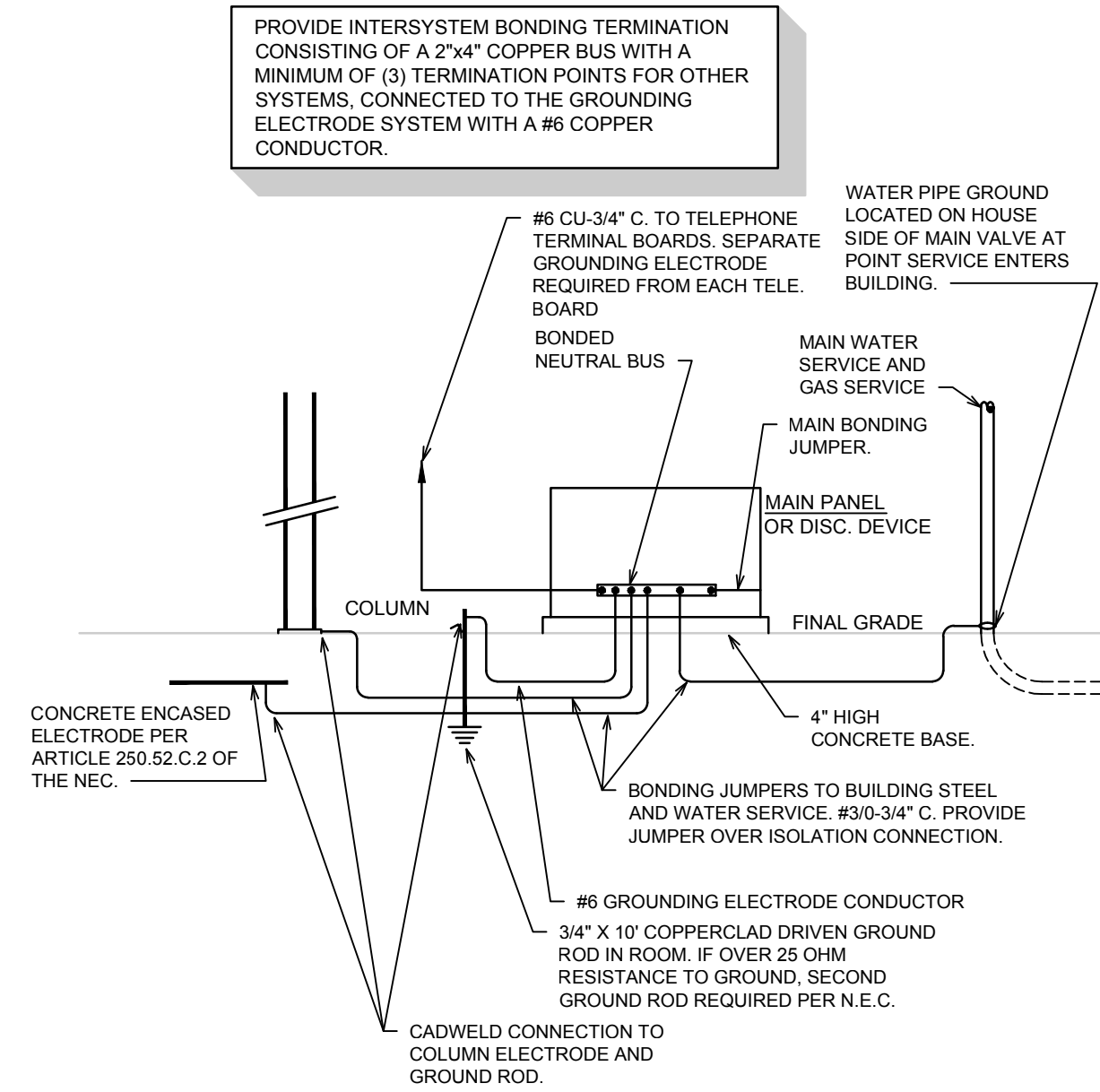


C RISER DIAGRAM
SCALE: N.T.S.

RISER NOTES:

- 1 PROVIDE 400A 120/208V 3 PHASE NEMA 3R SERVICE ENTRANCE RATED FUSIBLE DISCONNECT. REFER TO GROUNDING DETAIL D/E2 FOR ADDITIONAL INFORMATION ON GROUNDING.
- 2 NEW 400A UTILITY METER
- 3 CONTRACTOR TO INSTALL UNISTRUT FOR MOUNTING OF UTILITY METER AND DISCONNECT.



D SYSTEM GROUNDING DETAIL
SCALE: N.T.S.

Panel: A		Voltage: 208/120	A.I.C. Rating: 65000A Series Rated
Load Type: L=Lighting, R=Receptacle, M=Motors, HO=Hotel K=Kitchen, H=HVAC, MI=Misc		Phase: Three	Mains Rating: 225A
		Wires: 4W + G	Main Breaker Size: N/A
		Enclosure: Type 3R	Panel Size: Main Lug Only
		Sections: One	Mounting: Surface

Circ No.	Load Description	Trip	Poles	Load Type	A	B	C	Load Type	Poles	Trip	Load Description	Circ No.
1c	FOOD TRUCKS	50	2	R	4160			L	1	20	SPARE	2
3				R		4160		L	1	20	SPARE	4
5c	FOOD TRUCKS	50	2	R			4160	L	1	20	SPARE	6
7				R	4160			L	1	20	SPARE	8
9c	FOOD TRUCKS	50	2	R		4160		MI	1	20	SPARE	10
11				R			4160	MI	1	20	SPARE	12
13c	FOOD TRUCKS	50	2	R	4160			MI	1	20	SPARE	14
15				R		4160		MI	1	20	S.O.	16
17c	RECPTS	20	1	R			1500	MI	1	20	S.O.	18
19c	RECPTS	20	1	R	1500			MI	1	20	S.O.	20
21c	RECPTS	20	1	R		1500		MI	1	20	S.O.	22
23c	RECPTS	20	1	R			1500	MI	1	20	S.O.	24
25c	RECPTS	20	1	R	1500			MI	1	20	S.O.	26
27c	RECPTS	20	1	R		1500		MI	1	20	S.O.	28
29c	RECPTS	20	1	R			1500	MI	1	20	S.O.	30
31c	RECPTS	20	1	R	1500			MI	1	20	S.O.	32
33	LIGHTS	20	1	L		915		MI	1	20	S.O.	34
35	STAGE EQUIPMENT	100	3	MI			7000	MI	1	20	S.O.	36
37				MI	7000			MI	1	20	S.O.	38
39				MI		7000		MI	1	20	S.O.	40
41	SPARE			MI				MI	1	20	S.O.	42
a - Arc Fault Breaker					Total (KVA)	23.98	23.395	19.82				
b - Shunt Trip Breaker					Total Connected (KVA):	67.20						
c - GFCI Breaker					Total Connected (Amps):	186.52						

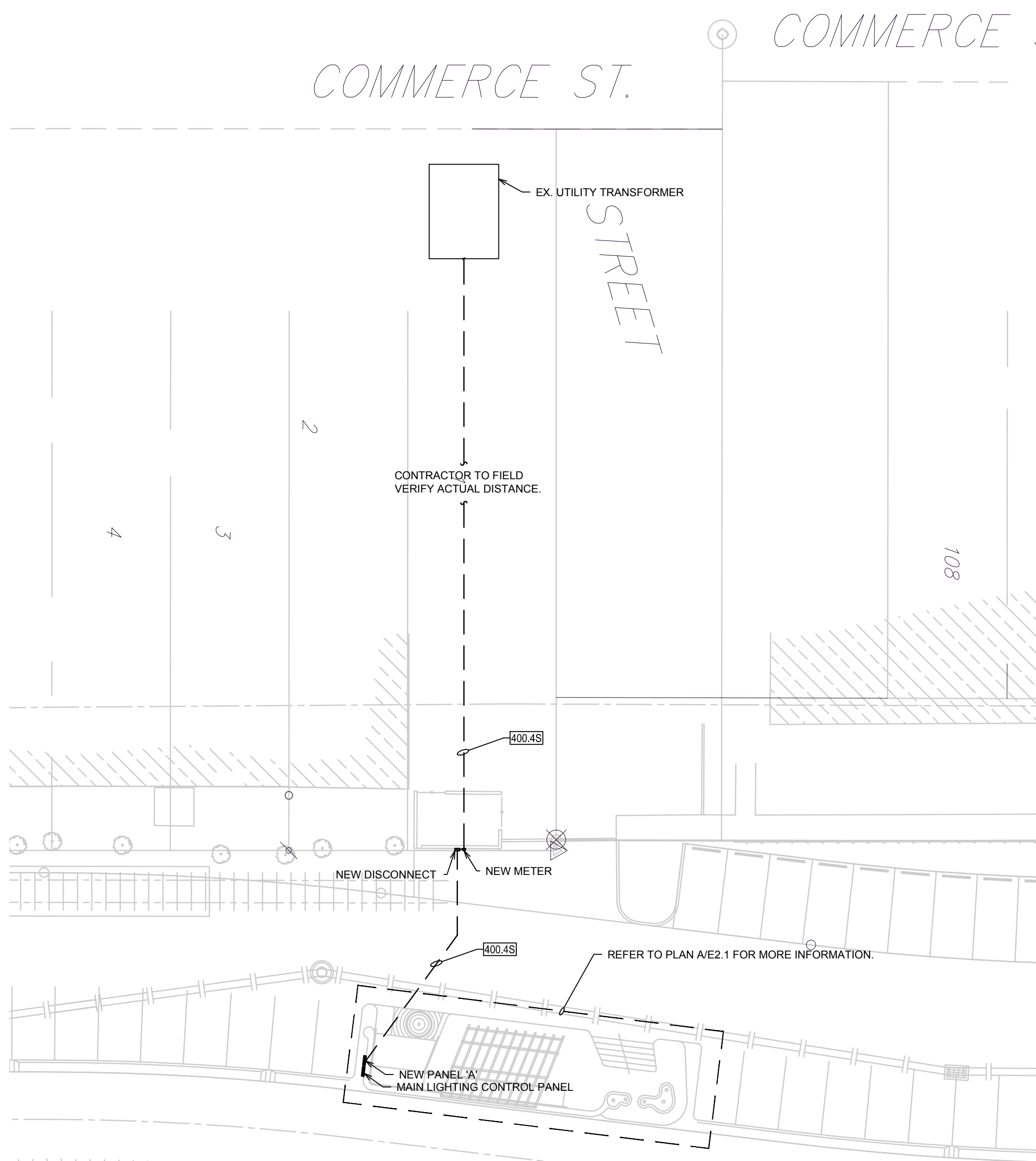
Notes:
a - Arc Fault Breaker
b - Shunt Trip Breaker
c - GFCI Breaker

Per NEC, Article 220 for Lighting and General Receptacle Loads

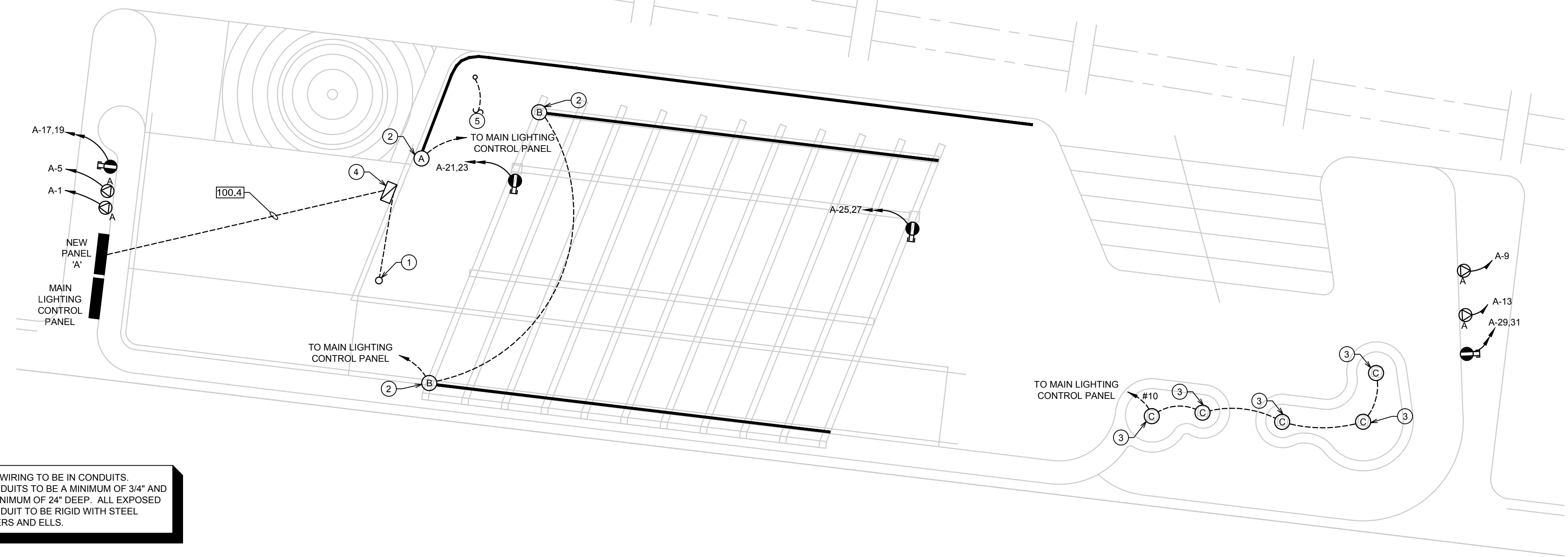
Load Classification	Connected Load (KVA)	Demand Factor	Demand (KVA)	Panel Totals
Lights	0.9	1.25 Continuous	1.1	Total Demand (KVA): 49.8
Receptacles	45.3	Per NEC 220	27.6	
Motors	0.0	Per NEC 220	0.0	Demand Amps: 138.2
Hotel	0.0	Per NEC 220	0.0	
Kitchen	0.0	Per NEC 220	0.0	
HVAC	0.0	Per NEC 220	0.0	
Misc	21.0	1.00	21.0	

GENERAL NOTES:

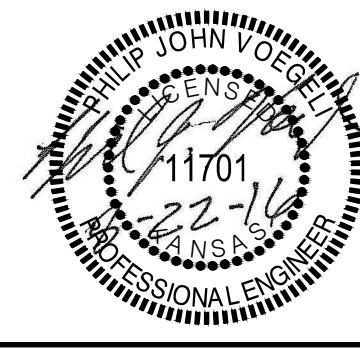
- 1 ALL CIRCUITS INDICATED ON DRAWINGS SHALL BE 20A, 120V CIRCUITS WITH (2)-#12'S AND (1)-#12 G. IN 0.5" CONDUIT U.O.N.
 - 2 LABEL ALL SNAP SWITCH COVERPLATES WITH THE PANEL AND CIRCUIT NUMBER.
 - 3 REFER TO RELATED ARCHITECTURAL DRAWINGS FOR RELATED INFORMATION.
 - 4 REFER TO THE SPECIFICATIONS FOR DATA NOT ON THE DRAWINGS.
 - 5 WALL MOUNTING HEIGHTS TO CENTERLINE OF DEVICE UNLESS OTHERWISE NOTED.
 - 6 A GROUND CONDUCTOR SIZED PER N.E.C. ARTICLE 250 IS REQUIRED IN ALL POWER, RECEPTACLE, AND LIGHTING CIRCUITS. GROUND CONDUCTORS ARE NOT SHOWN ON DRAWINGS.
- PLAN NOTES:**
- 1 2" CONDUIT STUB UP WITH CAP AND PULLSTRING FOR STAGE POWER. COORDINATE LOCATION WITH GENERAL CONTRACTOR PRIOR TO ROUGH-IN.
 - 2 ELECTRICAL CONTRACTOR TO PROVIDE LIGHTING ELEMENT VIA LIGHT FIXTURE TO ARTIST. ARTIST WILL FABRICATE AND INSTALL LIGHTING ELEMENT AT THIS LOCATION. ELECTRICAL CONTRACTOR TO PROVIDE FINAL CONNECTION TO LIGHT FIXTURE. DARK LINE REPRESENTS LENGTH OF FIXTURE REQUIRED IN EACH OF WHITE, RED, BLUE, GREEN AND AMBER COLORS. COORDINATE INSTALLATION LOCATION AND REQUIREMENTS WITH GENERAL CONTRACTOR AND ARTIST.
 - 3 ELECTRICAL CONTRACTOR TO PROVIDE AND INSTALL 12FT LIGHTING ELEMENT. VIA LIGHT FIXTURE. 6" ON EACH SIDE OF TOP OF RAIL. COORDINATE INSTALLATION LOCATION AND REQUIREMENTS WITH GENERAL CONTRACTOR AND ARTIST. ELECTRICAL CONTRACTOR TO PROVIDE ALL MOUNTING AND CONNECTIONS OF LIGHT FIXTURE. ROUTE CONDUIT UP INTERIOR SPACE OF RAIL GRASS TO LIGHT FIXTURE.
 - 4 PROVIDE 100A 120/240V 3 PHASE NEMA 3R FUSIBLE DISCONNECT. FUSED AT 100A.
 - 5 PROVIDE (1) 1" EMPTY CONDUIT WITH PULL STRING ROUTED BACK TO MAIN CONTROL PANEL FOR FUTURE ELEMENT. CONDUIT TO STUBBED UP AND CAPPED. COORDINATE LOCATION WITH GENERAL CONTRACTOR AND ARTIST PRIOR TO ROUGH-IN.



B ELECTRICAL OVERALL PLAN
SCALE: 1" = 20'-0"
NORTH



A FLOOR PLAN - POWER & LIGHTING
SCALE: 1/4" = 1'-0"
NORTH



Integrated Consulting Engineers, Inc.
349 South Hydraulic • Wichita, KS 67211
316.264.3588 • 316.264.3948 • www.icengr.com

Drawing File: M:\2016\16223.00-015 - Rail Yard Stage\Electrical Files\16223.00-E1.sdwg
Project No. 1410-e149 CAPITAL IMPROVEMENT PROJECT
Design: PV
Drawn: CK
Approved: PV
Scale: NOTED

COMMERCE PARKING LOT SITE PLAN
COMMERCE ART DISTRICT

Baughman Company, P.A.
315 Ellis St. Wichita, KS 67211 P 316-262-7271 F 316-262-0149
ENGINEERING | SURVEYING | PLANNING | LANDSCAPE ARCHITECTURE

FEBRUARY, 2016
SHEET E2 OF