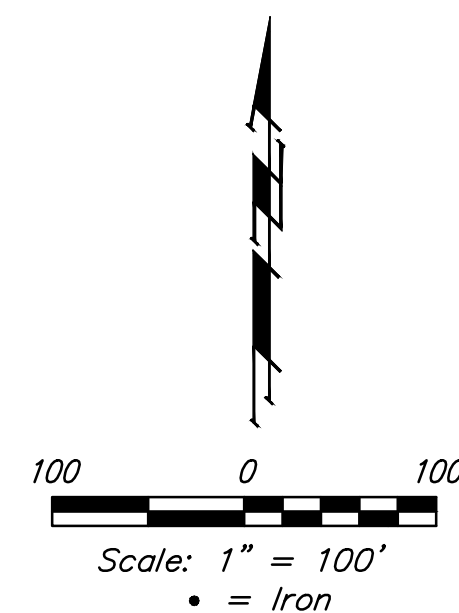
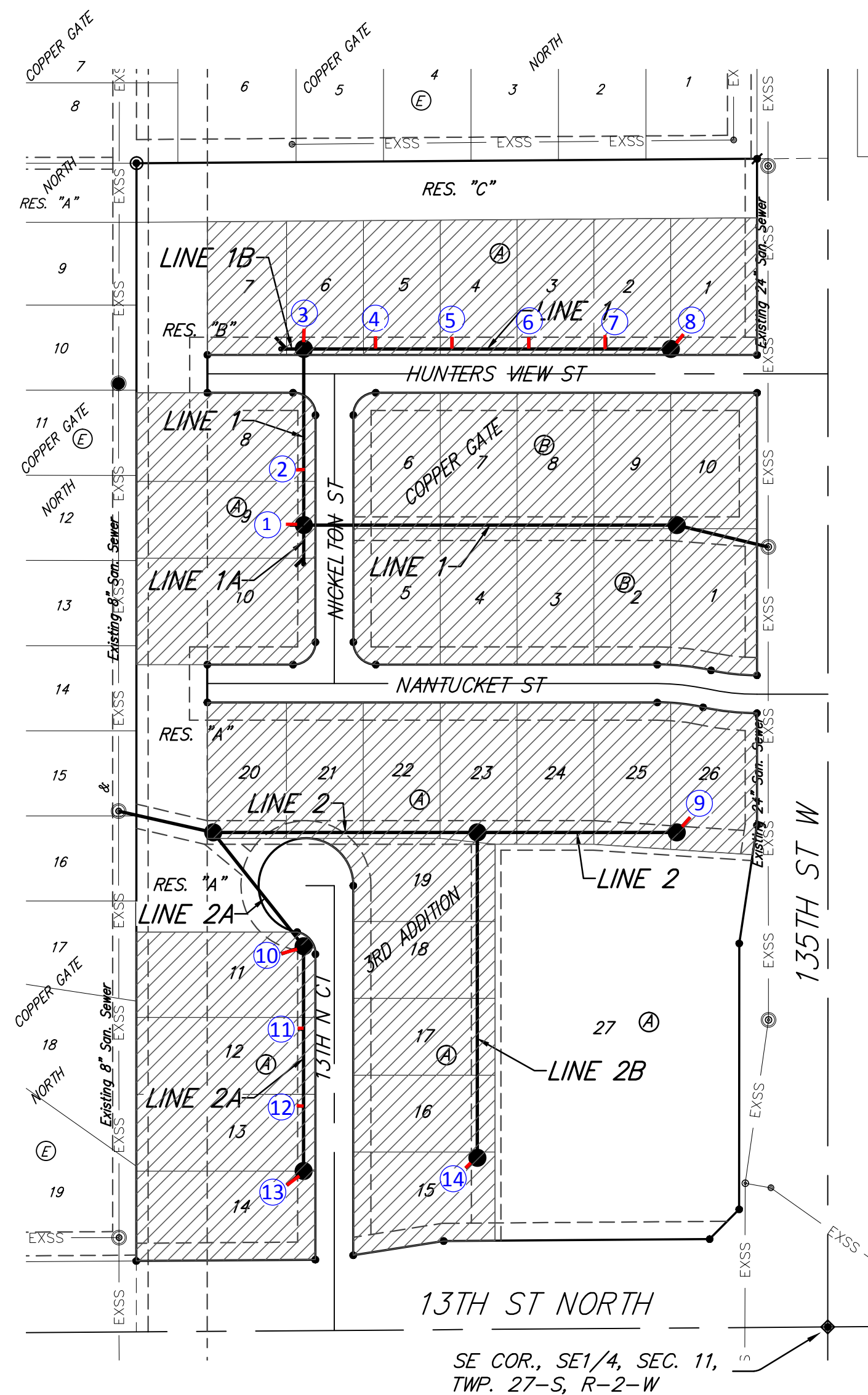
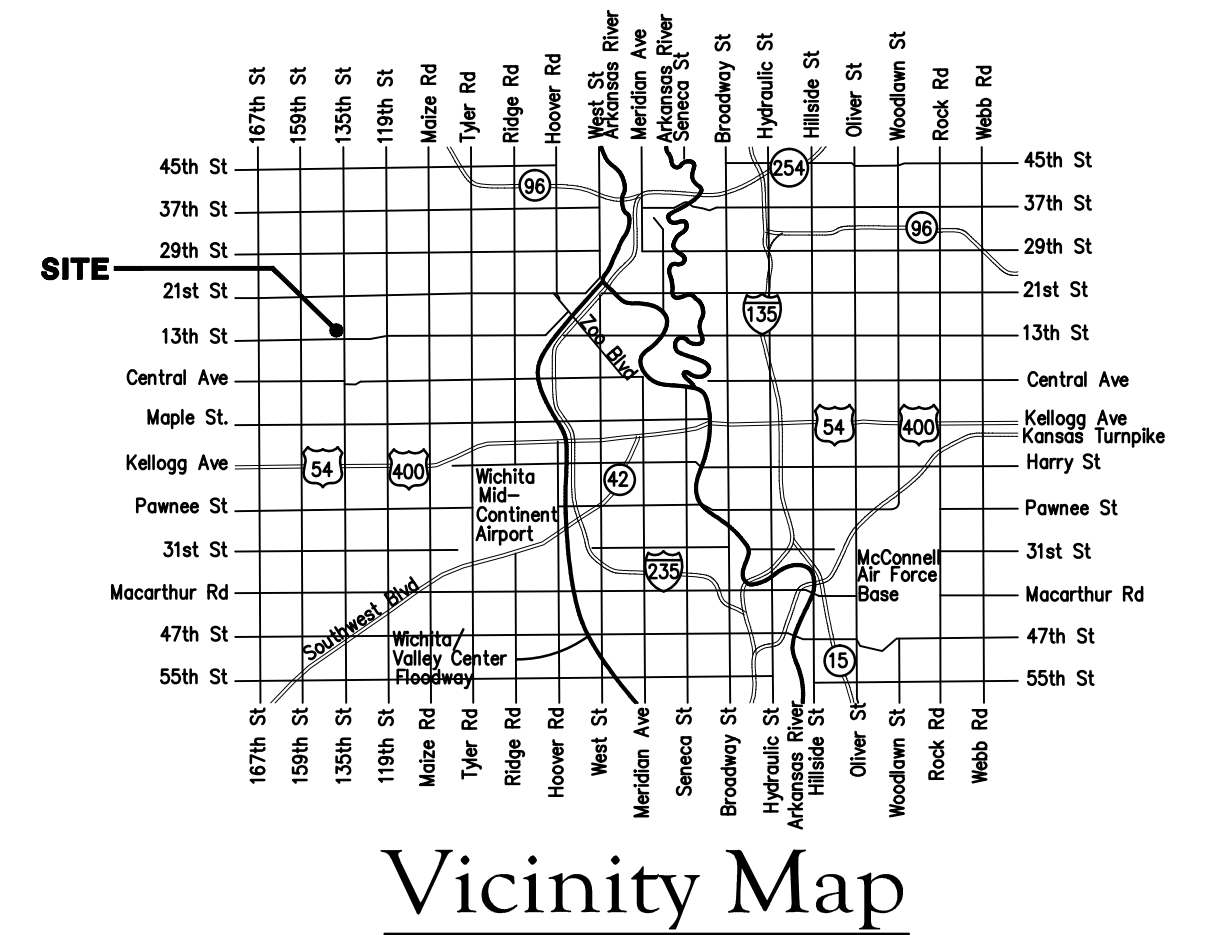


Lateral 21 Northwest Interceptor SANITARY SEWER IMPROVEMENTS to serve **COPPER GATE 3RD ADDITION** CITY OF WICHITA, KANSAS

Gary Janzen, P.E. City Engineer
Project Number
468-85093
OCA Number
744409

Nowak Construction - Contractor
J. Brand - City of Wichita, Field Project Engineer
T. Dvorak - City of Wichita
Stubs & Risers
As-built
Release Date: 09/19/2016
pdf: apr 10/13/2016



BENCHMARK

"X" cut top of the NE corner of drop inlet. 82.5'± north & 30.5'± west of the SE Cor., SE1/4, Sec. 11. TWP. 27-S, R-2-W. Elev. = 1353.75 (NAVD88)

SHEET INDEX

Title Sheet	1
Line 1, Line 1A, & Line 1B	2
Line 2	3
Line 2A	4
Line 2B	5
Erosion Control Plan	6
Erosion Control BMP Details	7-11
Standard Manhole Detail	12
Ring & Cover Detail	13
Vertical Riser Detail	14
Coordinate Sheet	15
Copy of Plat	16

GENERAL NOTES:

- Contractor will be required to provide notice to utility companies a minimum of forty-eight (48) hours prior to any excavation, as follows:

Kansas One-Call 687-2470

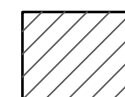
The Contractor must notify the following in case of an emergency:

Cox Communications 262-4270
Kansas Gas Service 1-888-482-4950
Westar Energy 383-8650
Aquila Energy 1-800-303-0357
AT&T 268-2245
City of Wichita Water Dept. 268-4563
City of Wichita Sewer Maint. 268-4024
City of Wichita Storm Sewer Maint. 268-4090
City of Wichita Traffic Maint. 268-4034
Conoco Phillips Pipeline Co. 1-877-267-2290
Southern Star Pipeline Co. 529-6600
Kinder-Morgan Pipeline Co. 1-888-844-5658
- Utility service lines, poles, valve boxes, meters, and etcetera are to be adjusted as necessary by others prior to construction unless the plans specifically call for their adjustment by the Contractor or unless the plans specifically identify a utility to be adjusted by its owner during construction. Existing utilities and their location, as shown on the plans, represent the best information obtainable for design. The Contractor will be required to work around existing utilities within the right-of-way which do not conflict with proposed construction.
- Rubble from the removal of miscellaneous structures and excess excavation which is to be wasted shall be disposed of on sites to be provided by the Contractor. These sites shall be approved by the Engineer as to suitability, appearance and site location. Locations, in the opinion of the Engineer, that will leave an unsightly appearance will not be approved. All disposal sites must be approved by the Kansas Department of Health and Environment. Material either stockpiled or disposed of in a flood plain would require a Kansas State Board of Agriculture permit. Any material dumped in waters of the United States or wetlands is subject to U.S. Corps. of Engineers permitting regulations. Any material buried or stockpiled beyond approved construction limits would require additional archaeological investigations unless buried in a previously approved borrow location.
- Trees and shrubs in public right-of-way which are in direct conflict with proposed new construction shall be removed by the Contractor with the Engineer's approval. Trees and shrubs which are not in direct conflict with proposed new construction shall be saved and protected from damage.
- The Contractor shall give all property owners and/or tenants of developed property abutting the construction of this project a minimum of ten (10) days notice prior to start of construction.
- The Contractor shall be responsible for preserving property irons. The Contractor will be required to re-establish any property irons which are damaged or destroyed by his construction operations. Such irons shall be re-established by a licensed land surveyor in accordance with state laws.
- All existing and proposed erosion control measures including silt fencing, erosion control mat, straw bales, inlet barriers, and const. entrance shall be maintained throughout construction by the contractor and until project is accepted by the City of Wichita. The on-site engineer shall complete weekly reports on the status of erosion control measures. The contractor shall be required to comply with maintenance and/or replacement of erosion control measures as determined by the on-site engineer until project is accepted by the City of Wichita. Maintenance and/or replacement of erosion control measures to be paid by L.S. bid item "Maintain Existing BMP's."
- All excess excavation shall remain on-site and shall be stockpiled or spread at a location determined by the engineer.
- The Contractor shall be responsible for maintaining continuous flow of sewage through construction. Contractor's proposed method for maintaining sewage flow shall be approved by the Engineer. Cost of maintaining flow of sewage through construction will not be paid for directly and this cost shall be considered as subsidiary to the other pay items of work.
- All areas disturbed during construction shall be seeded as follows (Temporary Seeding):

Seed: Rye grass (PLS)--5 lbs./1000 Sq. Ft.

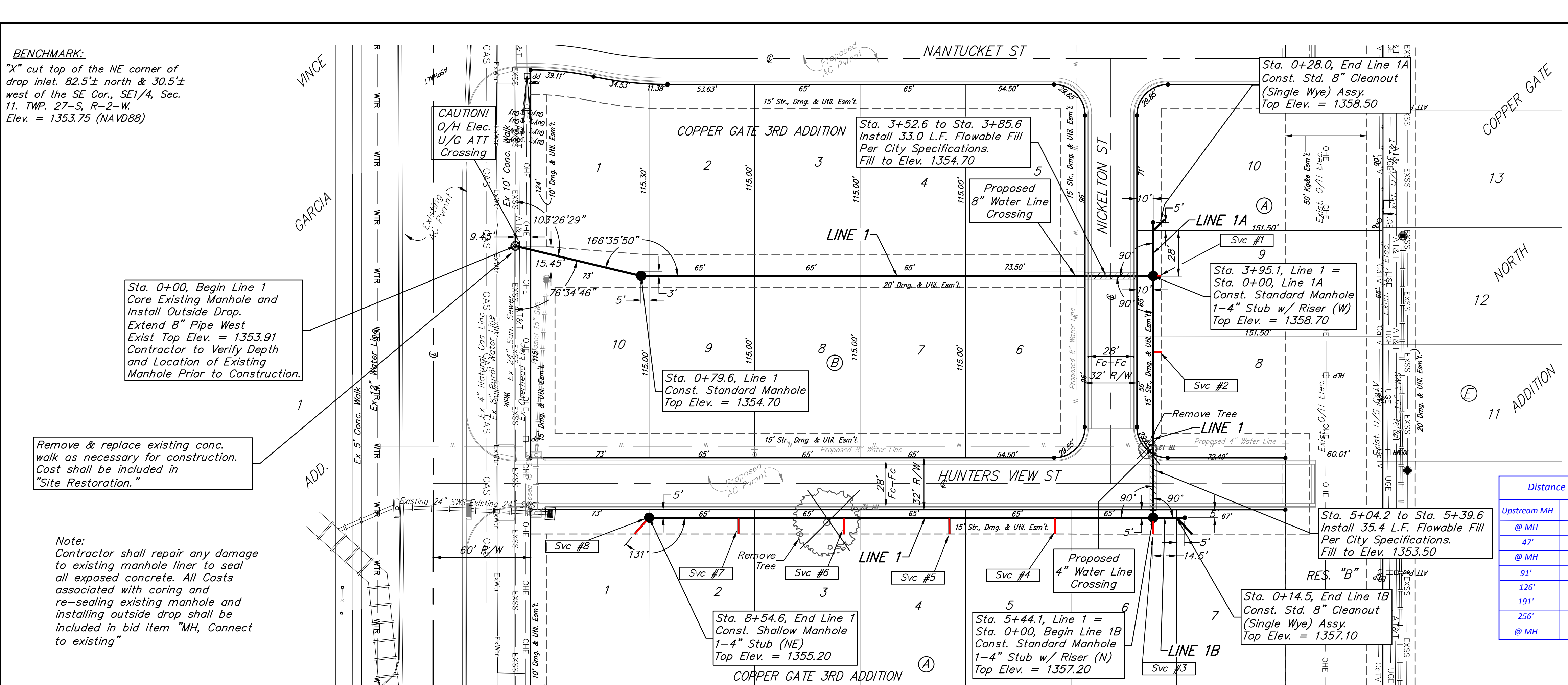
All costs associated with seeding shall be included in bid item "Seeding". All seeding operations shall conform to City of Wichita Standard Specifications.
- The Developer for this project is Paul Kelsey
PH# (316)722-1077

BENEFIT DISTRICT



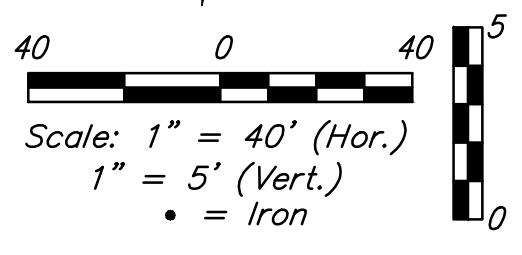
Baughman Company, P.A. 315 Ellis St. Wichita, KS 67211 P 316-262-7271 F 316-262-0149
ENGINEERING | SURVEYING | PLANNING | LANDSCAPE ARCHITECTURE

BENCHMARK:
 "X" cut top of the NE corner of drop inlet. 82.5'± north & 30.5'± west of the SE Cor., SE1/4, Sec. 11, TWP. 27-S, R-2-W. Elev. = 1353.75 (NAVD88)



The Contractor shall be required to backfill trench with sand from Sta. 3+95.1 to Sta. 5+04.2 and from Sta. 5+44.1 to Sta. 8+54.6, Line 1
 Sta. 0+00 to Sta. 0+28.0, Line 1A
 Sta. 0+00 to Sta. 0+14.5, Line 1B
 To be bid as "L.F. Sand Backfill Jetted and Vibrated"

⊗ = Existing Tree to be removed by the Contractor



Sta. 0+00, Begin Line 1 Core Existing Manhole and Install Outside Drop. Extend 8" Pipe West. Exist Top Elev. = 1353.91 Contractor to Verify Depth and Location of Existing Manhole Prior to Construction.

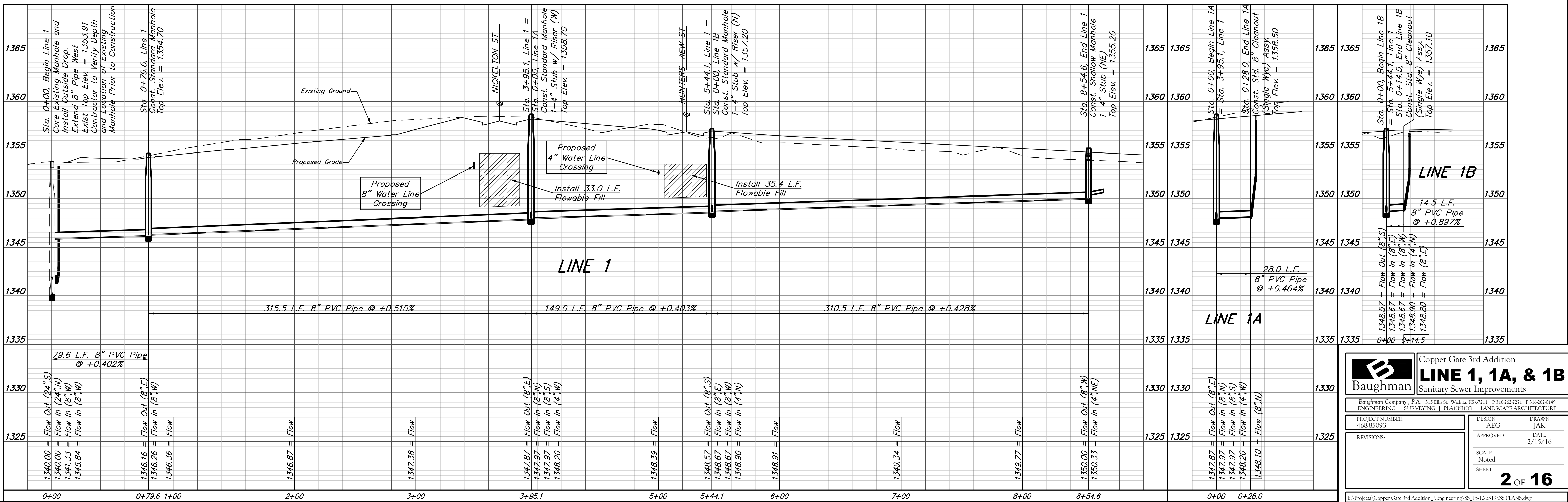
Remove & replace existing conc. walk as necessary for construction. Cost shall be included in "Site Restoration."

Note: Contractor shall repair any damage to existing manhole liner to seal all exposed concrete. All Costs associated with coring and re-sealing existing manhole and installing outside drop shall be included in bid item "MH, Connect to existing"

SEWER SERVICE TABLE

Upstream MH	Downstream MH	NUMBER	TYPE	LOCATION			FOR INFORMATION ONLY		
				LOT NO.	BLOCK NO.	LINE NO.	STATION/DIRECTION	APPROXIMATE LENGTH 4" PIPE VERTICAL	HORIZONTAL
@ MH	---	1	4" Stub	9	A	1	3+95.1/Lt	5.5'	5'
47'	102'	2	8" X 4" Tee	8	A	1	4+42/Lt	4.7'	5'
@ MH	---	3	4" Stub	6	A	1	5+44.1/Lt	3.7'	10'
91'	249.6'	4	8" X 4" Tee	5	A	1	6+05/Lt	2.8'	10'
126'	184.6'	5	8" X 4" Tee	4	A	1	6+70/Lt	2.1'	10'
191'	119.6'	6	8" X 4" Tee	3	A	1	7+35/Lt	1.4'	5'
256'	54.6'	7	8" X 4" Tee	2	A	1	8+00/Lt	1'	5'
@ MH	---	8	4" Stub	1	A	1	8+54.6/Lt	-	10'

NOTE: If vertical riser pipe length is greater than zero, the vertical portion of the riser shall be extended to 2' minimum above ground water elevation and 4' maximum below proposed ground elevation.



Baughman Copper Gate 3rd Addition
LINE 1, 1A, & 1B
 Sanitary Sewer Improvements

Baughman Company, P.A. 315 Ellis St. Wichita, KS 67211 P 316-262-7271 F 316-262-0149
 ENGINEERING | SURVEYING | PLANNING | LANDSCAPE ARCHITECTURE

PROJECT NUMBER: 468-85093
 DESIGN: AEG
 DRAWN: JAK
 APPROVED: [Signature]
 DATE: 2/15/16

REVISIONS:

SCALE: Noted
 SHEET: 2 OF 16

BENCHMARK:
 "X" cut top of the NE corner of drop inlet. 82.5'± north & 30.5'± west of the SE Cor., SE1/4, Sec. 11, TWP. 27-S, R-2-W. Elev. = 1353.75 (NAVD88)

Lots 15 & 16, Block E, Copper Gate Addition shall be sodded to match existing turf type. Damage to sprinklers/irrigation shall be replaced and/or repaired as necessary for construction. Cost to be included in "Site Restoration"

CAUTION!
 U/G Elec., CatV & AT&T Crossing

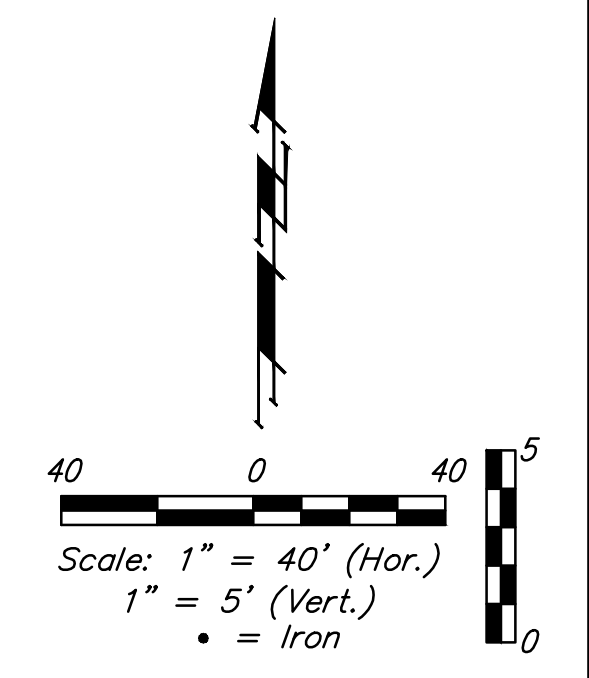
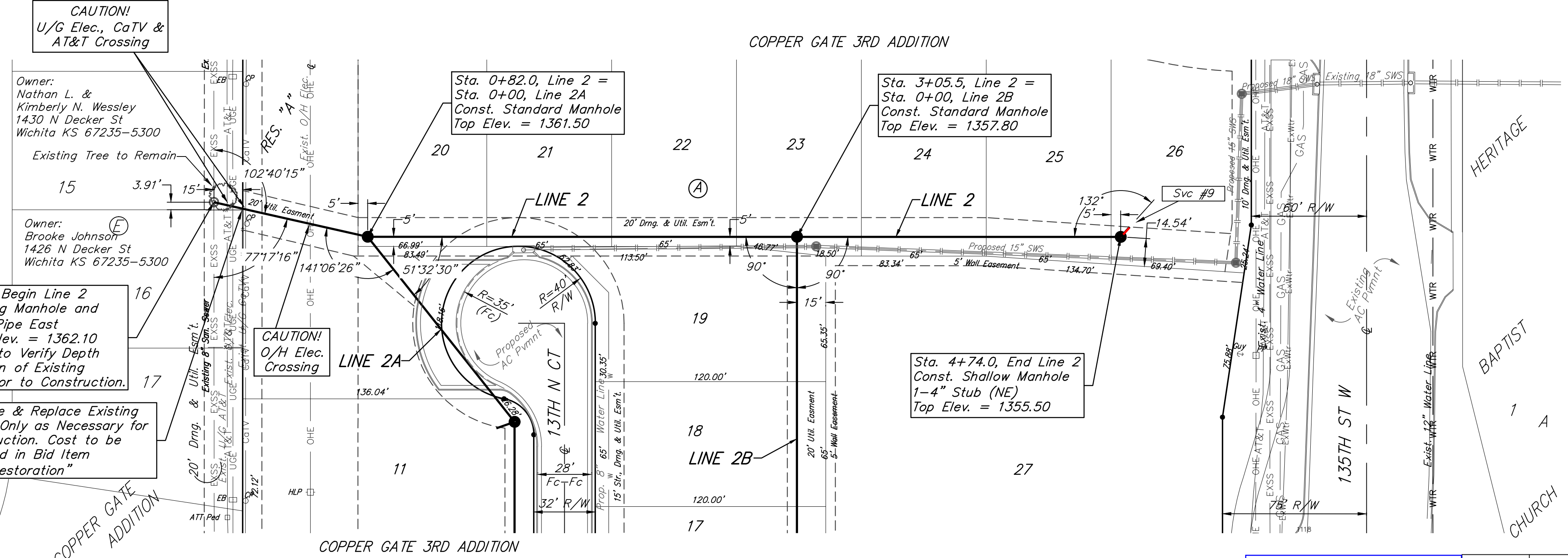
Owner:
 Nathan L. & Kimberly N. Wesley
 1430 N Decker St
 Wichita KS 67235-5300

Owner:
 Brooke Johnson
 1426 N Decker St
 Wichita KS 67235-5300

Sta. 0+00, Begin Line 2 Core Existing Manhole and Extend 8" Pipe East Exist Top Elev. = 1362.10 Contractor to Verify Depth and Location of Existing Manhole Prior to Construction.

Remove & Replace Existing Fence Only as Necessary for Construction. Cost to be Included in Bid Item "Site Restoration"

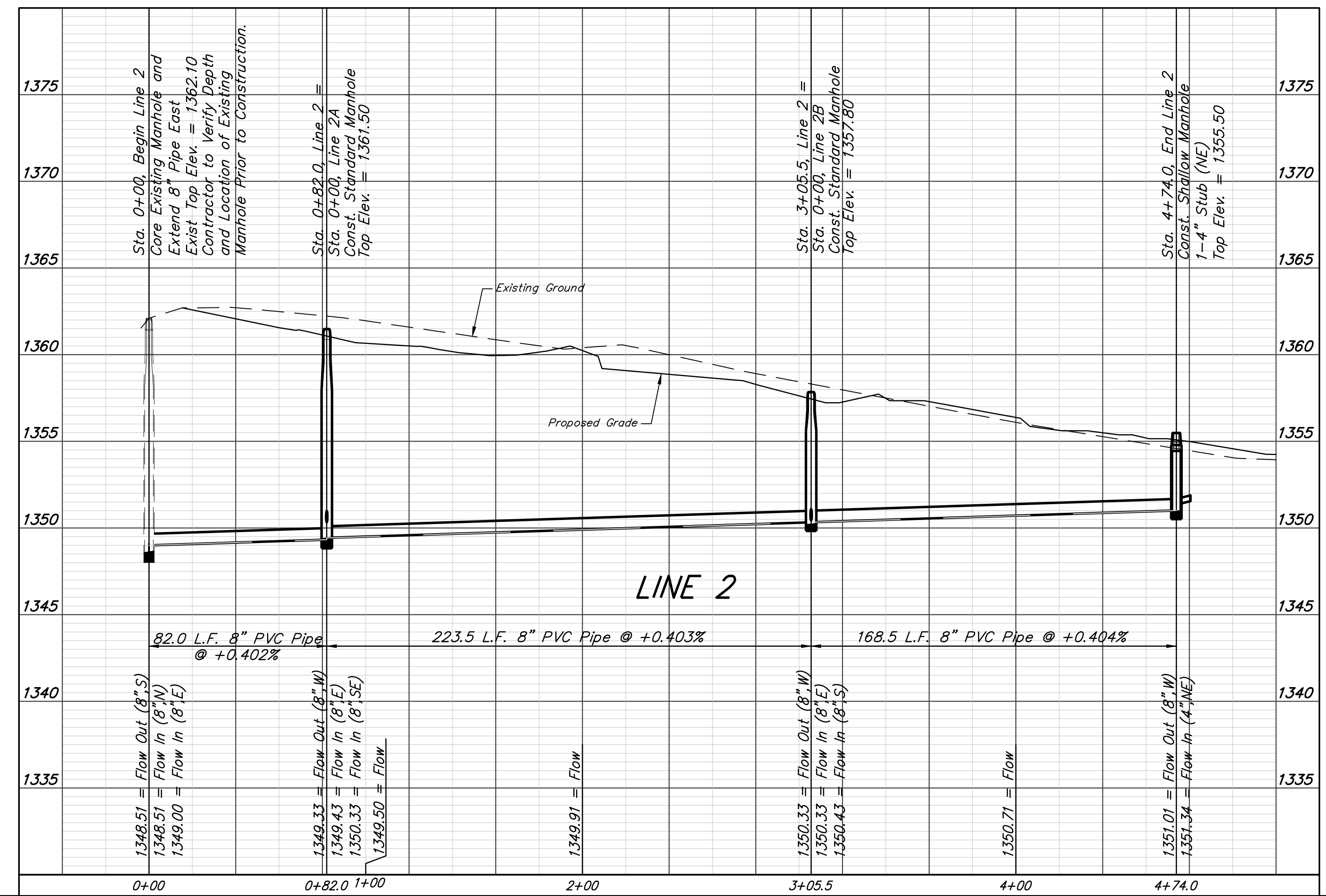
Note:
 All Costs associated with coring existing manhole shall be included in bid item "MH, Connect to existing"



SEWER SERVICE TABLE

Distance From	Upstream MH	Downstream MH	NUMBER	TYPE	LOCATION				FOR INFORMATION ONLY	
					LOT NO.	BLOCK NO.	LINE NO.	STATION/DIRECTION	APPROXIMATE LENGTH 4" PIPE	
@ MH									VERTICAL	HORIZONTAL
			9	4" Stub	26	A	2	4+74.0/Lt	-	5'

NOTE: If vertical riser pipe length is greater than zero, the vertical portion of the riser shall be extended to 2' minimum above ground water elevation and 4' maximum below proposed ground elevation.



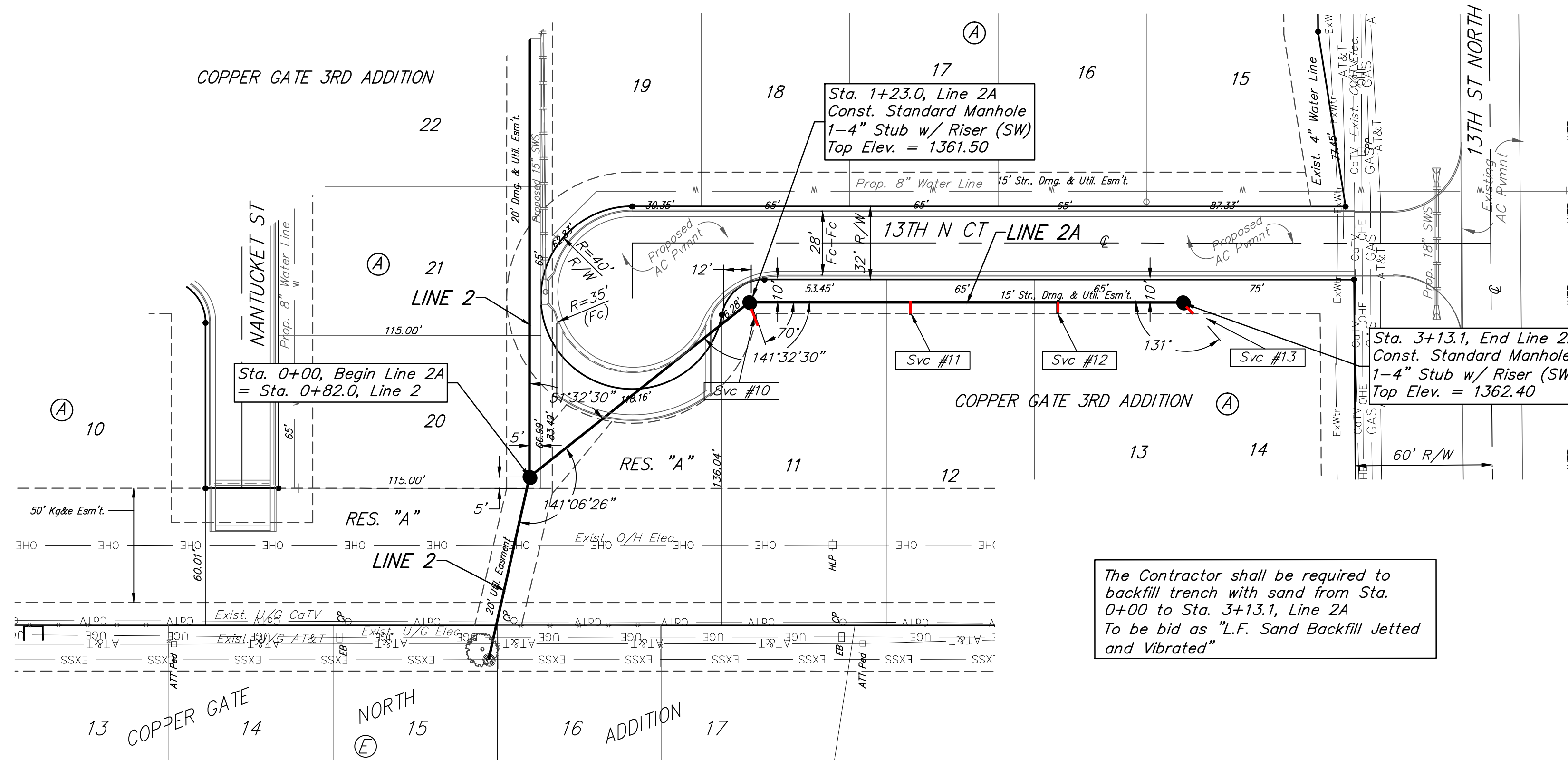
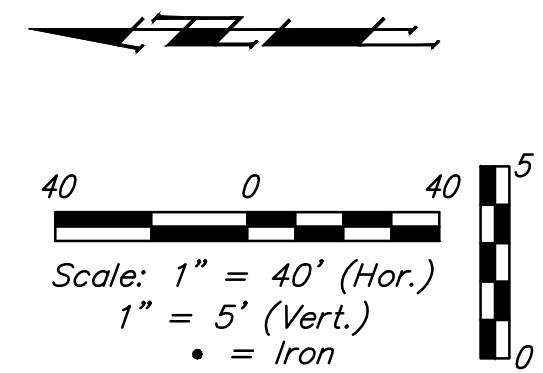
Baughman Engineering, P.A. 315 Ellis St. Wichita, KS 67211 P 316-262-2149 F 316-262-0149
 ENGINEERING | SURVEYING | PLANNING | LANDSCAPE ARCHITECTURE

Copper Gate 3rd Addition
LINE 2
 Sanitary Sewer Improvements

PROJECT NUMBER 468-85093	DESIGN AEG	DRAWN JAK
REVISIONS:	APPROVED	DATE 2/15/16
	SCALE Noted	SHEET 3 OF 16

E:\Projects\Copper Gate 3rd Addition_3_Engineering\SS_15-10-E319\SS PLANS.dwg

BENCHMARK:
 "X" cut top of the NE corner of drop inlet. 82.5'± north & 30.5'± west of the SE Cor., SE1/4, Sec. 11, TWP. 27-S, R-2-W. Elev. = 1353.75 (NAVD88)

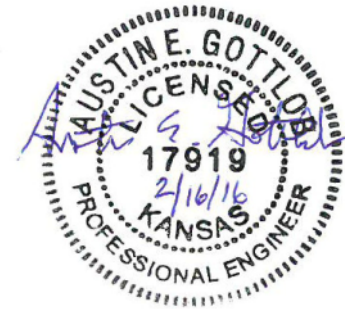
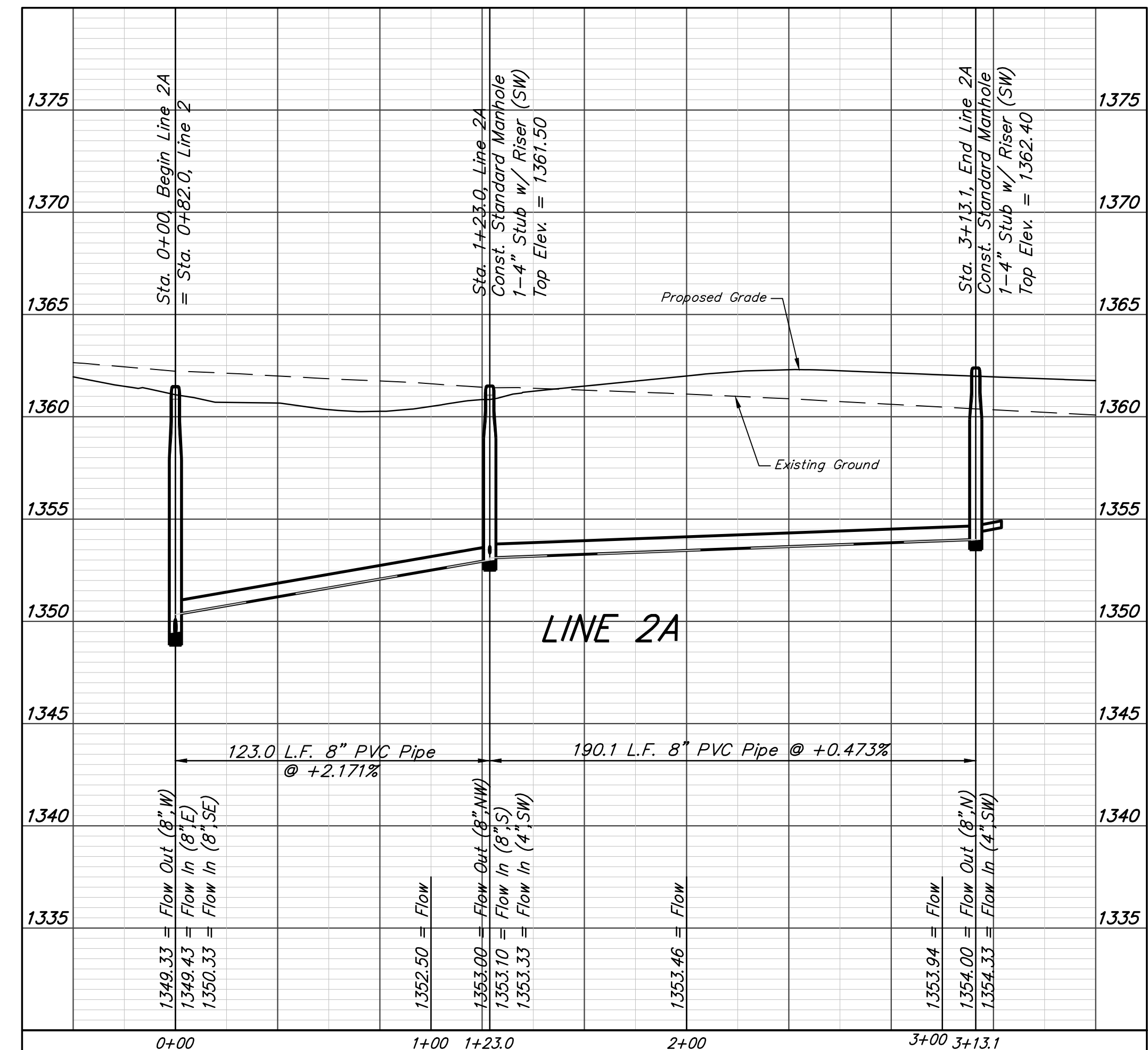


SEWER SERVICE TABLE

Distance From	Upstream MH	Downstream MH	NUMBER	TYPE	LOCATION			FOR INFORMATION ONLY		
					LOT NO.	BLOCK NO.	LINE NO.	STATION/DIRECTION	APPROXIMATE LENGTH 4" PIPE	VERTICAL
@ MH	—	—	10	4" Stub	11	A	2A	1+26/Rt	3'	10'
70'	120'	—	11	8" X 4" Tee	12	A	2A	1+93/Rt	3.7'	5'
135'	55'	—	12	8" X 4" Tee	13	A	2A	2+58/Rt	3.7'	5'
@ MH	—	—	13	4" Stub	14	A	2A	3+13.1/Rt	3'	10'

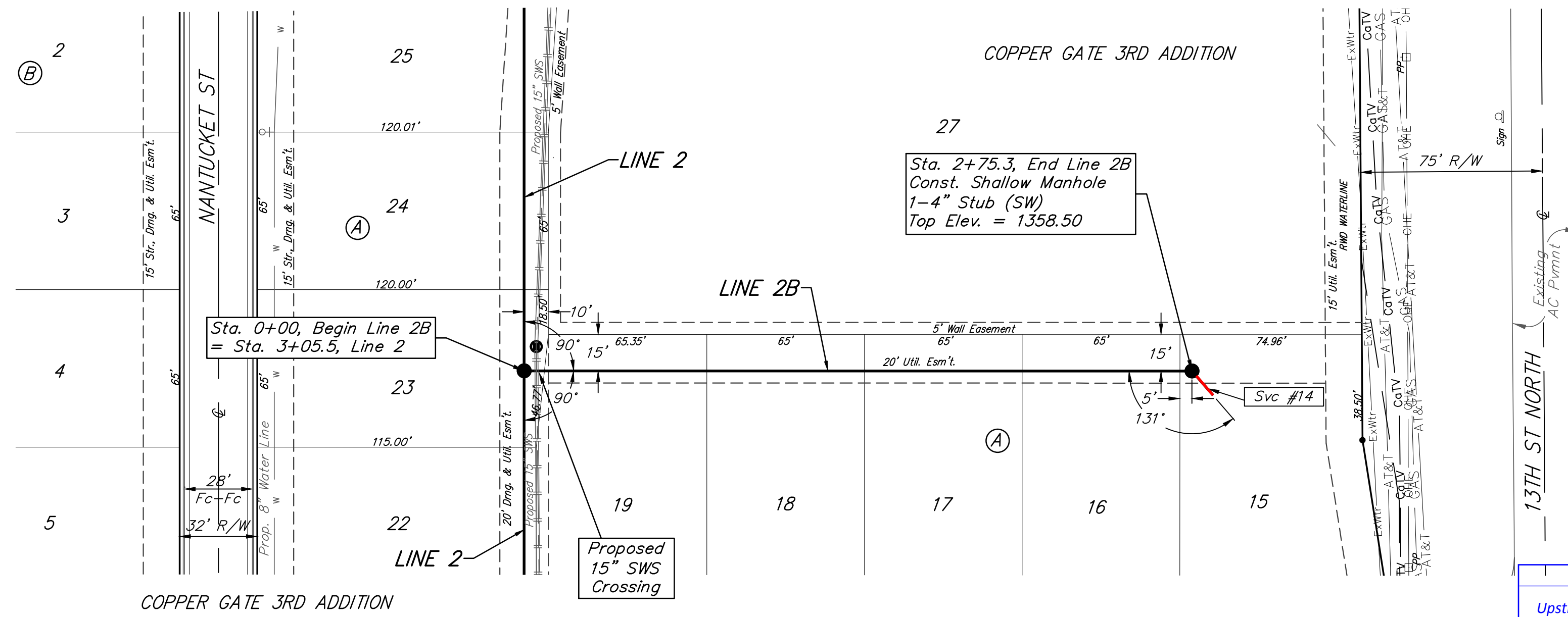
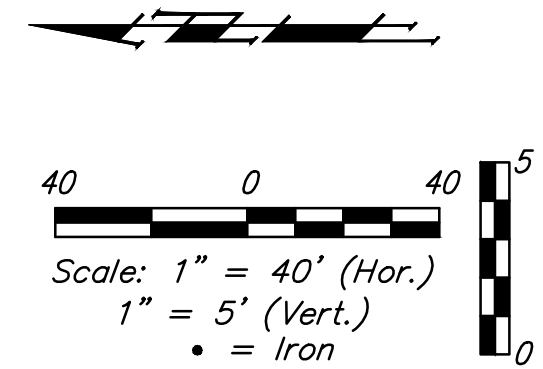
NOTE: If vertical riser pipe length is greater than zero, the vertical portion of the riser shall be extended to 2' minimum above ground water elevation and 4' maximum below proposed ground elevation.

The Contractor shall be required to backfill trench with sand from Sta. 0+00 to Sta. 3+13.1, Line 2A. To be bid as "L.F. Sand Backfill Jetted and Vibrated"



Baughman		Copper Gate 3rd Addition LINE 2A Sanitary Sewer Improvements	
Baughman Company, P.A. 315 Ellis St. Wichita, KS 67211 P 316-262-7271 F 316-262-0149 ENGINEERING SURVEYING PLANNING LANDSCAPE ARCHITECTURE			
PROJECT NUMBER 468-85093	DESIGN AEG	DRAWN JAK	DATE 2/15/16
REVISIONS:	APPROVED	SCALE Noted	SHEET
		4 OF 16	

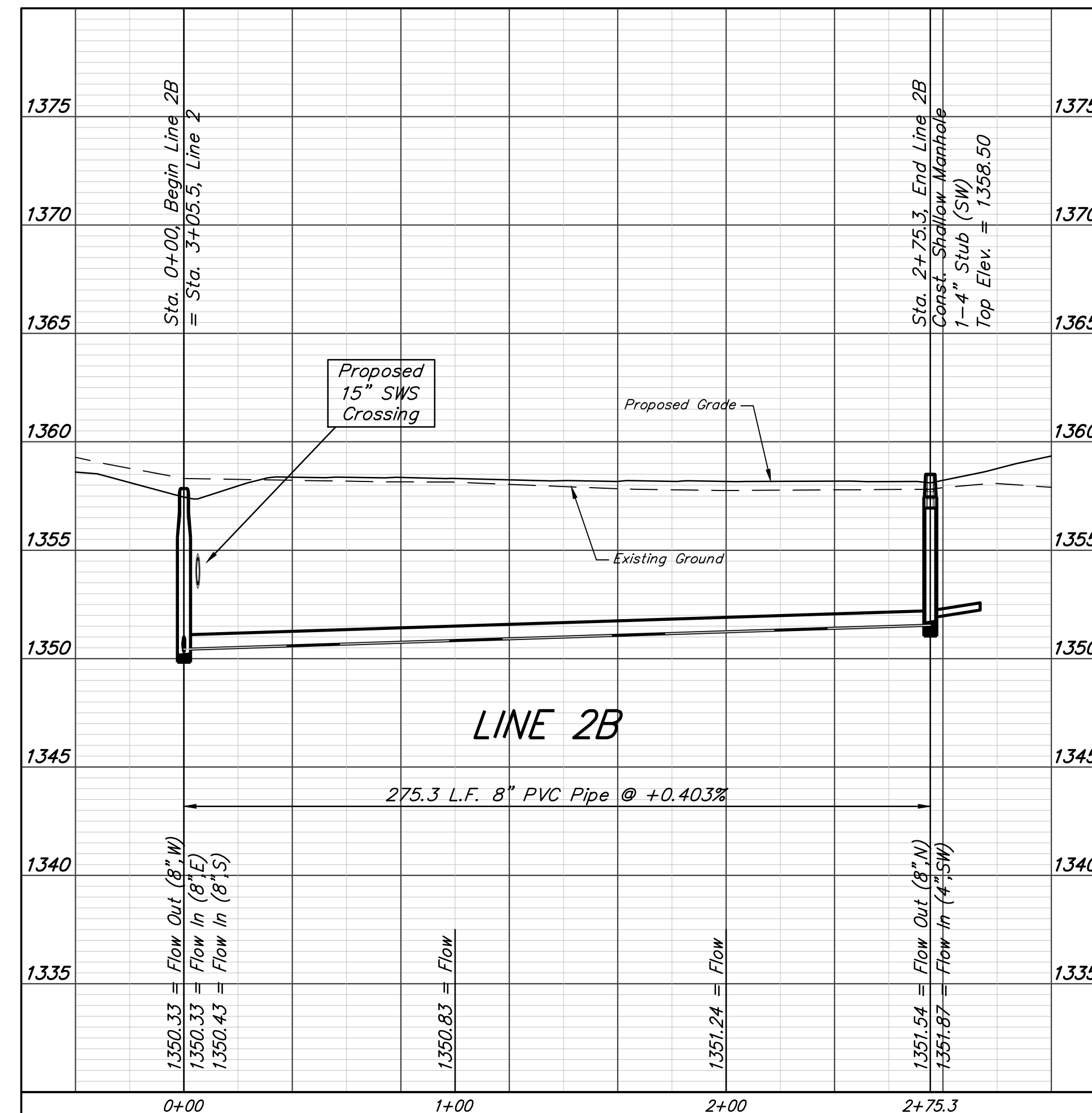
BENCHMARK:
 "X" cut top of the NE corner of drop inlet. 82.5'± north & 30.5'± west of the SE Cor., SE1/4, Sec. 11, TWP. 27-S, R-2-W. Elev. = 1353.75 (NAVD88)



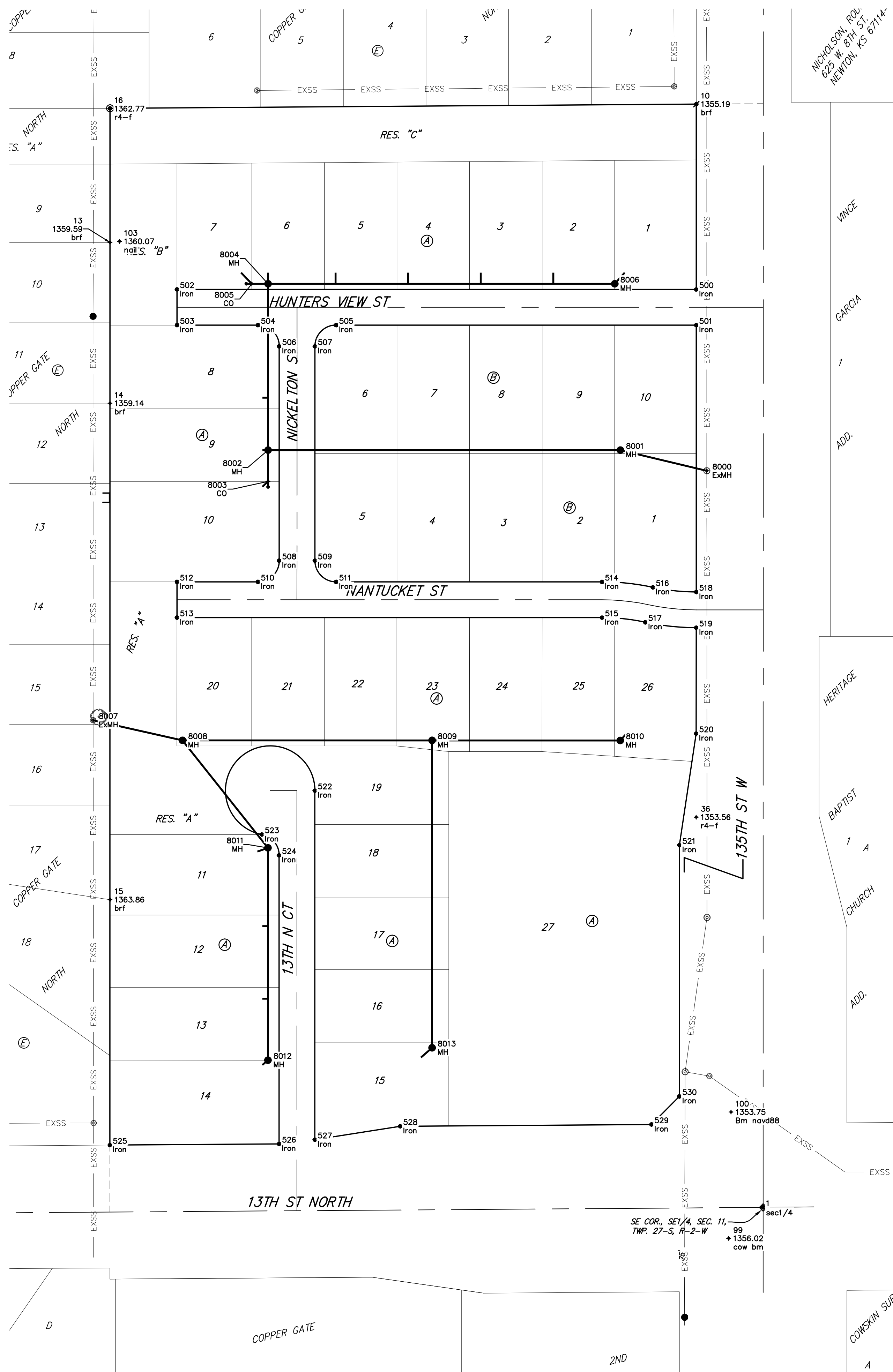
SEWER SERVICE TABLE

Distance From		NUMBER	TYPE	LOCATION			FOR INFORMATION ONLY		
Upstream MH @ MH	Downstream MH			LOT NO.	BLOCK NO.	LINE NO.	STATION/DIRECTION	APPROXIMATE LENGTH 4" PIPE	HORIZONTAL
		14	4" Stub	15	A	2B	2+75.3/Rt	-	5'

NOTE: If vertical riser pipe length is greater than zero, the vertical portion of the riser shall be extended to 2' minimum above ground water elevation and 4' maximum below proposed ground elevation.



		Copper Gate 3rd Addition	
		LINE 2B	
Sanitary Sewer Improvements		Baughman Company, P.A. 315 Ellis St. Wichita, KS 67211 P 316-262-7271 F 316-262-0149 ENGINEERING SURVEYING PLANNING LANDSCAPE ARCHITECTURE	
PROJECT NUMBER 468-85093	DESIGN AEG	DRAWN JAK	APPROVED DATE 2/15/16
REVISIONS:	SCALE Noted SHEET		
			5 OF 16



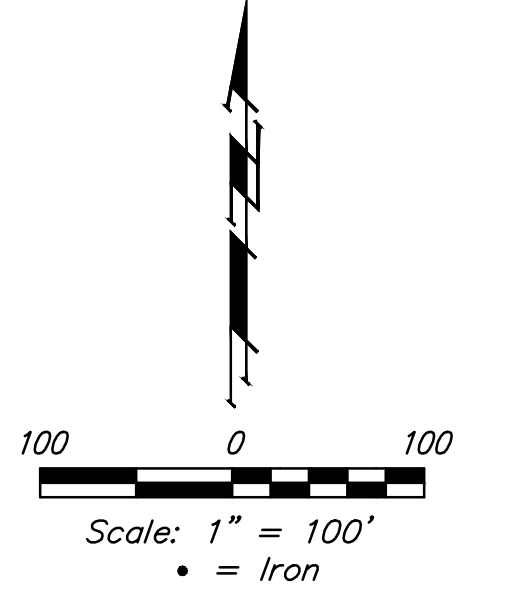
Control Points

Point #	Northing	Easting	Description
1	22632.89	10000.00	sec1/4
10	23621.21	9940.27	brf
13	23497.26	9415.17	brf
14	23353.23	9415.14	brf
15	22908.57	9415.10	brf
16	23617.14	9415.04	r4-f
36	22982.43	9940.05	r4-f
99	22605.16	9969.13	cow bm
100	22718.32	9971.18	Bm navd88
103	23498.21	9423.68	naill
500	23455.16	9940.12	Iron
501	23423.16	9940.12	Iron
502	23455.22	9475.13	Iron
503	23423.22	9475.13	Iron
504	23423.21	9547.61	Iron
505	23423.20	9617.61	Iron
506	23404.21	9566.61	Iron
507	23404.21	9598.61	Iron
508	23212.21	9566.58	Iron
509	23212.21	9598.58	Iron
510	23193.21	9547.58	Iron
511	23193.20	9617.58	Iron
512	23193.22	9475.10	Iron
513	23161.22	9475.09	Iron
514	23193.17	9855.71	Iron
515	23161.17	9855.70	Iron
516	23188.30	9901.27	Iron
517	23157.02	9894.51	Iron
518	23184.16	9940.08	Iron
519	23152.16	9940.08	Iron
520	23057.35	9940.06	Iron
521	22957.36	9925.05	Iron
522	23006.21	9598.55	Iron
523	22966.91	9551.09	Iron
524	22948.24	9566.55	Iron
525	22688.71	9415.01	Iron
526	22689.79	9566.51	Iron
527	22693.53	9598.51	Iron
528	22705.57	9675.02	Iron
529	22707.18	9900.01	Iron
530	22732.36	9925.01	Iron

Sanitary Sewer Points

Point #	Northing	Easting	Description
8000	23292.70	9949.54	ExMH
8001	23311.17	9872.10	MH
8002	23311.21	9556.60	MH
8003	23283.21	9556.59	CO
8004	23460.21	9556.62	MH
8005	23460.21	9542.12	CO
8006	23460.17	9867.12	MH
8007	23069.20	9400.04	ExMH
8008	23051.22	9480.08	MH
8009	23051.19	9703.56	MH
8010	23051.17	9872.06	MH
8011	22954.91	9556.55	MH
8012	22764.79	9556.52	MH
8013	22775.84	9703.52	MH

BENCHMARK:
 "X" cut top of the NE corner of drop inlet. 82.5'± north & 30.5'± west of the SE Cor., SE1/4, Sec. 11, TWP. 27-S, R-2-W. Elev. = 1353.75 (NAVD88)



POINT DESC KEY:
 "brf" = Baughman rebar found
 "r4-f" = #4 rebar found

Baughman

Copper Gate 3rd Addition
COORDINATES
 Sanitary Sewer Improvements

Baughman Company, P.A. 315 Ellis St. Wichita, KS 67211 P 316-262-7271 F 316-262-0149
 ENGINEERING | SURVEYING | PLANNING | LANDSCAPE ARCHITECTURE

PROJECT NUMBER 468-85093	DESIGN AEG	DRAWN JAK
REVISIONS:	APPROVED	DATE 2/15/16
SCALE Noted		SHEET 15 OF 16

E:\Projects\Copper Gate 3rd Addition_3\Engineering\SS 15-10-E319\SS PLANS.dwg



COPPER GATE 3RD ADDITION WICHITA, SEDGWICK COUNTY, KANSAS

State of Kansas) SS We, **Baughman Company, P.A.**, Surveyors in Sedgwick County and state do hereby certify that we have surveyed and plotted "COPPER GATE 3RD ADDITION", Wichita, Sedgwick County, Kansas and that the accompanying plat is a true and correct exhibit of the property surveyed, described as being a replat of Lots 1, 2, 3 and 4, Block B, Copper Gate Addition, Sedgwick County, Kansas, EXCEPT the north 70.00 feet of said Lot 4.

Existing public easements, building setbacks, access controls, and dedications, if any, being vacated by virtue of K.S.A. 12-5-12b, as amended.

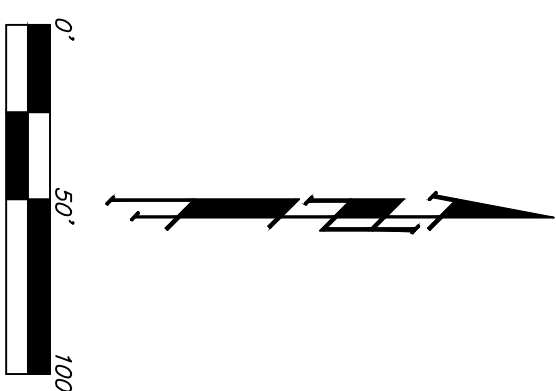
Baughman Company, P.A.

Michael G. Conroy

Surveyor

- = #4 REBAR W/ "BOLIGRAN" CAP (SET)
- = #4 REBAR W/ "BOLIGRAN" CAP (ROUND)
- = #4 REBAR W/ "SEDGWICK COUNTY" METAL CAP (ROUND)
- (M) = MEASURED
- (C) = CALCULATED
- (P) = CALCULATED PER MEASURED MTR
- (Q) = CALCULATED PER PLATTED MTR
- (S) = CALCULATED PER DESIGNED MTR

NOTE:
ADDITIONAL BUILDING SETBACKS PER
COMMUNITY UNIT PLAN DP-231



The undersigned holders of a mortgage on the above described property, do hereby consent to this plat of "COPPER GATE 3RD ADDITION", Wichita, Sedgwick County, Kansas.

Legacy Bank

State of Kansas) SS The foregoing instrument acknowledged before me, this _____ day of _____, by _____ of Legacy Bank on behalf of the bank.

My App't, Exp. _____, Notary Public

Know all men by these presents that we, the undersigned, have caused the land in the surveyor's certificate to be replatted into Lots, Blocks, Reserves, and Streets to be known as "COPPER GATE 3RD ADDITION", Wichita, Sedgwick County, Kansas. The utility easements are hereby granted as indicated for the construction and maintenance of all public utilities. The drainage and utility easements are hereby granted as indicated for drainage purposes and for the construction and maintenance of all public utilities. The street, drainage, and utility easements are hereby granted as indicated for the construction and maintenance of all public utilities. The well easements are hereby granted as indicated for the construction and maintenance of private screening wells and utility main lines and service lines shall be allowed to cross these easements. The parking easements are hereby granted as indicated exclusively for residential parking. The streets are hereby dedicated to and for the use of the public. Reserves "A" and "B" are reserved for open space, landscaping, drainage purposes, walking paths, sidewalks, streets as combined to easement, utilities as combined to easement, electric lines and related appurtenances as combined to easement, and residential parking as combined to easement. Reserve "C" is reserved for open space, landscaping, drainage purposes, utilities as combined to easement, an irrigation system and related appurtenances as combined to easement, and electric lines and related appurtenances as combined to easement. Reserves "A", "B", and "C" shall be owned and maintained by the homeowners association for the addition. Access controls shall be as depicted on the face of the plat and are hereby granted to the City of Wichita, Kansas. The access opening with the contingent right turn in only and right turn out only shall be a permitted full movement opening until such time as 13th Street North is improved to a four lane arterial pavement standard by the City of Wichita, Kansas, at which time the respective opening shall be converted to right turn in only and right turn out only.

Kelsey Investments, Inc., a Kansas corporation

Paul E. Kelsey, President

State of Kansas) SS The foregoing instrument acknowledged before me, this _____ day of _____, by Paul E. Kelsey, President of the Kelsey Investments, Inc., a Kansas corporation, on behalf of the corporation.

My App't, Exp. _____, Notary Public

This plat of "COPPER GATE 3RD ADDITION", Wichita, Sedgwick County, Kansas has been submitted to and approved by the Wichita-Sedgwick County Metropolitan Area Planning Commission, Wichita, Kansas.

Dated this _____ day of _____, 2005

Wichita-Sedgwick County Metropolitan Area Planning Commission

Carol Chapman Neugent, Chair

Dale Miller, Secretary

This plat approved and all dedications shown hereon accepted by the City Council of the City of Wichita, Kansas, this _____ day of _____, 2005.

Jeff Longwell, Mayor

Karen Sublett, City Clerk

Reviewed in accordance with K.S.A. 58-2005 on this _____ day of _____, 2005.

Tricia L. Robello, L.S. #1246
Deputy County Surveyor
Sedgwick County, Kansas

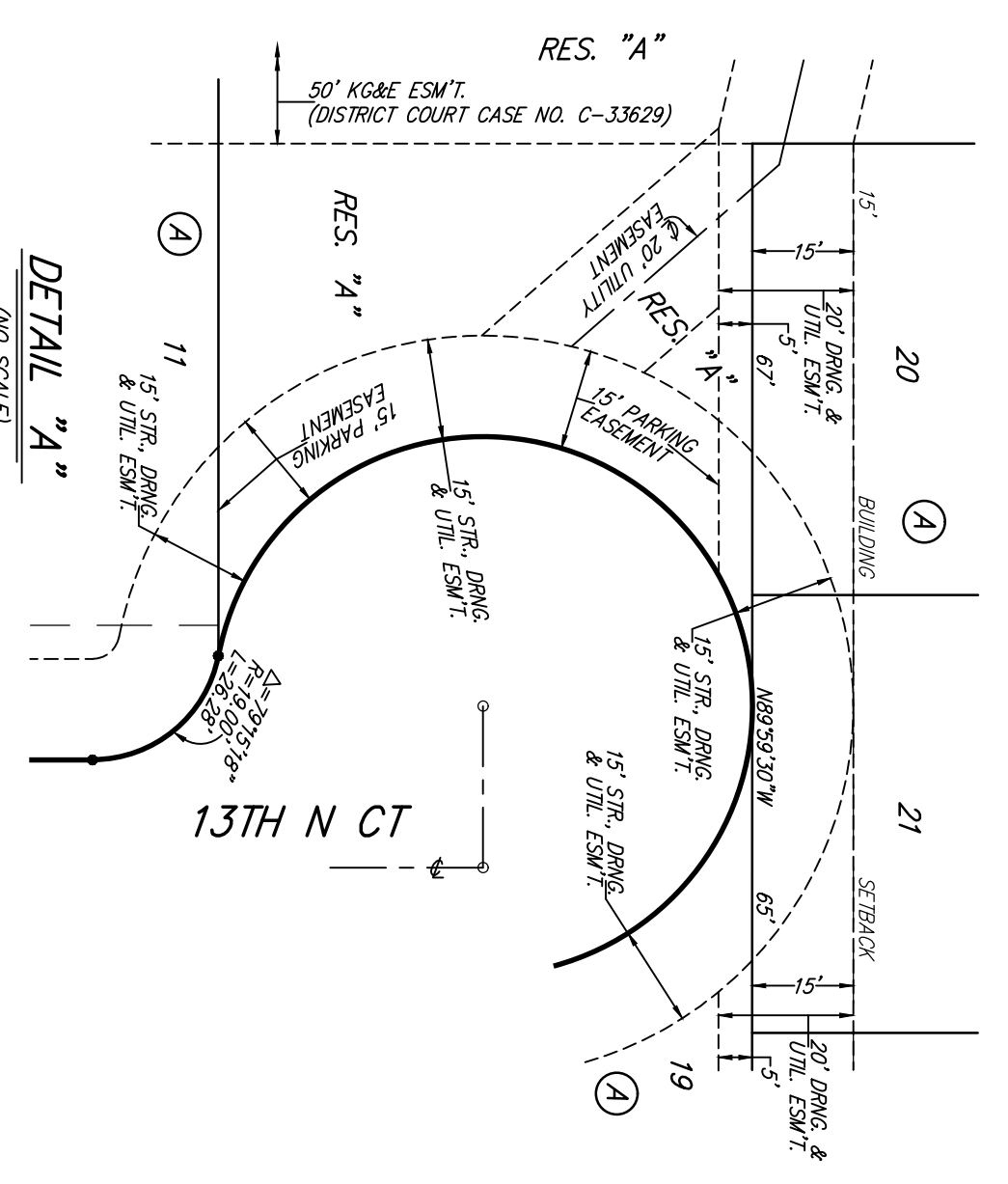
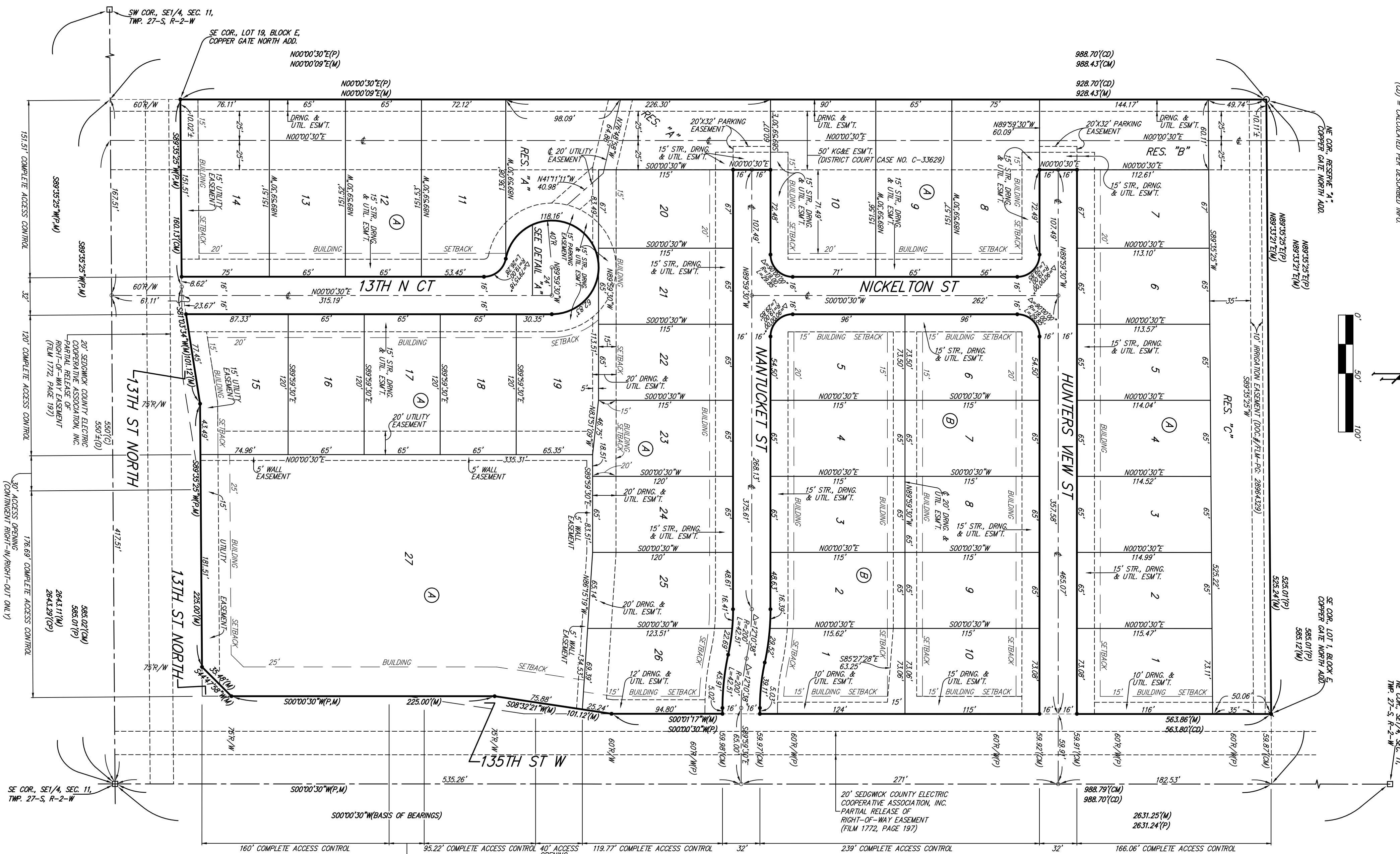
Entered on transfer record this _____ day of _____, 2005.

Kelly B. Arnold, County Clerk

State of Kansas) SS This is to certify that this plat has been filed for record in the office of the Register of Deeds, this _____ day of _____, 2005, at _____, Mo., and is duly recorded.

Bill Meek, Register of Deeds

Tony Buckingham, Deputy



NOTE:
A drainage plan has been developed for the plat and all drainage easements, rights-of-way, or reserves shall remain in existence unless a certificate of completion and undisturbed to allow for the convenience of stormwater.

Baughman Company, P.A.
113 HIBBS, WICHITA, KS 67211 P: 785.262.2711 F: 785.262.0119
www.baughman.com