

## GENERAL NOTES

1. THE CONTRACTOR SHALL COMPLY WITH ALL APPLICABLE SAFETY REGULATIONS. ALL CONSTRUCTION SHALL BE COMPLETED FOLLOWING CURRENT CITY STANDARD SPECIFICATIONS AND SPECIAL PROVISIONS.
2. CONTRACTOR WILL BE REQUIRED TO PROVIDE NOTICE TO UTILITY COMPANIES A MINIMUM OF SEVENTY-TWO (72) HOURS PRIOR TO ANY EXCAVATION, AS FOLLOWS:

KANSAS ONE-CALL 687-2470

THE CONTRACTOR MUST NOTIFY THE FOLLOWING IN CASE OF AN EMERGENCY:

AT&T	1-800-246-8464
BLACK HILLS ENERGY	1-800-694-8989
CITY OF WICHITA WATER	1-316-268-4555
CITY OF WICHITA SEWER	1-316-268-4073
CITY OF WICHITA STORMWATER	1-316-268-4090
CITY OF WICHITA TRAFFIC	1-316-268-4034
CDX COMMUNICATIONS	1-888-249-3530
KANSAS GAS SERVICE	1-888-482-4950
WESTAR ENERGY	1-800-544-4857

3. UTILITY SERVICE LINES, POLES, ETC. ARE TO BE ADJUSTED AS NECESSARY BY OTHERS PRIOR TO CONSTRUCTION UNLESS THE PLANS SPECIFICALLY CALL FOR THEIR ADJUSTMENT BY THE CONTRACTOR OR UNLESS THE PLANS SPECIFICALLY IDENTIFY A UTILITY TO BE ADJUSTED BY ITS OWNER DURING CONSTRUCTION. EXISTING UTILITIES AND THEIR LOCATION, AS SHOWN ON THE PLANS, REPRESENT THE BEST INFORMATION OBTAINABLE FOR DESIGN. THE CONTRACTOR WILL BE REQUIRED TO WORK AROUND EXISTING UTILITIES WITHIN THE RIGHT-OF-WAY WHICH DO NOT CONFLICT WITH PROPOSED CONSTRUCTION.
4. RUBBLE FROM THE REMOVAL OF MISCELLANEOUS STRUCTURES AND EXCESS EXCAVATION WHICH IS TO BE WASTED SHALL BE DISPOSED OF ON SITES TO BE PROVIDED BY THE CONTRACTOR. THESE SITES SHALL BE APPROVED BY THE ENGINEER AS TO SUITABILITY, APPEARANCE AND SITE LOCATION. LOCATIONS, IN THE OPINION OF THE ENGINEER, THAT WILL LEAVE AN UNSIGHTLY APPEARANCE WILL NOT BE APPROVED. ALL DISPOSAL SITES MUST BE APPROVED BY THE KANSAS DEPARTMENT OF HEALTH AND ENVIRONMENT. MATERIAL EITHER STOCKPILED OR DISPOSED OF IN A FLOOD PLAIN WILL REQUIRE A KANSAS STATE BOARD OF AGRICULTURE PERMIT. ANY MATERIAL DUMPED IN WATERS OF THE UNITED STATES OR WETLANDS IS SUBJECT TO U.S. CORPS OF ENGINEERS PERMITTING REGULATIONS. ANY MATERIAL BURIED OR STOCKPILED BEYOND APPROVED CONSTRUCTION LIMITS WILL REQUIRE ADDITIONAL ARCHAEOLOGICAL INVESTIGATIONS UNLESS BURIED IN A PREVIOUSLY APPROVED BORROW LOCATION.
5. TREES AND SHRUBS IN PUBLIC RIGHT-OF-WAY WHICH ARE IN DIRECT CONFLICT WITH PROPOSED NEW CONSTRUCTION SHALL BE REMOVED BY THE CONTRACTOR WITH THE ENGINEER'S APPROVAL. TREES AND SHRUBS WHICH ARE NOT IN DIRECT CONFLICT WITH PROPOSED NEW CONSTRUCTION SHALL BE SAVED AND PROTECTED FROM DAMAGE.
6. THE CONTRACTOR SHALL GIVE ALL PROPERTY OWNERS AND/OR TENANTS OF DEVELOPED PROPERTY ABUTTING THE CONSTRUCTION OF THIS PROJECT A MINIMUM OF TEN (10) DAYS NOTICE PRIOR TO START OF CONSTRUCTION.
7. THE CONTRACTOR SHALL BE RESPONSIBLE FOR PRESERVING PROPERTY IRONS. THE CONTRACTOR WILL BE REQUIRED TO RE-ESTABLISH ANY PROPERTY IRONS WHICH ARE DAMAGED OR DESTROYED BY HIS CONSTRUCTION OPERATIONS. SUCH IRONS SHALL BE RE-ESTABLISHED BY A LICENSED LAND SURVEYOR IN ACCORDANCE WITH STATE LAWS.
8. THE WATER DISTRIBUTION DIVISION SHALL FIELD LOCATE WATER VALVES ONE TIME DURING CONSTRUCTION WHEN REQUESTED BY THE CONTRACTOR. IT SHALL BE THE CONTRACTOR'S RESPONSIBILITY TO PRESERVE SUCH FIELD LOCATIONS DURING THE CONSTRUCTION PROCESS. WATER VALVES, VALVE BOXES OR FIRE HYDRANTS DAMAGED DURING CONSTRUCTION SHALL BE REPAIRED BY CONTRACTOR AT HIS OWN EXPENSE. VALVE BOXES AND WATER METERS WITHIN THE PROJECT LIMITS SHALL BE ADJUSTED TO MATCH FIELD GRADES.
9. THE CONTRACTOR SHALL NOTIFY THE CONSULTANT ENGINEER AND TOM MASON WITH THE CITY AT 316-268-4574 WITH THE ANTICIPATED CONSTRUCTION START DATE AND NOTIFY THEM OF PROJECT COMPLETION. STAKING AND INSPECTION FOR THIS PROJECT WILL BE THE RESPONSIBILITY OF THE CONTRACTOR.
10. IF TRAFFIC WILL BE IMPACTED BY CONSTRUCTION, A TRAFFIC CONTROL PLAN MUST BE SUBMITTED AND APPROVED BY THE CITY TRAFFIC ENGINEER, BRIAN COOK AT [TRAFFIC@WICHITA.GOV](mailto:TRAFFIC@WICHITA.GOV) BEFORE CONSTRUCTION CAN BEGIN. THE CONTRACTOR SHALL BE RESPONSIBLE FOR ALL TRAFFIC CONTROL MEASURES TO FACILITATE CONSTRUCTION. ALL CONSTRUCTION ZONE MARKINGS AND SIGNAGE SHALL CONFORM TO THE LATEST VERSION OF THE MANUAL ON UNIFORM TRAFFIC CONTROL DEVICES (MUTCD) AS PUBLISHED BY THE US DEPT. OF TRANSPORTATION, FEDERAL HIGHWAY ADMINISTRATION. ALL COSTS ASSOCIATED WITH CONSTRUCTION MARKINGS AND SIGNAGE SHALL BE THE CONTRACTOR'S RESPONSIBILITY.
11. ALL ELEVATIONS SHOWN ARE NAVD 88.
12. ALL AREAS DISTURBED DURING CONSTRUCTION THAT WILL NOT BE UNDER PROPOSED PAVEMENT SHALL BE RESTORED TO MATCH EXISTING CONDITIONS.

13. ALL STUBS AND PLUGGED PIPES SHALL BE LOCATED WITH GREEN PLASTIC TAPE IN THE SAME MANNER AS RISERS.
14. CONNECTING TO EXISTING MANHOLES: PRIOR TO LAYING SEWER LINES USING EXISTING STUBS IN EXISTING MANHOLES, THE CONTRACTOR SHALL EXPOSE AND VERIFY THE ELEVATION, GRADE AND ALIGNMENT OF EXISTING STUBS AND NOTIFY THE ENGINEER OF ANY DEVIATION FROM THE PLANS. WHERE CONNECTION TO AN EXISTING MANHOLE THAT DOES NOT HAVE AN EXISTING STUB OR THE STUB IS UNUSABLE DUE TO ELEVATION GRADE OR ALIGNMENT, THE CONTRACTOR SHALL CORE CUT INTO EXISTING MANHOLE WALL TO MAKE CONNECTION USING APPROVED WATER STOP GASKET, AND RESHAPE THE EXISTING MANHOLE INVERT TO PROVIDE SMOOTH FLOW. THE COST FOR CONNECTING TO EXISTING MANHOLES IS INCIDENTAL TO THE PROJECT.
15. CONTRACTOR SHALL LIMIT THE EXTENT OF TRENCH OPEN OVERNIGHT AND WEEKENDS TO LESS THAN 50 FEET.
16. CONTRACTOR SHALL PROVIDE POSITIVE DRAINAGE AWAY FROM ALL MANHOLE COVERS.
17. THE CONTRACTOR SHALL PREVENT ANY CONSTRUCTION DEBRIS FROM ENTERING THE EXISTING SANITARY SEWER DURING CONSTRUCTION.
18. THE CONTRACTOR SHALL BE RESPONSIBLE FOR MAINTAINING CONTINUOUS FLOW OF SEWAGE THROUGH CONSTRUCTION. CONTRACTOR'S PROPOSED METHOD FOR MAINTAINING SEWAGE FLOW SHALL BE SUBMITTED AND APPROVED BY THE SEWER MAINTENANCE DIVISION (316-268-4073) PRIOR TO STARTING AND BY-PASSING OF SEWAGE FLOWS.
19. ANY OVER EXCAVATION FROM MANHOLE AND PIPE REMOVAL SHALL BE BACKFILLED WITH AB-3 COMPACTED TO 90-95% ASTM D698.
20. CITY MAINTENANCE OF SANITARY SEWER MAINS ENDS AT LAST STRUCTURE WITHIN THE EASEMENT OR RIGHT-OF-WAY.
21. ANY SIDEWALK, DRIVE APPROACH, CURB, OR STREET PAVEMENT REMOVED TO CONSTRUCT PROJECT MUST HAVE A PAVEMENT CUT PERMIT AND BE REPLACED BY THE CITY CONTRACTOR. PERMITS CAN BE OBTAINED BY CALLING 316-268-4501 OR 316-268-4480.
22. THE CONTRACTOR SHALL INSTALL AND/OR MAINTAIN EROSION CONTROL METHODS AS SPECIFIED. THE GENERAL LOCATION OF THE REQUIRED EROSION CONTROL IS ILLUSTRATED ON THE EROSION CONTROL PLAN. THE CONTRACTOR SHALL BE RESPONSIBLE FOR MAINTAINING THE EROSION CONTROL SHOWN THROUGHOUT THE COMPLETION OF THIS PROJECT. INSTALLATION OF THESE BMP'S DOES NOT RELIEVE THE CONTRACTOR OF THE RESPONSIBILITY OF ABATING SOIL EROSION.

AS-BUILT PLANS  
CONTRACTOR: DONDLINGER CONSTRUCTION  
INSPECTOR: LEVI TURNER  
RUGGLES & BOHM  
PDF BY: LCT 10/7/2016

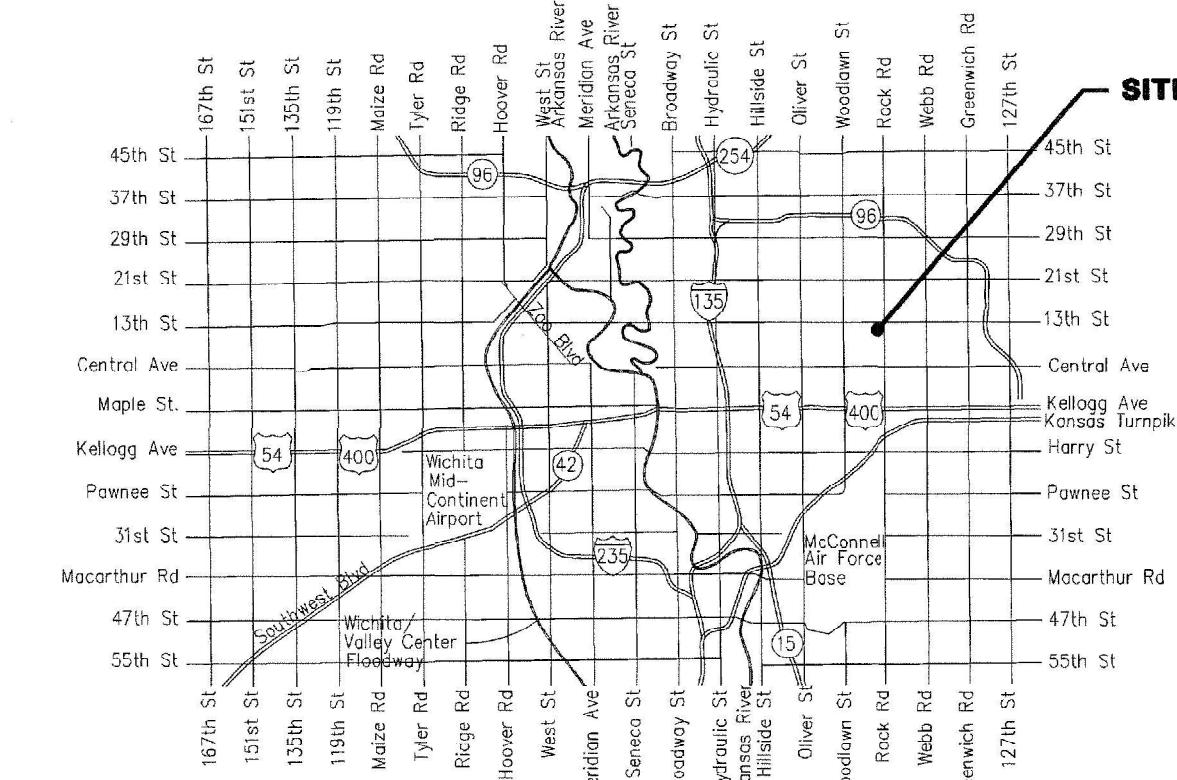
## SANITARY SEWER to serve

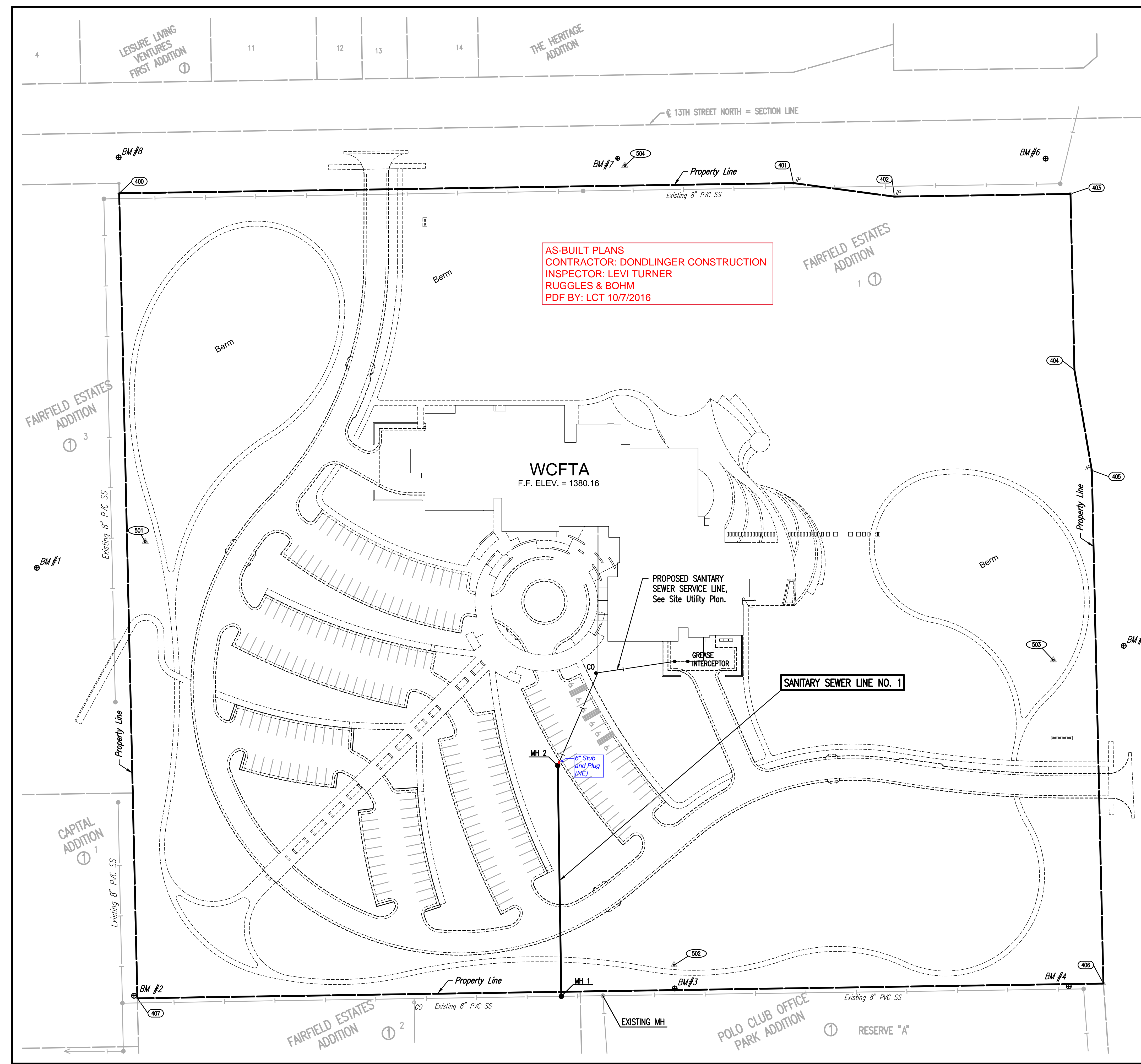
# THE WICHITA CENTER FOR THE ARTS

1307 N. ROCK ROAD, WICHITA, KANSAS  
CITY OF WICHITA, KANSAS

Gary Janzen, P.E. City Engineer  
Project Number  
2279 PPS (607861)

T. Mason - City of Wichita, Inspector  
Release Date: 10/25/2016  
: apr 10/26/2016





AS-BUILT PLANS  
CONTRACTOR: DONDLINGER CONSTRUCTION  
INSPECTOR: LEVI TURNER  
RUGGLES & BOHM  
PDF BY: LCT 10/7/2016

**PROPERTY COORDINATE LIST**

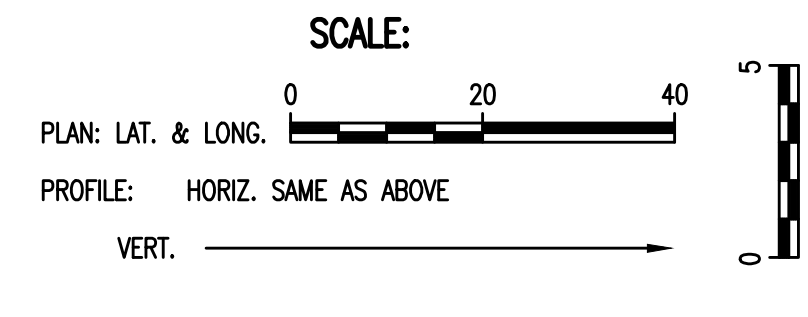
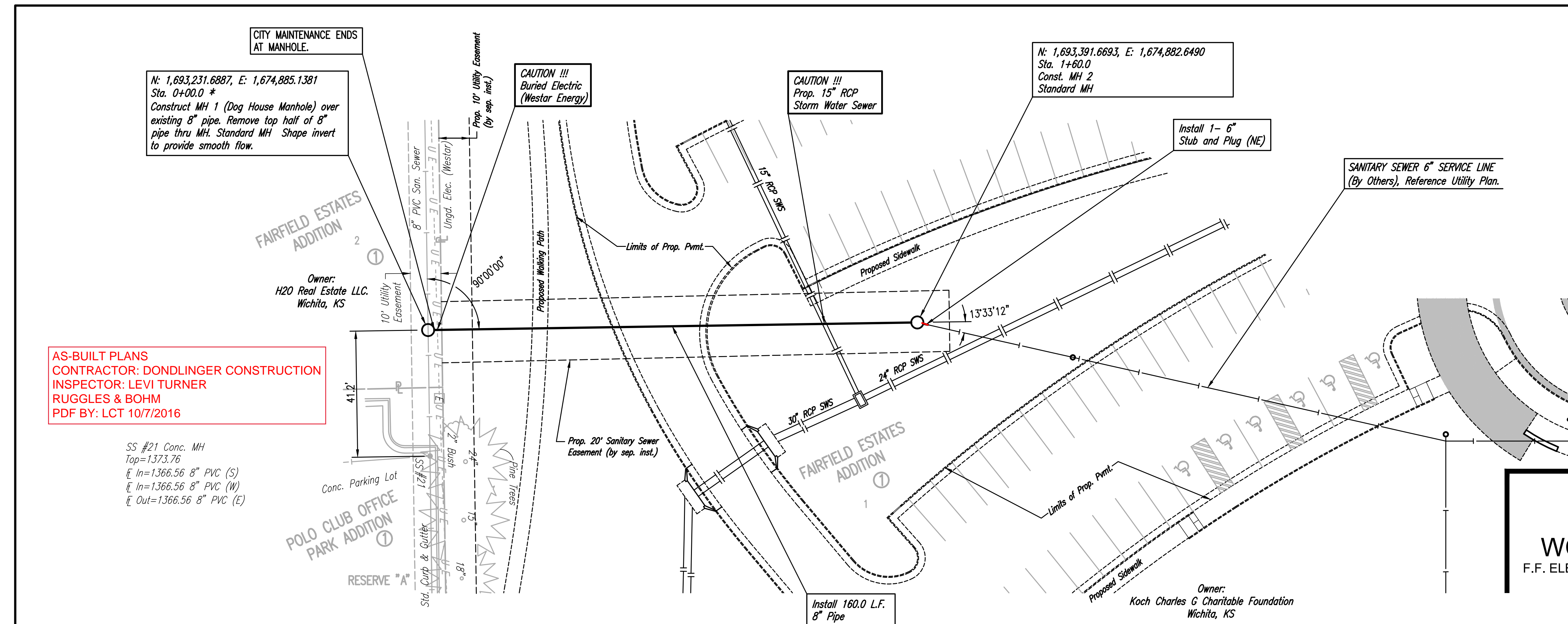
POINT	NORTHING	EASTING
400	1,694,029.5478	1,674,445.8674
401	1,694,039.7537	1,675,115.8997
402	1,694,026.2785	1,675,216.1178
403	1,694,028.9438	1,675,391.0976
404	1,693,853.9882	1,675,395.0429
405	1,693,754.3505	1,675,412.2936
406	1,693,244.3702	1,675,423.7939
407	1,693,229.7492	1,674,463.9053

④ = COORDINATE POINT NO.

- BENCH MARK LIST @ BM #1**
- BM #1 - CHISELED "d" ON TOP OF SOUTHEAST SIDE OF CONCRETE LIGHT POLE BASE IN PARKING LOT FOR REFORMATION LUTHERAN CHURCH, SOUTHWEST OF BASKETBALL GOAL. ELEV.=1386.01 (NAV88)
  - BM #2 - CHISELED "d" ON TOP OF EAST CURB BEHIND RETIREMENT HOME, NEAR NORTH END OF 6' CONCRETE WALL. ELEV.=1379.55 (NAV88)
  - BM #3 - CHISELED "d" ON TOP OF NORTH SIDE OF CONCRETE LIGHT POLE BASE, NORTH NORTHEAST OF NORTH ENTRANCE TO ROCK ROAD DENTAL GROUP, NEAR THE SOUTH LINE OF WICHITA CENTER FOR THE ARTS PROPERTY. ELEV.=1375.33 (NAV88)
  - BM #4 - CHISELED "d" ON TOP OF NORTH CURB FOR LENZ EYE CARE, ±3' WEST OF THE NORTHEAST CORNER OF THE PARKING AREA. ELEV.=1372.79 (NAV88)
  - BM #5 - CHISELED "d" ON TOP OF WEST CURB OF ROCK ROAD, SOUTH OF INTERSECTION WITH 13TH STREET, WEST OF 2ND HIGH LINE POLE SOUTH OF 13TH STREET. ELEV.=1376.01 (NAV88)
  - BM #6 - CHISELED "d" ON THE SOUTHWEST CORNER OF CURB INLET, IN THE SOUTH CURB OF 13TH STREET, AT THE SOUTHWEST CORNER OF INTERSECTION OF 13TH STREET AND ROCK ROAD. ELEV.=1376.61 (NAV88)
  - BM #7 - CHISELED "d" ON THE SOUTHWEST CORNER OF CURB INLET IN THE SOUTH CURB OF 13TH STREET, SOUTH OF ENTRANCE TO THE HERITAGE HOUSING COMPLEX. ELEV.=1380.88 (NAV88)
  - BM #8 - CHISELED "d" ON TOP OF SOUTH CURB OF 13TH STREET, NEAR NORTHEAST CORNER OF REFORMATION LUTHERAN CHURCH PROPERTY. ELEV.=1386.53 (NAV88)

- CONTROL POINTS @ CP1**
- PL. No. 501  
#4 REBAR IN GRASS EAST OF ASPHALT PARKING FOR CHURCH  
N: 1,693,683.327; E: 1,674,471.883
- 64.7' NORTHWEST TO SOUTH CORNER BASKETBALL GOAL
  - 101.0' SOUTH SOUTHWEST TO NORTHEAST END TOP OF CURB
  - 111.1' WEST SOUTHWEST TO CHISELED "d" ON CONC. LIGHT BASE "BMK-1"
  - 400.0' NORTH TO E. OF 13TH STREET
- PL. No. 502  
#4 REBAR IN GRASS ON SOUTH LINE OF WICHITA CENTER FOR THE ARTS SITE  
N: 1,693,262.651; E: 1,674,997.154
- 23.0' SOUTH SOUTHWEST TO CHISELED "d" ON TOP OF LIGHT BASE "BMK-3"
  - 55.7' EAST SOUTHWEST TO NORTHWEST CORNER OF ELECTRIC BOX
  - 79.5' WEST SOUTHWEST TO NORTHWEST CORNER OF TOP OF CURB
  - 75.0' SOUTHWEST TO CHISELED "d" ON TOP OF WEST CURB OF ROCK ROAD
- PL. No. 503  
#4 REBAR IN GRASS NEAR EAST LINE OF WICHITA CENTER FOR THE ARTS SITE  
N: 1,693,565.724; E: 1,675,374.045
- 70.8' EAST TO BACK OF WEST CURB OF ROCK ROAD
  - 47.5' NORTHEAST TO SOUTH FACE OF 10" CRAB APPLE TREE
  - 27.2' SOUTHWEST TO NORTH FACE OF 12" MAPLE TREE
  - 71.5' EAST NORTHEAST TO CHISELED "d" ON TOP OF WEST CURB OF ROCK ROAD
- PL. No. 504  
#4 REBAR IN GRASS SOUTH OF SIDEWALK, SOUTH R/W 13TH STREET  
N: 1,694,027.043; E: 1,674,948.192
- 2.0' NORTH TO BACK OF SIDEWALK
  - 17.7' EAST SOUTHWEST TO NORTH FACE OF 12" ELM
  - 10.0' NORTHWEST TO CHISELED "d" ON SOUTHWEST CORNER OF INLET "BMK-7"
  - 46.6' SOUTHWEST TO CENTER OF SANITARY SEWER MANHOLE

No.	Revision	By	Date
	CITY OF WICHITA, KANSAS THE WICHITA CENTER FOR THE ARTS PPS KEY MAP GARY JANZEN, P.E. - CITY ENGINEER CITY OF WICHITA PROJECT NO. 2279 PPS (607861)		
<b>PEC</b> PROFESSIONAL ENGINEERING CONSULTANTS P.A. 303 SOUTH TOPEKA WICHITA, KS 67202 316-262-2681 www.pec1.com			
Designed by	JAG, SAD	Job No.	15695-000
Drawn by	CSL	Date	JULY 2016
			Sh. C5.2 of

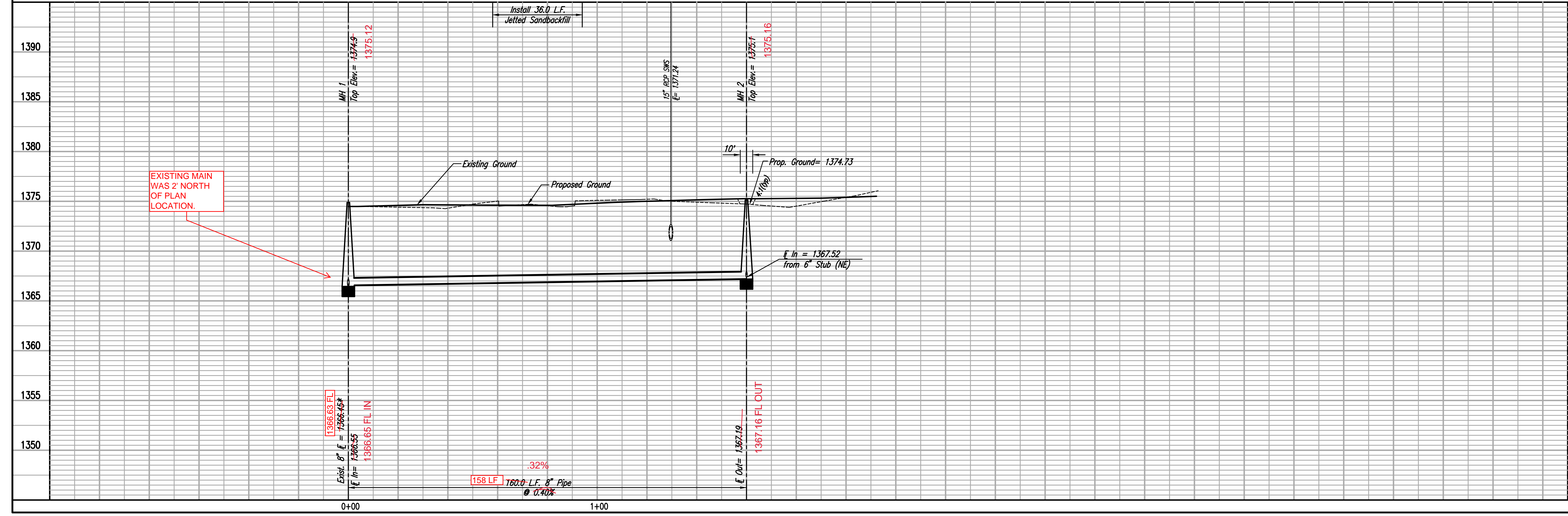


\* PRIOR TO BEGINNING CONSTRUCTION, THE CONTRACTOR SHALL EXCAVATE THE EXISTING 8" PVC PIPE AT SANITARY SEWER STATION 0+00.0 TO VERIFY ITS HORIZONTAL AND VERTICAL LOCATION. THE PIPE LOCATION SHALL BE REPORTED TO THE ENGINEER SO THAT ANY NECESSARY PLAN MODIFICATIONS CAN BE MADE. ANY ADDITIONAL LABOR OR MATERIALS MODIFICATIONS TO COMPLETE THE CONNECTION SHALL BE CONSIDERED SUBSIDIARY TO THE PROJECT.

AS-BUILT PLANS  
CONTRACTOR: DONDLINGER CONSTRUCTION  
INSPECTOR: LEVI TURNER  
RUGGLES & BOHM  
PDF BY: LCT 10/7/2016

SS #21 Conc. MH  
Top=1373.78  
I In=1366.56 8" PVC (S)  
I In=1366.56 8" PVC (W)  
I Out=1366.56 8" PVC (E)

**SANITARY SEWER LINE NO 1**



<b>PEPC</b> PROFESSIONAL ENGINEERING CONSULTANTS P.A. 303 SOUTH TOPEKA WICHITA, KS 67202 316-262-2891 www.pec1.com	
City of Wichita, Kansas THE WICHITA CENTER FOR THE ARTS SANITARY SEWER LINE NO 1 GARY JANZEN, P.E. - CITY ENGINEER CITY OF WICHITA PROJECT NO. 2279 RFS (607861)	Job No. 15695-000 Date JULY 2016
Designed By JAC, SAD Drawn By CSL	Sheet of

PLAN	CHECKED	CHECKED
BY	DATE	

PROFILE	CHECKED	CHECKED
BY	DATE	

**MANHOLE FRAME & COVER AS SPECIFIED**

**DOG HOUSE MANHOLE (OVER EXISTING PIPE)**  
Not to Scale

**STANDARD MANHOLE**  
Not to Scale

**STANDARD OUTSIDE DROP MANHOLE**  
Not to Scale

**SHALLOW MANHOLE**  
Not to Scale

**MANHOLE BASE DETAIL**  
Not to Scale

**CLEANOUT RISER BOX DETAIL**  
Not to Scale

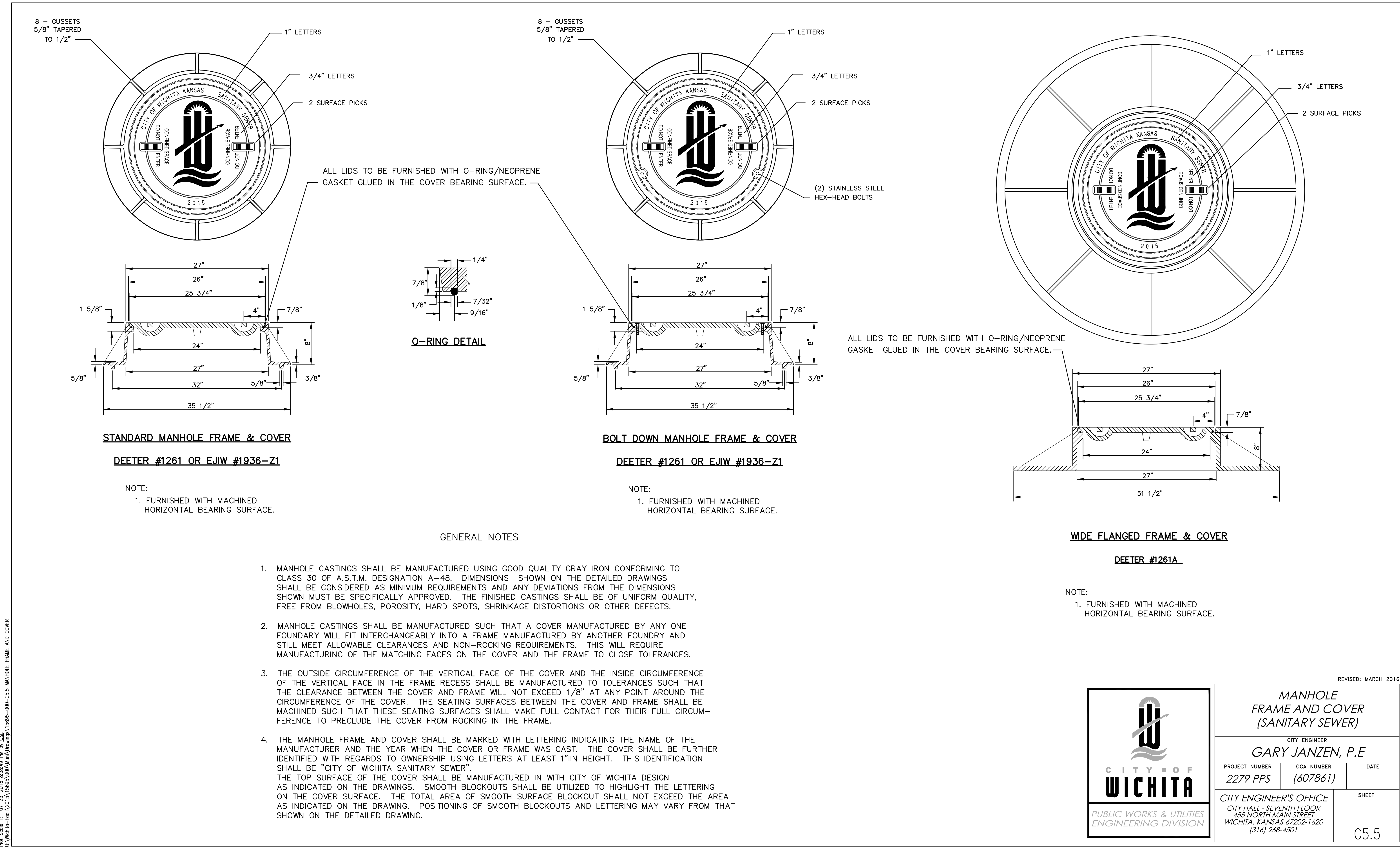
**RISER PIPE RESTRAINING ASSEMBLY**  
Not to Scale

**SANITARY SEWER MANHOLE DIAMETERS**

DIAMETER	DEPTH	PIPE SIZE
4'	0'-15'	8"-18"
5'	>15'-30'	21"-30"
6'	>30'	36"-60"

**PRECAST MANHOLE GENERAL NOTES**

- ALL PRECAST CONCRETE MANHOLE SECTIONS SHALL CONFORM TO THE LATEST REVISIONS OF A.S.T.M. C478 AS MODIFIED BY THE SPECIFICATIONS.
- NON-SHRINK GROUT SHALL BE NON-METALLIC TYPE.
- APPROVED FLEXIBLE WATERSTOP SHALL BE INSTALLED TO JOIN THE SEWER PIPE TO THE MANHOLE WALL. THE SEWER PIPE SHALL BE SUPPORTED WITH CRUSHED ROCK A MINIMUM OF 3 FEET FROM THE MANHOLE WALL AND TO THE FIRST JOINT FOR V.C.P. SUCH THAT THE JOINT REMAINS FLEXIBLE.
- ALL INSIDE SURFACES OF THE CONCRETE MANHOLE WHICH WOULD BE EXPOSED TO SEWER GAS SHALL BE COATED PER SECTION 804.4 OF STANDARD SPECIFICATIONS.
- EXTERIOR MANHOLE WALLS SHALL BE COATED PER SECTION 804.4 OF STANDARD SPECIFICATIONS.
- JOINT SEALING COMPOUND SHALL BE PER 804.4 OF STANDARD SPECIFICATIONS.
- ALL MANHOLE SECTION JOINTS THAT WILL BE IN GROUNDWATER OR GREATER THAN 12' DEEP SHALL BE WRAPPED WITH AN EXTERNAL JOINT SEAL PER SECTION 804.4 OF STANDARD SPECIFICATIONS, AS INDICATED BY THE PLANS.
- PRECAST MANHOLES SHALL BE SET AT LEAST 4 INCHES INTO THE MANHOLE BASE FOR DOG HOUSE MANHOLES.
- TOP OF MANHOLE FLOOR SLAB SHALL BE AT LEAST 3 INCHES BELOW THE FLOW LINE OF THE OUTLET PIPE TO INSURE SUFFICIENT MINIMUM THICKNESS OF SHAPED INVERT.
- LIFTING HOLES SHALL BE FILLED WITH NON-SHRINK GROUT AND THE INTERIOR SURFACE COATED AS SPECIFIED.
- MORTAR USED IN MASONRY CONSTRUCTION SHALL CONTAIN 8 SACKS OF CEMENT PER CUBIC YARD. CONCRETE USED IN MANHOLE BASES SHALL CONFORM TO THE REQUIREMENTS OF CONCRETE FOR CONCRETE PAVEMENT CONSTRUCTION AS SPECIFIED IN THE CITY STANDARD PAVING SPECIFICATIONS USING CITY CONCRETE PAVEMENT MIX WITHOUT AIR ENTRAINING ADMIXTURE. MORTAR SHALL BE PLACED AROUND THE MANHOLE RING AS SHOWN ON THE DRAWINGS WHEN MANHOLES ARE CONSTRUCTED IN UNPAVED AREAS. COMPLETED MANHOLE SHALL BE WITHOUT LEAKS AND WATER TIGHT.
- REINFORCING STEEL SHALL BE INSTALLED IN THE MANHOLE BASES AND SHALL CONSIST OF NO.4 BARS PLACED ON 6" CENTERS IN BOTH DIRECTIONS. THE MANHOLE BASE REINFORCEMENT SHALL BE PLACED AT LEAST 3" ABOVE THE BOTTOM OF THE MANHOLE BASE. ALL COSTS FOR FURNISHING AND INSTALLING REINFORCING STEEL SHALL BE INCLUDED IN THE UNIT PRICE BID FOR THE MANHOLE.
- WALL THICKNESS SHALL BE 1" GREATER THAN MANHOLE DIAMETER IN FEET.
- OPENINGS SHALL BE CORE DRILLED INTO THE MANHOLE WALL WHEN OUTSIDE DROPS ARE CONSTRUCTED ON EXISTING MANHOLES. SUCH OPENINGS DRILLED INTO EXISTING MANHOLES SHALL BE AS SMALL AS PRACTICAL TO FACILITATE INSTALLING AND GROUTING THE NEW PIPE IN PLACE. WATERSTOP GASKETS SHALL BE USED WITH P.V.C. PIPE. THE NEW PIPE SHALL BE GROUTED INTO THE OPENING USING AN APPROVED NONSHRINK GROUT FOR THE FULL MANHOLE WALL THICKNESS. THE EXTERIOR OF THE COMPLETED CONNECTION SHALL BE SEALED WITH AN APPROVED BITUMINOUS COATING SUCH THAT THE CONNECTION WILL BE WATER TIGHT. FLOOR OF MANHOLE SHALL BE MODIFIED TO FORM NEW FLOW CHANNEL FOR THE NEW CONNECTION AS INDICATED BY THE DRAWING. THIS WORK, INCLUDING MODIFICATION OF MANHOLE FLOOR, SHALL BE PAID FOR AT THE UNIT PRICE BID FOR OUTSIDE DROP STACK CONSTRUCTED ON EXISTING MANHOLE.
- THE FLOORS OF ALL MANHOLES SHALL BE SHAPED WITH FLOW CHANNELS SUCH THAT THE MANHOLES WILL BE SELF-CLEANING AND FREE OF AREAS WHERE SOLIDS COULD BE DEPOSITED AS SEWAGE FLOWS THROUGH THE MANHOLE FROM ALL INLET PIPES TO THE OUTLET PIPE. FLOW CHANNELS SHALL BE FORMED TO MATCH THE BOTTOM HALVES OF THE INFLOWING PIPES AND THE OUTFLOWING PIPE AS SHOWN BY THE DRAWINGS. MANHOLE FLOORS SHALL HAVE SLOPES OF 3 INCHES PER FOOT IN THE AREAS OUTSIDE OF THE FLOW CHANNELS SLOPED TOWARD THE FLOW CHANNELS. PIPES LAID THROUGH MANHOLES SHALL HAVE THE TOP HALF REMOVED TO NEAT LINES FOR THE FULL INSIDE DIAMETER OF THE MANHOLE. MANHOLE FLOORS SHALL THEN BE SHAPED AROUND THE BOTTOM HALF OF THE PIPE WHICH FORMS THE FLOW CHANNEL.
- MANHOLE COVER CASTINGS AND MANHOLE FRAME CASTINGS SHALL CONFORM TO THE REQUIREMENTS AS INDICATED IN THE STANDARD SPECIFICATIONS AND AS SHOWN IN THE STANDARD DETAIL DRAWING.
- THE VERTICAL DROP IN STANDARD MANHOLES SHALL NOT EXCEED 2' REGARDLESS OF PIPE SIZE. THE CROWNS OF INFLOWING PIPES SHALL NEVER BE SET LOWER THAN THE CROWN OF THE OUTFLOWING PIPE.
- STANDARD MANHOLES SHALL BE BID AS STANDARD MANHOLES FOR THE TYPE AND DIAMETER INDICATED. OUTSIDE DROP MANHOLES SHALL BE BID AS STANDARD OUTSIDE DROP MANHOLES FOR THE TYPE AND DIAMETER INDICATED. ALL MANHOLE DIAMETERS WILL BE 4' UNLESS INDICATED OTHERWISE.
- PRECAST CONCRETE SPACERS OR BRICK MASONRY COLLAR SHALL BE INSTALLED BETWEEN THE CAST IRON FRAME AND THE CONCENTRIC CONE. THE COLLAR WILL HAVE 8" WALLS AND A VERTICAL HEIGHT OF 8" MINIMUM AND 18" MAXIMUM. A 1" COAT OF MORTAR WILL BE PLASTERED ON THE OUTSIDE OF THE COLLAR. THE USE OF PRE-CAST CONCRETE SPACERS FOR MANHOLE TOP ADJUSTMENT IS ALSO ALLOWED.
- THE FULL DIAMETER OF THE MANHOLE SHALL EXTEND THE ENTIRE DEPTH OF THE MANHOLE TO THE CONE SECTION. NO REDUCTION IN MANHOLE DIAMETER WILL BE ALLOWED.
- REFER TO PLANS FOR SIZE OF OUTSIDE DROP RISER, SADDLES AND CROSSES.



Saved: 07-05-2016 10:04:48 AM by: CSL  
 Plot Scale: 1" = 0' - 0" (2016 8:38:49 PM) by: CSL  
 U:\Wichita-Facility\2015\15095-000 Main Drawings\15095-000-55.5 MANHOLE FRAME AND COVER

Saved: 07-05-2016 10:04:48 AM by: CSL  
 Plot Scale: 1" = 0' - 0" (2016 8:38:49 PM) by: CSL  
 U:\Wichita-Facility\2015\15095-000 Main Drawings\15095-000-55.5 MANHOLE FRAME AND COVER