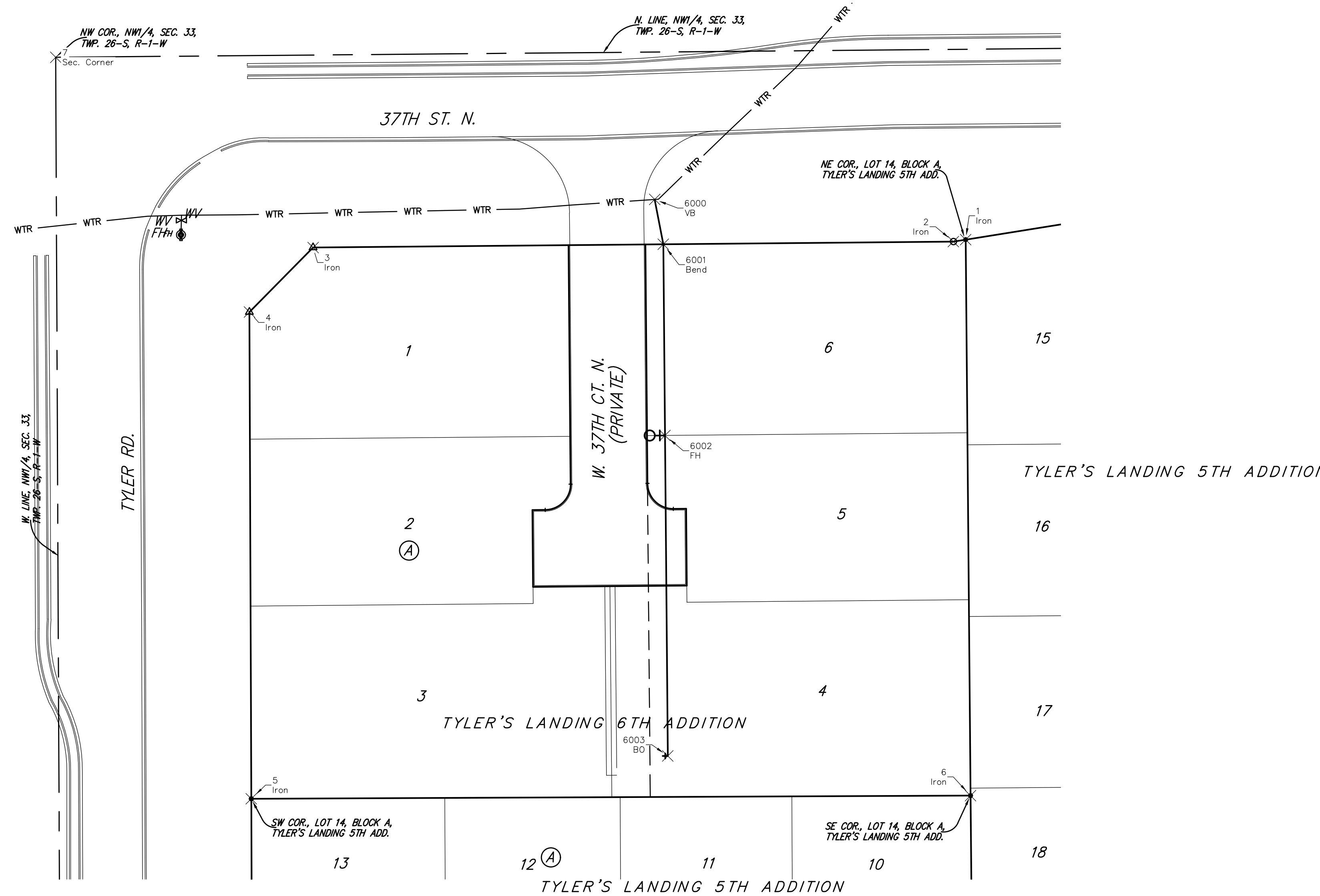
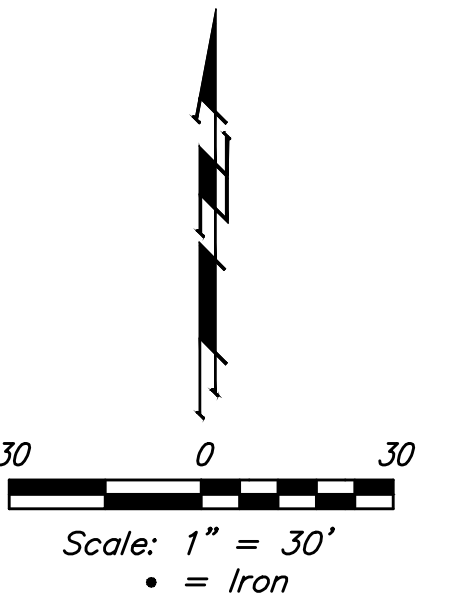


BENCHMARKS:

BM#1: "□" Cut with Cross in Curb Return at Southeast Corner of Intersection of 37th St. N. and Tyler, Approximately 47' South and 49.5' East of the Center of Intersection Elev. = 1343.53 NAVD88

BM#2: "□" Cut with Cross in South Line of 37th St. N. Approximately 41.5' South and 1,026' East of the Center of the Intersection of 37th St. N. and Tyler. Elev. = 1337.39 NAVD88



Water

Point #	Northing	Easting	Description
6000	30049.43	40198.33	VB
6001	30031.92	40201.70	Bend
6002	29957.32	40202.36	FH
6003	29832.26	40203.47	BO

Irons

Point #	Northing	Easting	Description
1	30033.73	40319.69	Iron
2	30032.97	40314.91	Iron
3	30030.66	40065.05	Iron
4	30005.48	40040.19	Iron
5	29815.55	40040.92	Iron
6	29816.78	40321.61	Iron
7	30104.88	39964.59	Sec. Corner

Tyler's Landing 6th Addition
COORDINATES
Water Distribution System

Baughman Company, P.A. 315 Ellis St. Wichita, KS 67211 P 316-262-7271 F 316-262-0149
ENGINEERING | SURVEYING | PLANNING | LANDSCAPE ARCHITECTURE

PROJECT NUMBER 448-90750	DESIGN AEG	DRAWN DJL
REVISIONS:	APPROVED	DATE 8/16
	SCALE Noted	SHEET 11 OF 12

