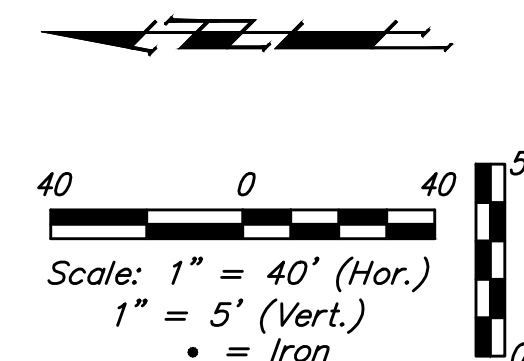
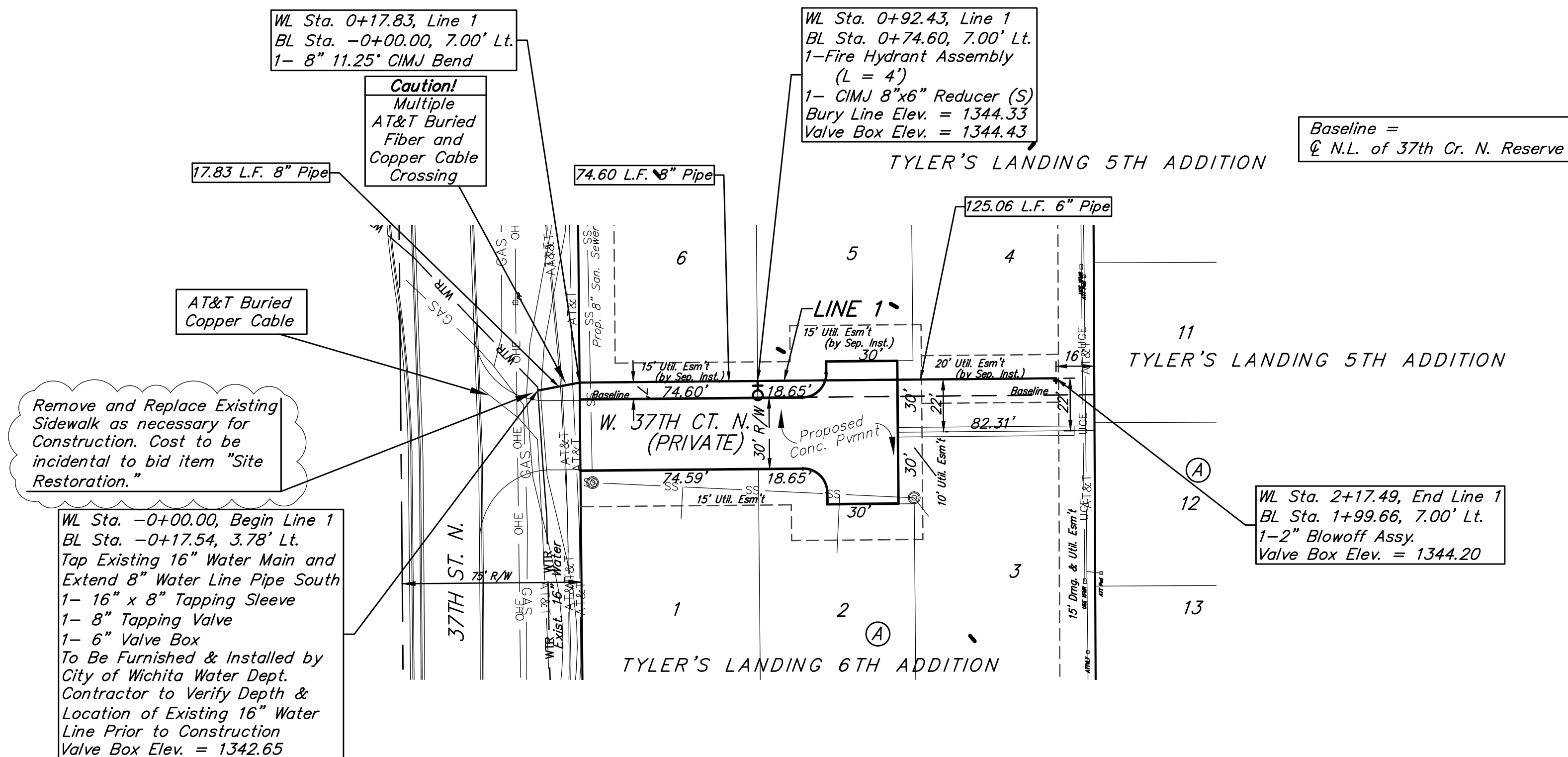


**BENCHMARKS:**

BM#1: "□" Cut with Cross in Curb Return at Southeast Corner of Intersection of 37th St. N. and Tyler, Approximately 47' South and 49.5' East of the Center of Intersection Elev. = 1343.53 NAVD88

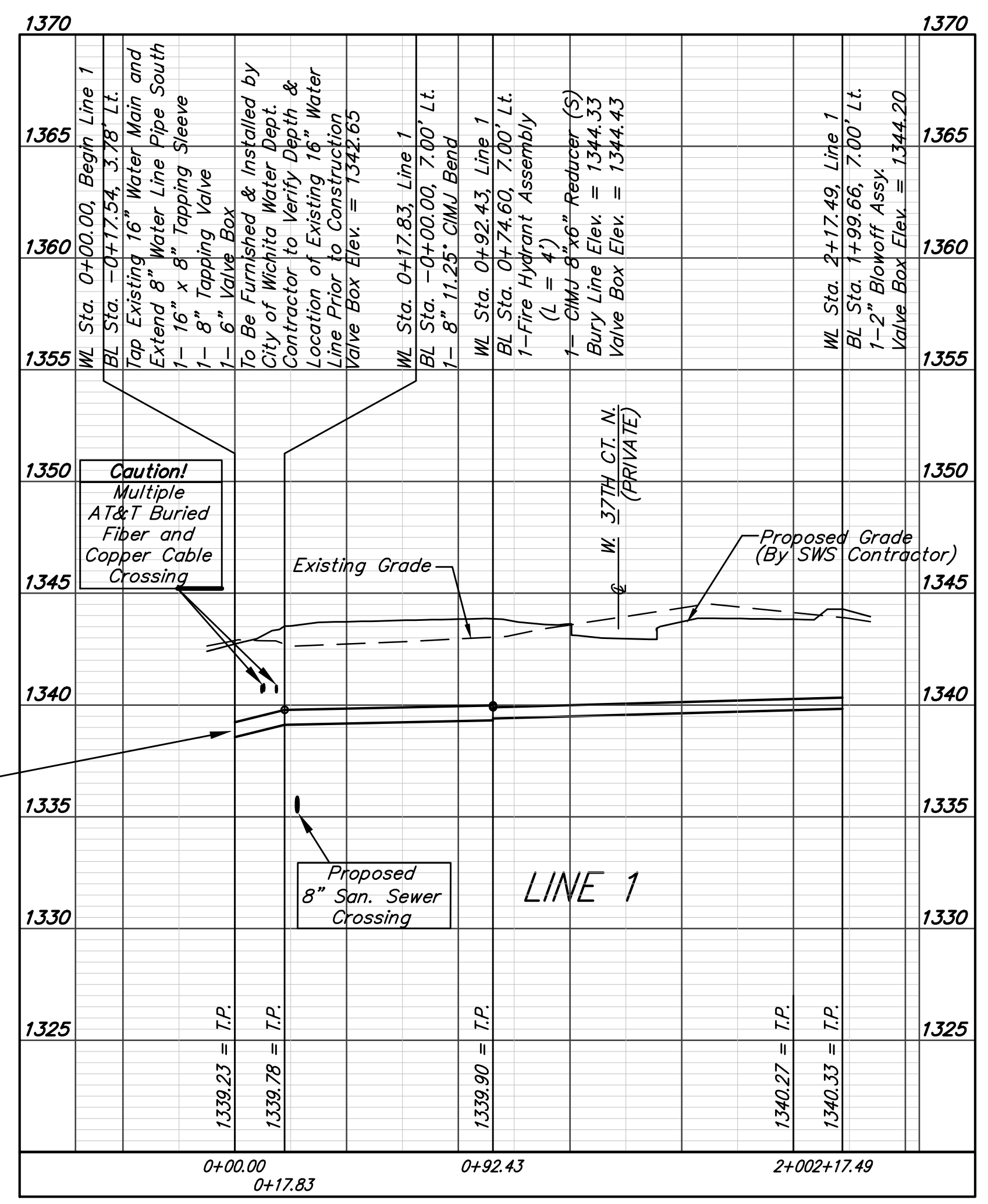
BM#2: "□" Cut with Cross in South Line of 37th St. N. Approximately 41.5' South and 1,026' East of the Center of the Intersection of 37th St. N. and Tyler. Elev. = 1337.39 NAVD88



FIRE HYDRANTS REQUIRED					
LINE	STATION	BURY LINE ELEVATION	TOP OF PIPE ELEVATION	FIRE HYDRANT BURY REQUIRED*	VALVE STEM EXT. REQUIRED (ft)*
1	0+92.43	1344.33	1339.98	5.0'	-

Tap Location may need to be adjusted to provide adequate separation from existing fittings. Additional fittings required shall be considered incidental to the "8" Valve" Bid Item.

Contractor to verify depth and location of existing 16" water line prior to construction.



	Tyler's Landing 6th Addition	
	<b>LINE 1</b>	
Water Distribution System		
<small>Baughman Company, P.A. 315 Ellis St. Wichita, KS 67211 P 316-262-7271 F 316-262-0149 ENGINEERING   SURVEYING   PLANNING   LANDSCAPE ARCHITECTURE</small>		
PROJECT NUMBER 448-90750	DESIGN AEG	DRAWN DJI
REVISIONS: 10/12/16 <small>Schedule Note</small>	DJI	APPROVED DATE 8/16
		SCALE Noted
		SHEET
<b>4 OF 12</b>		