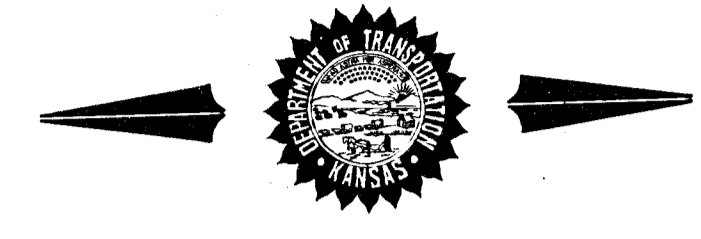
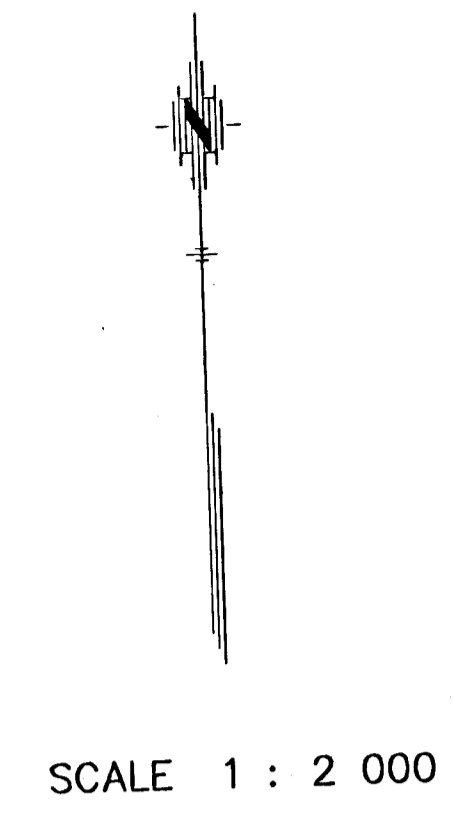


FHWA REG NO.	STATE	PROJECT NO.	YEAR	SHEET NO.	TOTAL SHEETS
7	KANSAS	87-N-0200-01	2001	1	78

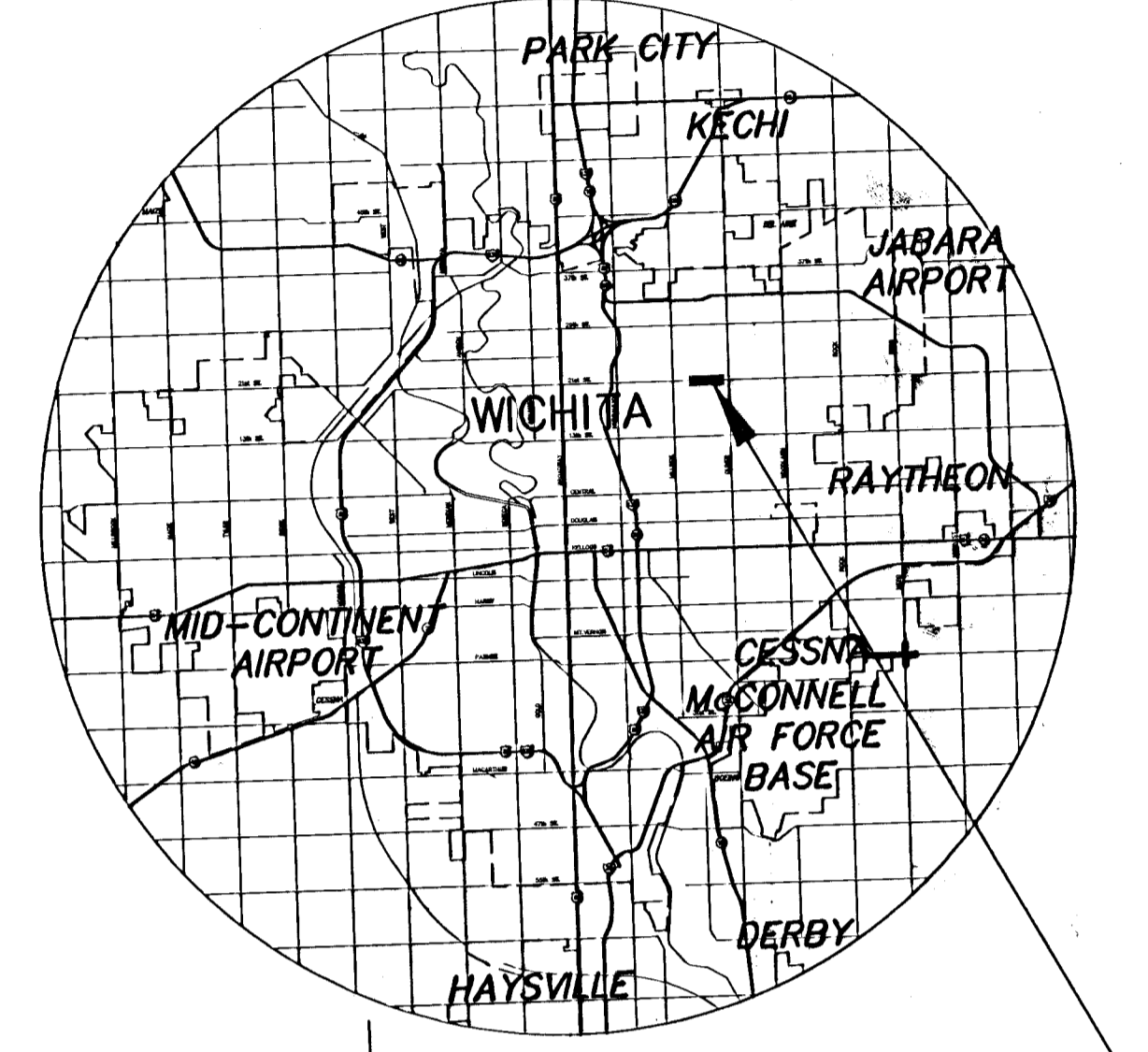
STATE OF KANSAS
DEPARTMENT OF TRANSPORTATION



PLAN AND PROFILE OF PROPOSED
FEDERAL AID PROJECT
21ST STREET NORTH FROM
HILLSIDE TO OLIVER
PROJ. NO. 87-N-0200-01
C.O.W. PROJ. NO. 472-83368
OCA NO. 706823
WICHITA, SEDGWICK COUNTY
POPULATION 311,746



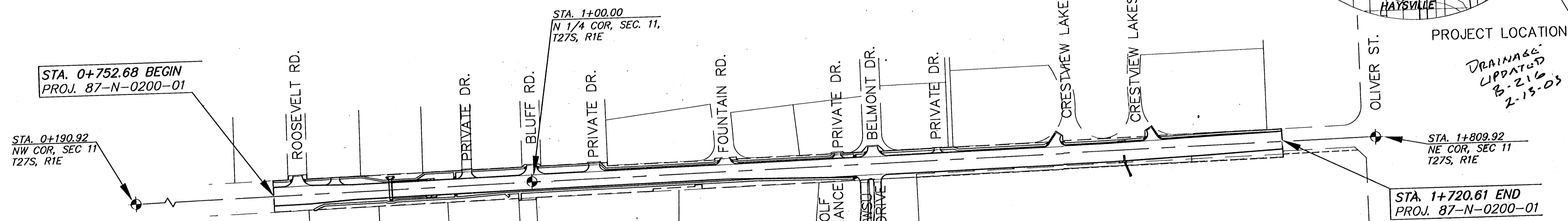
- STP-N020(001)
- GRADING
- SURFACING
- STORM SEWER
- PAVEMENT MARKING
- SEEDING



INDEX OF SHEETS

SHEET NO.	DESCRIPTION
1	Title Sheet
2	Typical Section
3-9	Pavement Plans
10-11	Storm Sewer Plans
12	Water Line Relocation Plan
13-16	Pavement Details
17-22	Storm Sewer Details
23-26	RCB Details
27	Schedule of Inlets & Manholes
28	Water Assembly Details
29	Miscellaneous Details
30	Summary of Quantities
31-36	Temporary Project Water Pollution Control
37-44	Roadside Improvements - Landscaping
45-51	Traffic Signal Plans
52-54	Pavement Marking & Signing Plans
55-63	Construction Staging Sequence & Details
64-65	Drainage Map
66-78	Paving Cross Sections

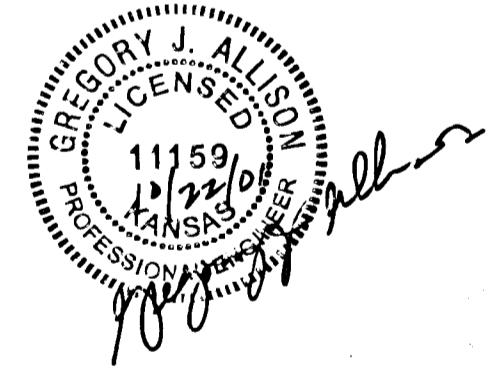
DATE	
BY	
SURVEYED	
CAD TECHNICIAN	
DESIGNERS	
SQUAD	



DESIGN DESIGNATION

AADT (2000)	=	16840
AADT (2030)	=	24850
DHV	=	2500 (2496)
D	=	54.2%
T	=	3.0%
V	=	60 km/h
Control of Access	=	NONE
Clear Zone	=	2m

Datum B.M.
= C.O.W. Bench Mark Disk 12.01 m W.
& 13.41 m N. C/L of 21st & Bluff
Elev=61.289 (C.O.W. Datum)
C.O.W. Elev + 361.920 = NGVD29

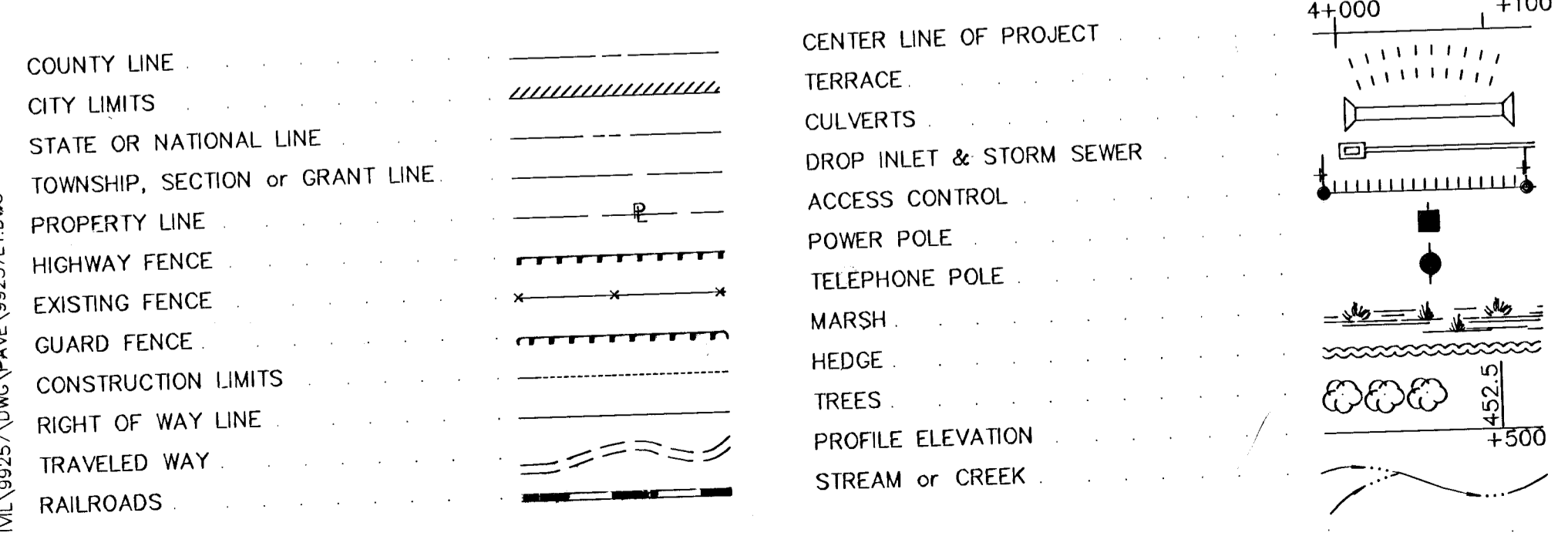


PREPARED & SUBMITTED BY
MKEC ENGINEERING CONSULTANTS, INC.
WICHITA, KANSAS

All Dimensions shown, without a SI suffix, are in millimeters. All elevations shown are in meters.

KDOT METRIC

CONVENTIONAL SIGNS



NOTE: Traffic to be carried through construction

GROSS LENGTH OF PROJECT	967.93 m
EXCEPTIONS	0.00 m
ADDITIONS	0.00 m
NET LENGTH OF PROJECT	967.93 m
NET LENGTH OF BRIDGES	0.00 m
NET LENGTH OF ROAD	967.93 m

NOTE: This project falls within the purview of a nation wide permit authorized under Federal Regulations 33 CFR Part 330 published in the December 23, 1996 Federal Register.

APPROVED - DATE
MICHAEL E. LINDEBAK
CITY ENGINEER
PROJECT NO. 87 N-0200-01

RECOM. FOR APPROVAL-DATE

CHIEF, BUREAU OF LOCAL PROJECTS
KANSAS DEPARTMENT OF TRANSPORTATION

APPROVED - DATE

STATE TRANSPORTATION ENGINEER
KANSAS DEPARTMENT OF TRANSPORTATION