

GENERAL NOTES

The Contractor shall be responsible for preserving existing property irons shown on plans. The Contractor will be required to reestablish any shown property irons which are damaged or destroyed by his construction operations. Such irons shall be reestablished at the Contractor's expense by a licensed land surveyor in accordance with state laws.

A licensed land surveyor shall take field ties to all quarter section corners. The contractor shall set a city survey monument in the required location where such quarter section corners fall within the limits of pavement construction. Survey monuments will be furnished at no cost by the city. The surveyor will accurately locate and install the iron at the quarter section corner. This work shall be paid for under the contract unit price for monument box.

All construction staking shall be performed by the City of Wichita Public Works Department at no cost to the contractor. The contractor shall coordinate the survey staking with the City of Wichita Public Works Department and give the surveyor a minimum 48 hours notice when stakes are required.

Utility service lines, poles, valve boxes, meters, etc... are to be adjusted as necessary by others prior to construction unless the plans specifically call for their adjustment by the contractor. Existing utilities and their location, as shown on the plans, represent the best information obtainable for design. Location information has been obtained from the various utility companies and is either from company record drawings or company provided field locations. The plan locations shown are not guaranteed. Additional existing utilities may also be encountered. The contractor will be required to work around existing utilities within the right-of-way which do not conflict with proposed construction.

The contractor shall adjust water valve boxes as directed by the engineer at a price incidental to Water Line Adjustment (L.S). The water department shall locate water valves one time during construction when requested by the contractor. It shall be the contractor's responsibility to preserve such field locations during the construction process. Water valves or water valve boxes damaged during construction shall be repaired by the contractor at his own expense.

The contractor shall adjust water meter boxes and lids that fall within the area of the new construction at a price incidental to "Water Line Adjustment" (L.S). Copper setters may also have to be adjusted to maintain the 18" dimension from the meter connections to the top of the meter box lid. The water department shall locate meter boxes one time during construction when requested by the contractor. It shall be the contractor's responsibility to preserve such field locations during the construction process. Water meter boxes or lids damaged during construction shall be replaced by the contractor at his own expense.

Properties within the project may have underground irrigation systems (drippers, sprinklers, & valves) which conflict with new construction. Contractor shall remove such components as needed during construction of the project. The irrigation system shall be reinstalled in like kind before project completion. Any irrigation system modifications required because of project improvements shall be coordinated with the property owner. Portions of underground irrigation systems not in conflict with the new construction shall be protected from damage and shall remain in place. All work related to underground irrigation systems shall be bid as "Relocate/Reconstruct Private Sprinkler Systems" (Non-participating).

All stationing, radii, pavement widths, offset distances, etc... are measured from the centerline of the curb and along the project baseline unless otherwise noted on the plans.

A full depth saw cut of the existing surface shall be provided at locations where proposed new construction abuts an existing concrete or bituminous surface for which at least partial removal of that surface is required. Saw cuts shall not be paid for directly, but shall be considered Subsidiary to various surfacing items involved.

Rubble from the removal of miscellaneous structures and excess excavation which is to be wasted shall be disposed of on sites to be provided by the contractor. These sites shall be approved by the Engineer as to suitability, appearance and site location. Locations that, in the opinion of the Engineer, will leave an unsightly appearance will not be approved. All disposal sites must be approved by the Kansas Department of Health and Environment. Material either stockpiled or disposed of in a flood plain would require a Kansas State Board of Agriculture permit. Any material dumped in waters of the United States or wetlands is subject to U.S. Corps of Engineers permitting regulations. Any material buried or stockpiled beyond approved construction limits would require additional archeological investigations unless buried in a previously approved borrow location.

All trees to be removed are marked with an 'X'. Costs shall be paid as site clearing and restoration.

All trees, hedge rows, shelter belts, and woody shrubs not shown to be removed and located between the right-of-way line or easement line shall be spared unless directed by the engineer to be removed. All trees within the appropriate clear zone shall be removed.

Traffic signs for this contract shall be new. Existing signs shall be stockpiled on site to be picked up by C.O.W. crews. Work associated with the removal and stockpile of signs shall be subsidiary to the bid item "Street Signage". Call traffic eng. @ 268-4029 to coordinate.

Contractor shall provide temporary sediment control at all inlets. Such control shall be maintained until and upon germination of seeding. Acceptable means of control shall be approved by engineer. Cost shall be bid as "Inlet Sediment Barriers".

Elevations are in City of Wichita Datum. (Meters)

Horizontal control for sidewalk layout is provided on Roadside Improvement sheets (37-43).

WSU Campus Improvements Include Relocating Exsist. Perimeter Rd. to the Intersection of 21st & Belmont. The Construction for Relocation of Perimeter Rd. Will be in the same time frame as the Construction of the 21st Improvements. 21st Street Contractor Shall be required to Maintain Access at either Exist. Perimeter Rd., Exist. Golf Course Entrance, or Proposed Intersection of 21st & Belmont.

Sta. 0+754.38 21st, Replace Existing Advance Vehicle Detector Loop 4 Turns @ 1.8mx6m, See Sht. No. 50 (Cost Subsidiary to Traffic Signalization.)

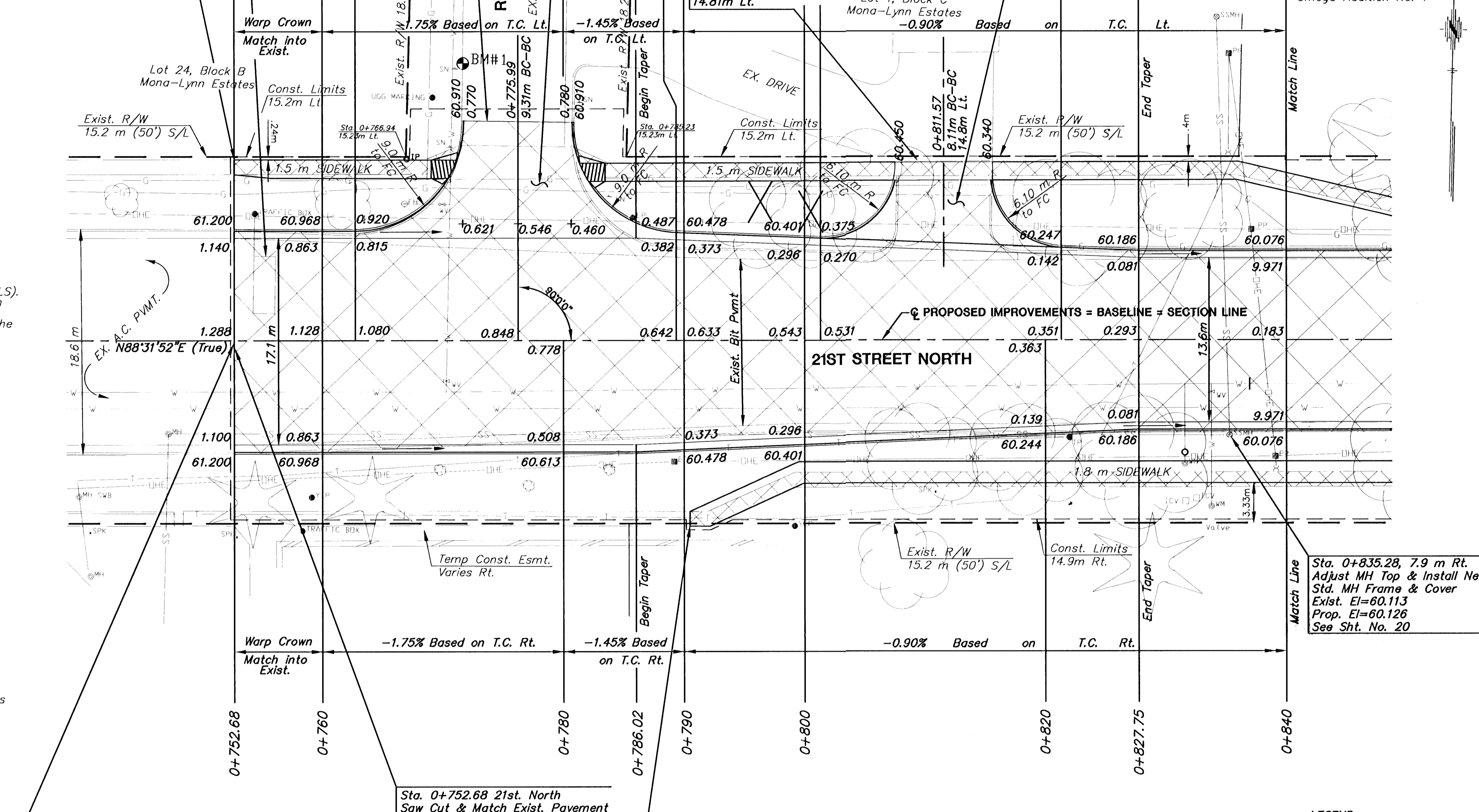
Sta. 0+775.99, Const. Reinf. Conc. Valley Gutter 200 mm

NW Cor. Sec. 11, T27S, R1E
Sta. 0+190.92, 0.00 m Rt.
Iron Pipe
1. USGS Azimuth Marker 18.20 m SE
2. "+ " Cut on Conc. Sign Base 18.02 m SW
3. Westerly Cor. 600 mm Conc. Signal Base 13.10 m NE
N=517954.961, E=505930.385

FHWA REG. NO.	STATE	PROJECT NO.	YEAR	SHEET NO.	TOTAL SHEETS
7	KANSAS	87-N-0200-01	2001	3	78

Sta. 0+752.68 21st North Begin Const. 1.5m Sidewalk Lt. Saw Cut to Nearest Joint & Match Exist

Sta. 0+811.57, Const. Reinf. Conc. Drive 200 mm

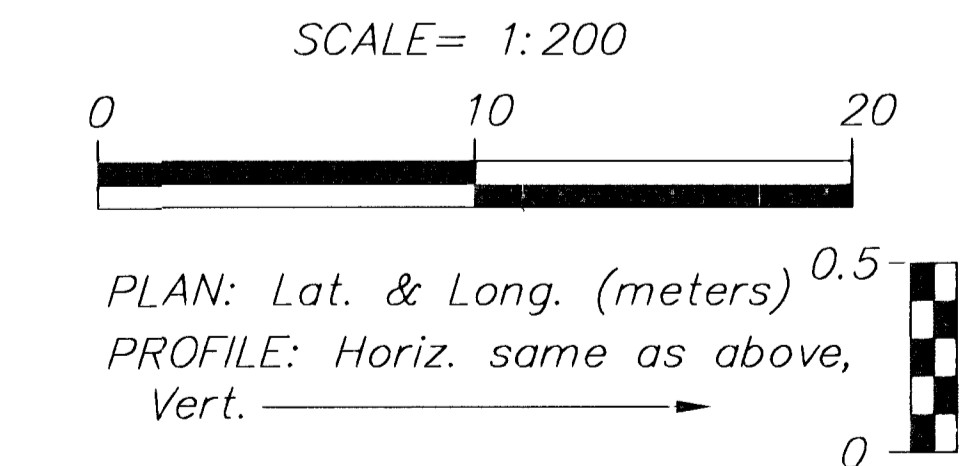


Sta. 0+752.68, Begin Proj. 87-N-0200-01

Sta. 0+752.68 21st North Saw Cut & Match Exist. Pavement

Begin Const. 1.8m Sidewalk Rt. Saw Cut to Nearest Joint & Match Exist.

Sta. 0+835.28, 7.9 m Rt. Adjust MH Top & Install New Std. MH Frame & Cover Exist. El=60.113 Prop. El=60.126 See Sht. No. 20



LEGEND

	Tree Removal
	Pavement, Median, Driveway and/or Sidewalk Removal

ADJUST VALVE BOX, FIRE HYDRANT & WTR. METER					
STATION	OFFSET BL (m)	DESCRIPTION	EXIST. ELEV.	PROP. ELEV.	REMARKS
0+769.9	11.3 LT.	WV	60.77	-	Adj. in Field
0+769.9	3.3 RT.	WV	60.87	60.844	
0+831.6	10.2 RT.	WM	60.10	60.194	Relocate
0+833.8	4.3 RT.	WV	60.06	60.104	

BM #1 Square Cut on TC on W. Side Roosevelt. N. of 21st Sta. 0+771.67 22.96 m Lt. Elev.=60.847

- Utility Owners**
- T - Southwestern Bell Telephone Co. 1-800-734-7590
 - G - Kansas Gas Service (316)-383-8600
 - SS & W - City of Wichita Water & Sewer Dept. (316)-268-4940
 - OHE - KG&E (316)-383-8600
 - SWS - City of Wichita Stormwater Utility (316)-268-4071
 - TV - Cox Communications (316)-263-2061

KANSAS DEPARTMENT OF TRANSPORTATION					
21ST STREET NORTH					
STA. 0+740 TO STA. 0+840					
PROJ. NO. 87-N-0200-01					
MKEC ENGINEERING CONSULTANTS, INC.					
WICHITA, KANSAS					
DESIGNED BY:	DFL	CHECKED BY:	GJA		
DRAWN BY:	GJR	DATE:	JUNE 2001	SHEET	3 OF 78

DATE	
BY	
REFERENCES NOTED	
REFERENCES CHECKED	