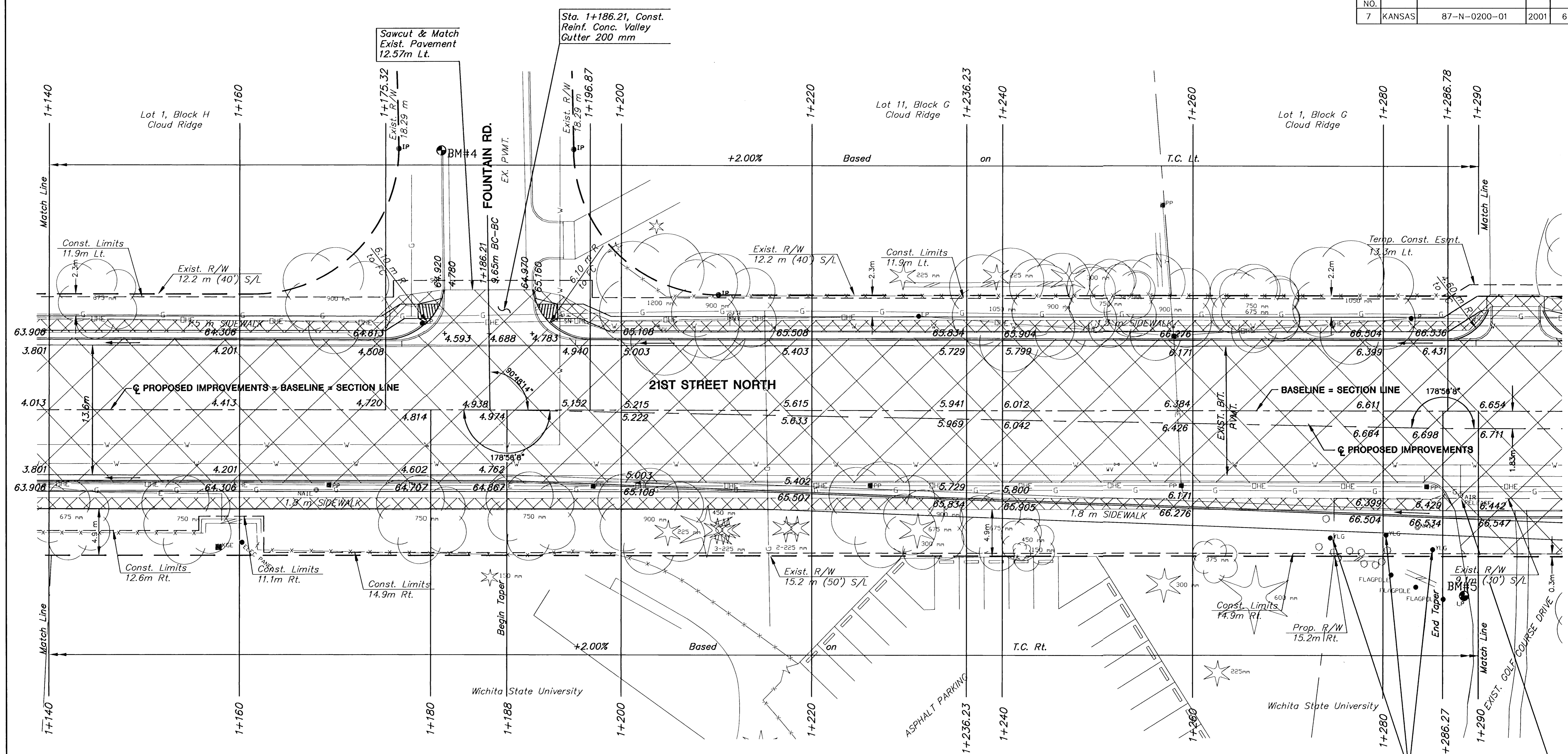


DATE	
BY	
REFERENCES NOTED	
REFERENCES CHECKED	



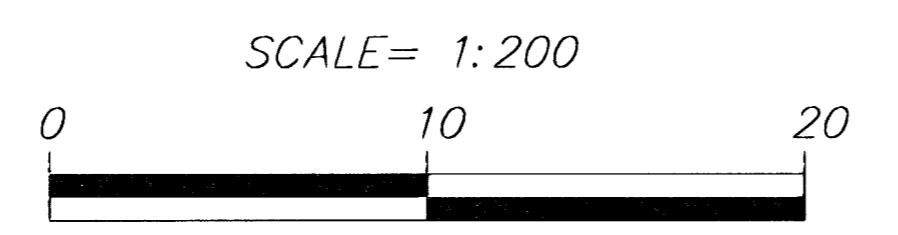
Remove Yard lights and Stppckpile on WSU Property for Pick Up by WSU (Cost shall be subsidiary to Site Clearing & Restoration)

Air Release Valve to be relocated by Wichita Water Dept.

STATION	OFFSET BL (m)	DESCRIPTION	EXIST. ELEV.	PROP. ELEV.	REMARKS
1+193.6	9.8 Lt.	WV	65.21	65.025	
1+203.7	8.8 Lt.	WV	65.35	65.207	
1+211.4	9.6 Lt.	WV	65.45	65.377	
1+252.0	5.6 Rt.	WV	66.08	66.010	

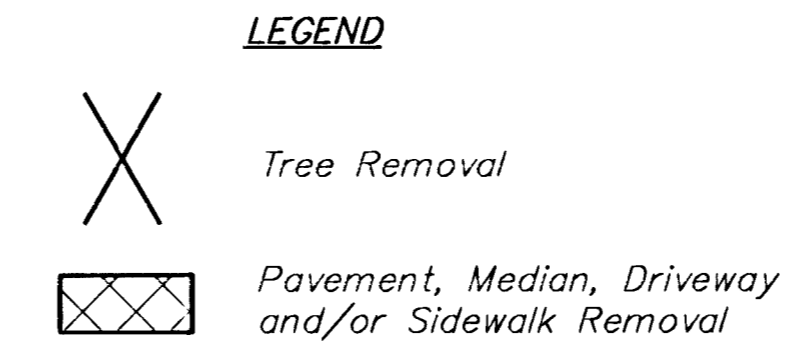
BM #4 Square Cut Top Curb, West Side Fountain. Sta. 1+181.08 Elev=64.737

BM #5 Square Cut Top of Light Pole Base, W. Side Entrance WSU Golf Course. Sta. 1+288.49, 19.37 m Lt. Elev=68.027



PLAN: Lat. & Long. (meters) 0.5

PROFILE: Horiz. same as above, Vert. →



- Utility Owners**
- T - Southwestern Bell Telephone Co. 1-800-734-7590
 - G - Kansas Gas Service (316)-383-8600
 - SS & W - City of Wichita Water & Sewer Dept. (316)-268-4940
 - OHE - KG&E (316)-383-8600
 - SWS - City of Wichita Stormwater Utility (316)-268-4071
 - TV - Cox Communications (316)-263-2061

KANSAS DEPARTMENT OF TRANSPORTATION				
21ST STREET NORTH				
STA. 1+140 TO STA. 1+290				
PROJ. NO. 87-N-0200-01				
MKEC ENGINEERING CONSULTANTS, INC.				
WICHITA, KANSAS				
DESIGNED BY: DFL	CHECKED BY: GJA			
DRAWN BY: GJR	DATE: JUNE 2001		SHEET 6 OF 78	