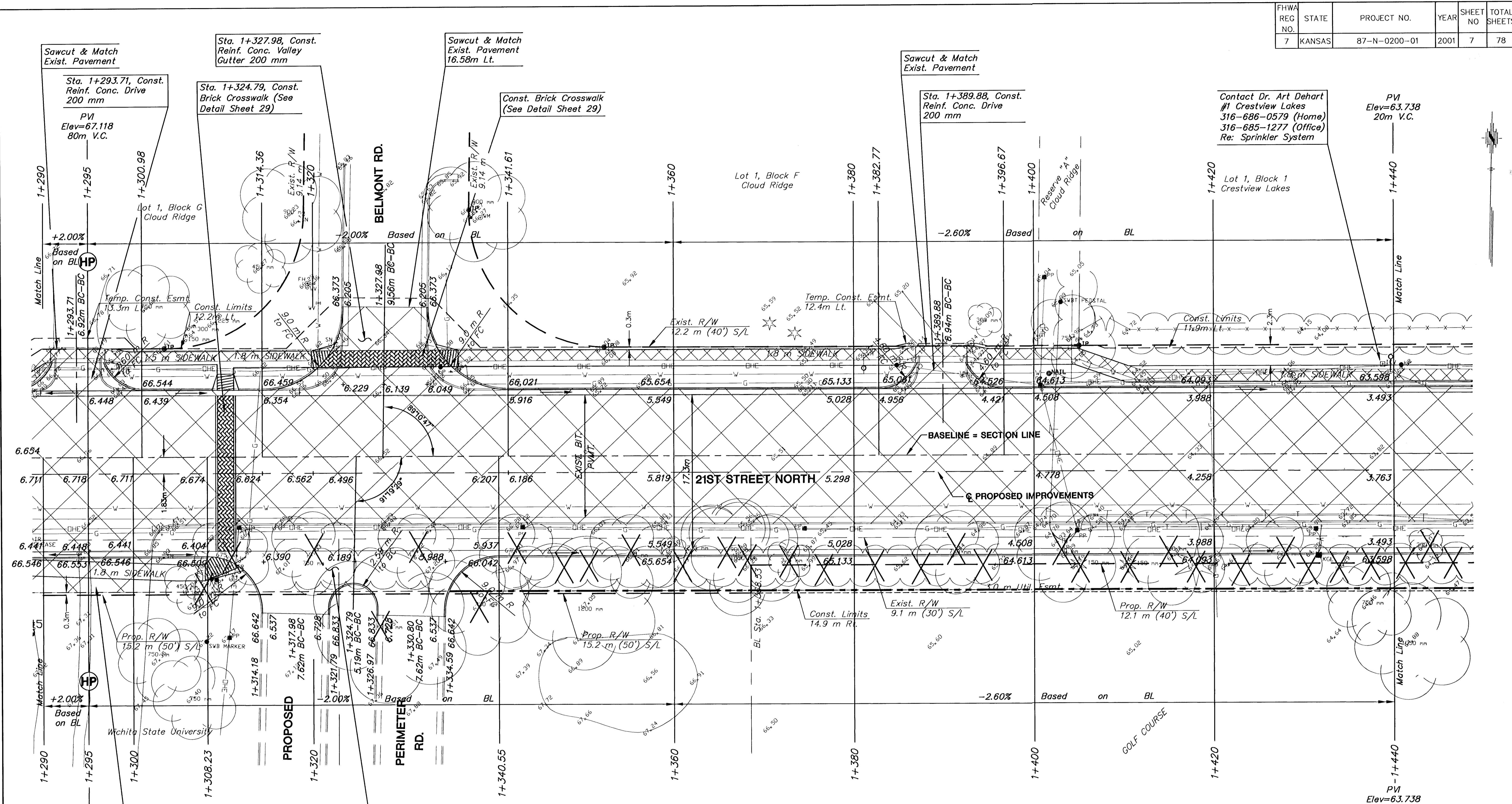


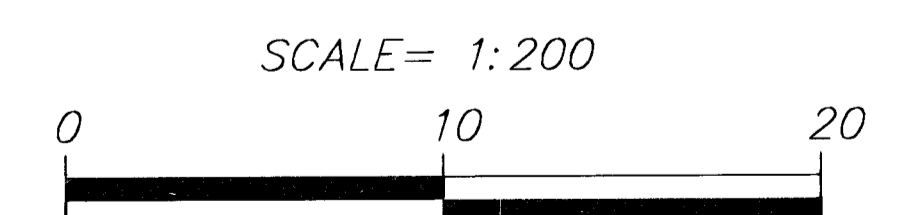
FHWA REG. NO.	STATE	PROJECT NO.	YEAR	SHEET NO.	TOTAL SHEETS
7	KANSAS	87-N-0200-01	2001	7	78

DATE	BY

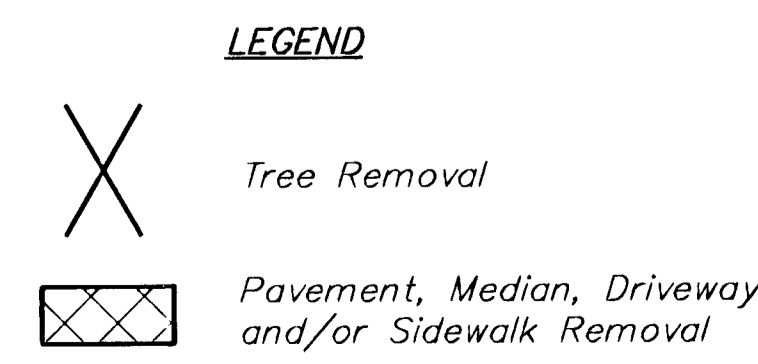


ADJUST VALVE BOX, FIRE HYDRANT & WTR. METER

STATION	OFFSET BL (m)	DESCRIPTION	EXIST. ELEV.	PROP. ELEV.	REMARKS
1+381.2	11.1 Lt.	WM	65.32	65.142	Relocate
1+439.6	9.1 Lt.	WM	63.76	63.658	Relocate



PLAN: Lat. & Long. (meters)
 PROFILE: Horiz. same as above,
 Vert. —————



Note: Contractor to use caution when removing trees on the south side of 21st. SWB has placed a new line in the 3.0m util esmnt.

- Utility Owners
- T - Southwestern Bell Telephone Co. 1-800-734-7590
 - G - Kansas Gas Service (316)-383-8600
 - SS & W - City of Wichita Water & Sewer Dept. (316)-268-4940
 - OHE - KG&E (316)-383-8600
 - SWS - City of Wichita Stormwater Utility (316)-268-4071
 - TV - Cox Communications (316)-263-2061

2					
1					
NO.	DATE	REVISIONS	BY	APP'D	
KANSAS DEPARTMENT OF TRANSPORTATION					
21ST STREET NORTH					
STA. 1+290 TO STA. 1+440					
PROJ. NO. 87-N-0200-01					
MKEC ENGINEERING CONSULTANTS, INC.					
WICHITA, KANSAS					
DESIGNED BY:	DFL	CHECKED BY:	GJA	DATE:	JUNE 2001
DRAWN BY:	GJR	DATE:	JUNE 2001	SHEET	7 OF 78

6:\CIVIL\99257\DWG\PAVE\99257ES.DWG Thu Oct 16 13:55:23 2001