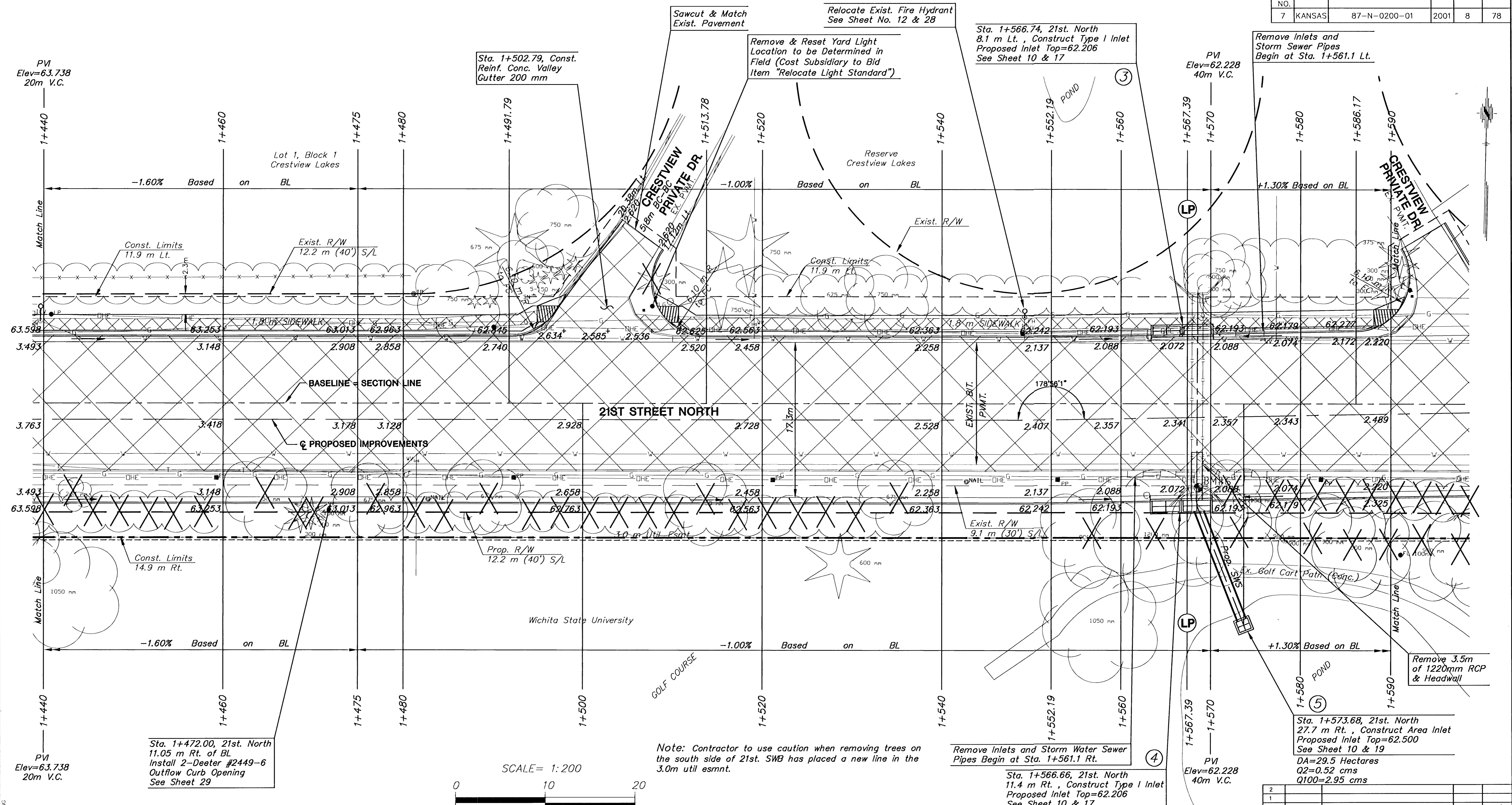
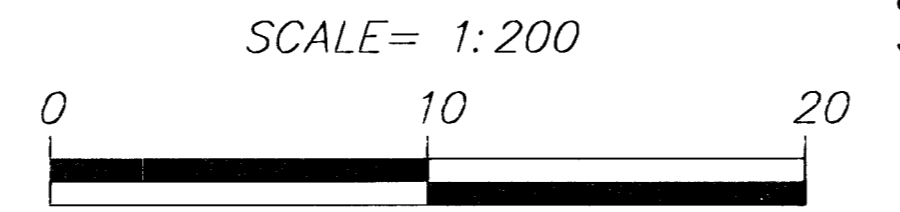


FHWA REG. NO.	STATE	PROJECT NO.	YEAR	SHEET NO.	TOTAL SHEETS
7	KANSAS	87-N-0200-01	2001	8	78

BY	DATE
REFERENCES NOTED	
REFERENCES CHECKED	



STATION	OFFSET BL (m)	DESCRIPTION	EXIST. ELEV.	PROP. ELEV.	REMARKS
1+481.5	6.5 Rt.	WV	62.91	62.910	
1+519.1	8.8 Lt.	WV	62.68	62.598	
1+549.2	8.7 Lt.	WV	62.39	62.294	
1+575.8	7.1 Lt.	WV	62.02	62.139	
1+577.3	8.8 Lt.	WV	62.32	62.227	
1+578.5	7.1 Lt.	WV	62.04	62.154	



PLAN: Lat. & Long. (meters) 0.5  
 PROFILE: Horiz. same as above, Vert. ———— 0

- LEGEND**
- X Tree Removal
  - ▨ Pavement, Median, Driveway and/or Sidewalk Removal

- Utility Owners**
- T - Southwestern Bell Telephone Co. 1-800-734-7590
  - G - Kansas Gas Service (316)-383-8600
  - SS & W - City of Wichita Water & Sewer Dept. (316)-268-4940
  - OHE - KG&E (316)-383-8600
  - SWS - City of Wichita Stormwater Utility (316)-268-4071
  - TV - Cox Communications (316)-263-2061

BM #6 Square Cut on Headwall S. Side of 21st. Sta. 1+568.63 9.34 m Lt. Elev=62.299

KANSAS DEPARTMENT OF TRANSPORTATION				
21ST STREET NORTH STA. 1+440 TO STA. 1+590				
PROJ. NO. 87-N-0200-01				
MKEC ENGINEERING CONSULTANTS, INC. WICHITA, KANSAS				
DESIGNED BY: DFL	CHECKED BY: GJA			
DRAWN BY: GJR	DATE: JUNE 2001	SHEET 8 OF 78		